



Preston Report

Edmond Real Estate Market September 2019

Prepared by

Brian Preston

RE/MAX at Home

Mobile: 405-826-5725

bpreston88@sbcglobal.net

www.Edmond4Sale.com



Realtor of the Year 1995 & 2002
Lifetime Achievement 2009
Most Cooperative Realtor 1992
RE/MAX Hall of Fame
Oklahoma Association of Realtors Life Member 2018

Edmond Real Estate

2019 Residential Homes

	Active	Pending	Sold
January	1293	550	211
February	1287	675	301
March	1279	751	380
April	1262	799	404
May	1289	695	512
June	1308	686	485
July	1282	572	530
August	1300	549	475
September	1268	495	371
October			
November			
December			
		Total	3669

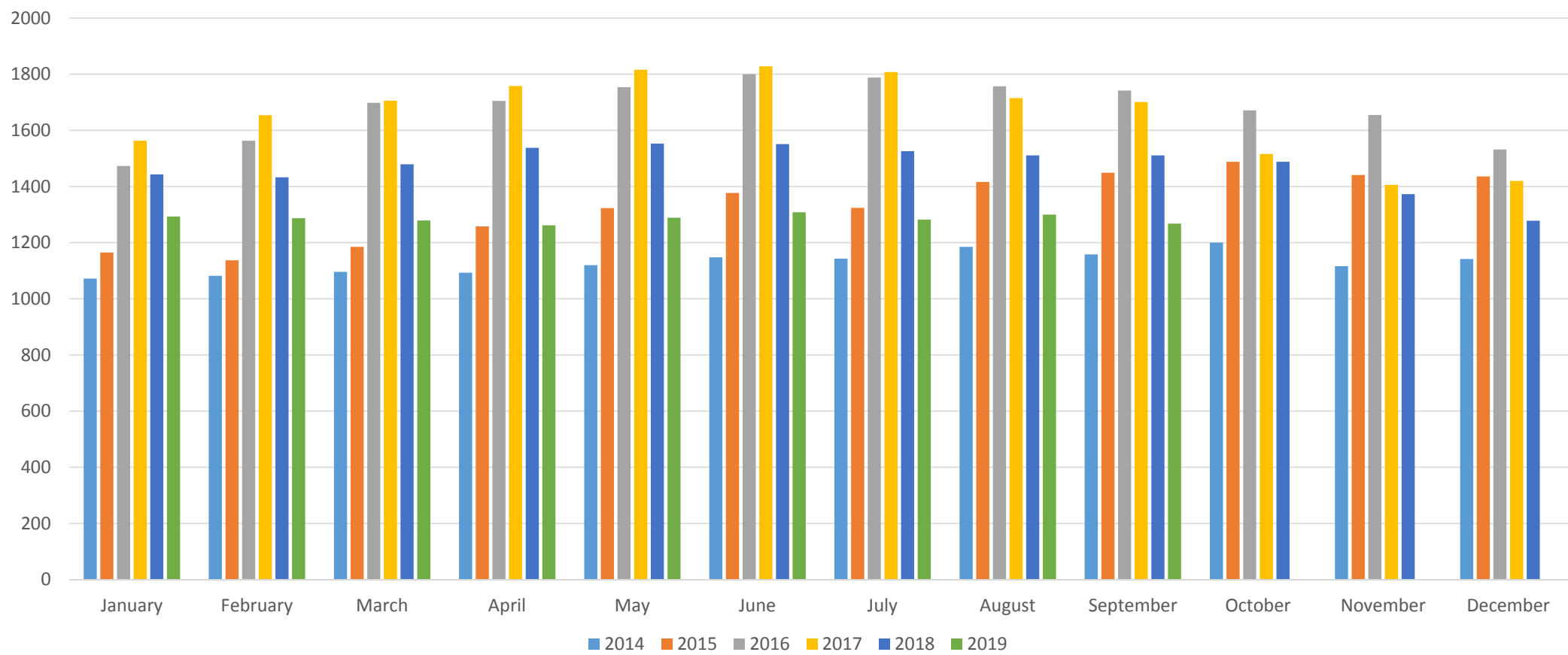
Preston Report

Based on information from MLSOK.com for the period (01/01/19) through (09/30/19) Edmond, Deer Creek and Oakdale School Districts, while information is deemed reliable it is not guaranteed

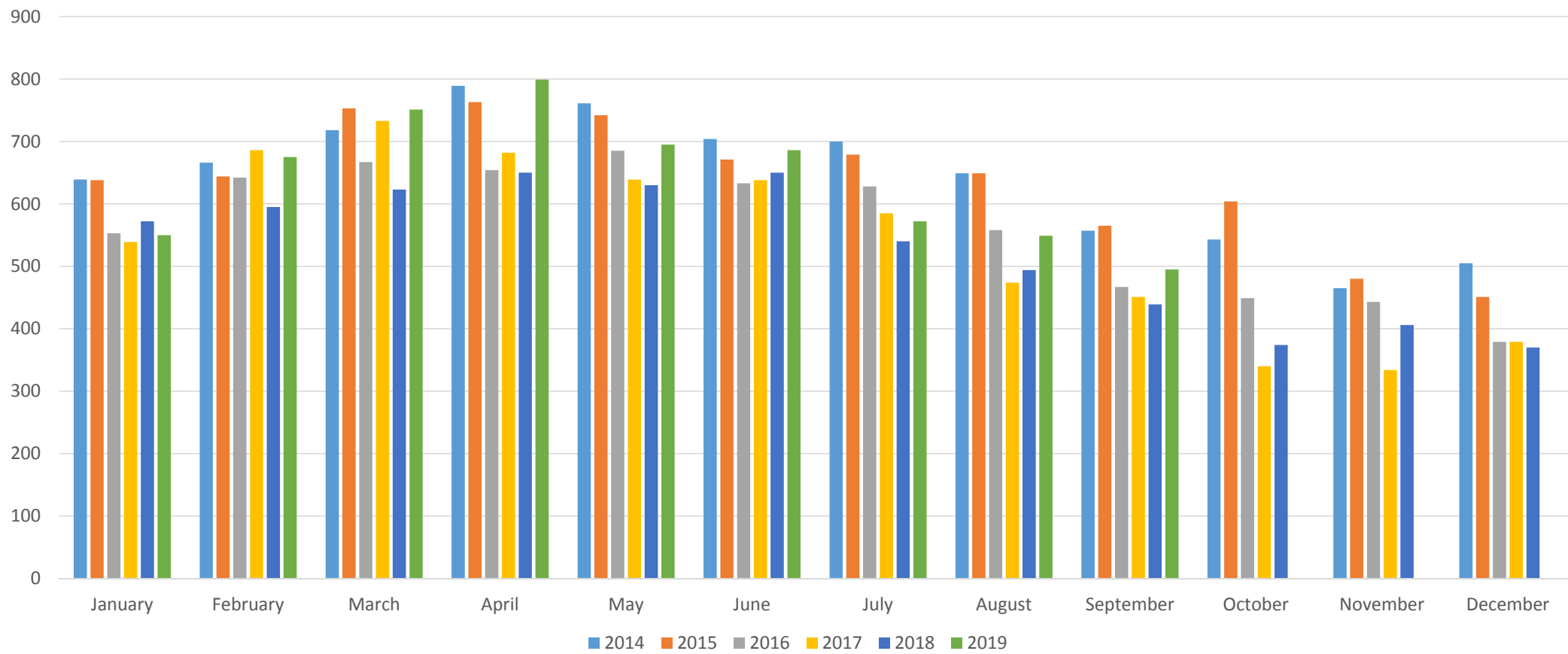
Average Sales Price & Sales Volume

	Average Price	Total Volume	Avg Price New Home	Total Volume New Homes
Jan.	\$326,736	\$68,941,296	\$333,272	\$14,663,968
Feb.	\$307,951	\$92,693,251	\$360,347	\$32,431,230
March	\$304,250	\$115,615,000	\$340,606	\$29,632,722
April	\$294,216	\$118,863,264	\$323,337	\$29,100,330
May	\$309,261	\$158,341,632	\$329,818	\$33,971,254
June	\$322,102	\$156,219,470	\$383,588	\$40,276,740
July	\$296,479	\$157,133,870	\$323,894	\$32,389,400
August	\$303,509	\$144,166,775	\$326,048	\$34,235,040
Sept.	\$295,896	\$109,777,416	\$317,016	\$26,629,344
Oct.				
Nov.				
Dec.				
Total	\$305,738	\$1,121,751,325	\$338,280	\$273,330,028

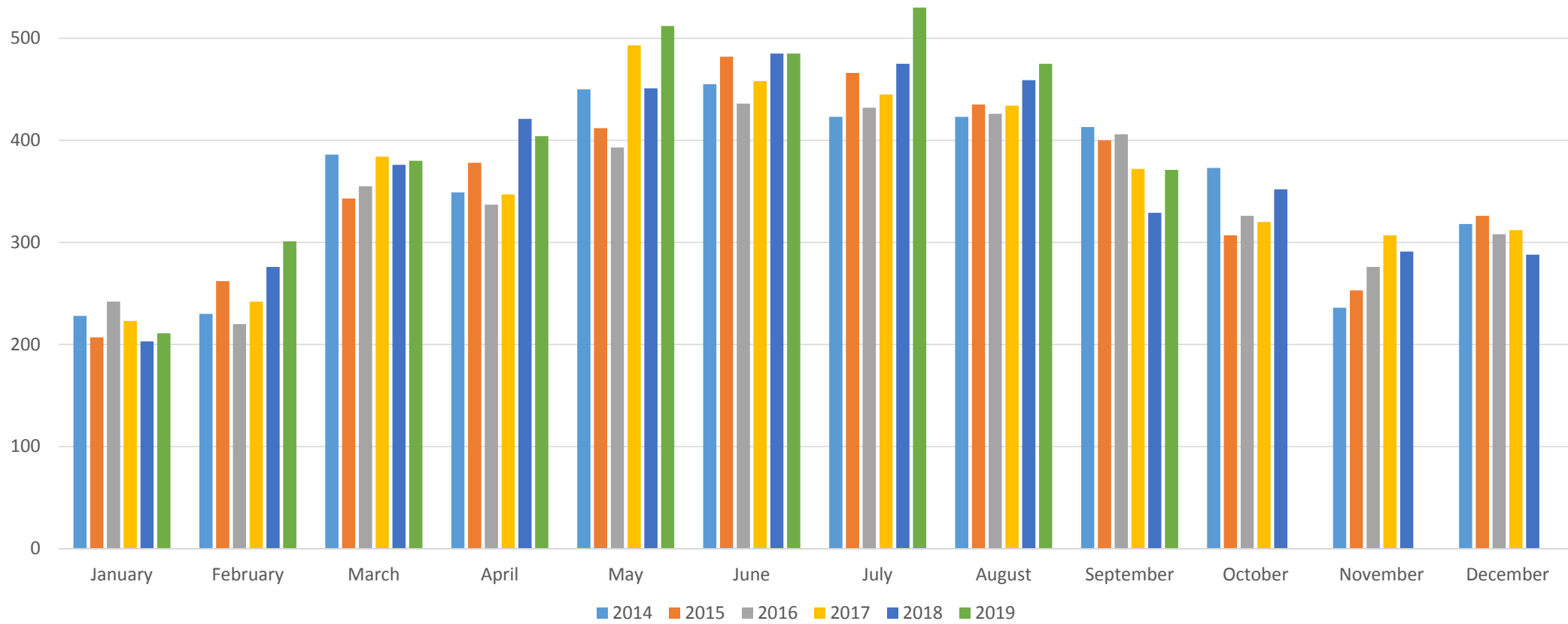
Active Listings



Under Contract



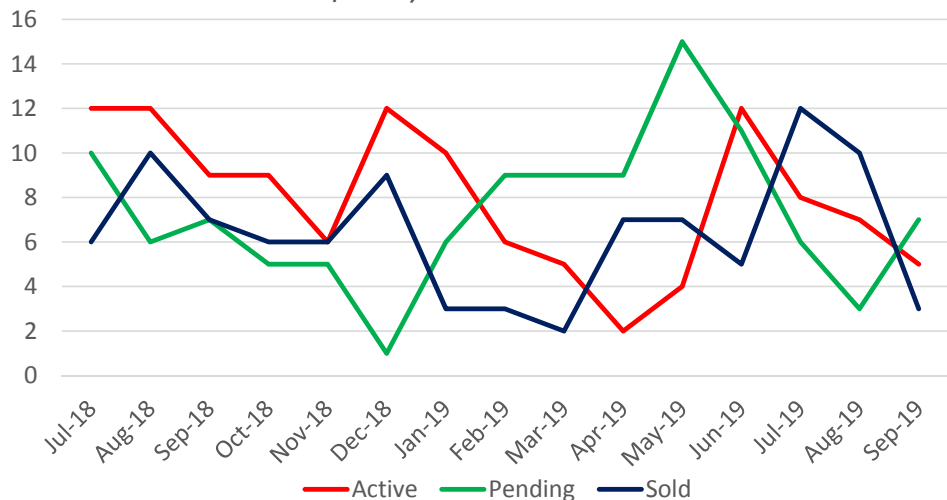
Sold



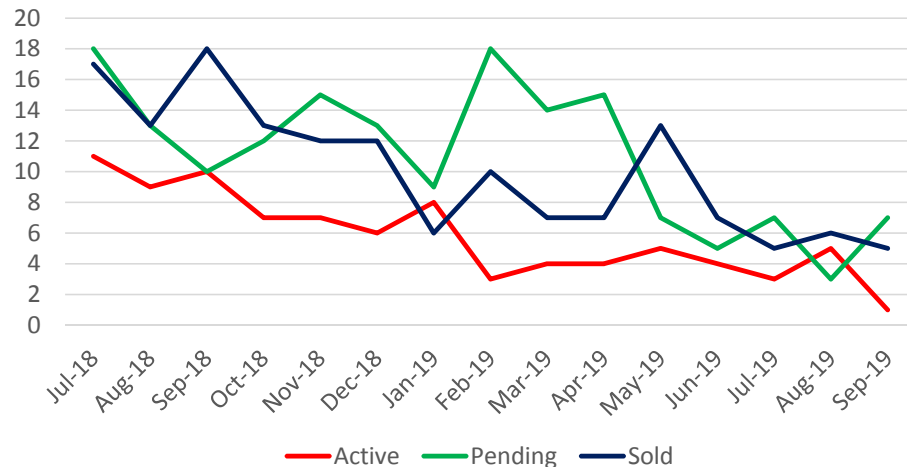
Current Inventory vs. Homes Sold Edmond – September 2019

	Active	Pending	Sold YTD
<\$100,000	5	7	52
\$100-125k	1	7	66
\$125-150k	1	16	184
\$150-175k	28	42	338
\$175-200k	81	72	391
\$200-225k	66	50	390
\$225-250k	89	40	360
\$250-275k	101	25	275
\$275-300k	98	43	263
\$300-350k	178	53	379
\$350-400k	159	51	271
\$400-450K	92	19	195
\$450-500k	83	20	149
\$500-700k	143	29	231
\$700-1 mil	73	13	92
>\$1 million	70	8	33
<hr/> Total	1268	495	3669

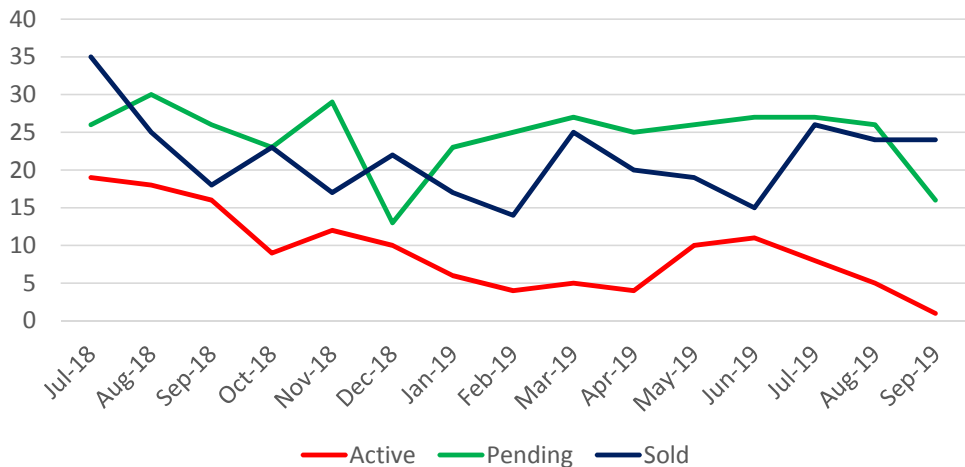
\$100,000 and under



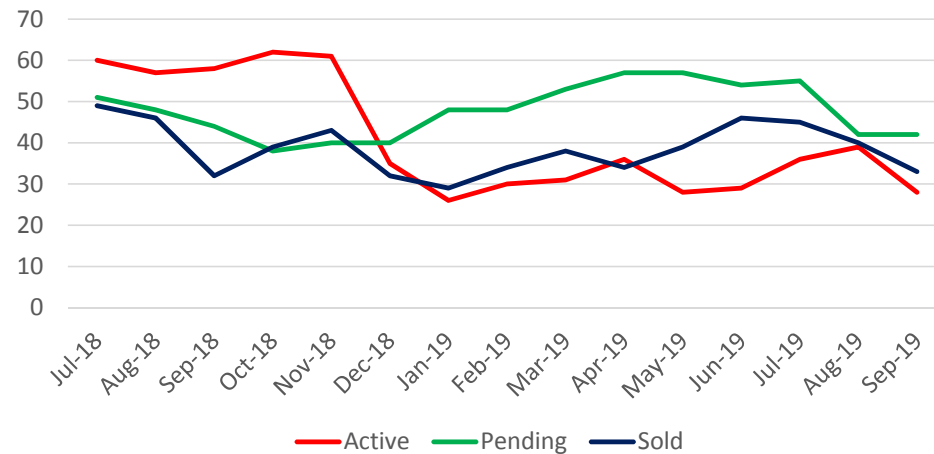
\$100,001-\$125,000



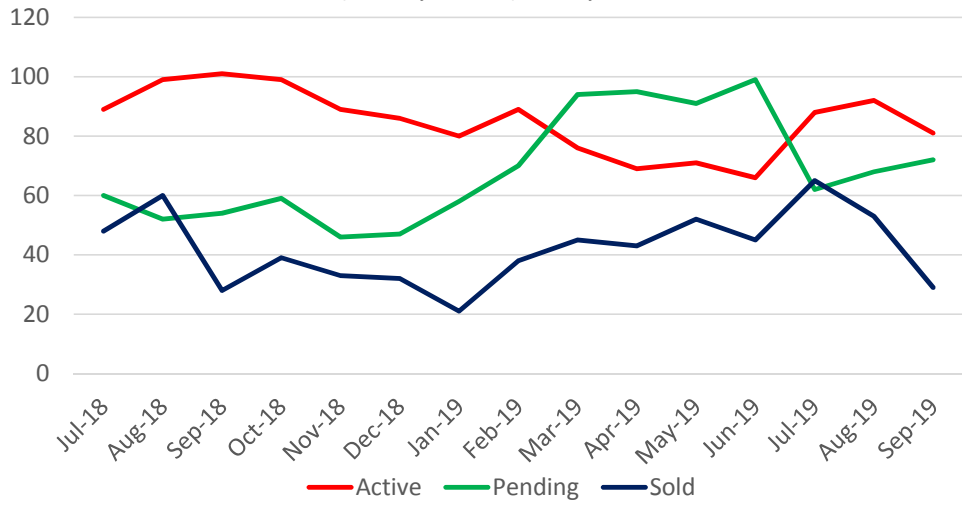
\$125,001-\$150,000



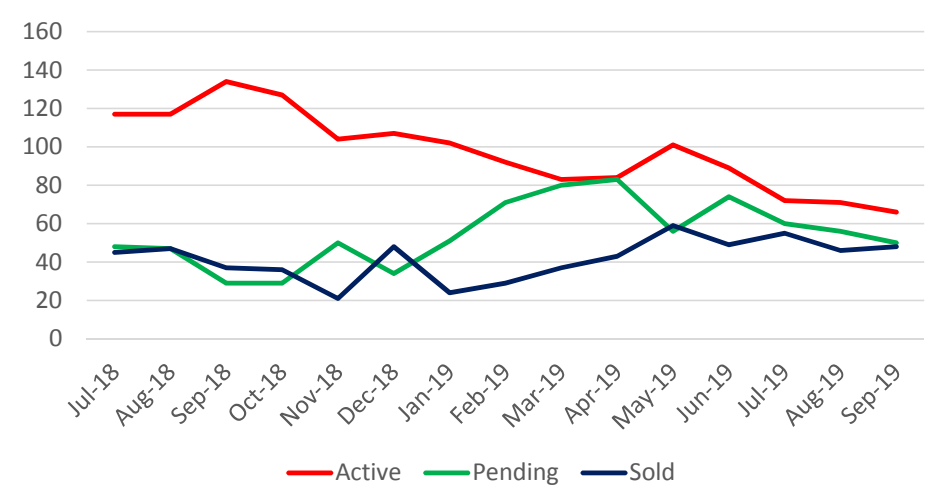
\$150,001-\$175,000



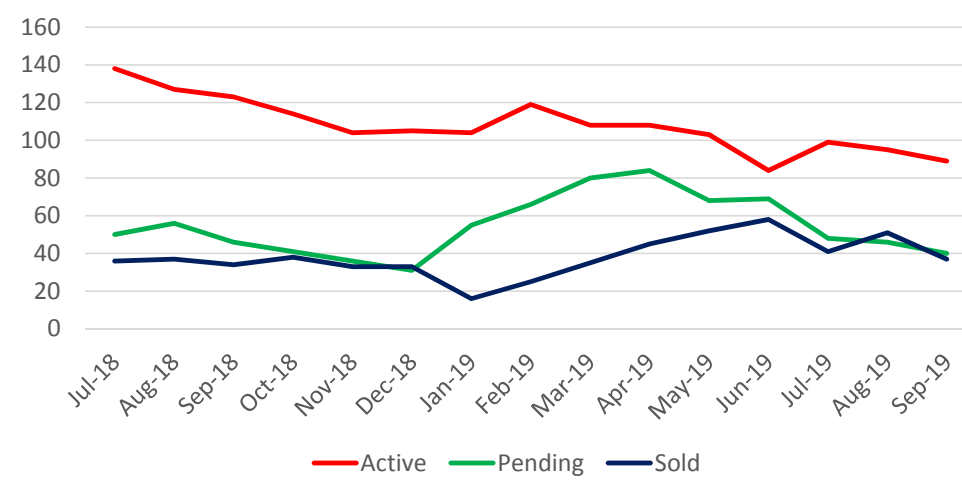
\$175,001-\$200,000



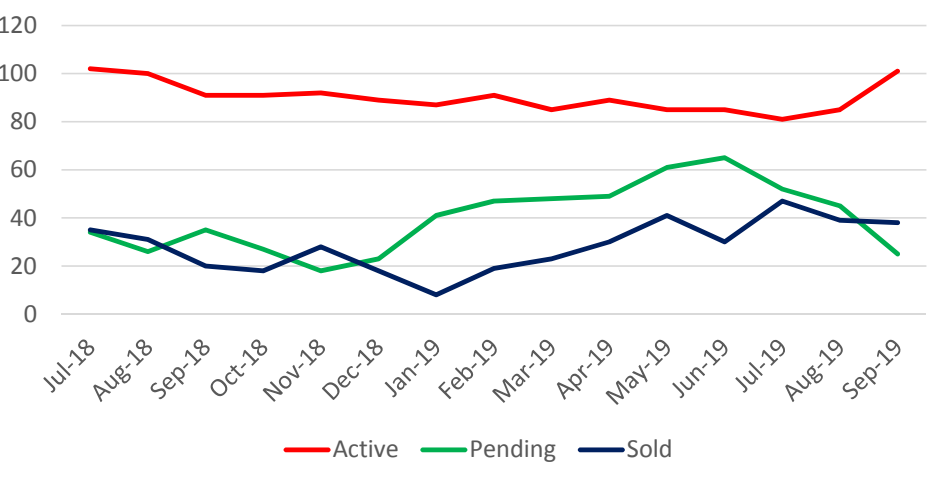
\$200,001-\$225,000



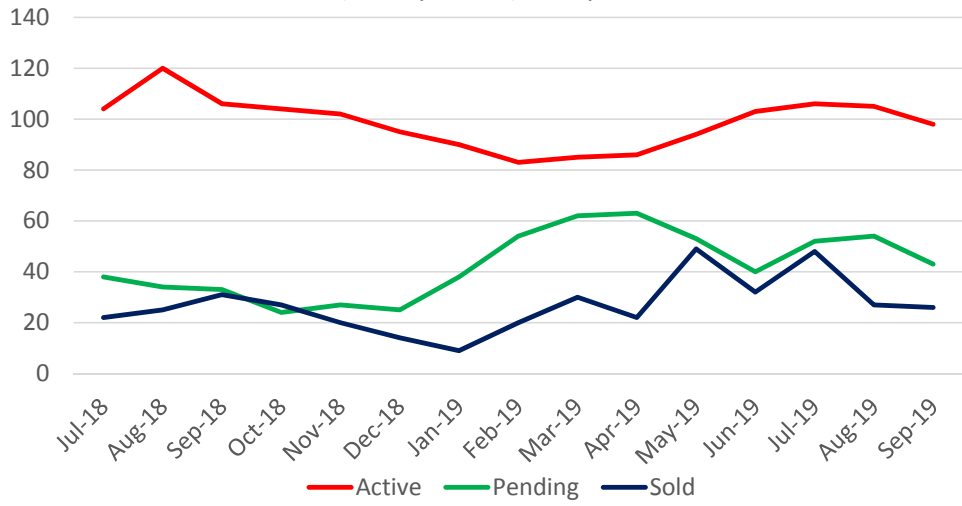
\$225,001-\$250,000



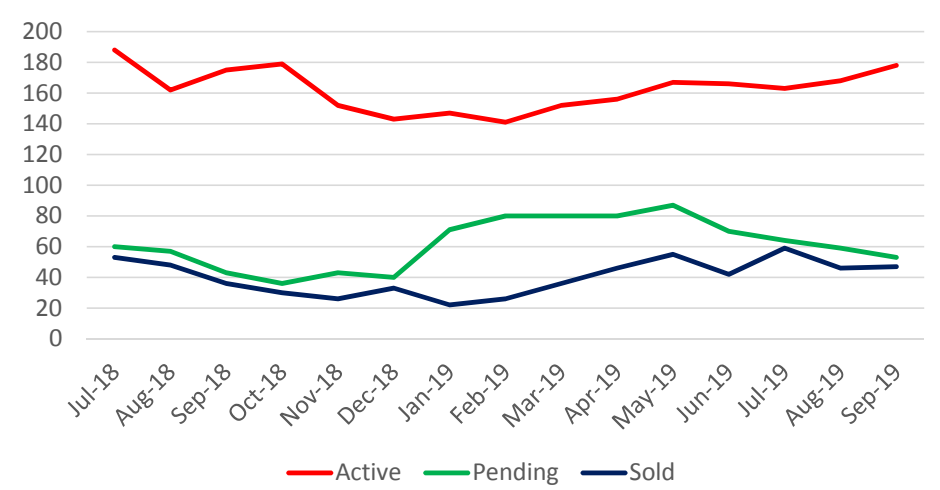
\$250,001-\$275,000



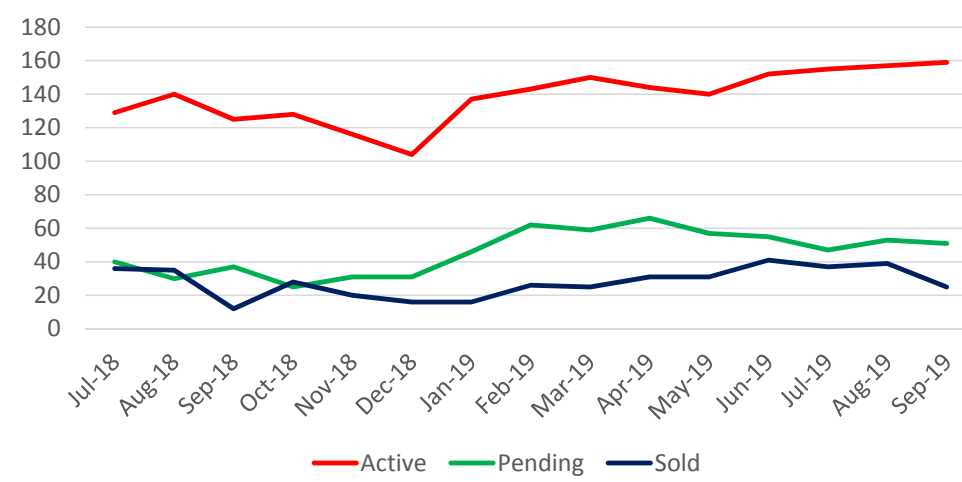
\$275,001-\$300,000



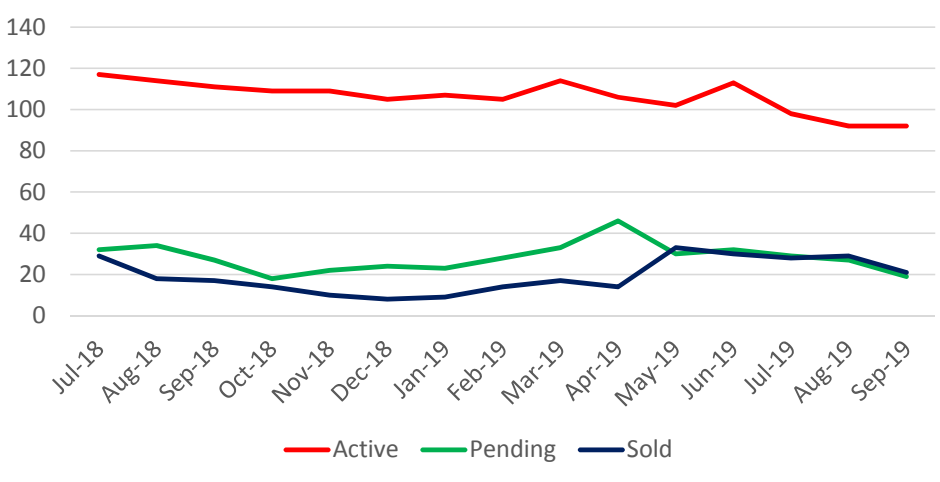
\$300,001-\$350,000



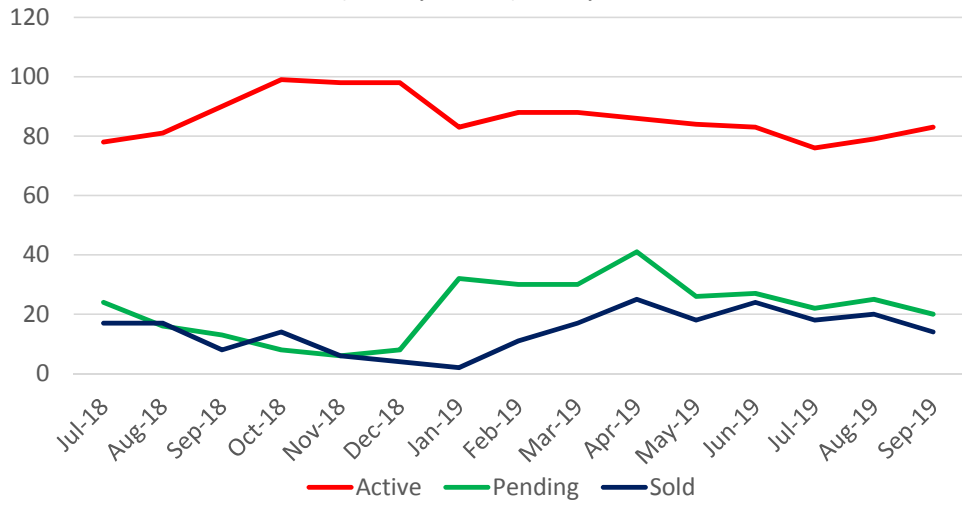
\$350,001-\$400,000



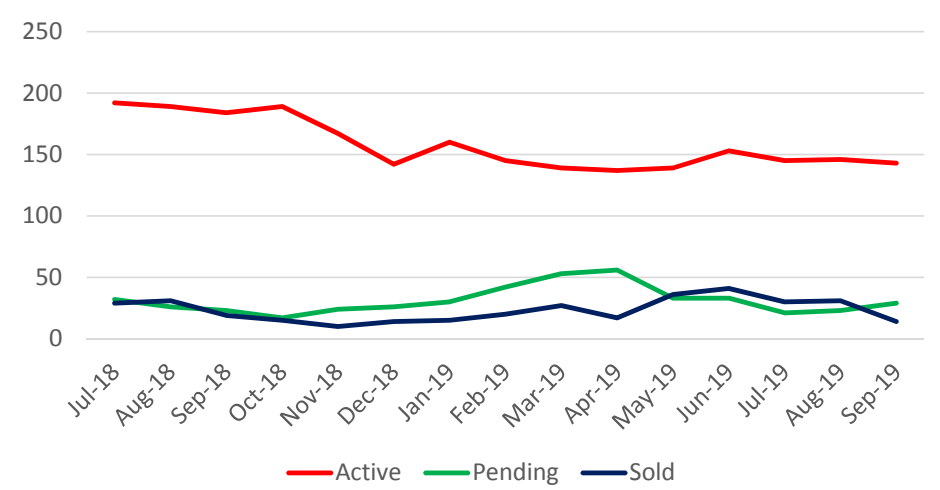
\$400,001-\$450,000



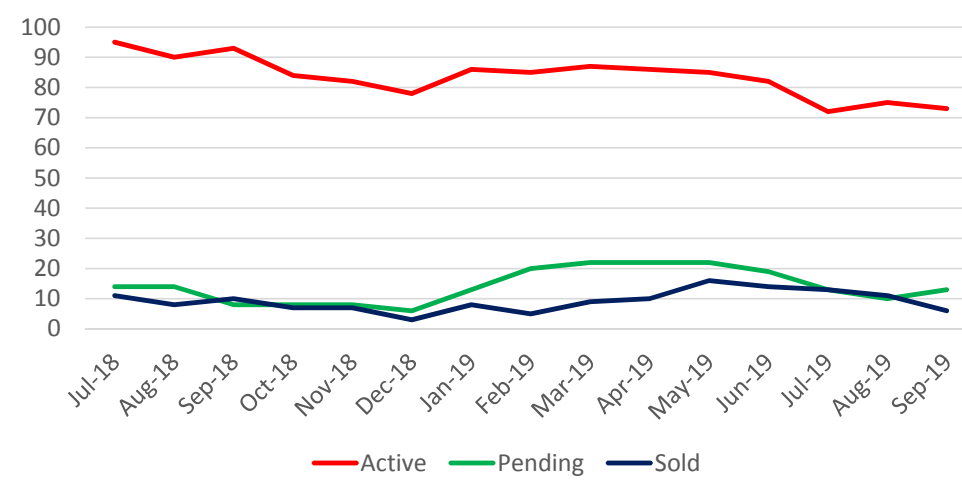
\$450,001-\$500,000



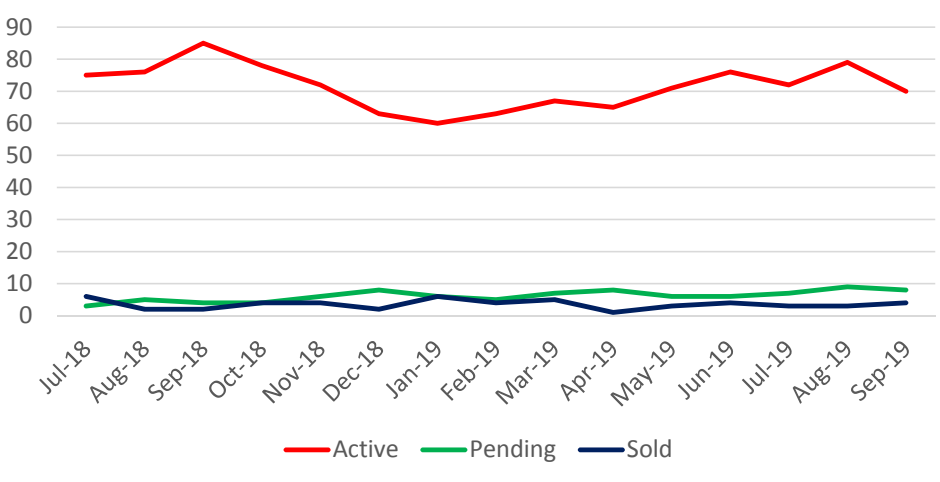
\$500,001-\$700,000



\$700,001-\$999,999

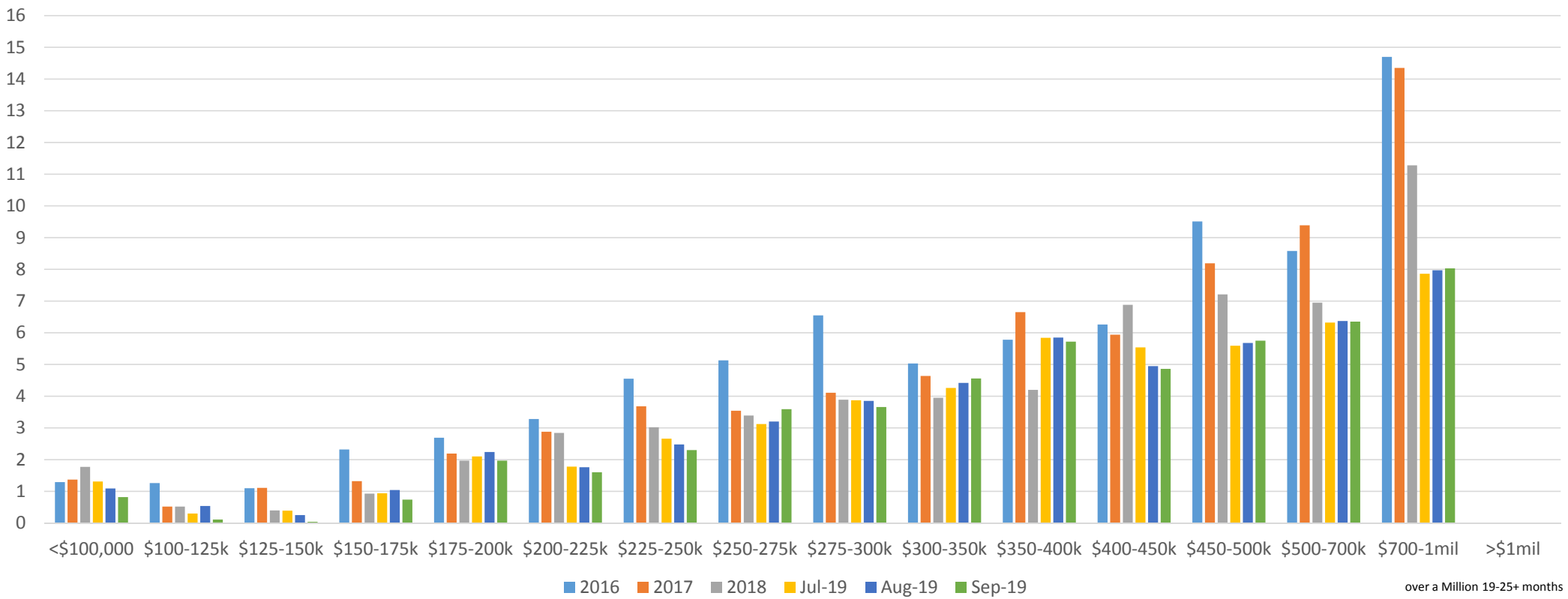


\$1,000,000 and up



Absorption Rates

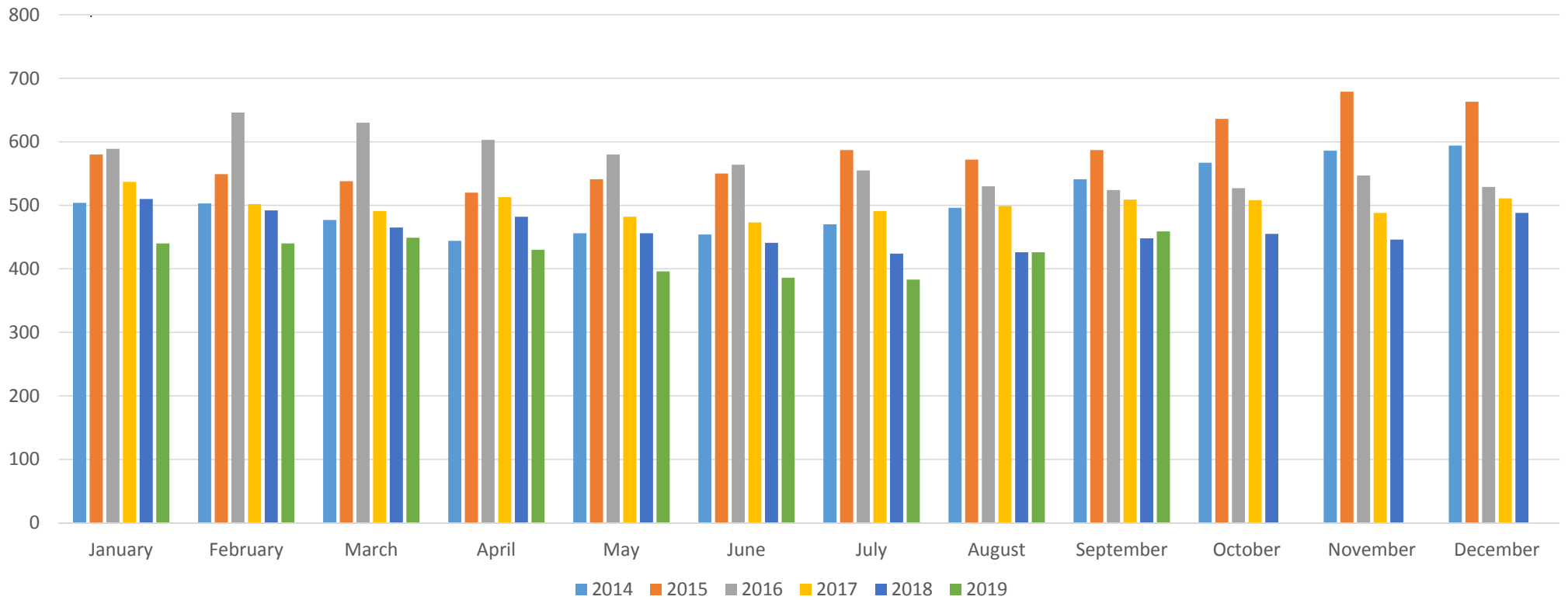
In Months



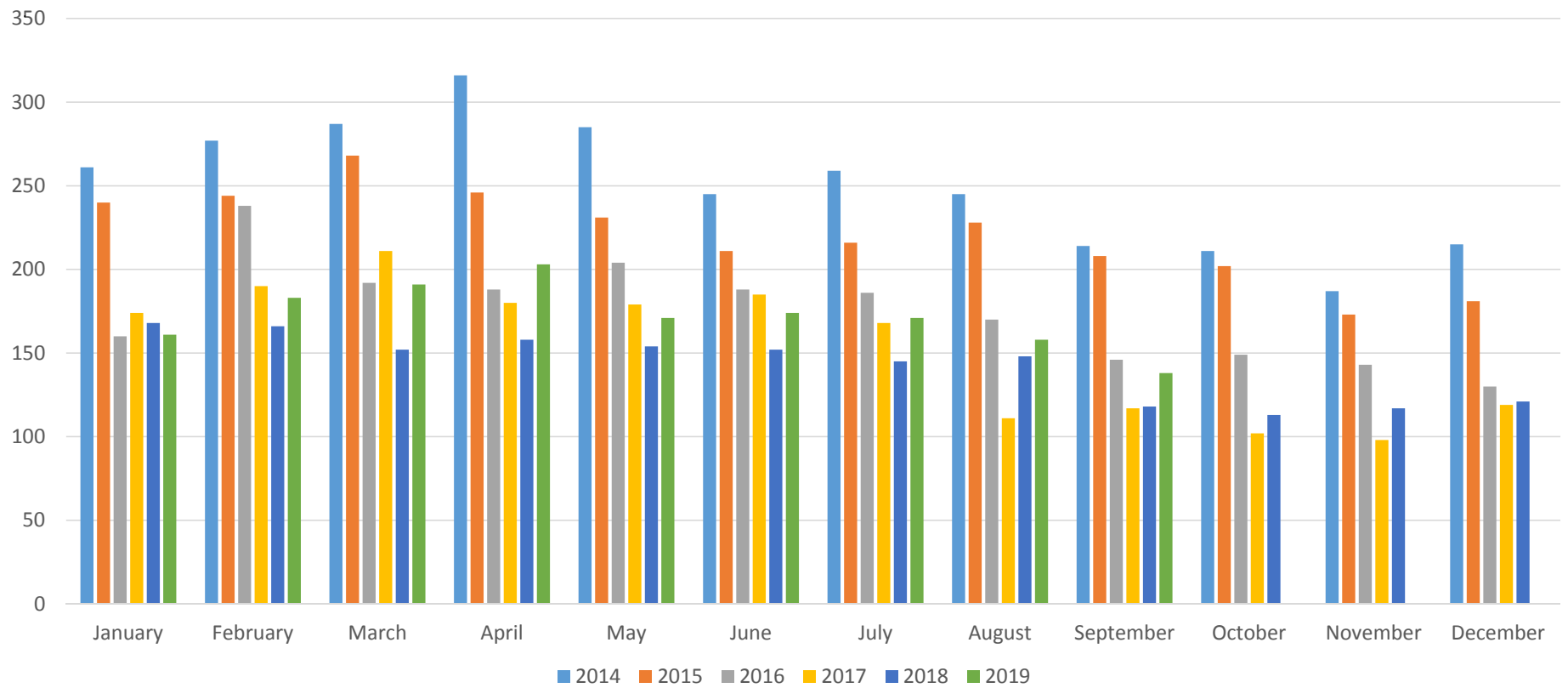
Current New Home Inventory
vs.
New Home Sales
September 2019

	Active Listings	Under Contract	Sold-YTD
<\$200,000	26	30	84
\$200-250	67	24	184
\$250-300	102	28	132
\$300-350	75	16	128
\$350-400	63	18	90
\$400-450	47	8	59
\$450-500	22	6	41
\$500-700	32	5	66
\$700-1 Mil	17	2	21
> 1 Mil	8	1	3
Total	459	138	808

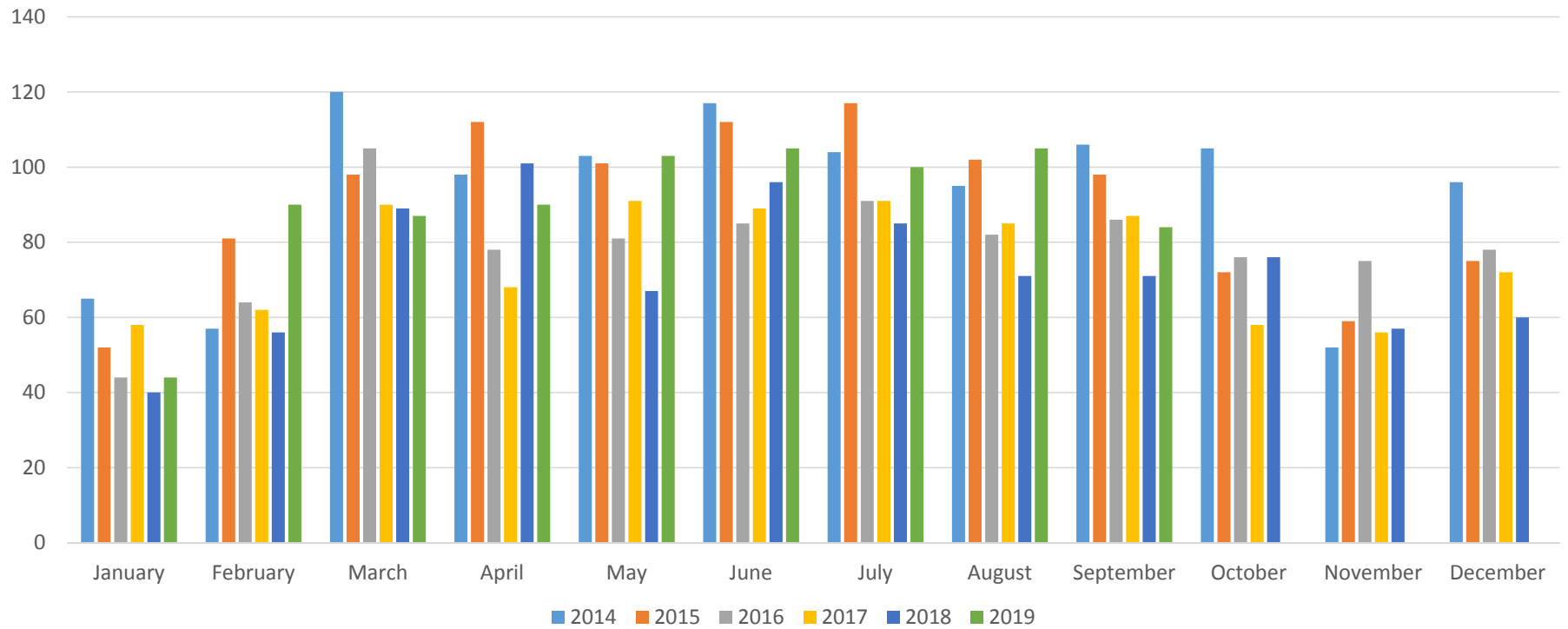
New Homes Active



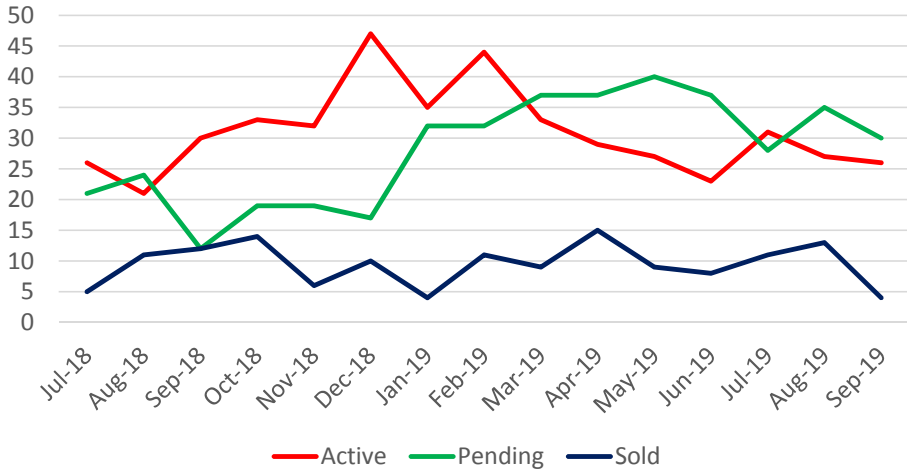
New Homes Under Contract



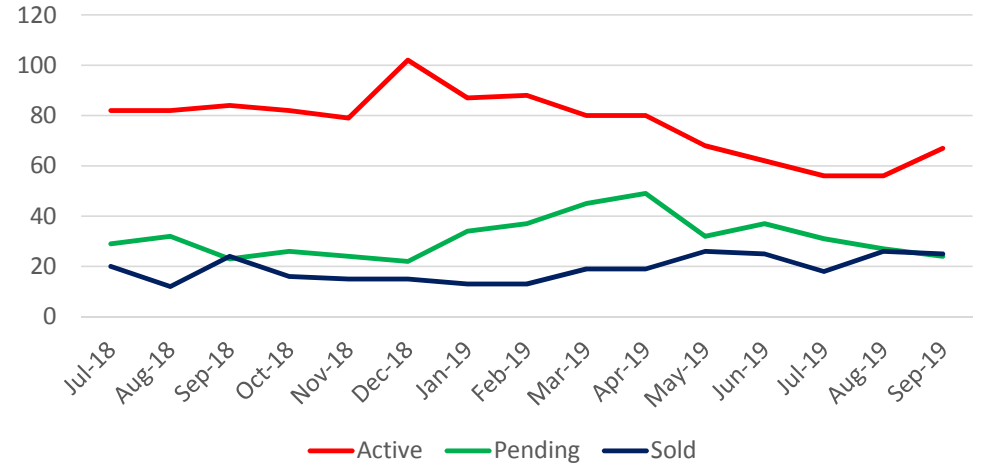
New Homes Sold



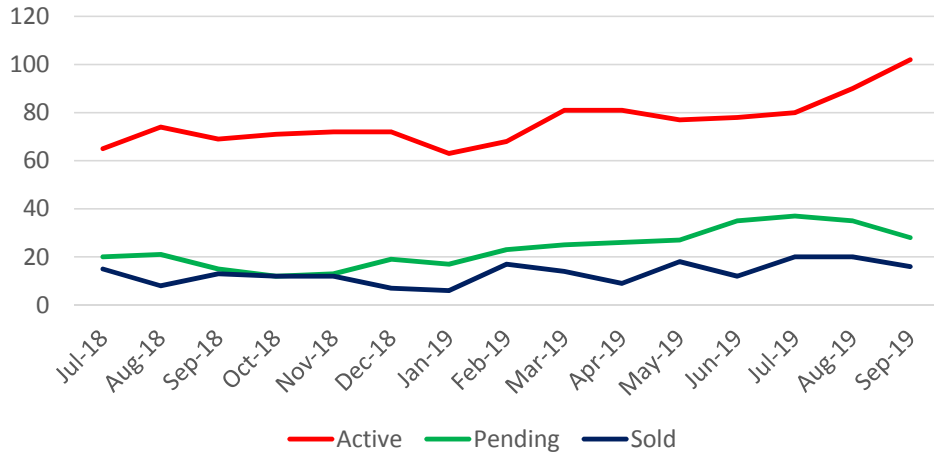
\$200,000 and under



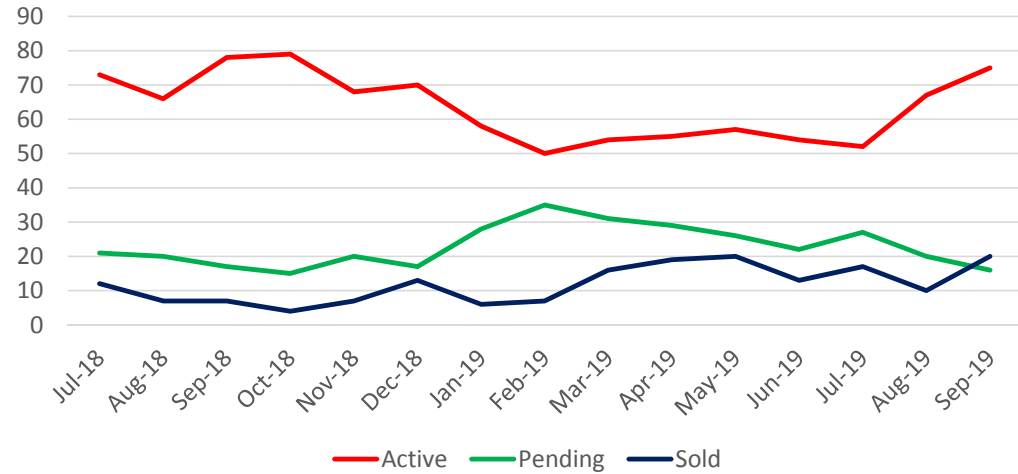
\$200,001-\$250,000



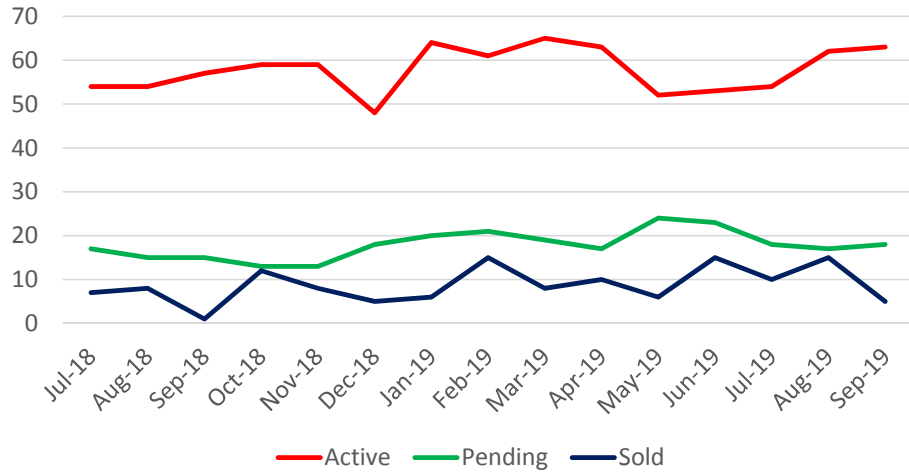
\$250,001-\$300,000



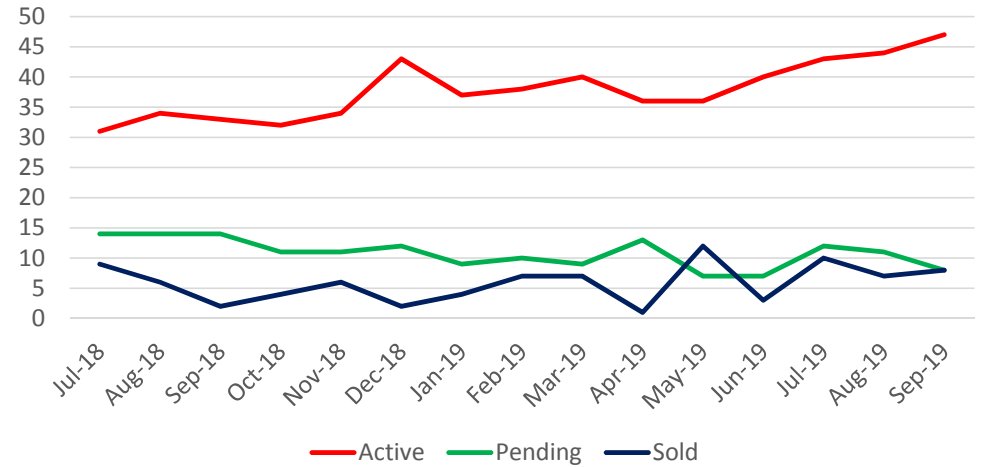
\$300,001-\$350,000



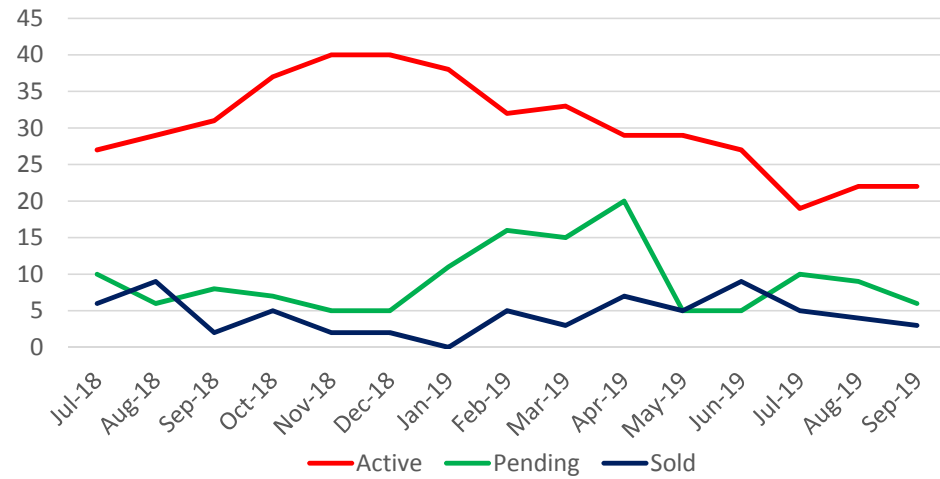
\$350,001-\$400,000



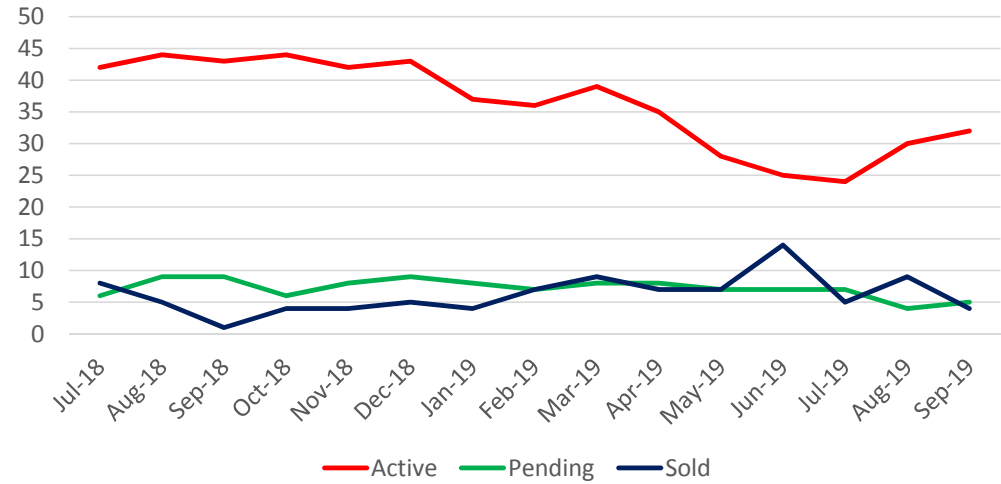
\$400,001-\$450,000



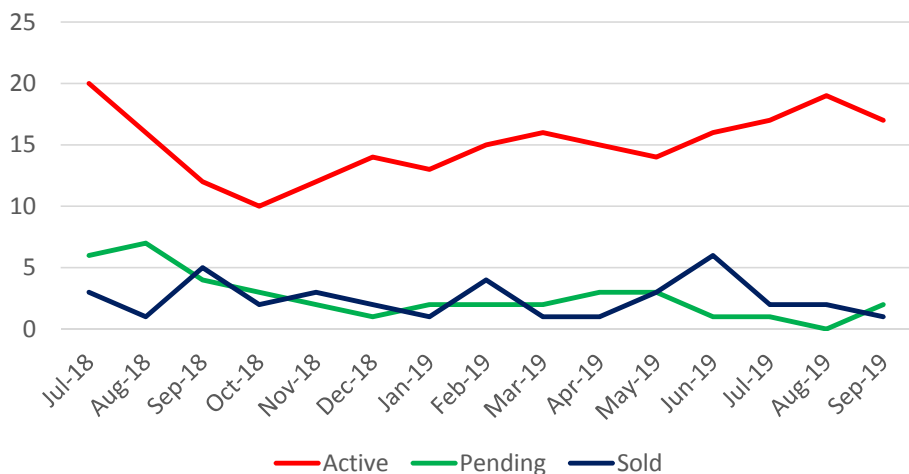
\$450,001-\$500,000



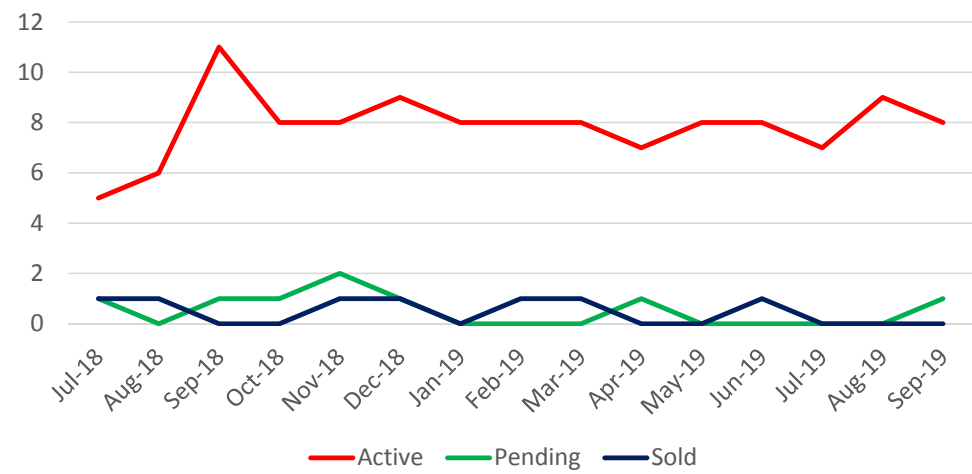
\$500,001-\$700,000



\$700,001-\$999,999



\$1,000,000 and up



Absorption Rate New Homes

in months

