



# Preston Report

Edmond Real Estate Market  
May 2016

Prepared by

**Brian Preston**

RE/MAX Associates



Mobile: 405-826-5725 Office: 405-359-8700

[bpreston88@sbcglobal.net](mailto:bpreston88@sbcglobal.net)

[www.Edmond4Sale.com](http://www.Edmond4Sale.com)

Realtor of the Year 1995 & 2002  
Lifetime Achievement 2009  
Most Cooperative Realtor 1992  
RE/MAX Hall of Fame

# Edmond Real Estate

## 2015 Residential Homes

	Active	Pending	Sold
January	1473	553	241
February	1563	642	220
March	1698	667	354
April	1705	654	335
May	1754	685	389
June			
July			
August			
September			
October			
November			
December			
		Total	1539

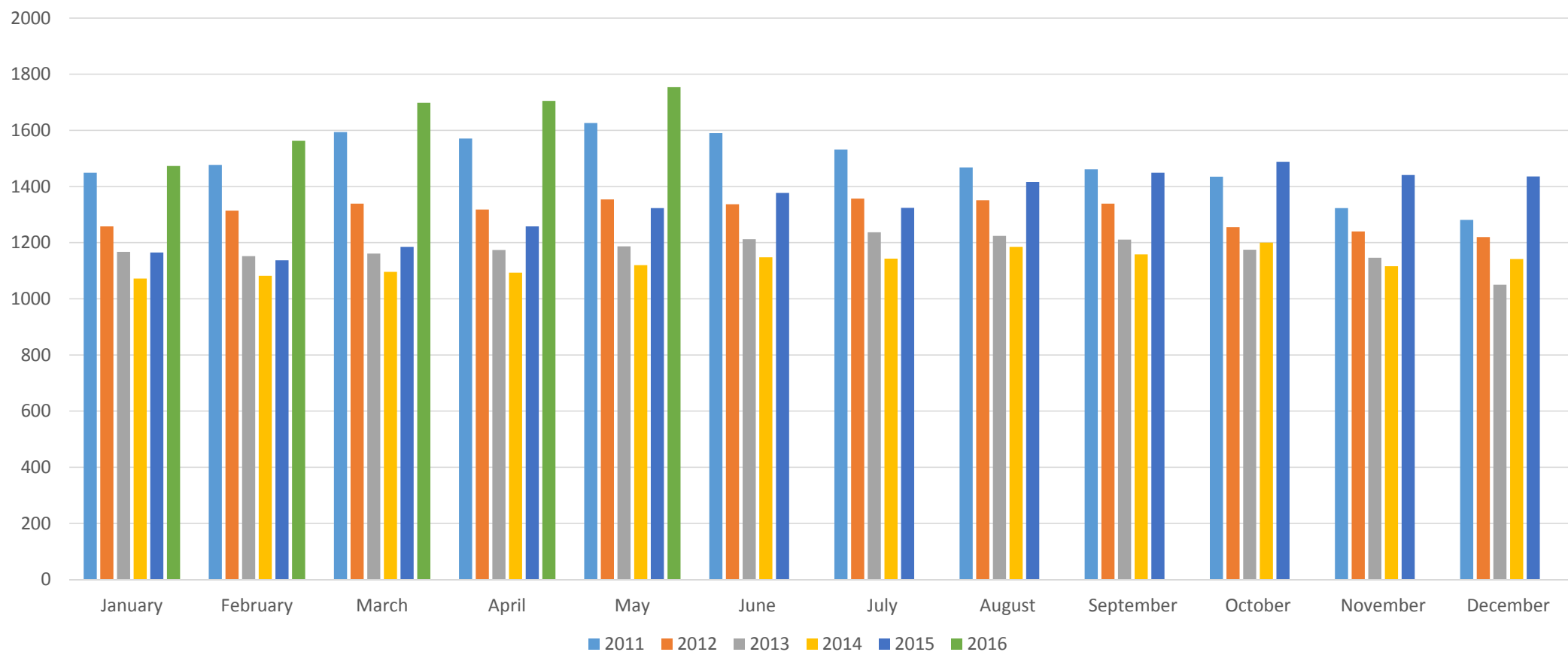
Preston Report

Based on information from MLSOK.com for the period (01/01/16) through (05/31/16) Edmond, Deer Creek and Oakdale School Districts, while information is deemed reliable it is not guaranteed

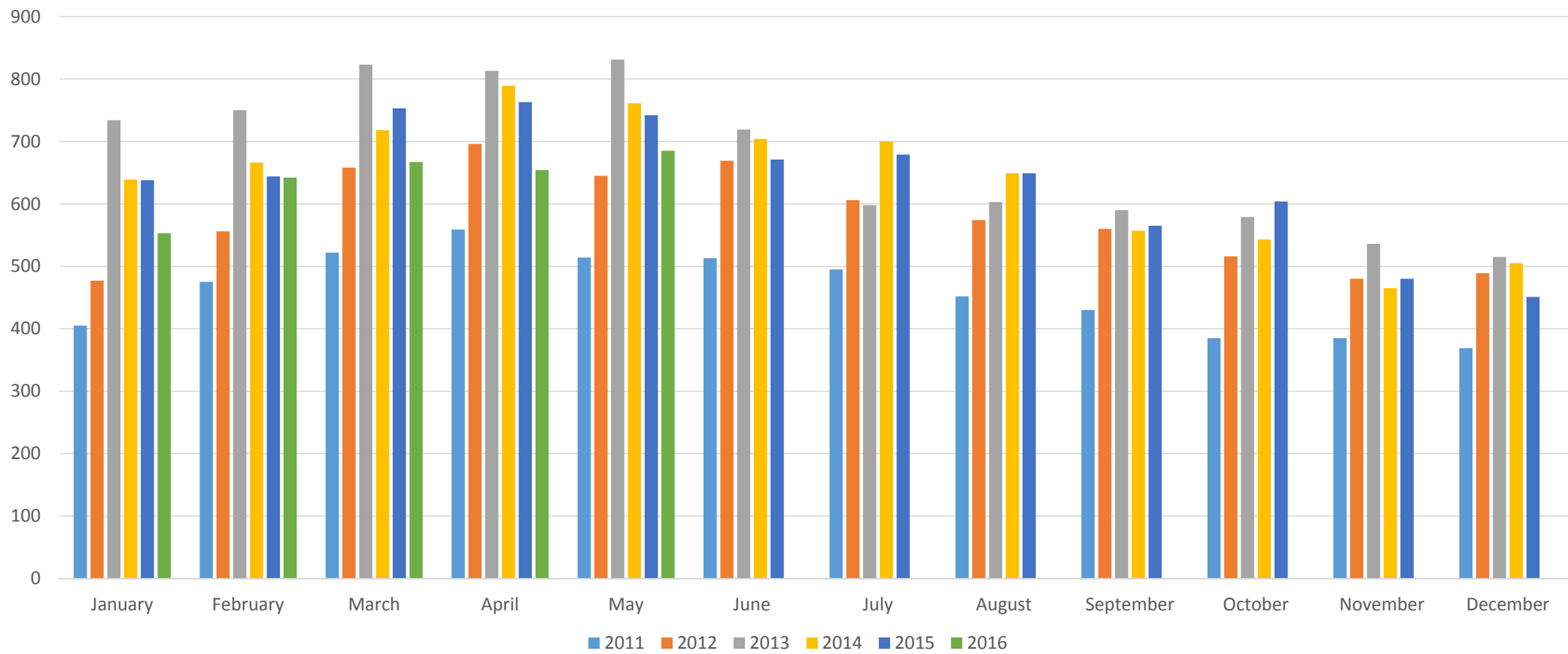
# Average Sales Price

	Average Price	Total Volume	Avg Price New Home	Total Volume New Homes
Jan.	\$264,128	\$63,654,848	\$332,761	\$14,307,820
Feb.	\$282,336	\$62,113,920	\$293,156	\$18,761,984
March	\$262,115	\$92,788,710	\$301,281	\$31,333,224
April	\$249,959	\$83,736,265	\$300,038	\$22,802,888
May	\$262,220	\$102,003,580	\$312,440	\$24,370,320
June				
July				
August				
Sept.				
Oct.				
Nov.				
Dec.				
Total	\$262,702	\$404,297,323	\$305,691	\$111,576,236

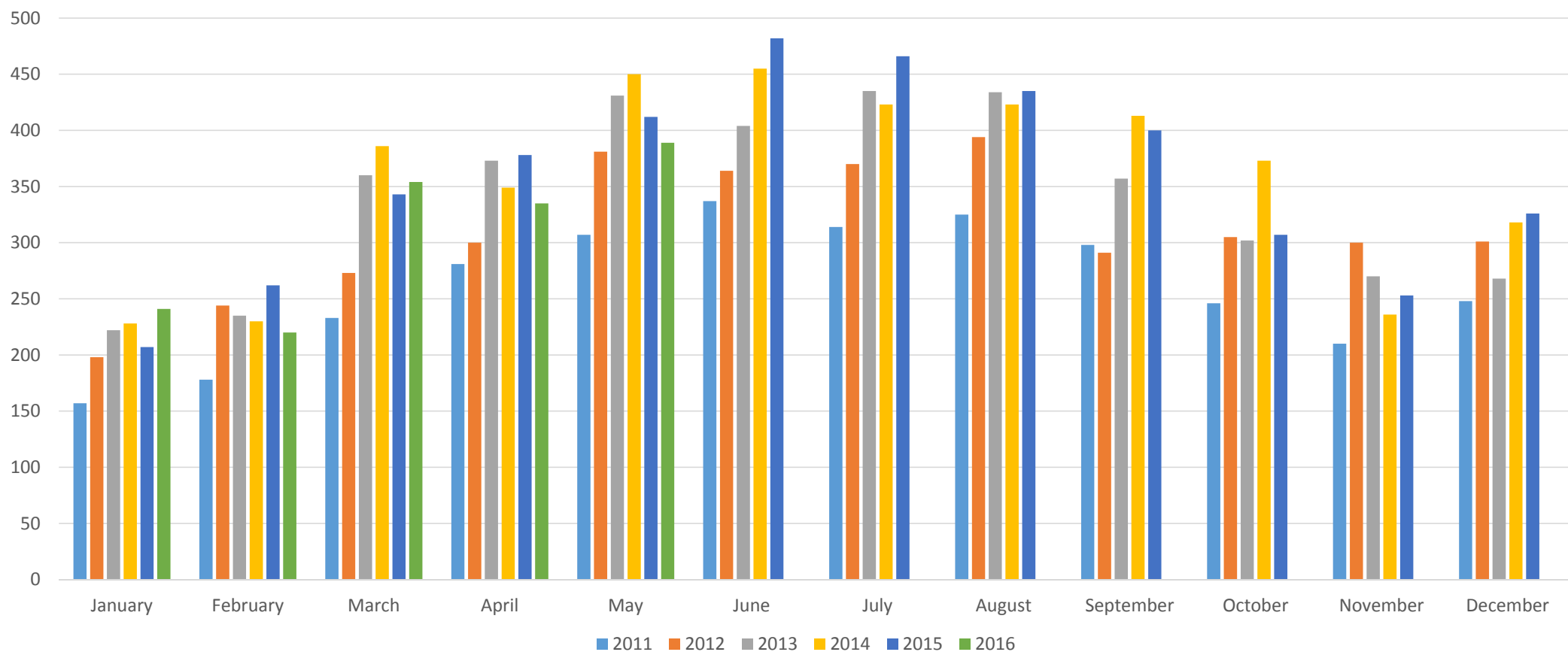
# Active Listings



# Under Contract



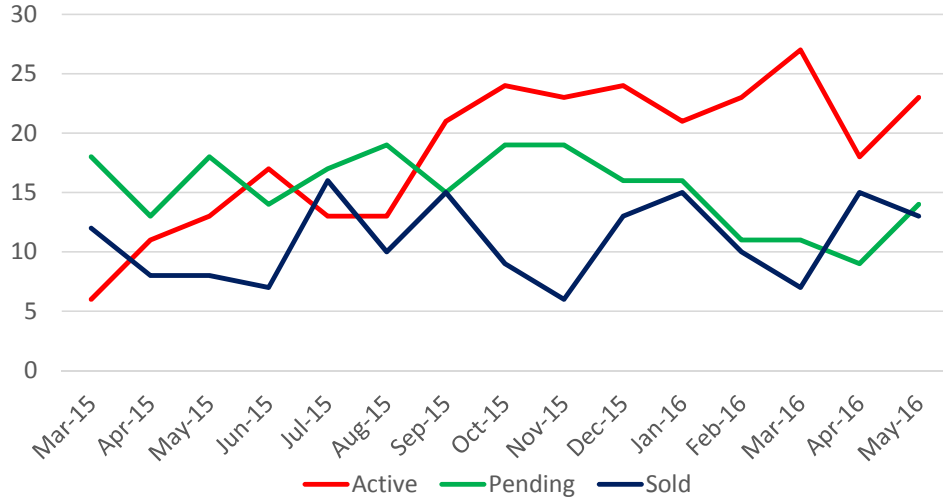
# Sold



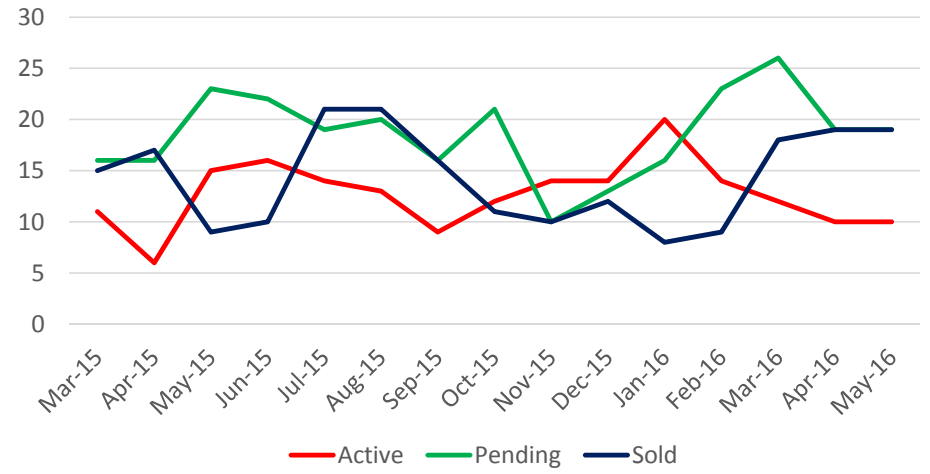
# Current Inventory vs. Homes Sold Edmond – May 2016

	Active	Pending	Sold YTD
<\$100,000	23	14	60
\$100-125k	10	19	73
\$125-150k	36	38	152
\$150-175k	71	74	174
\$175-200k	129	90	210
\$200-225k	114	69	127
\$225-250k	123	61	149
\$250-275k	136	40	116
\$275-300k	142	53	84
\$300-350k	212	62	118
\$350-400k	167	55	87
\$400-450K	114	47	53
\$450-500k	105	17	35
\$500-700k	189	29	70
\$700-1 mil	110	13	18
>\$1 million	73	4	13
<hr/>			
Total	1754	685	1539

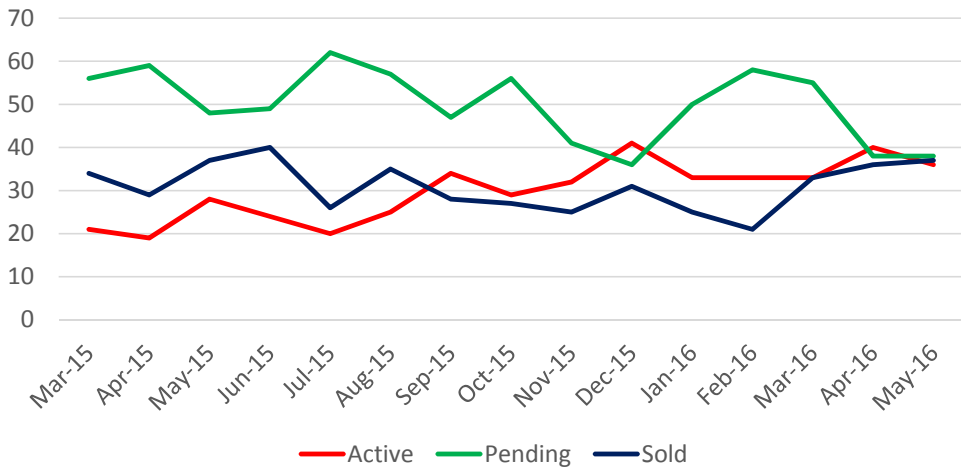
Under \$100,000



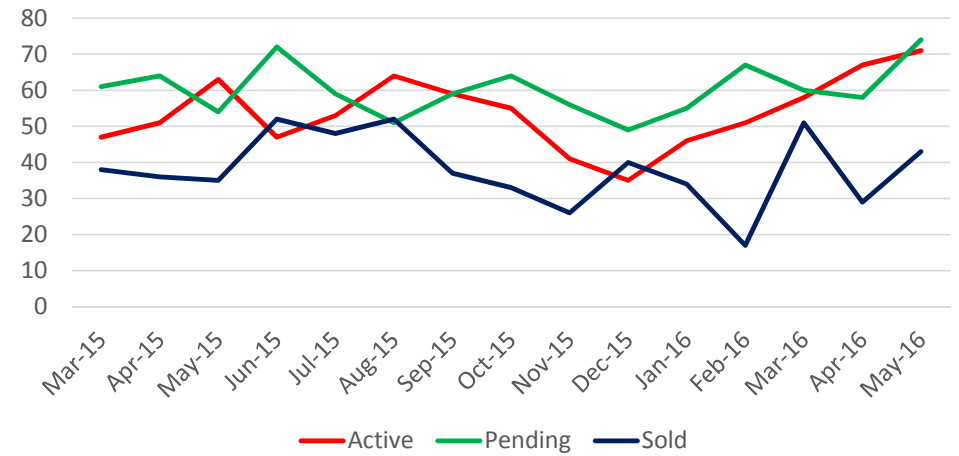
\$100,000-\$125,000



\$125,000-\$150,000

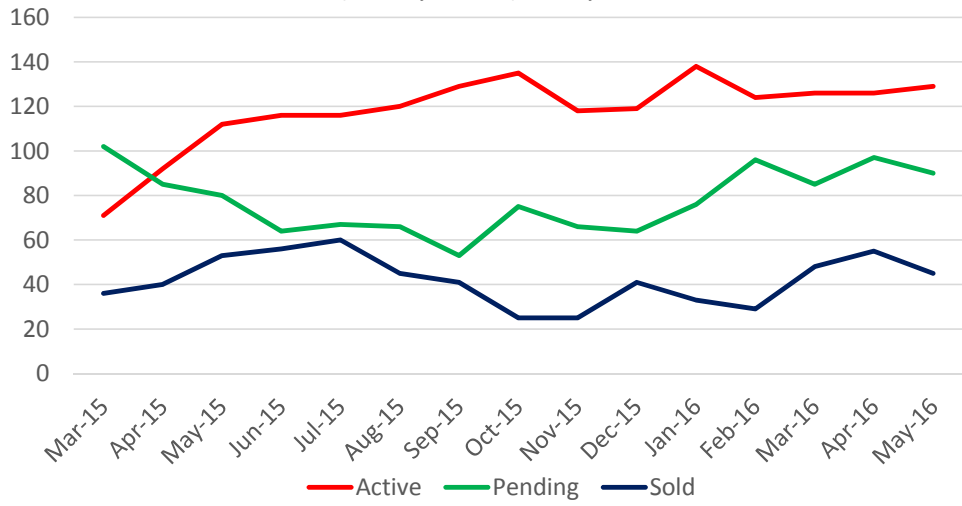


\$150,000-\$175,000

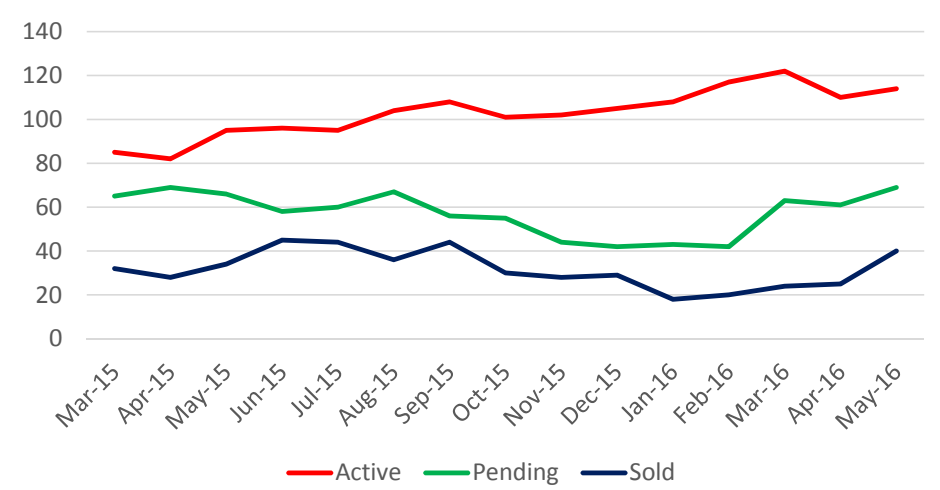




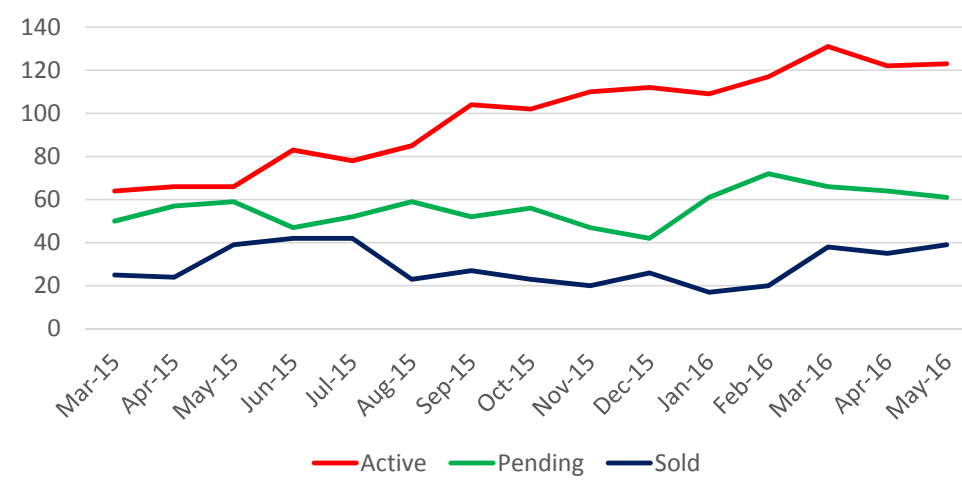
\$175,000-\$200,000



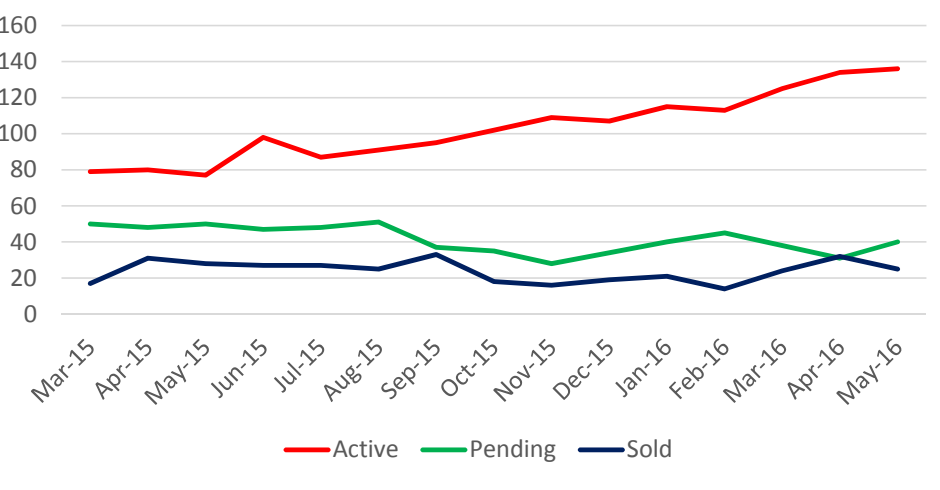
\$200,000-\$225,000



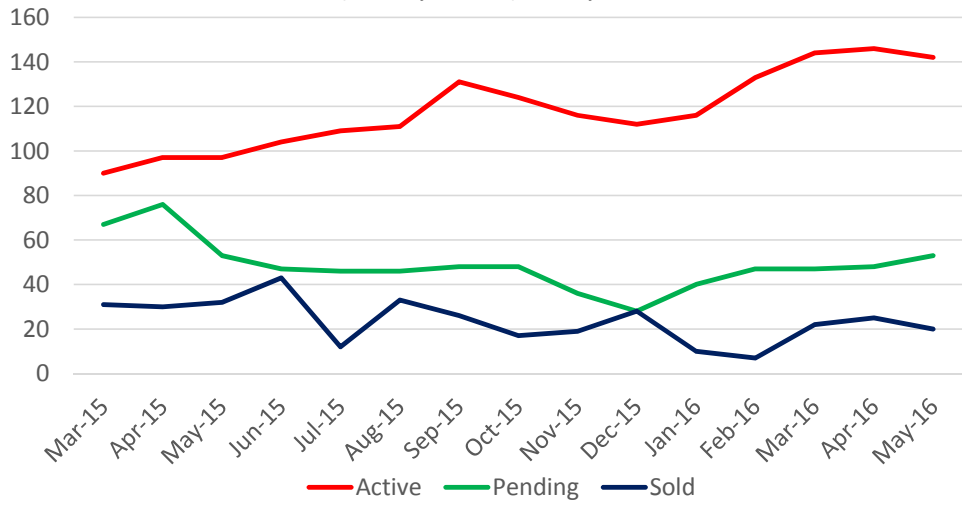
\$225,000-\$250,000



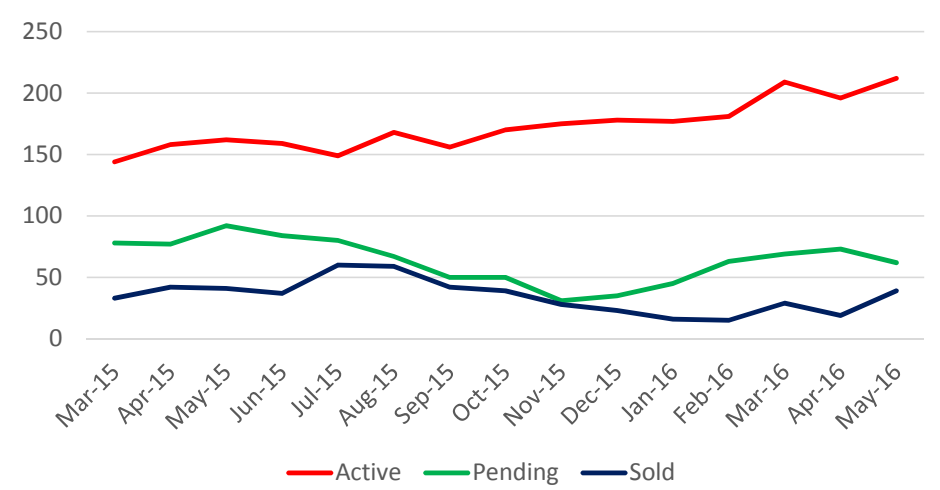
\$250,000-\$275,000



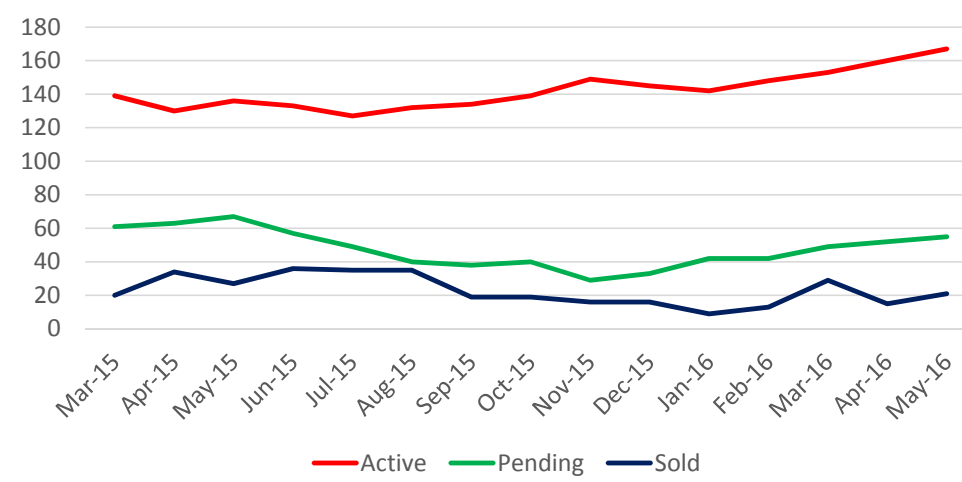
\$275,000-\$300,000



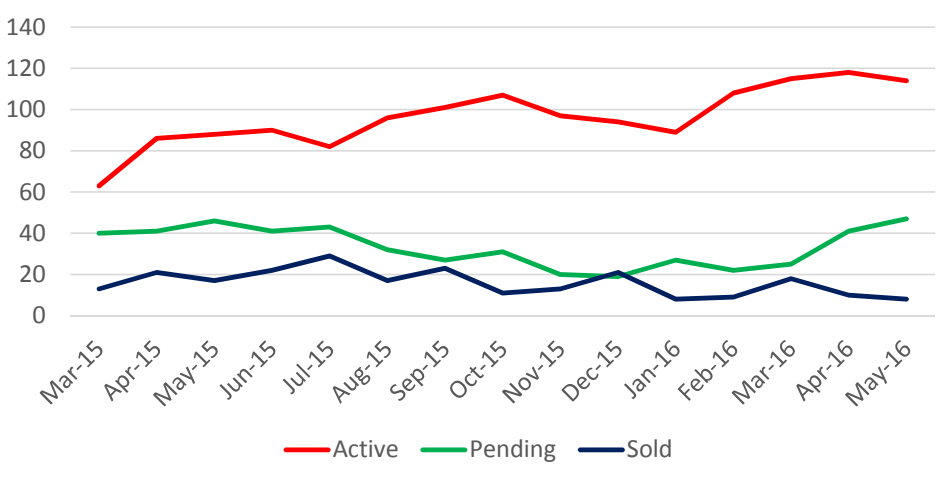
\$300,000-\$350,000



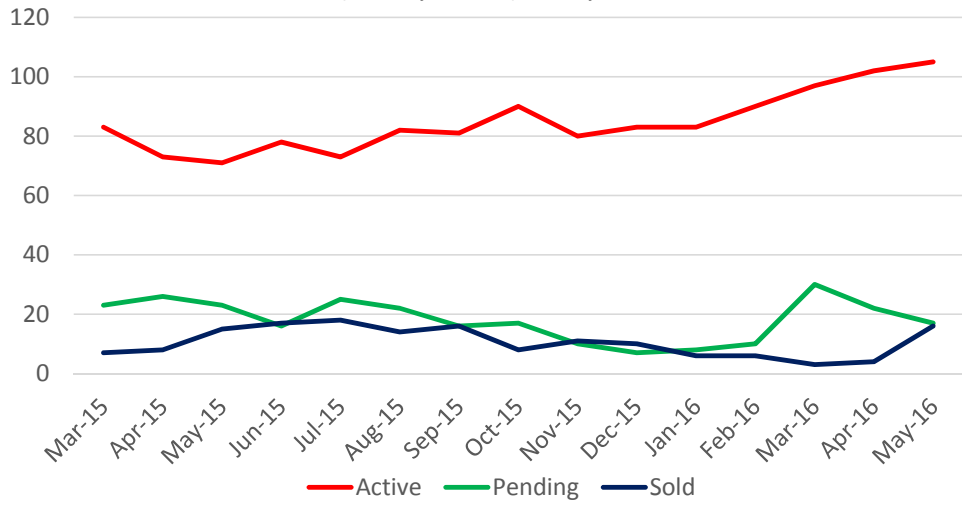
\$350,000-\$400,000



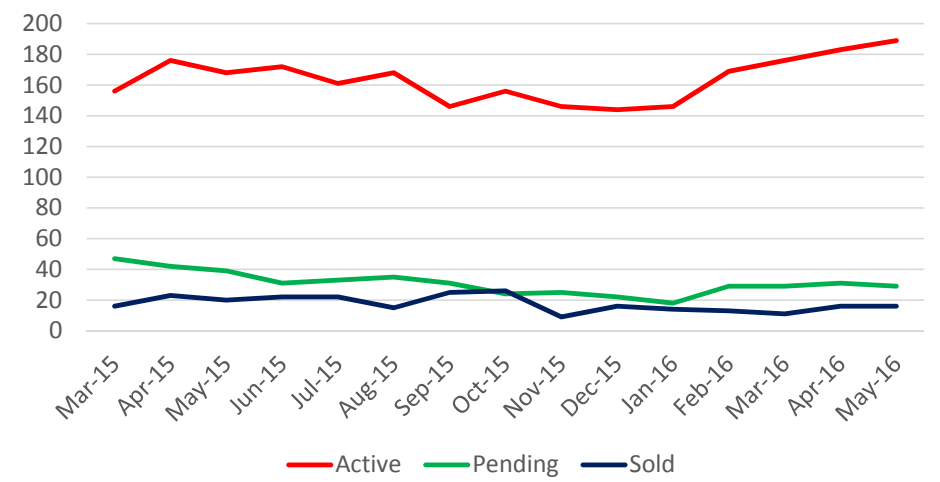
\$400,000-\$450,000



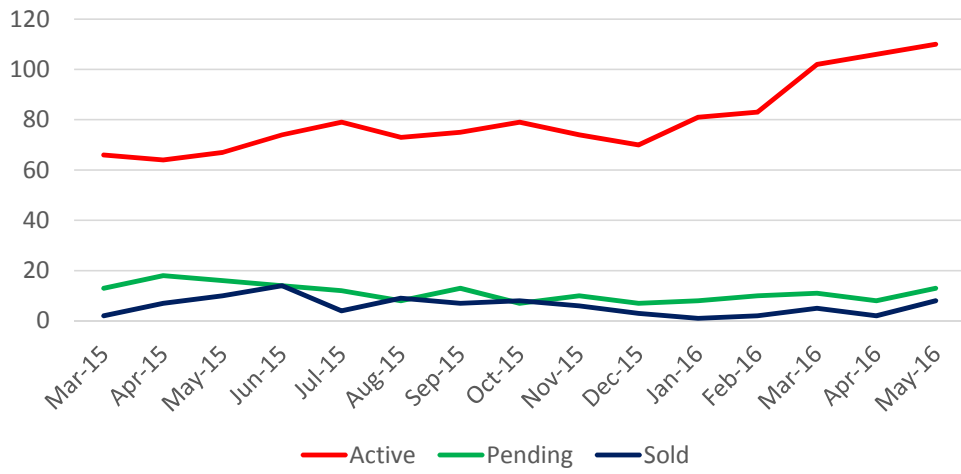
\$450,000-\$500,000



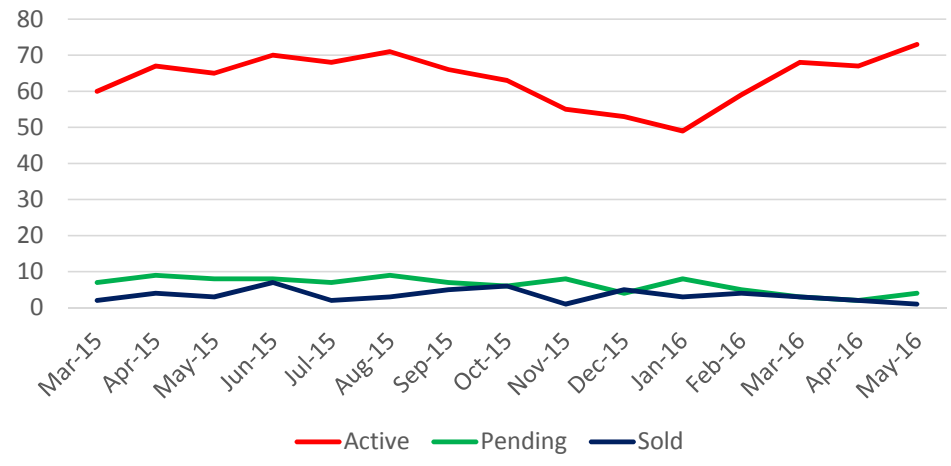
\$500,000-\$700,000



\$700,000-\$1,000,000

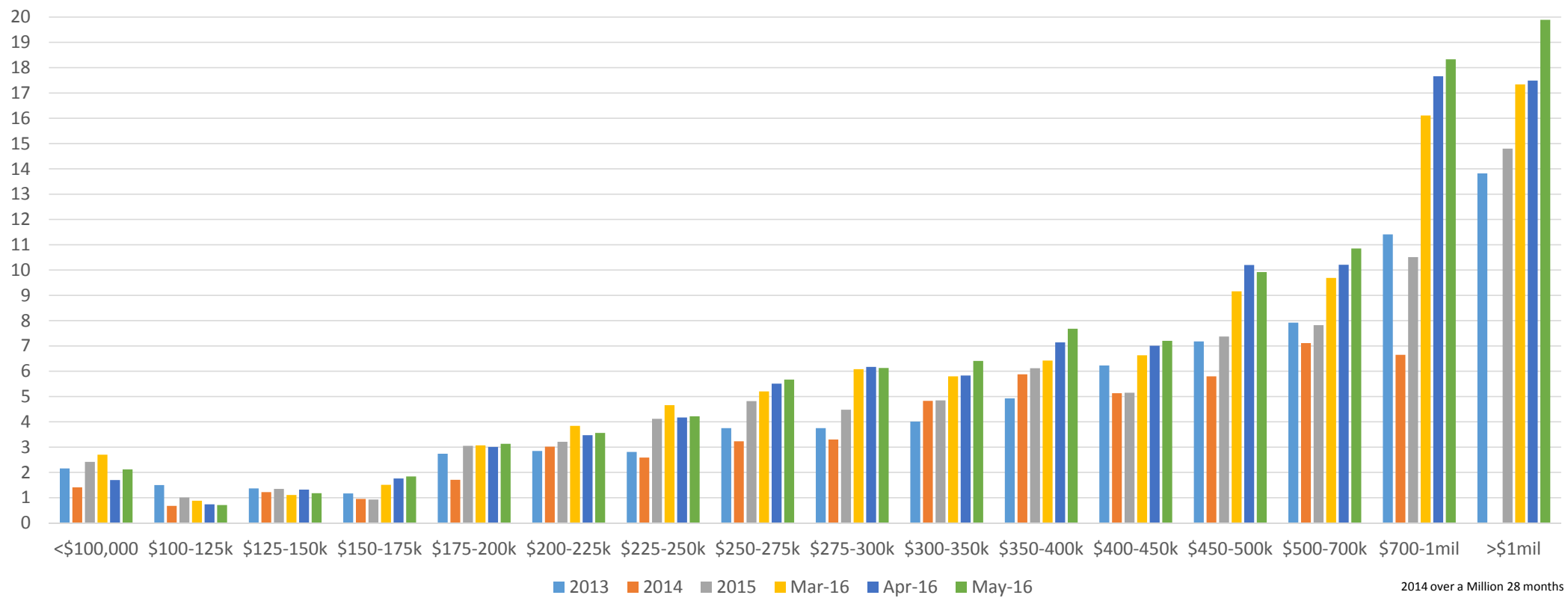


Over \$1,000,000



# Absorption Rates

In Months

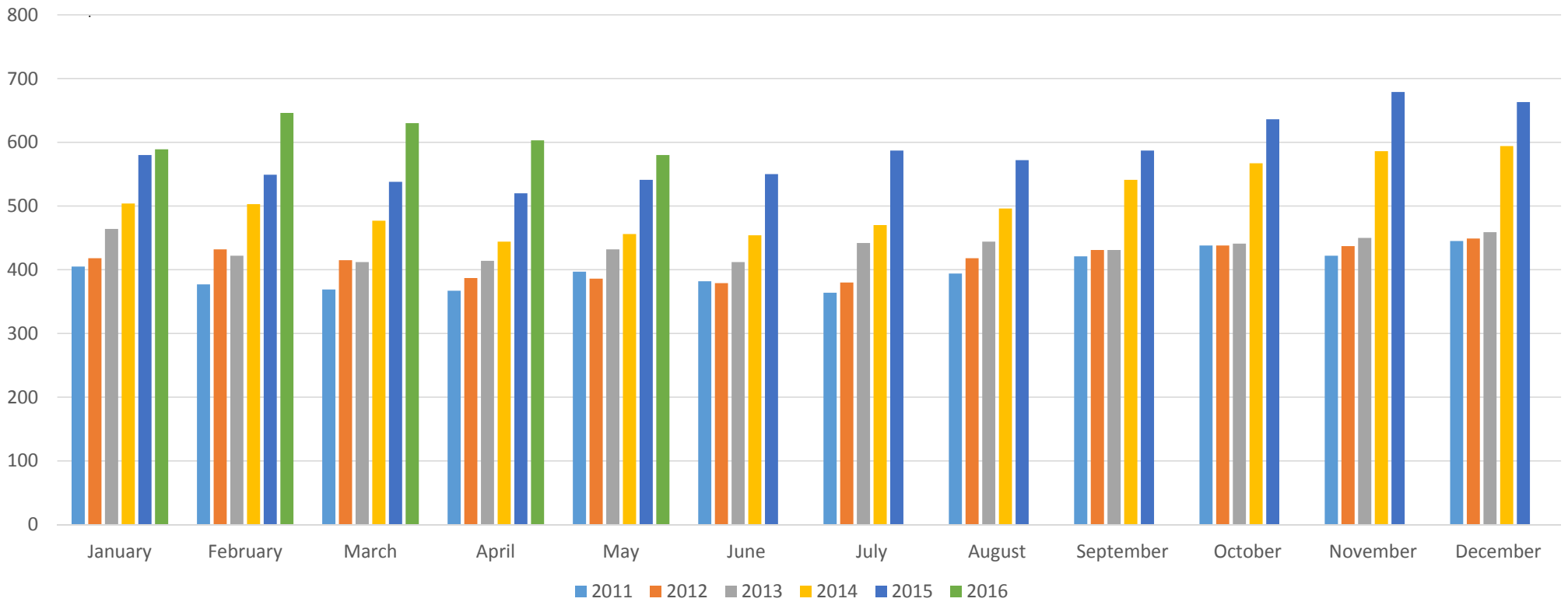


2014 over a Million 28 months

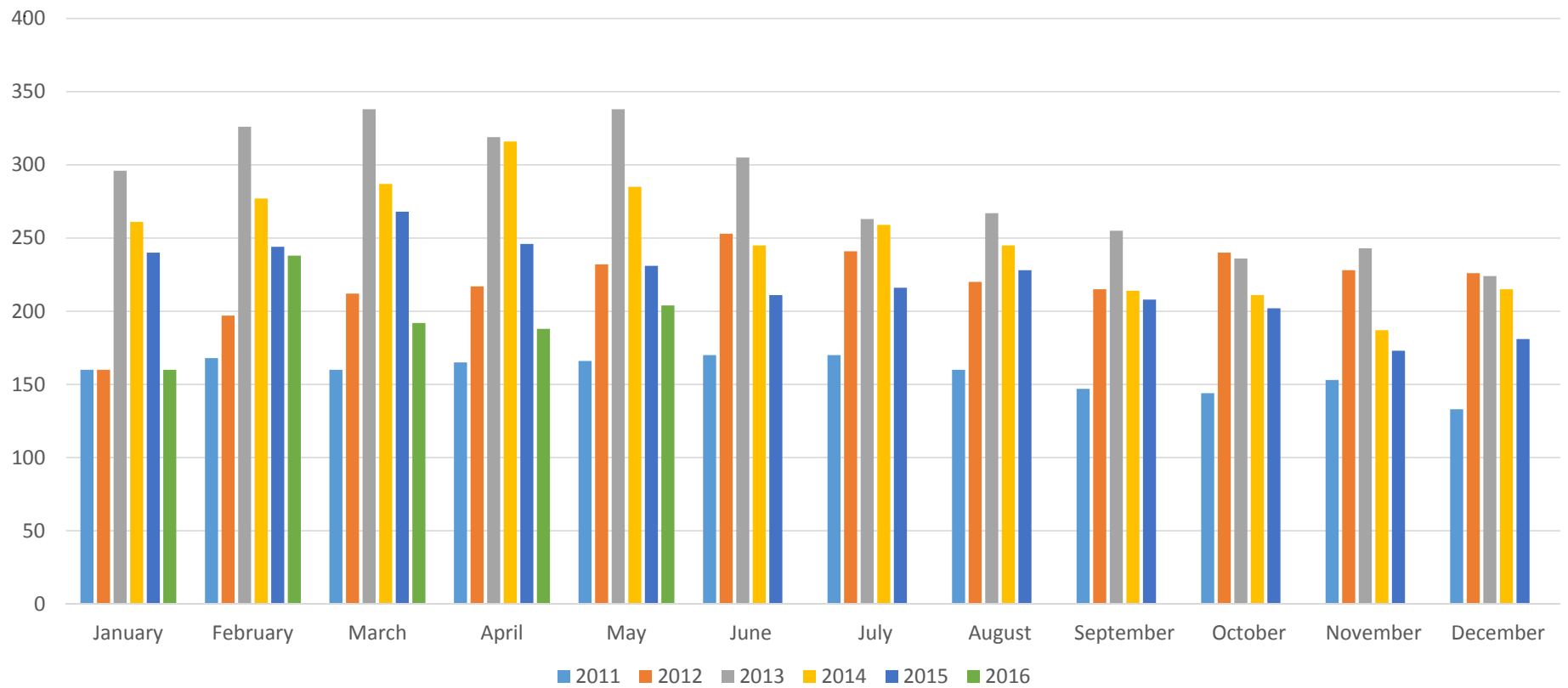
Current New Home Inventory  
vs.  
New Home Sales  
May 2016

	Active Listings	Under Contract	Sold-YTD
<\$200,000	29	32	79
\$200-250	93	43	87
\$250-300	129	37	55
\$300-350	89	22	44
\$350-400	82	29	31
\$400-450	40	19	23
\$450-500	35	6	18
\$500-700	52	13	24
\$700-1 Mil	26	3	2
> 1 Mil	5	0	2
<hr/>			
Total	580	204	365

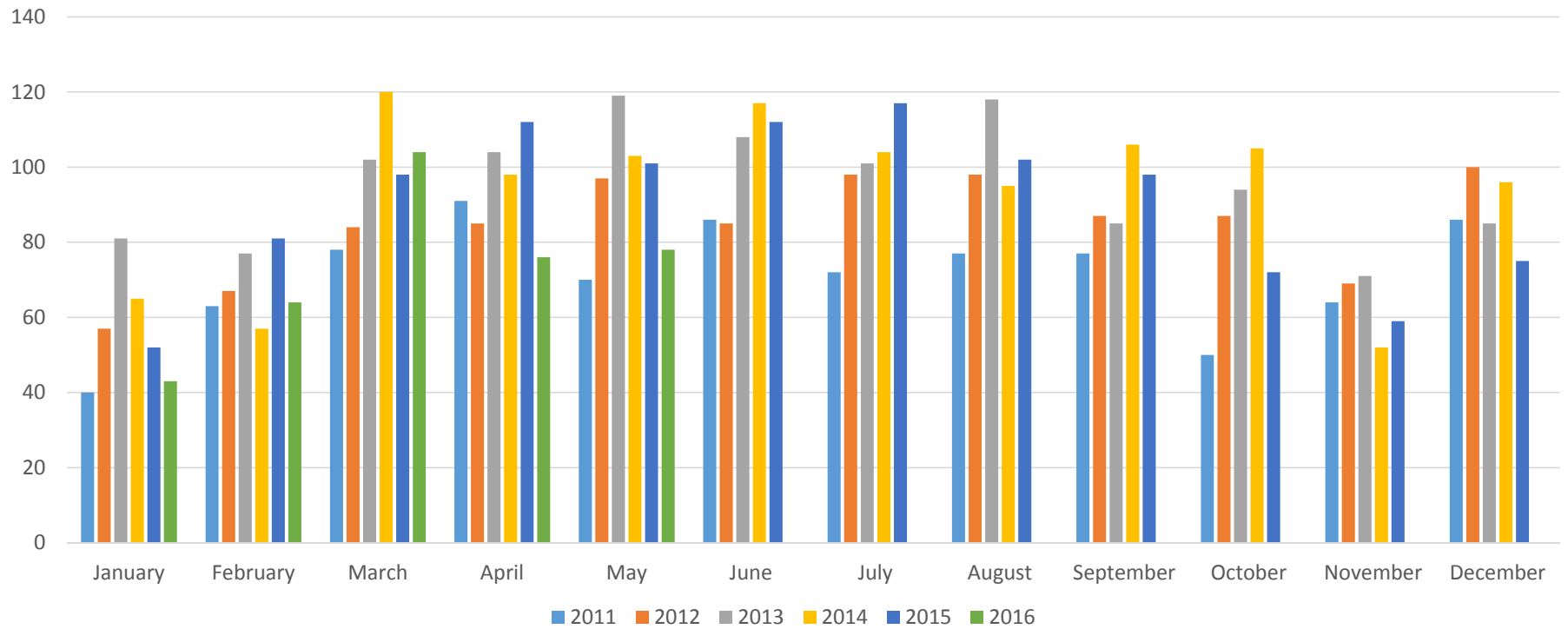
# New Homes Active



# New Homes Under Contract

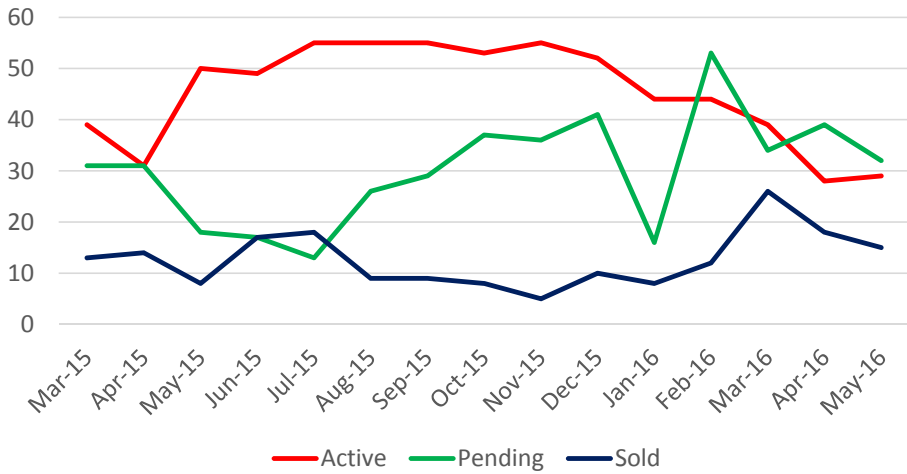


# New Homes Sold

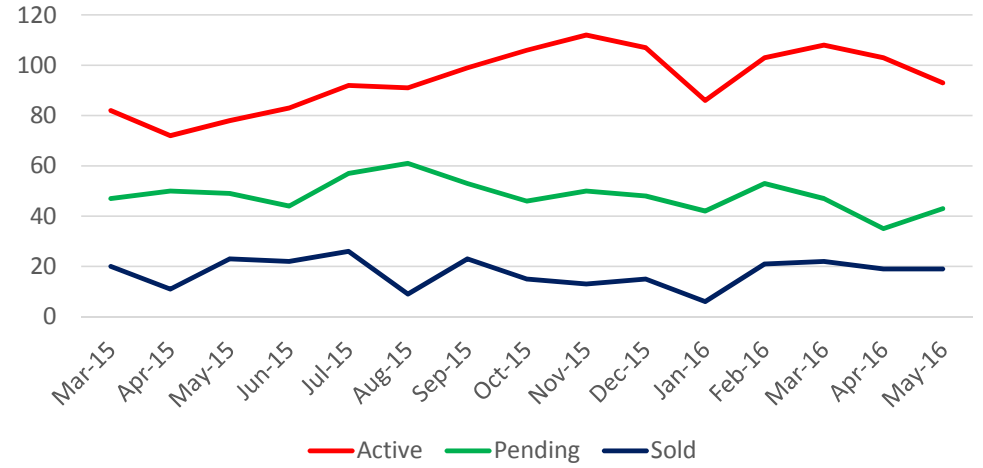




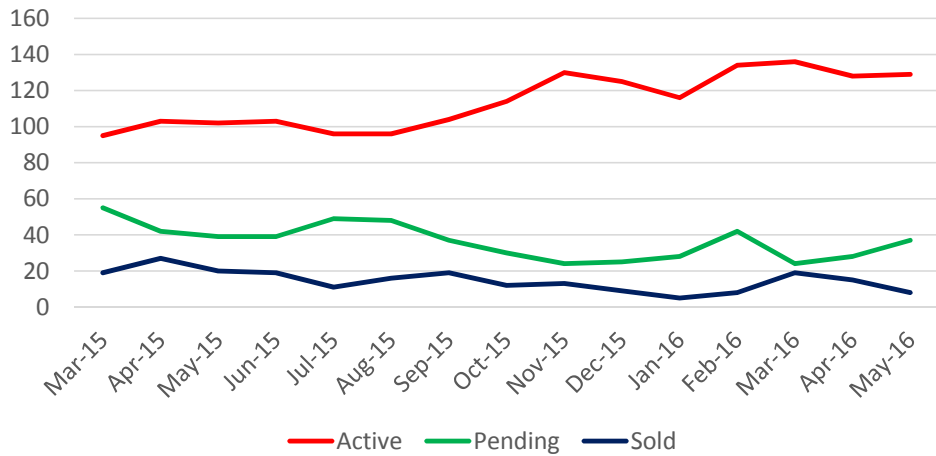
Under \$200,000



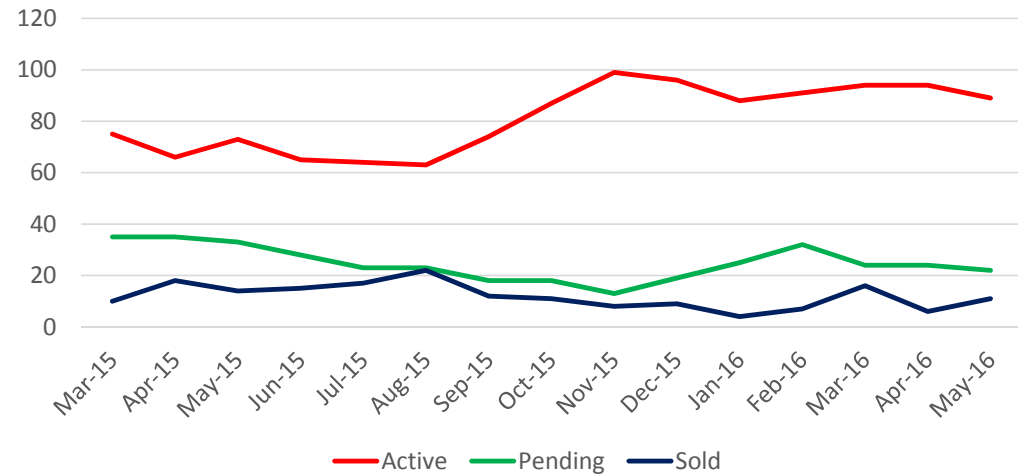
\$200,000-\$250,000



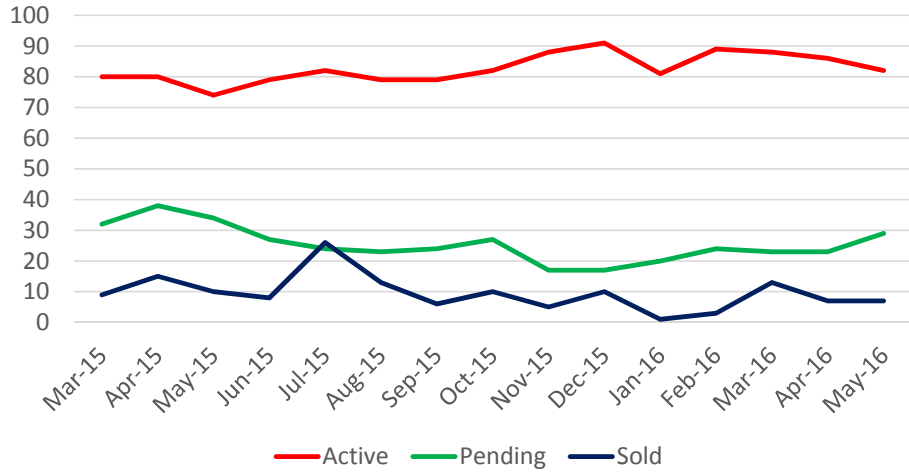
\$250,000-\$300,000



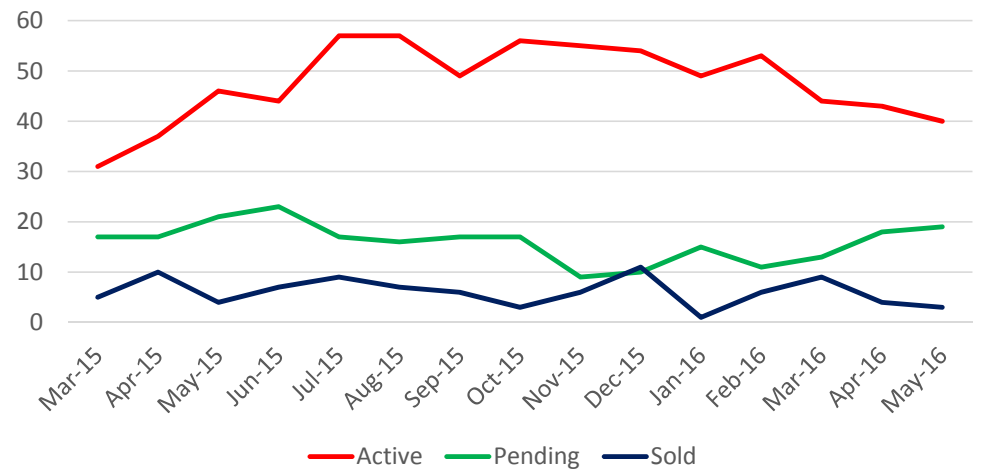
\$300,000-\$350,000



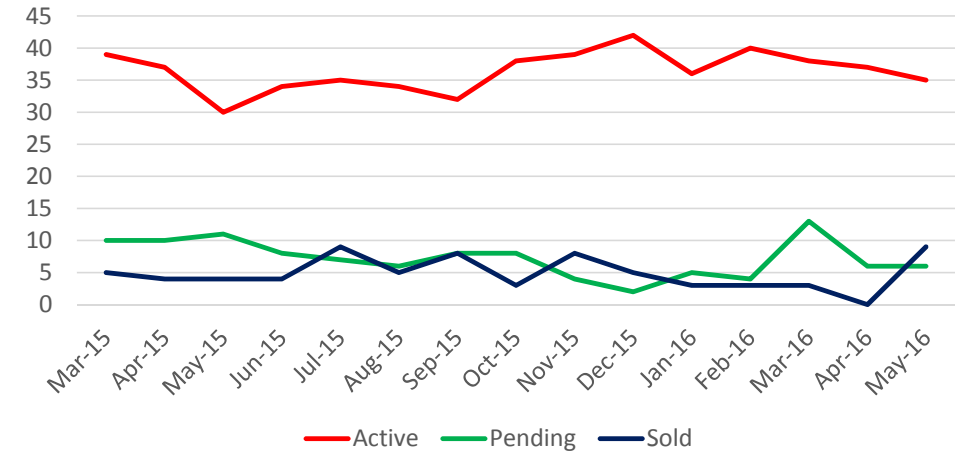
\$350,000-\$400,000



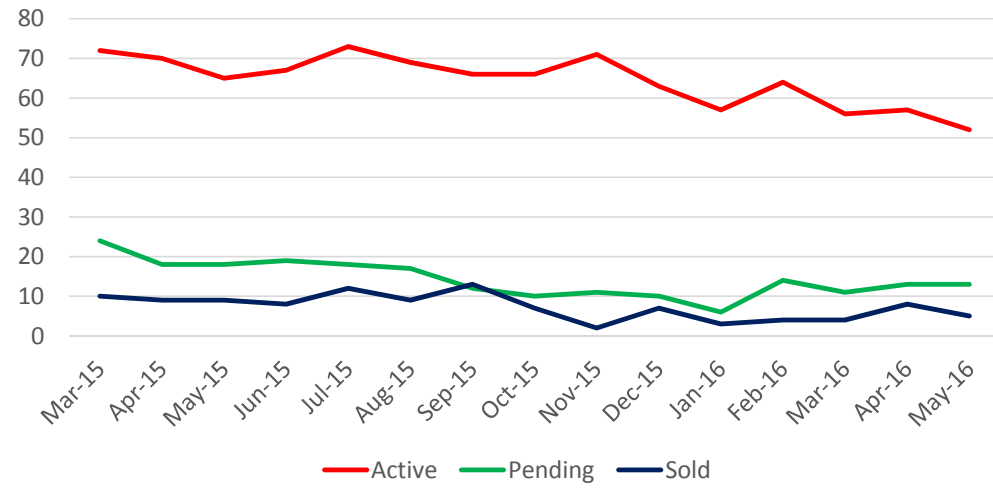
\$400,000-\$450,000



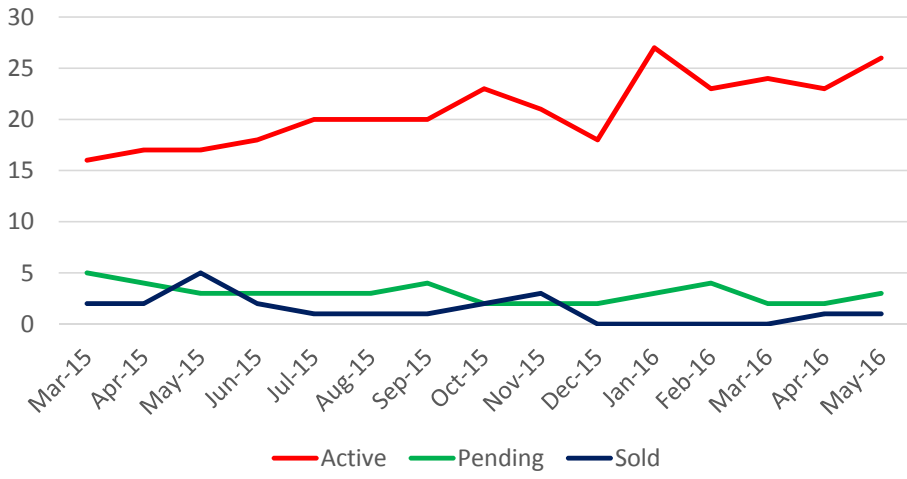
\$450,000-\$500,000



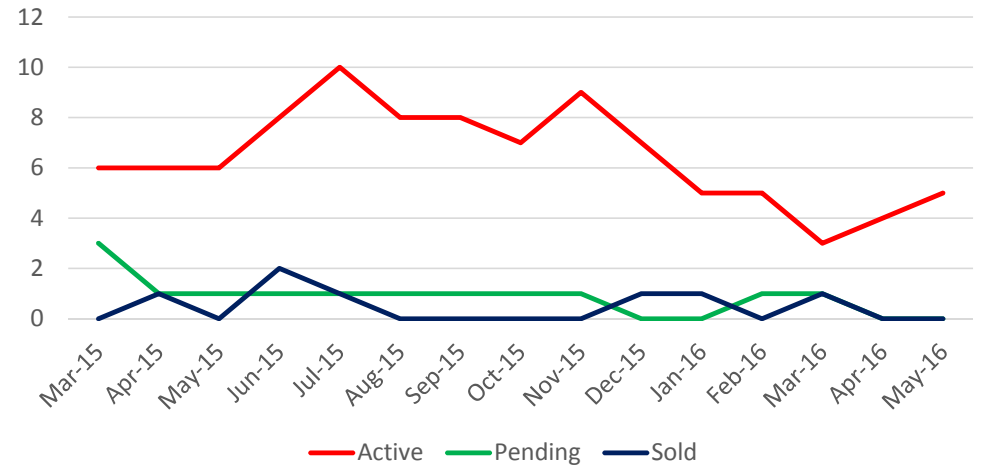
\$500,000-\$700,000



\$700,000-\$1,000,000



Over \$1,000,000



# Absorption Rate New Homes

in months

