



Preston Report

Edmond Real Estate market
January 2015

Prepared by

Brian Preston

RE/MAX Associates



Mobile: 405-826-5725 Office: 405-359-8700

bpreston88@sbcglobal.net

www.Edmond4Sale.com

Realtor of the Year 1995 & 2002
Lifetime Achievement 2009
Most Cooperative Realtor 1992
RE/MAX Hall of Fame

Edmond Real Estate

2015 Residential Homes

	Active	Pending	Sold
January	1165	638	207
February			
March			
April			
May			
June			
July			
August			
September			
October			
November			
December			
		Total	207

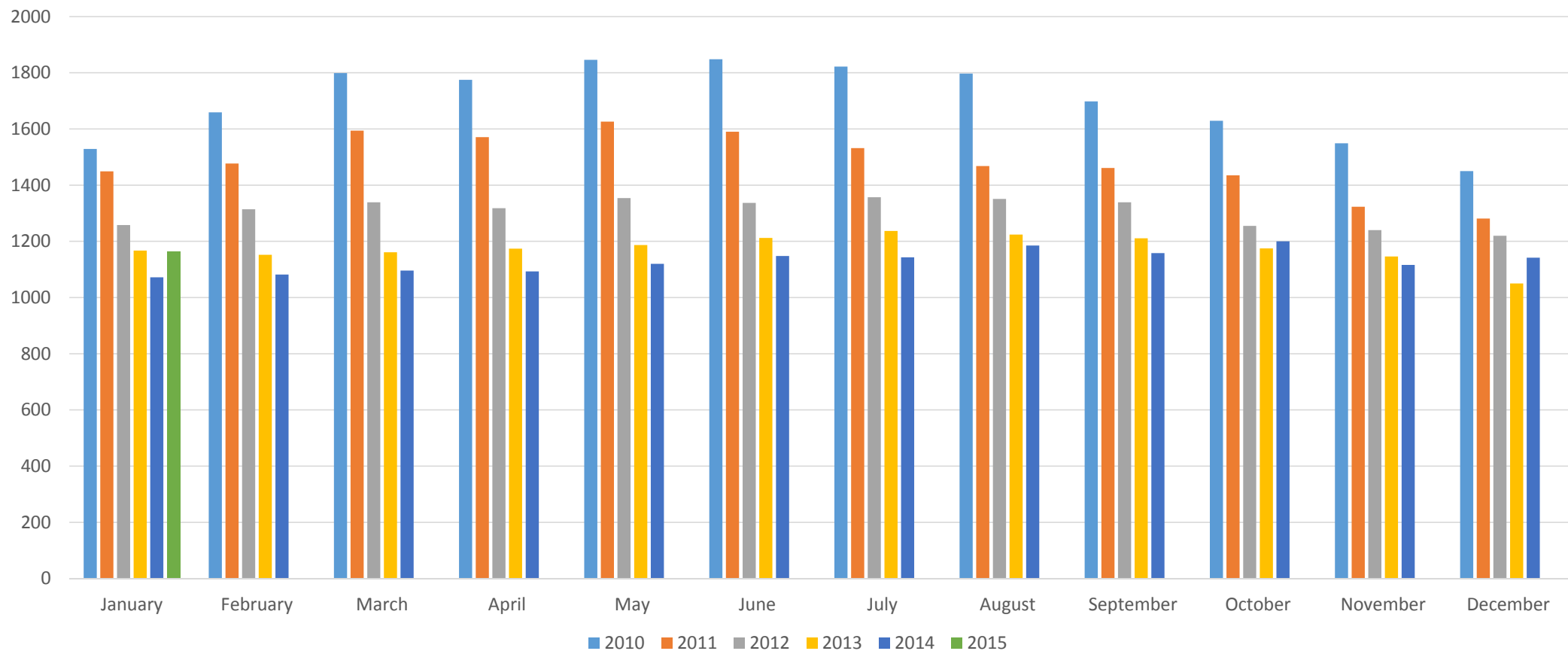
Preston Report

Based on information from MLSOK.com for the period (01/01/15) through (01/31/15) Edmond, Deer Creek and Oakdale School Districts, while information is deemed reliable it is not guaranteed

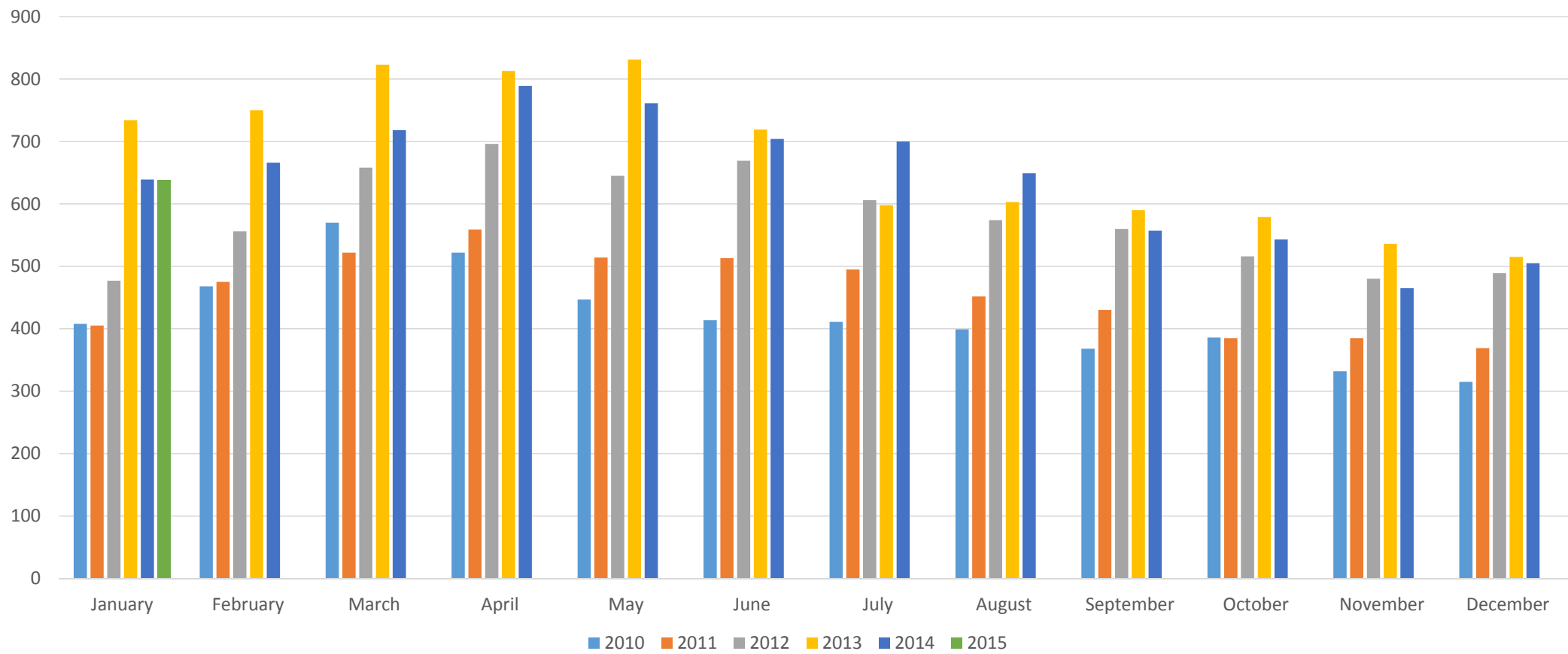
Average Sales Price

	Average Price	Total Volume	Avg Price New Home	Total Volume New Homes
Jan.	\$290,318	\$60,095,826	\$331,162	\$16,558,100
Feb.				
March				
April				
May				
June				
July				
August				
Sept.				
Oct.				
Nov.				
Dec.				
Total	\$290,318	\$60,095,826	\$331,162	\$16,558,100

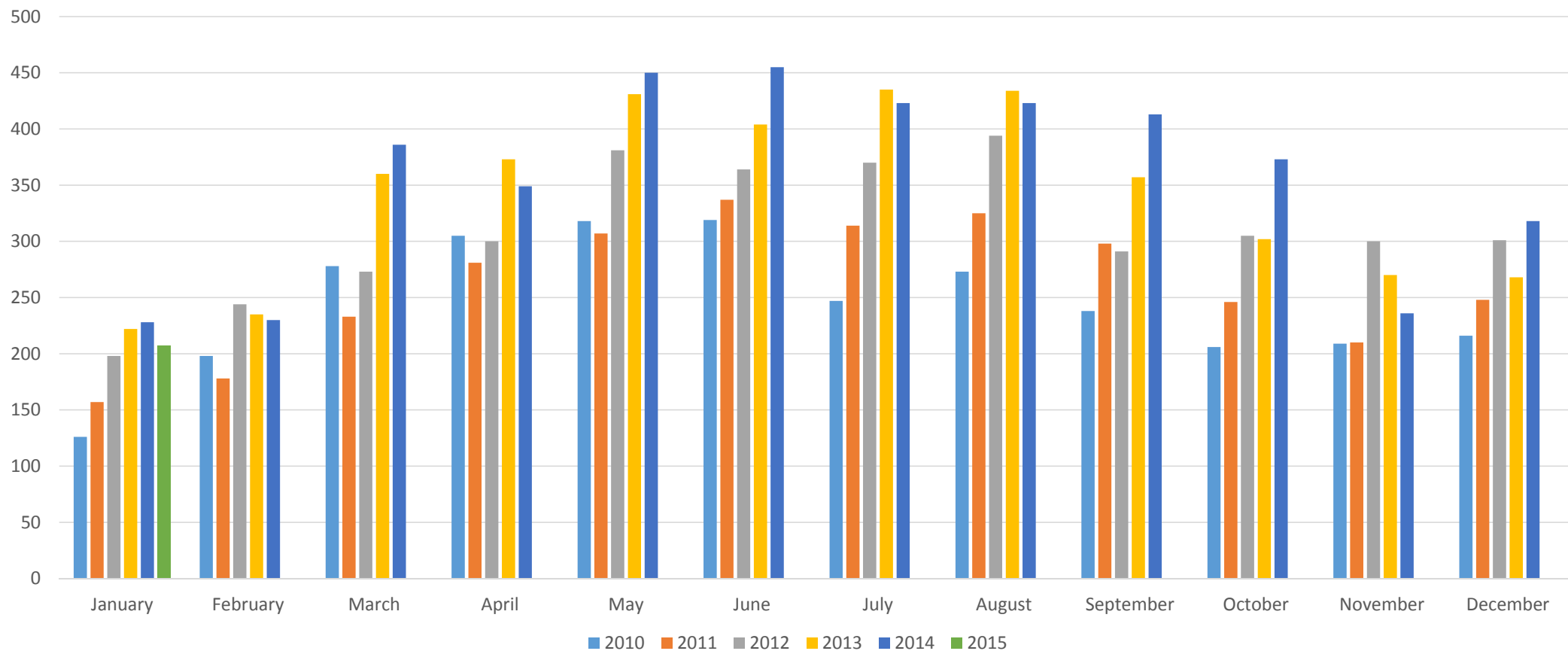
Active Listings



Under Contract



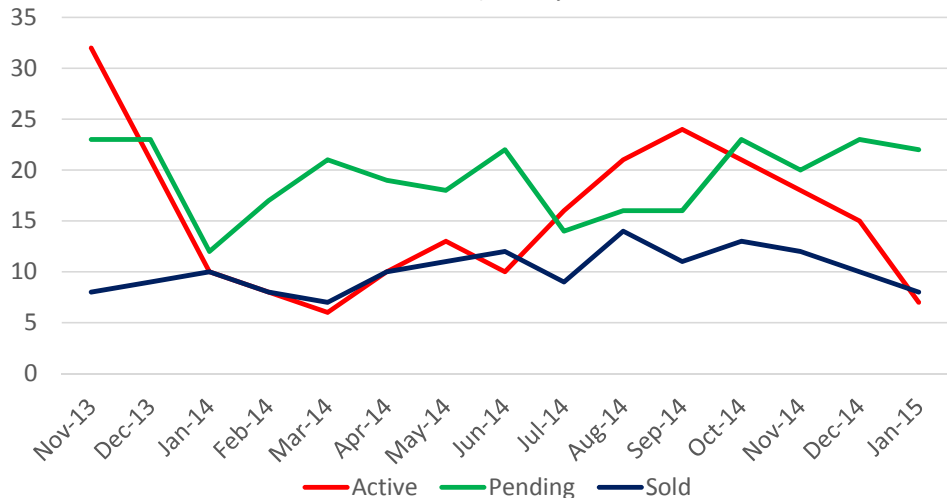
Sold



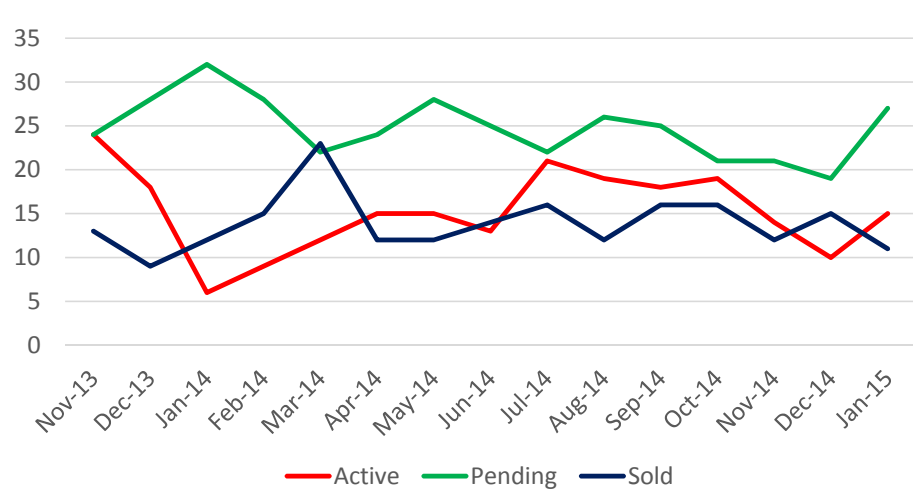
Current Inventory vs. Homes Sold Edmond – January 2015

	Active	Pending	Sold YTD
<\$100,000	7	22	8
\$100-125k	15	27	11
\$125-150k	24	64	17
\$150-175k	42	59	20
\$175-200k	72	74	18
\$200-225k	89	57	17
\$225-250k	73	37	17
\$250-275k	77	34	13
\$275-300k	81	65	15
\$300-350k	144	61	10
\$350-400k	135	44	13
\$400-450K	74	33	19
\$450-500k	70	14	5
\$500-700k	141	34	17
\$700-1 mil	59	10	5
>\$1 million	57	3	2
<hr/> Total	1165	638	207

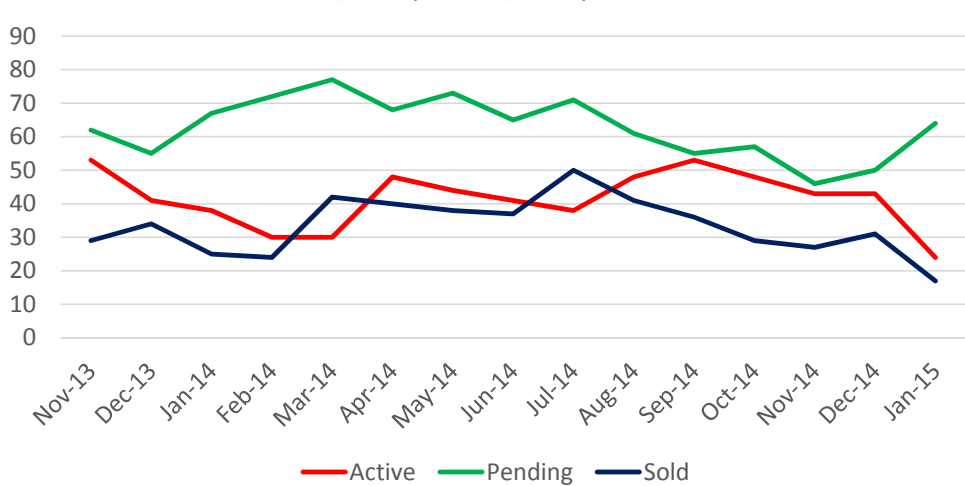
Under \$100,000



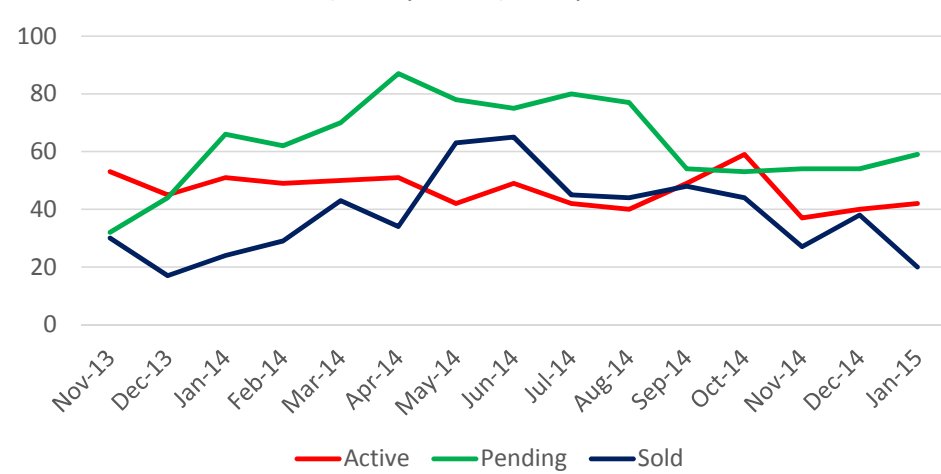
\$100,000-\$125,000



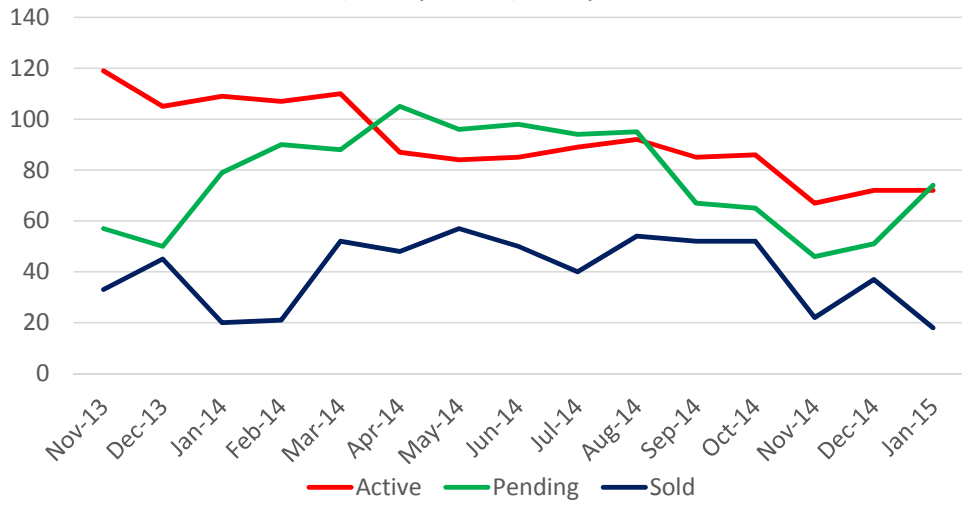
\$125,000-\$150,000



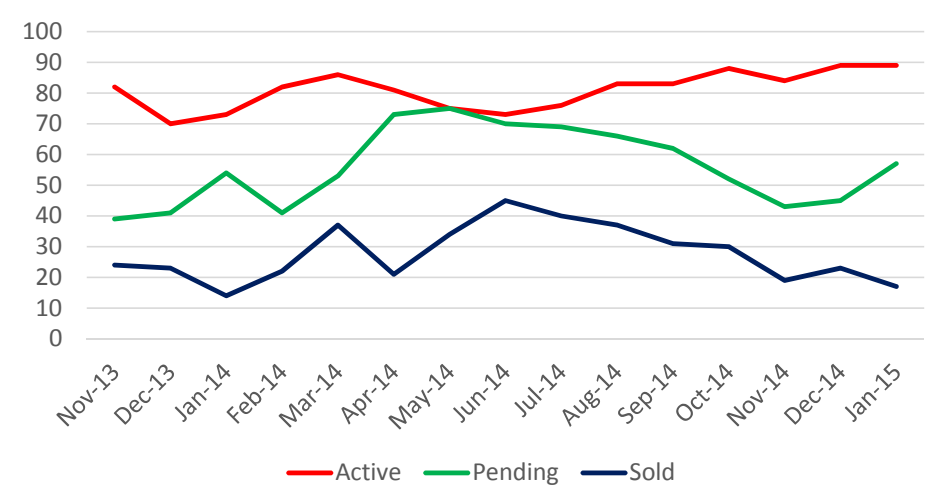
\$150,000-\$175,000



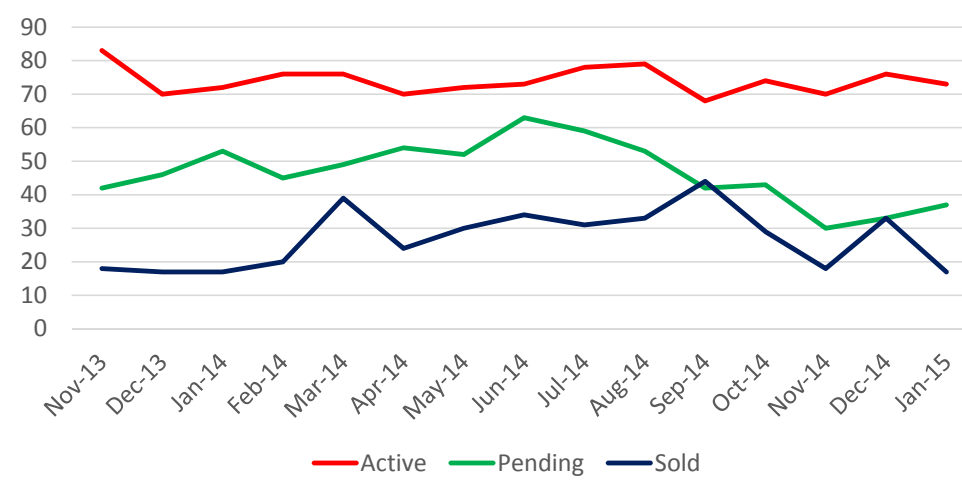
\$175,000-\$200,000



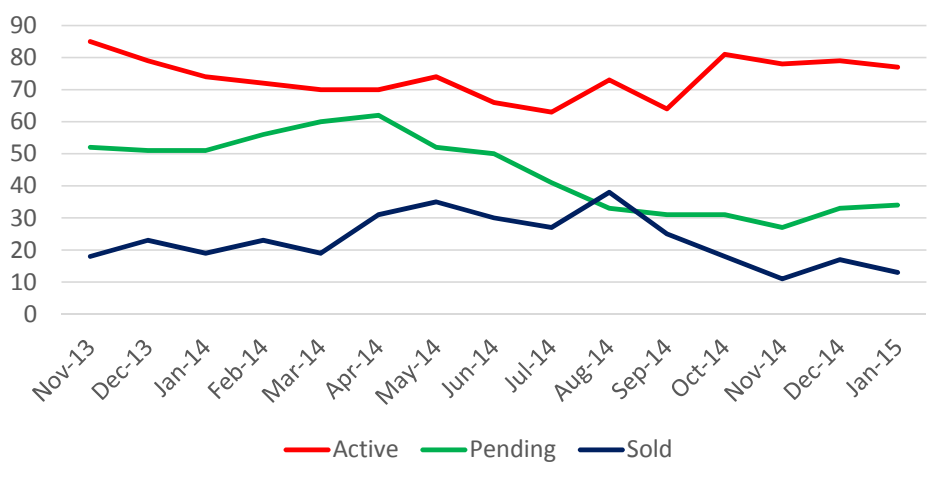
\$200,000-\$225,000



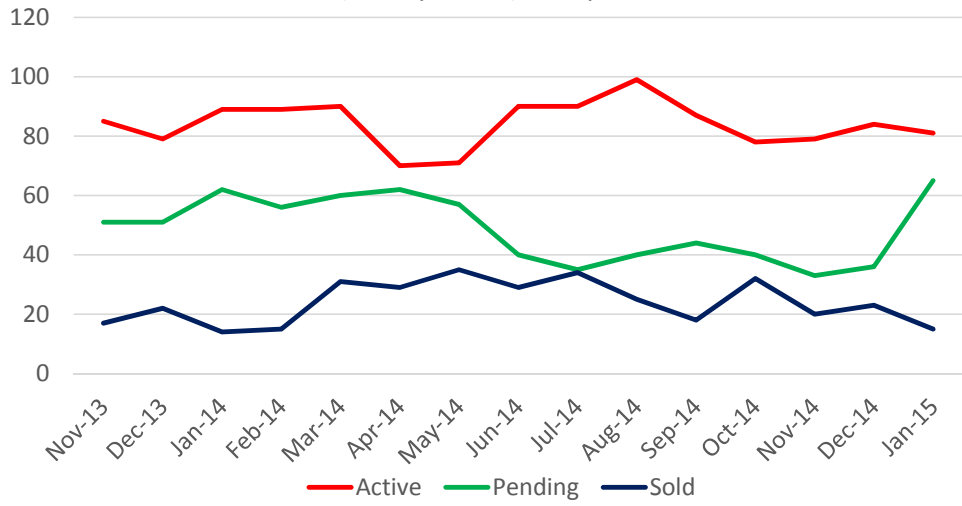
\$225,000-\$250,000



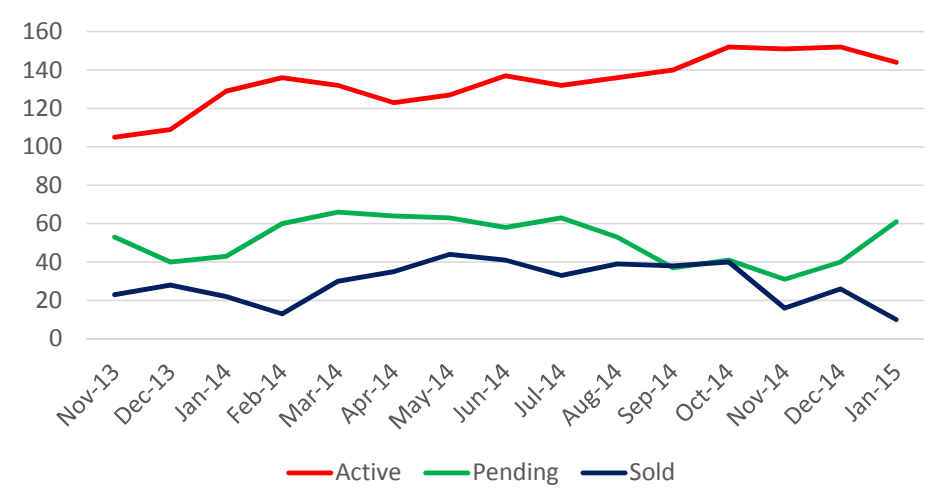
\$250,000-\$275,000



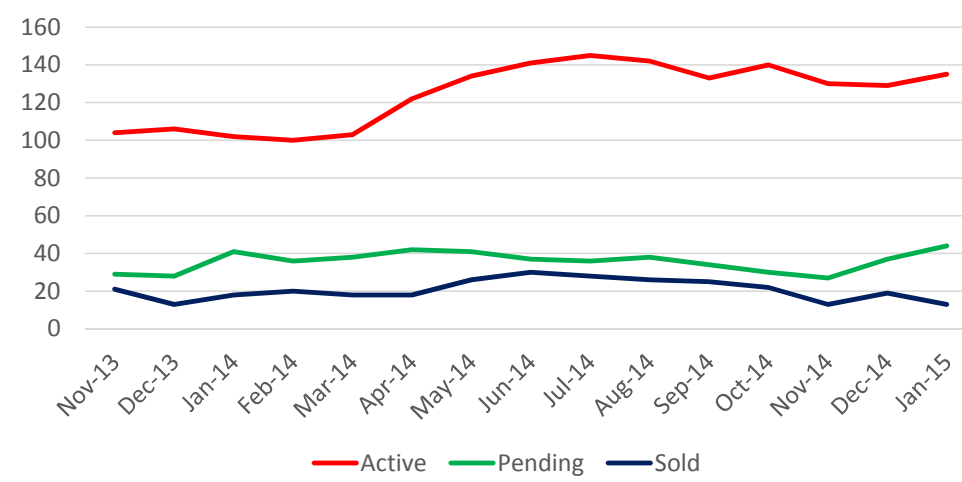
\$275,000-\$300,000



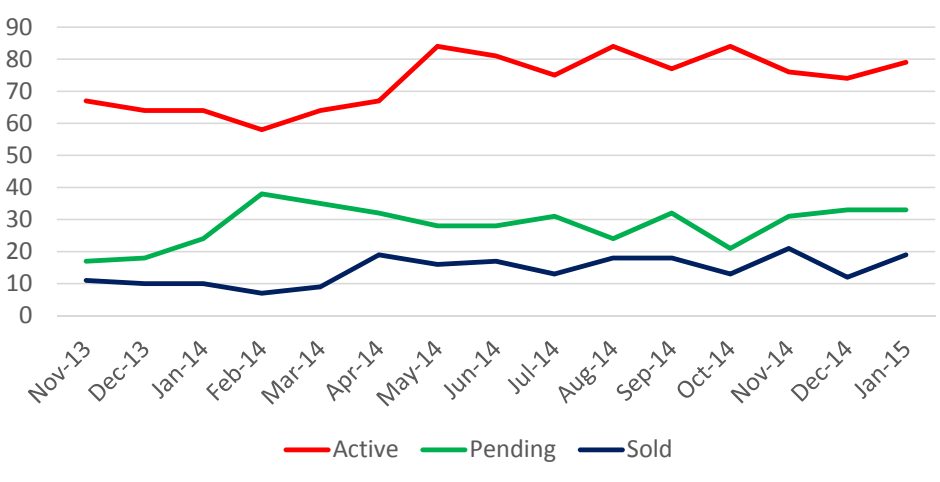
\$300,000-\$350,000



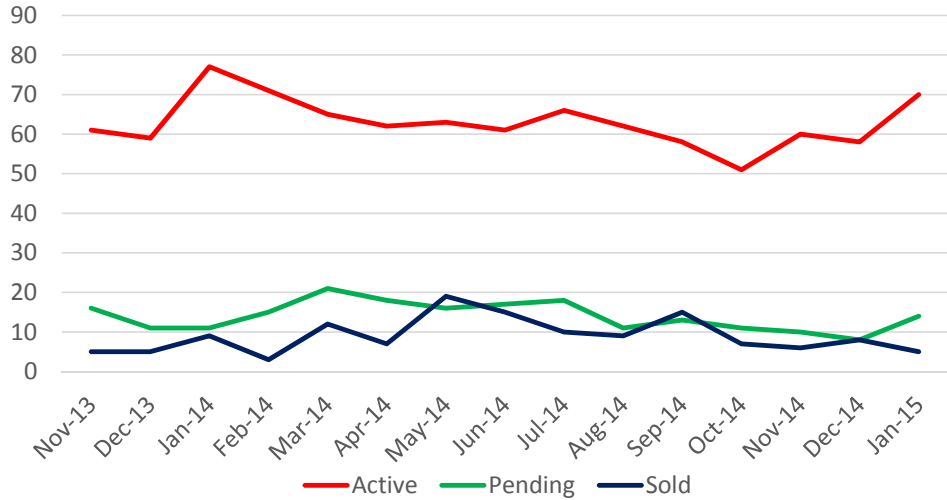
\$350,000-\$400,000



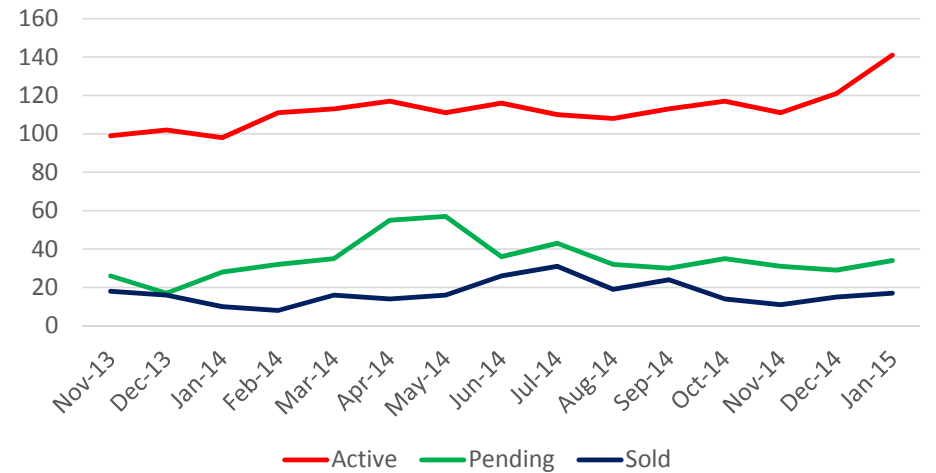
\$400,000-\$450,000



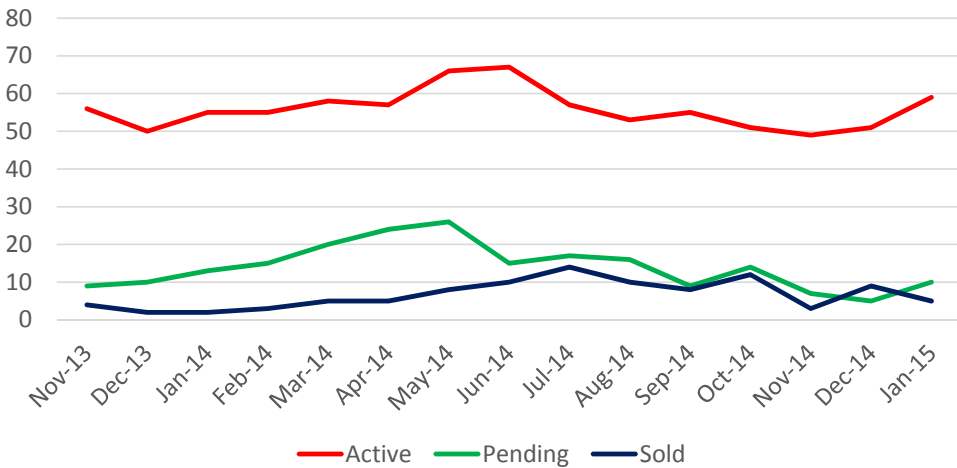
\$450,000-\$500,000



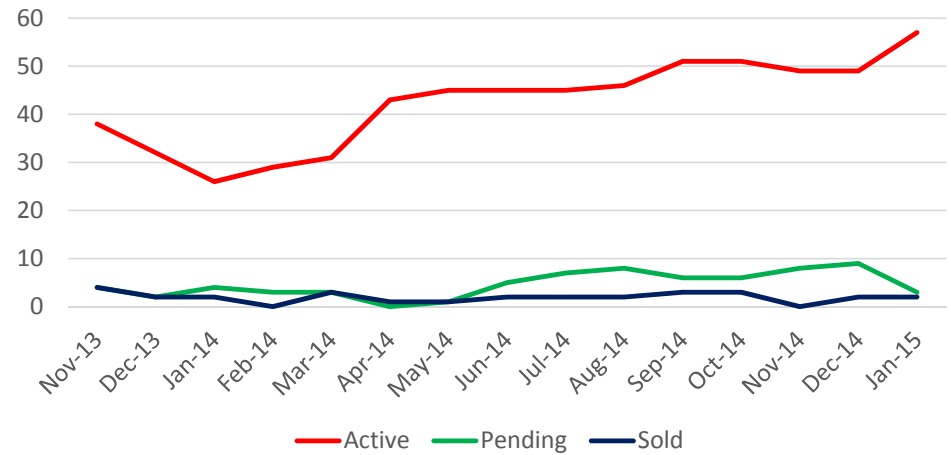
\$500,000-\$700,000



\$700,000-\$1,000,000

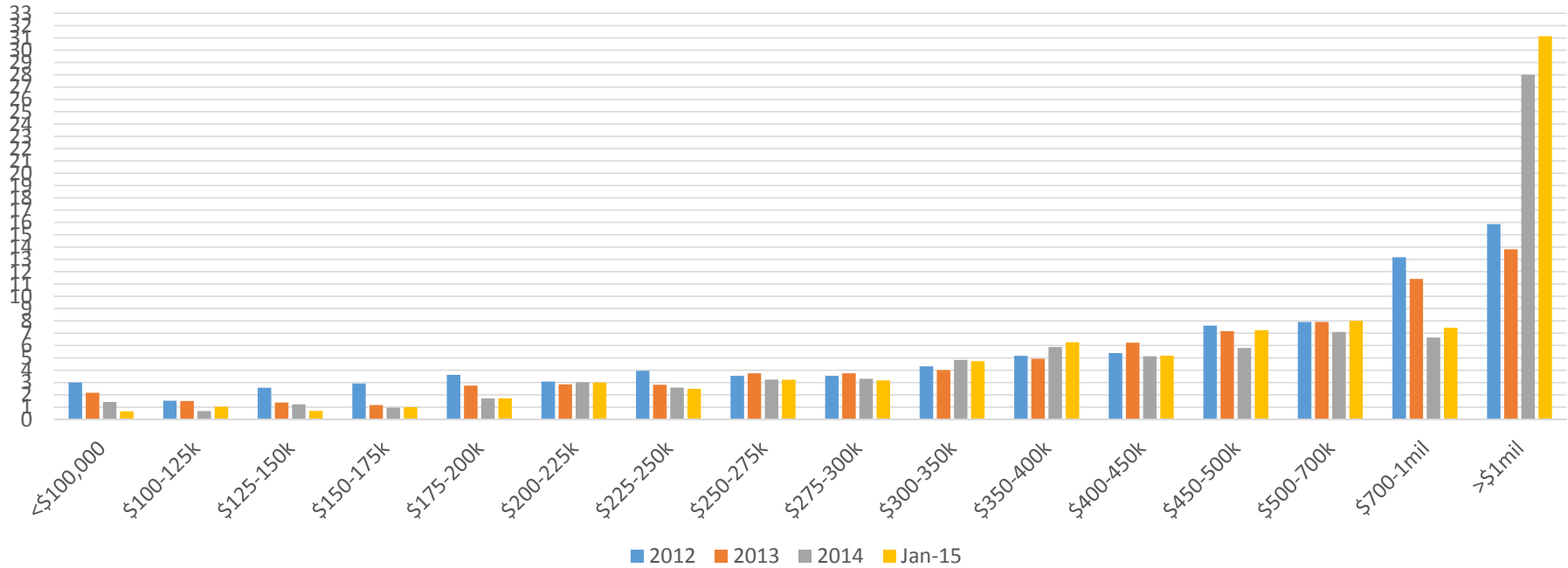


Over \$1,000,000



Absorption Rates

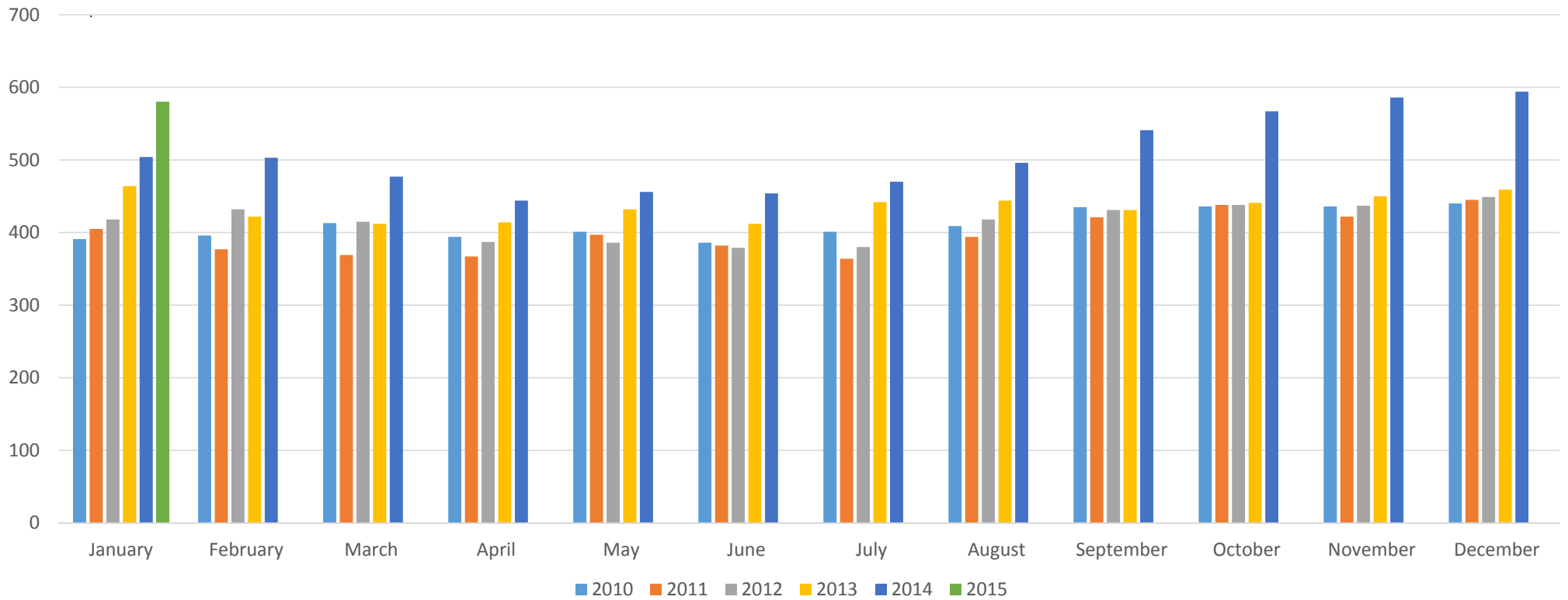
In Months



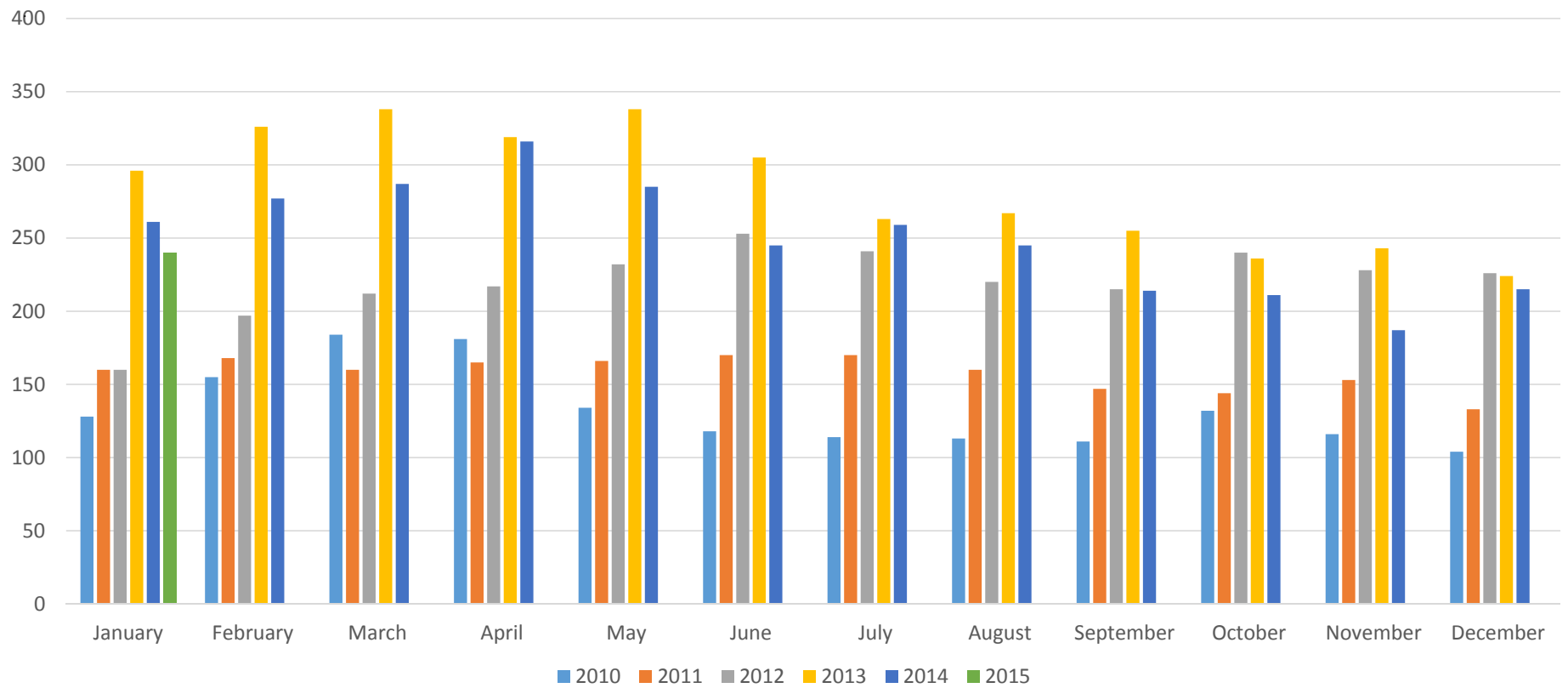
Current New Home Inventory
vs.
New Home Sales
January 2015

	Active Listings	Under Contract	Sold-YTD
<\$150,000	2	15	2
\$150-200	27	46	6
\$200-250	102	34	14
\$250-300	92	48	4
\$300-350	79	27	2
\$350-400	85	25	7
\$400-450	47	14	9
\$450-500	38	9	1
\$500-700	82	17	4
\$700-1 Mil	18	4	1
> 1 Mil	8	1	0
<hr/>			
Total	580	240	50

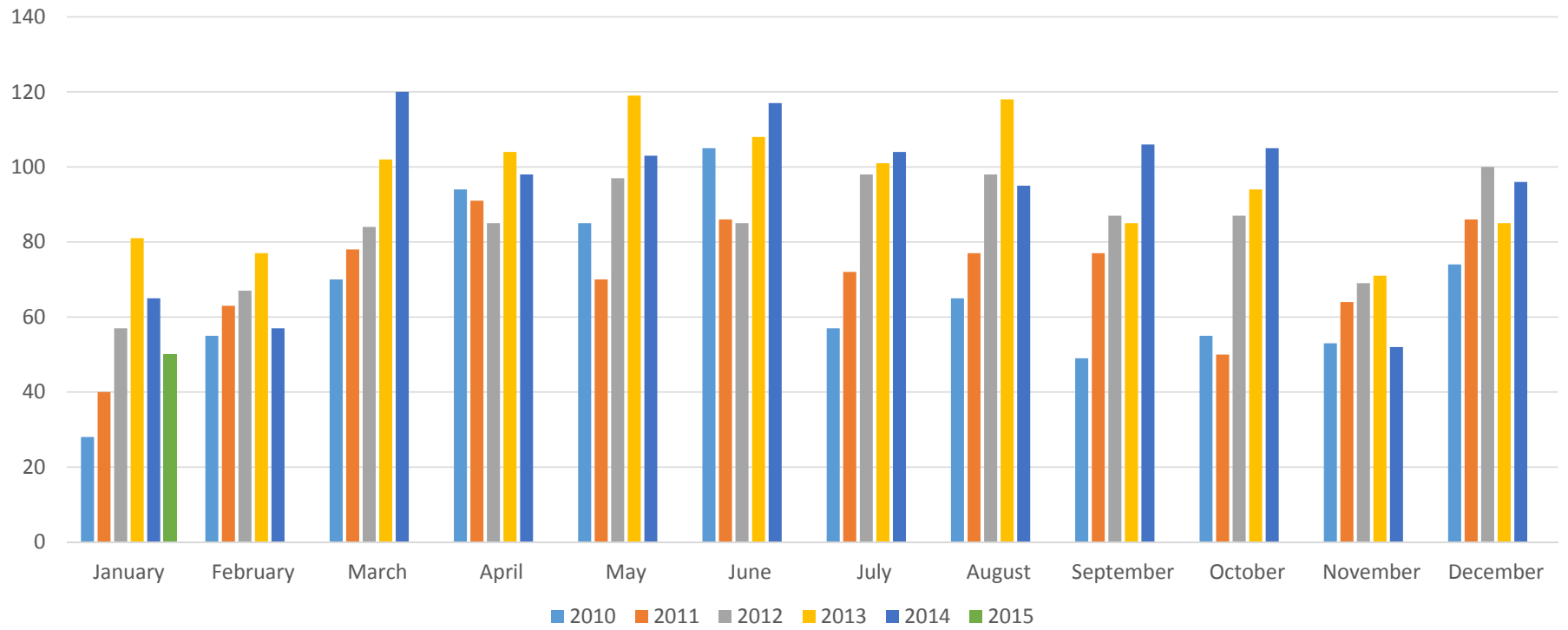
New Homes Active



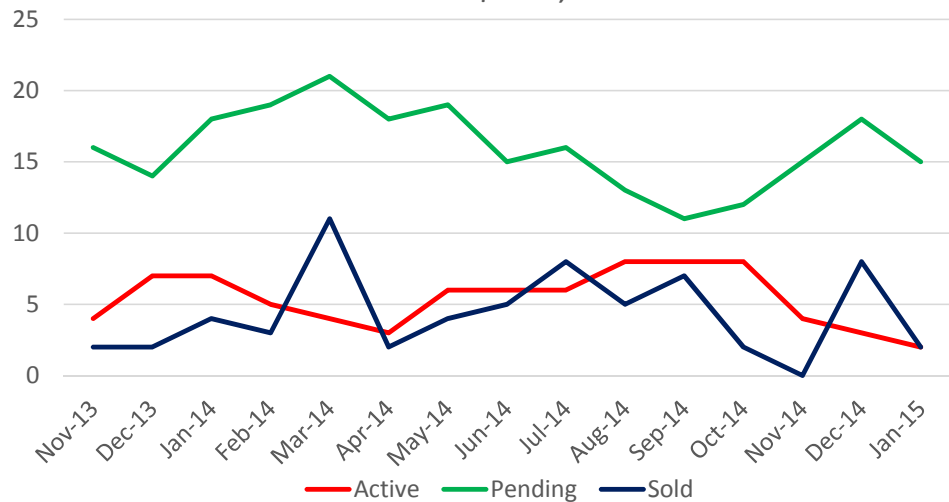
New Homes Under Contract



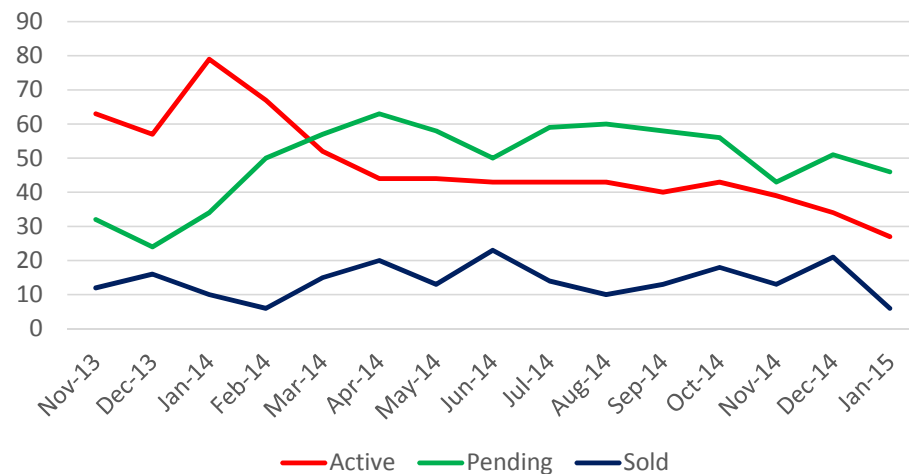
New Homes Sold



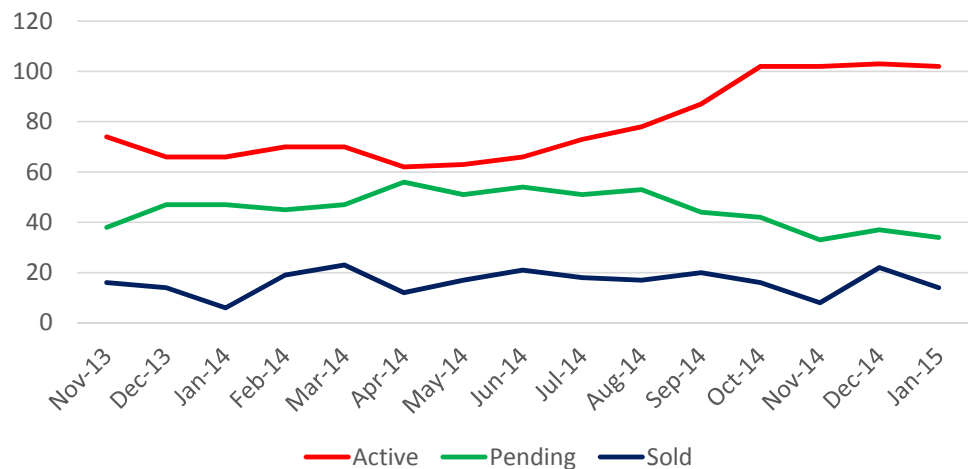
Under \$150,000



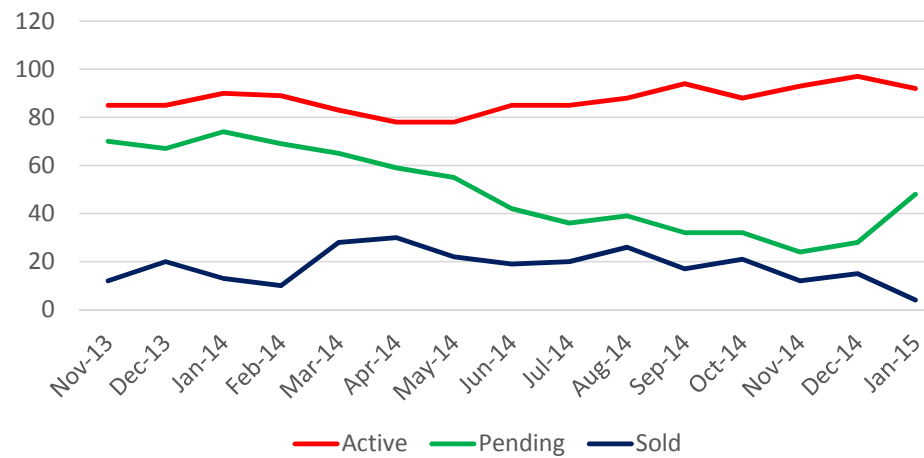
\$150,000-\$200,000



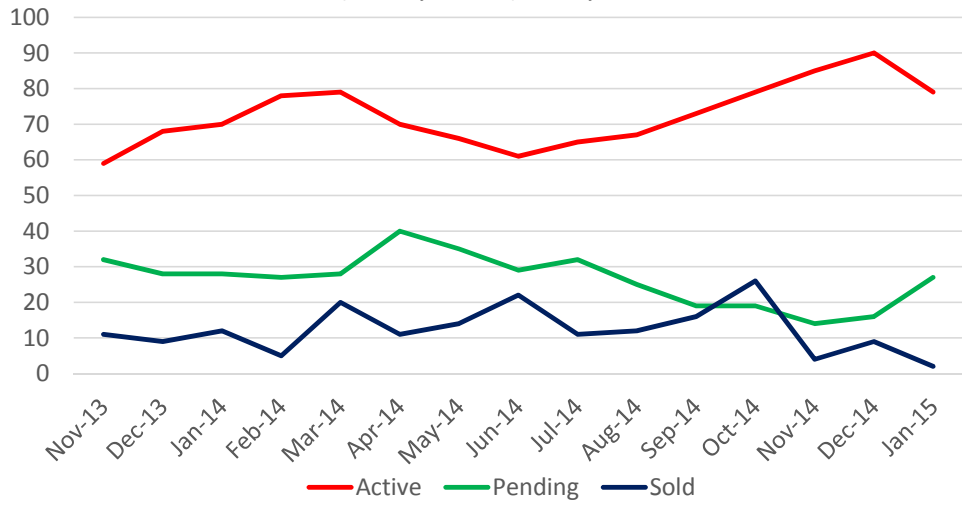
\$200,000-\$250,000



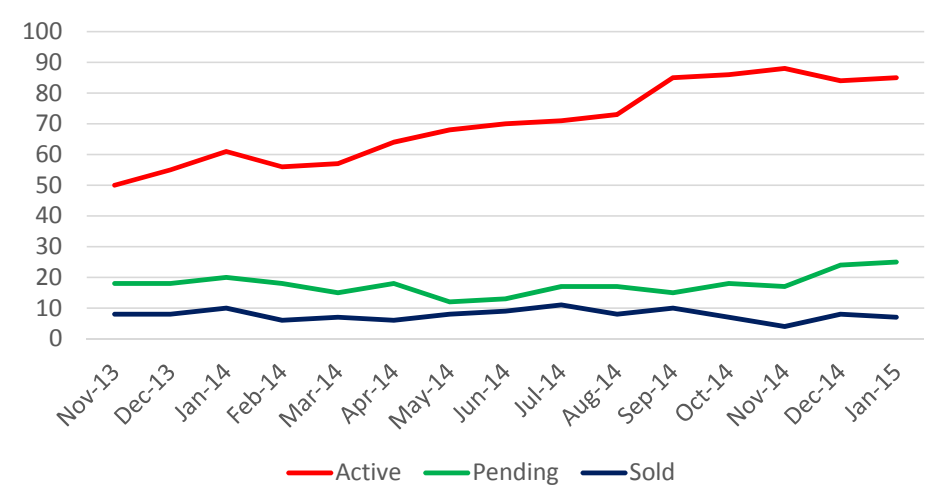
\$250,000-\$300,000



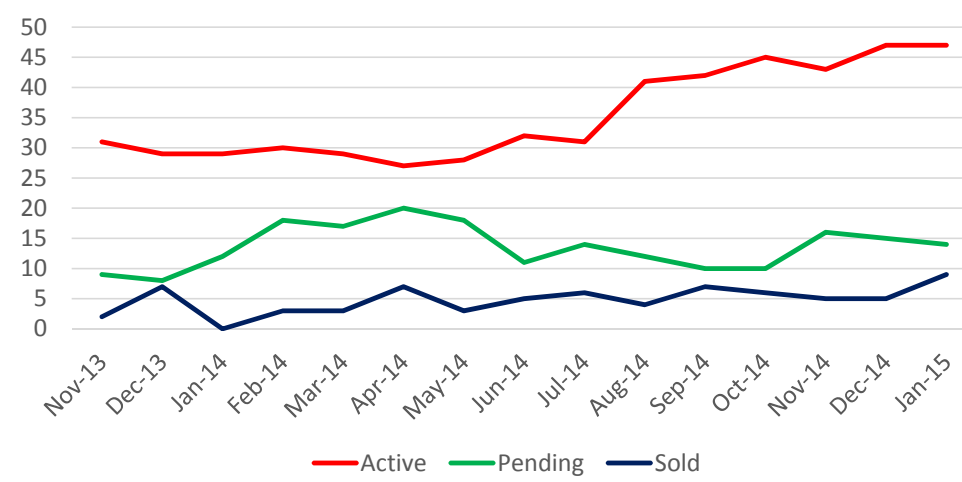
\$300,000-\$350,000



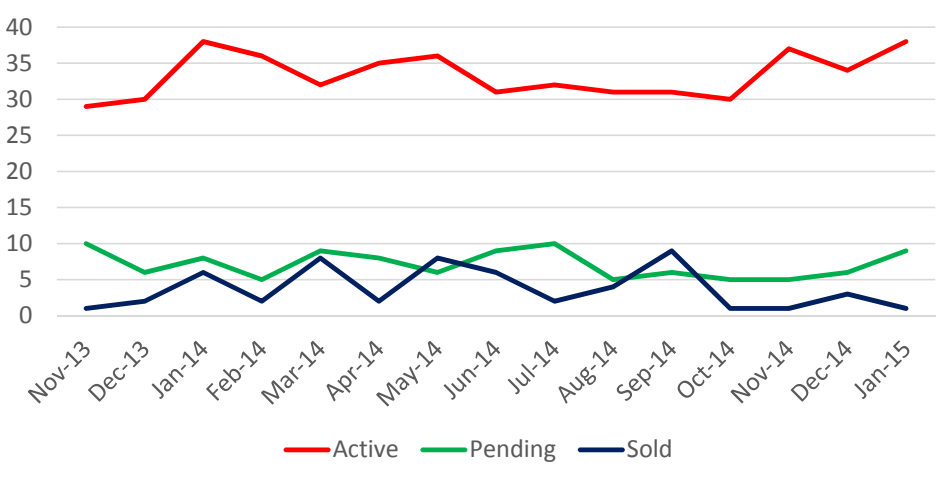
\$350,000-\$400,000



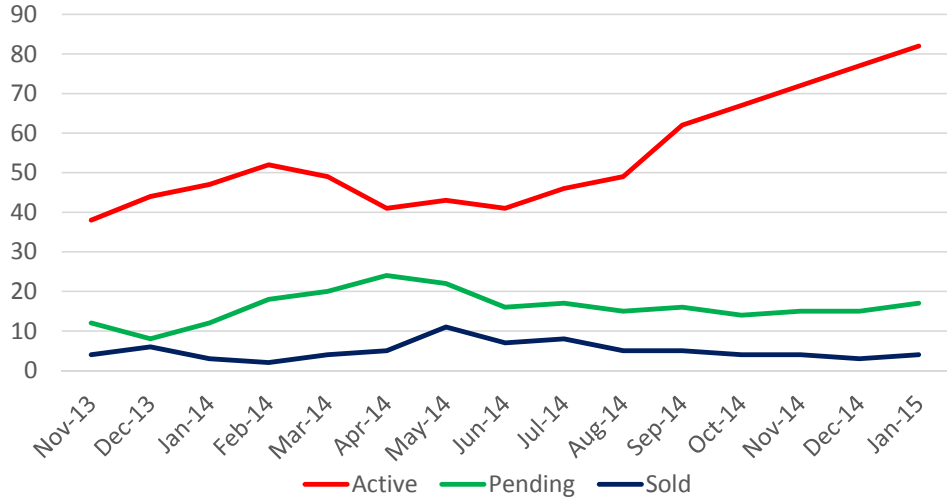
\$400,000-\$450,000



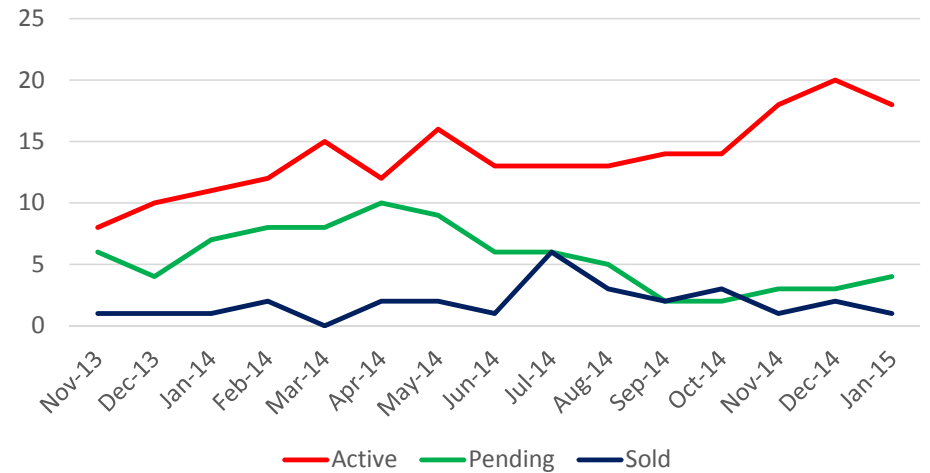
\$450,000-\$500,000



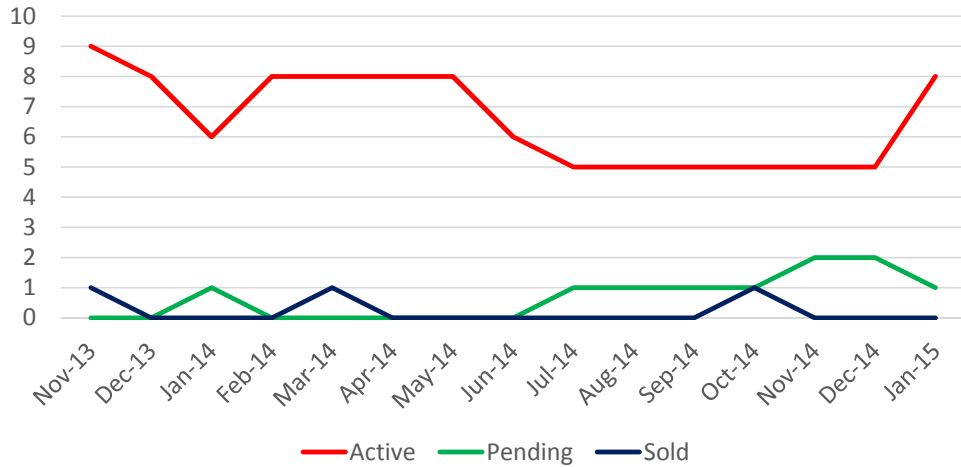
\$500,000-\$700,000



\$700,000-\$1,000,000



Over \$1,000,000



Absorption Rate New Homes

in months

