



# Preston Report

Edmond Real Estate Market  
September 2015

Prepared by

**Brian Preston**

RE/MAX Associates

Mobile: 405-826-5725 Office: 405-359-8700

[bpreston88@sbcglobal.net](mailto:bpreston88@sbcglobal.net)

[www.Edmond4Sale.com](http://www.Edmond4Sale.com)



Realtor of the Year 1995 & 2002  
Lifetime Achievement 2009  
Most Cooperative Realtor 1992  
RE/MAX Hall of Fame

# Edmond Real Estate

## 2015 Residential Homes

	Active	Pending	Sold
January	1165	638	207
February	1137	644	262
March	1185	753	339
April	1258	763	377
May	1323	742	411
June	1377	671	479
July	1324	679	463
August	1416	649	435
September	1449	565	396
October			
November			
December			
		Total	3369

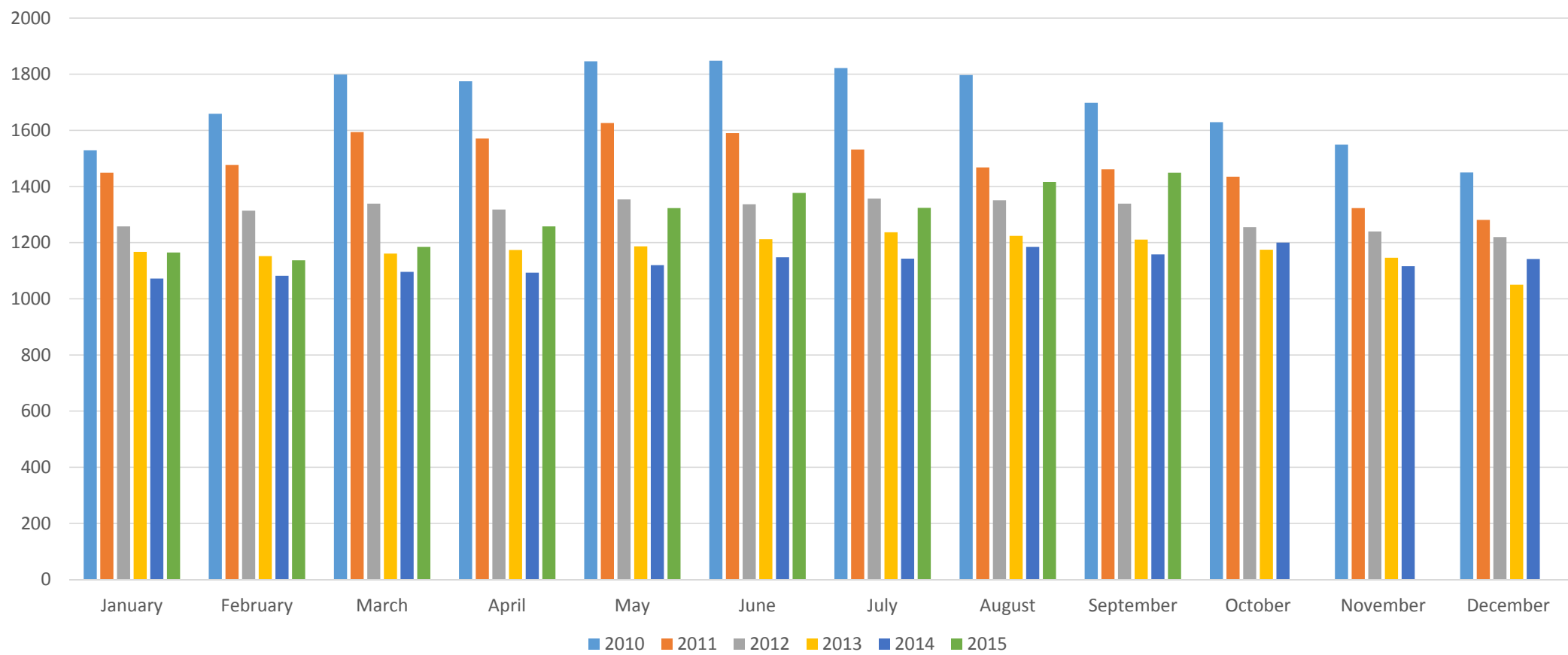
Preston Report

Based on information from MLSOK.com for the period (01/01/15) through (09/30/15) Edmond, Deer Creek and Oakdale School Districts, while information is deemed reliable it is not guaranteed

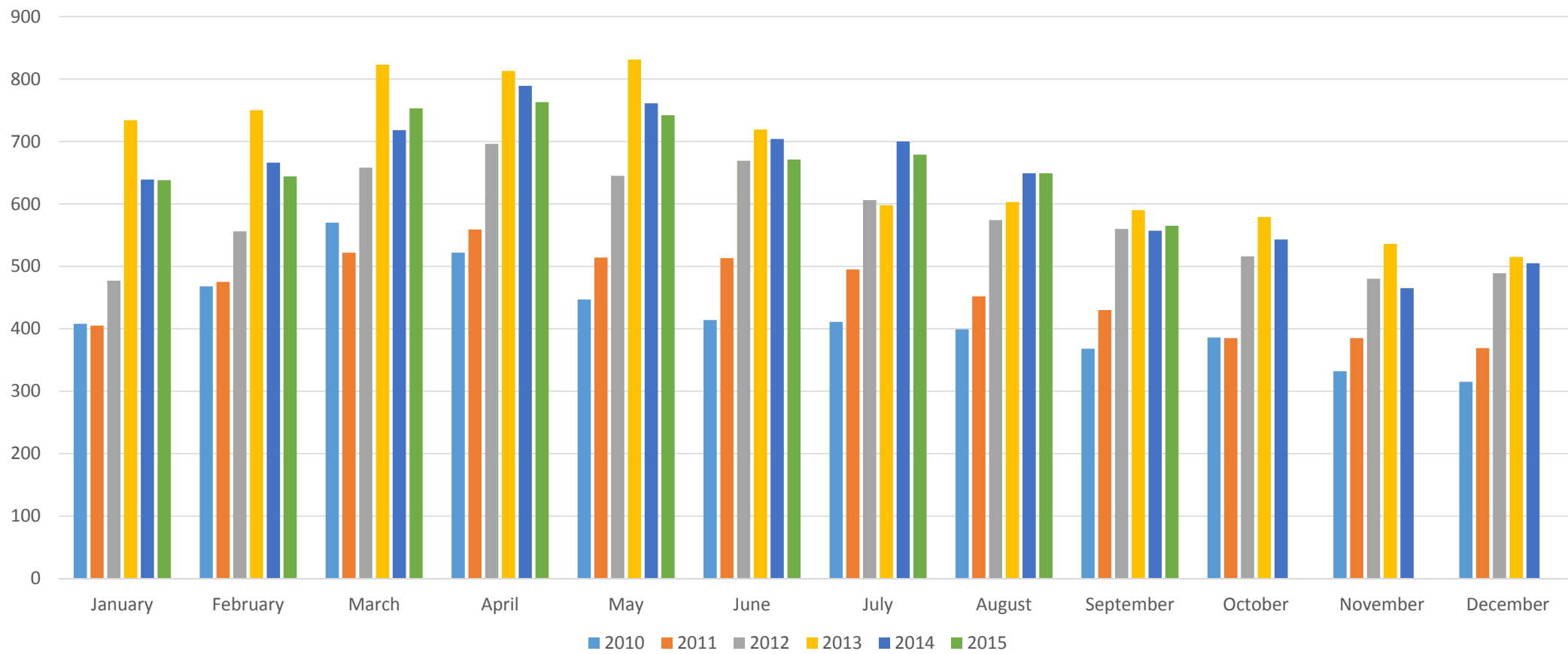
# Average Sales Price

	Average Price	Total Volume	Avg Price New Home	Total Volume New Homes
Jan.	\$290,319	\$60,096,033	\$338,937	\$17,624,724
Feb.	\$271,313	\$71,084,006	\$297,380	\$24,087,780
March	\$262,041	\$88,831,899	\$335,963	\$32,588,411
April	\$286,742	\$108,101,734	\$342,265	\$38,333,680
May	\$287,601	\$118,204,011	\$339,621	\$34,301,721
June	\$296,043	\$141,804,597	\$319,881	\$35,186,910
July	\$290,835	\$134,656,605	\$322,749	\$37,438,884
August	\$280,096	\$121,841,760	\$347,182	\$35,412,564
Sept.	\$294,450	\$116,602,200	\$342,200	\$32,851,200
Oct.				
Nov.				
Dec.				
Total	\$285,314	\$961,222,845	\$331,979	\$287,825,874

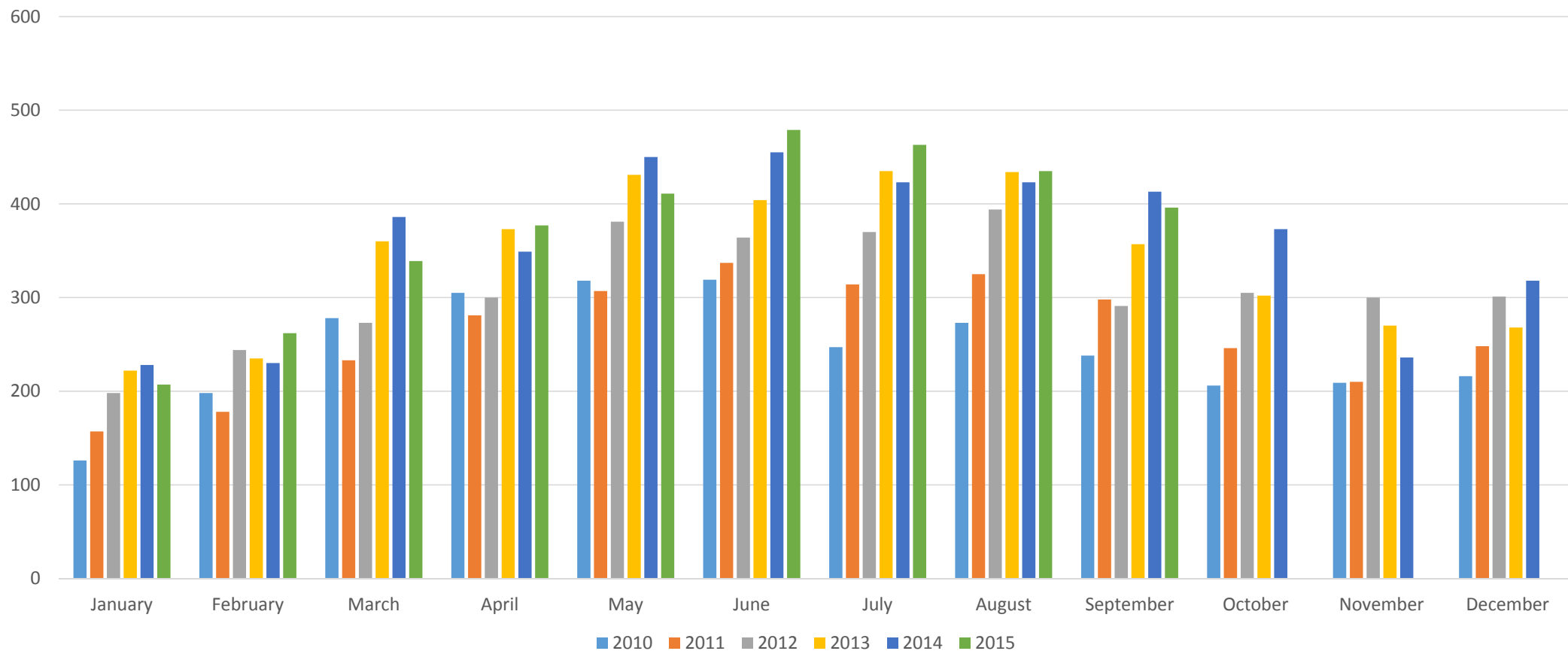
# Active Listings



# Under Contract



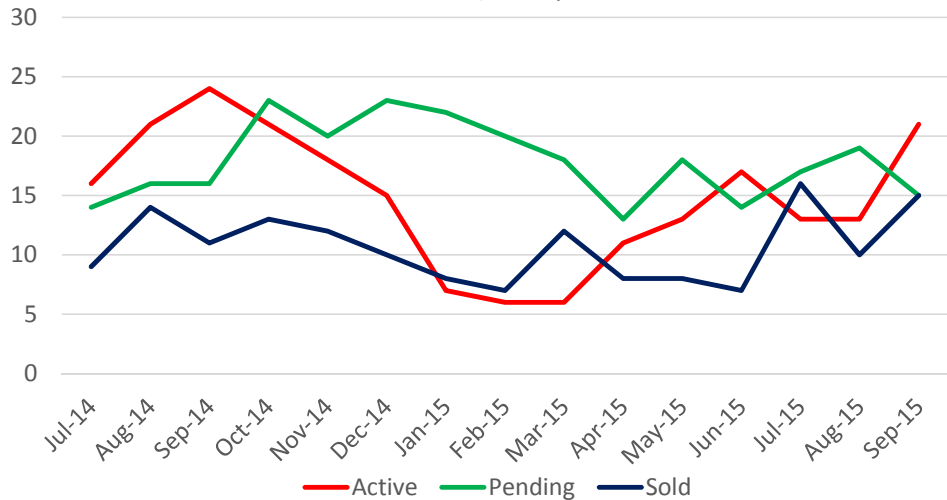
# Sold



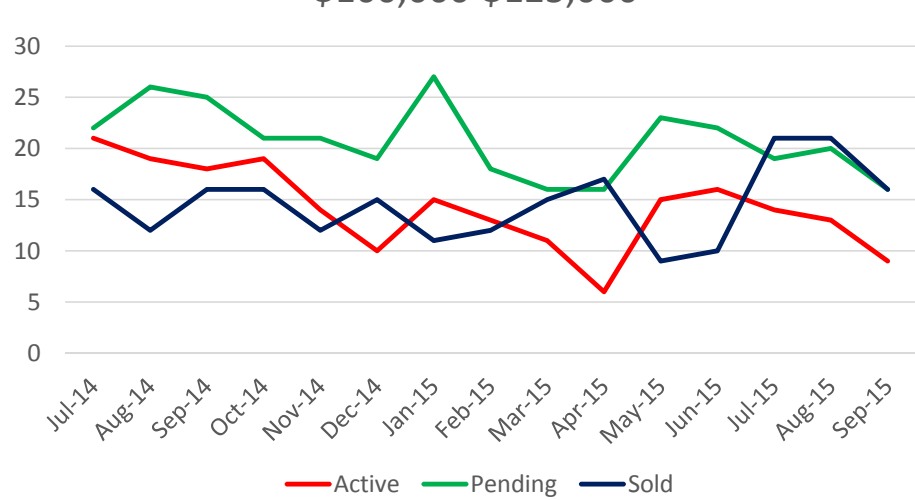
# Current Inventory vs. Homes Sold Edmond – September 2015

	Active	Pending	Sold YTD
<\$100,000	21	15	91
\$100-125k	9	16	132
\$125-150k	34	47	281
\$150-175k	59	59	350
\$175-200k	129	53	377
\$200-225k	108	56	305
\$225-250k	104	52	257
\$250-275k	95	37	213
\$275-300k	131	48	236
\$300-350k	156	50	350
\$350-400k	134	38	233
\$400-450K	101	27	174
\$450-500k	81	16	106
\$500-700k	146	31	170
\$700-1 mil	75	13	63
>\$1 million	66	7	31
Total	1449	565	3369

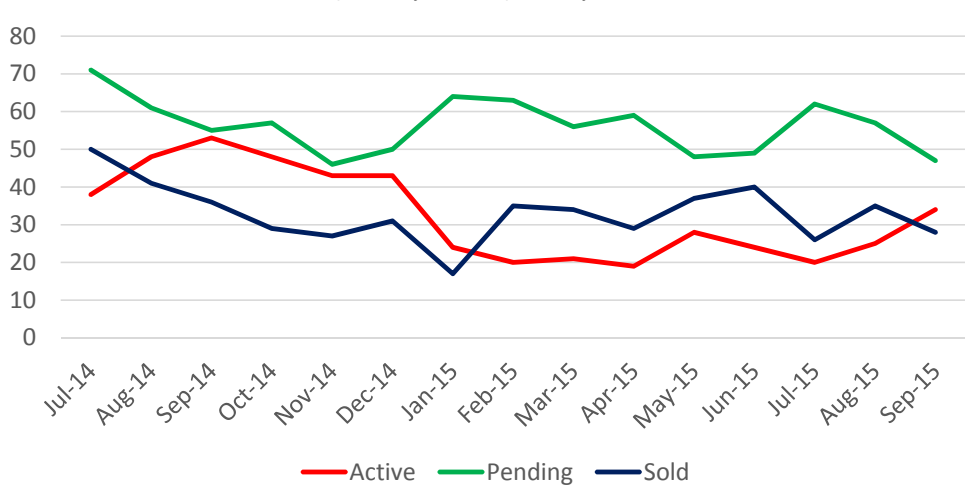
Under \$100,000



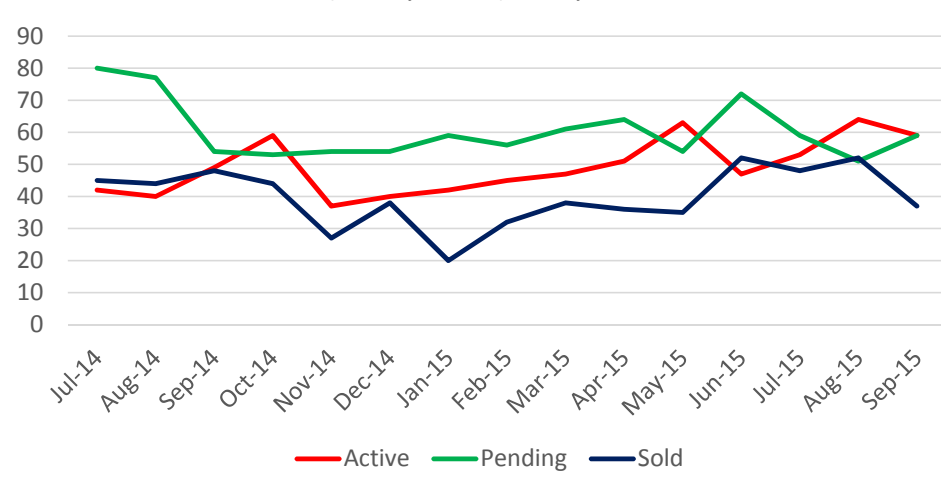
\$100,000-\$125,000



\$125,000-\$150,000

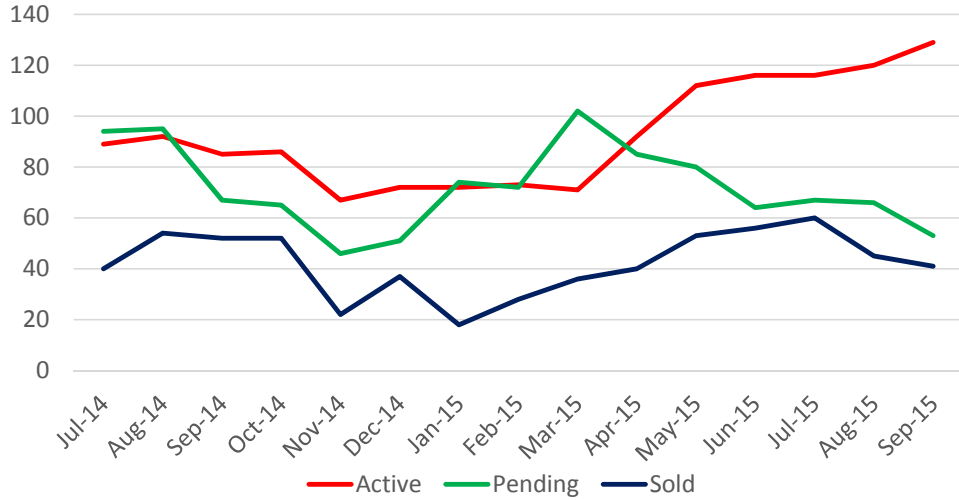


\$150,000-\$175,000

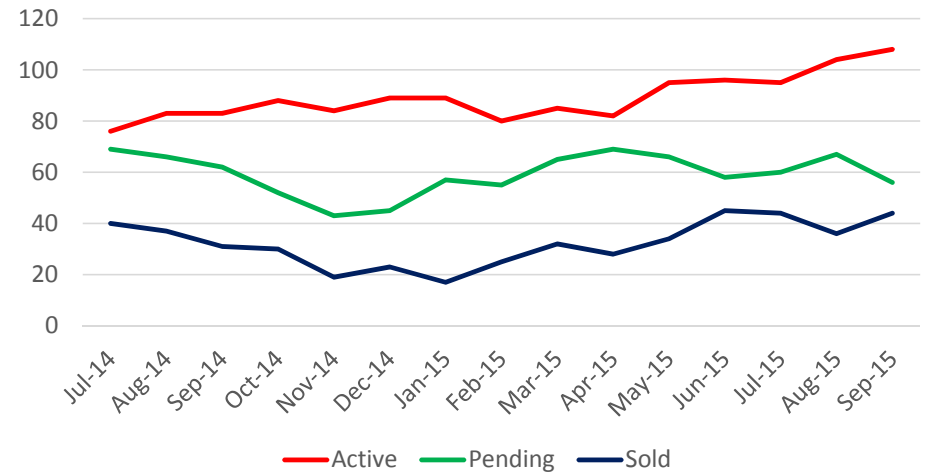




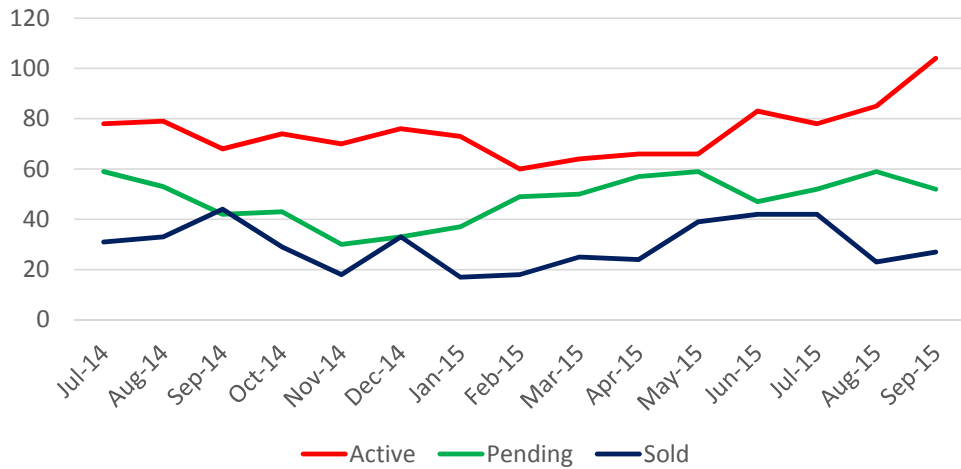
\$175,000-\$200,000



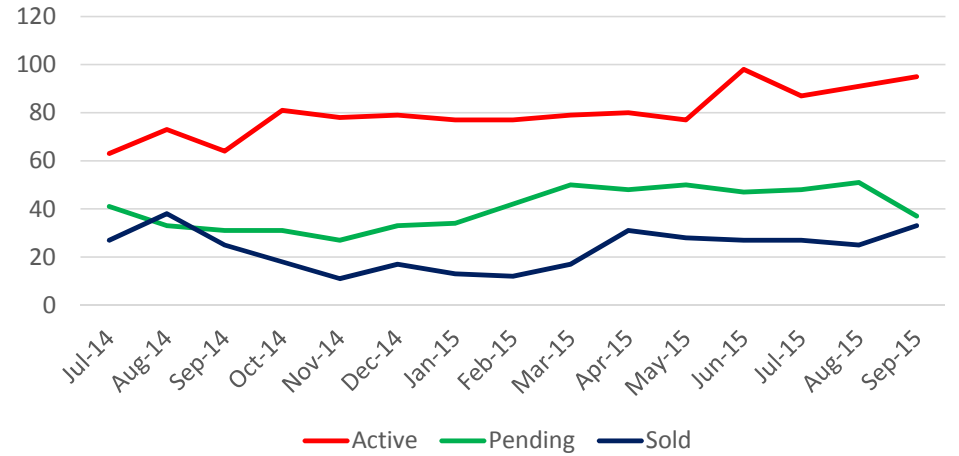
\$200,000-\$225,000



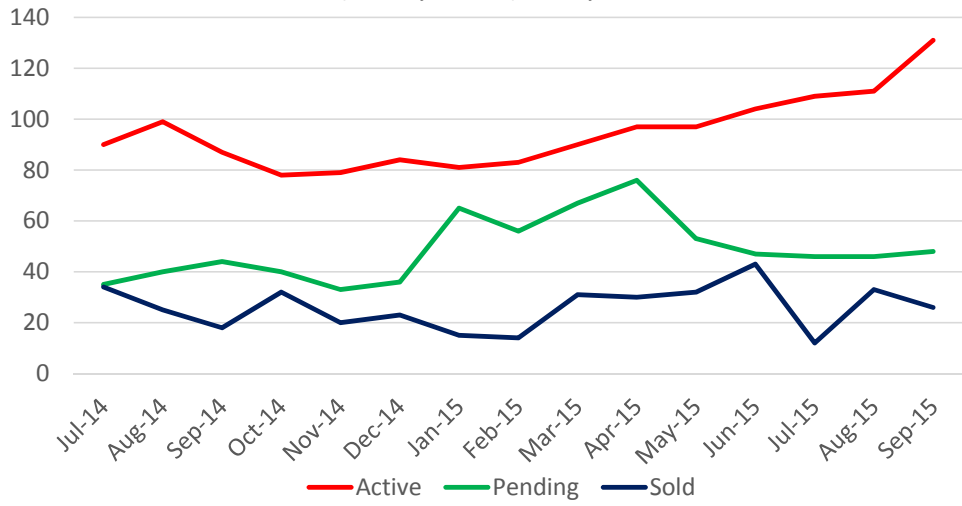
\$225,000-\$250,000



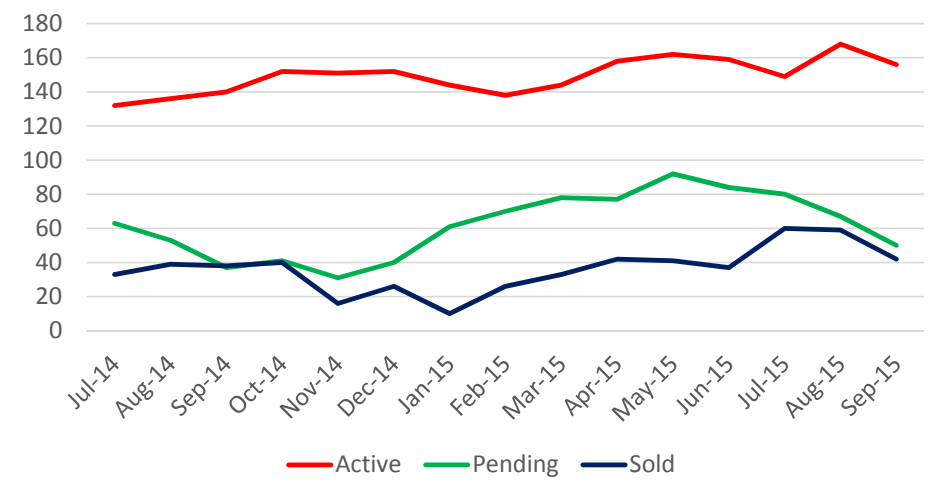
\$250,000-\$275,000



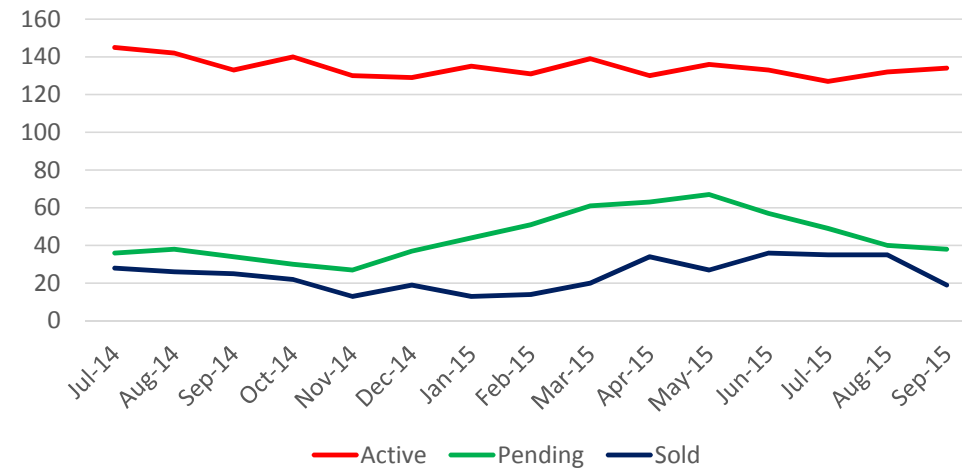
\$275,000-\$300,000



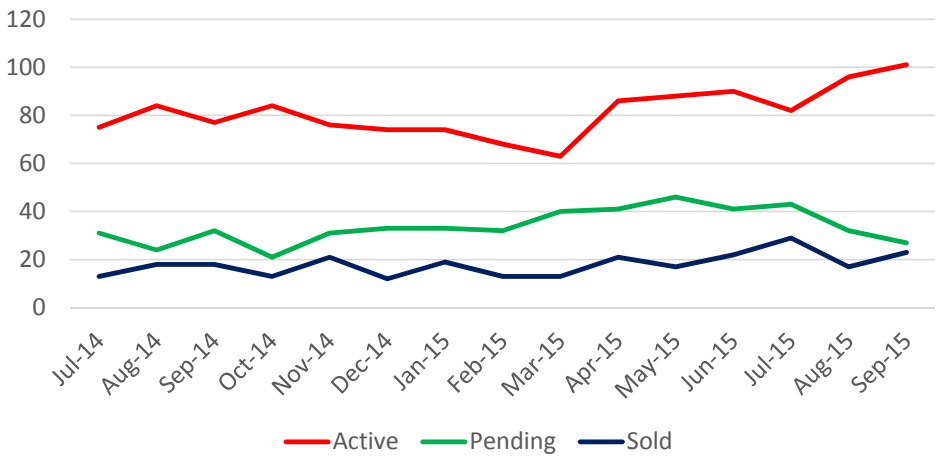
\$300,000-\$350,000



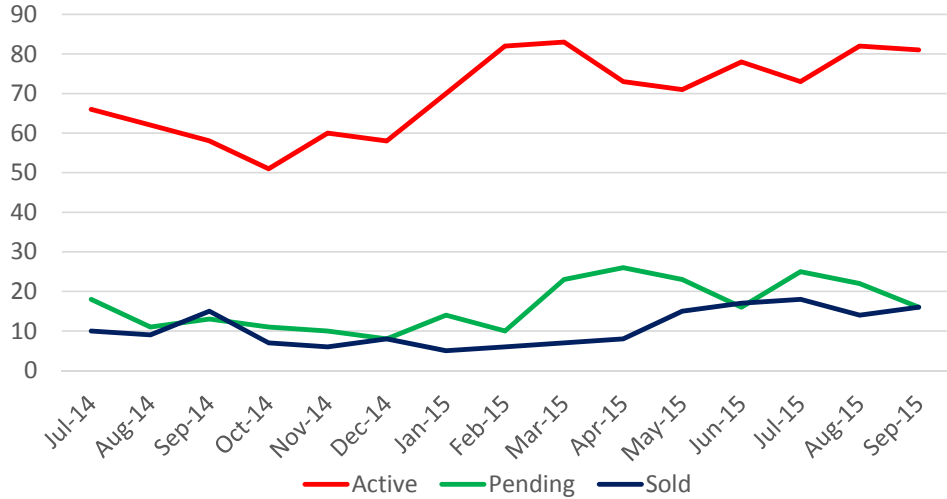
\$350,000-\$400,000



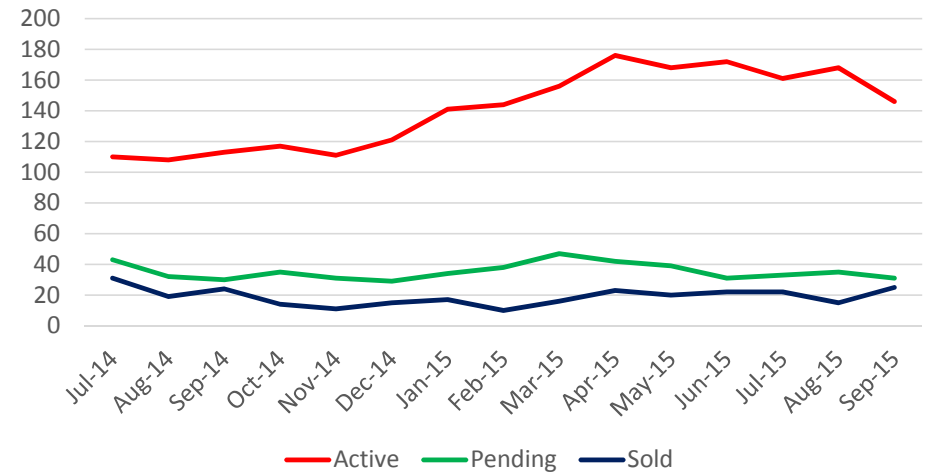
\$400,000-\$450,000



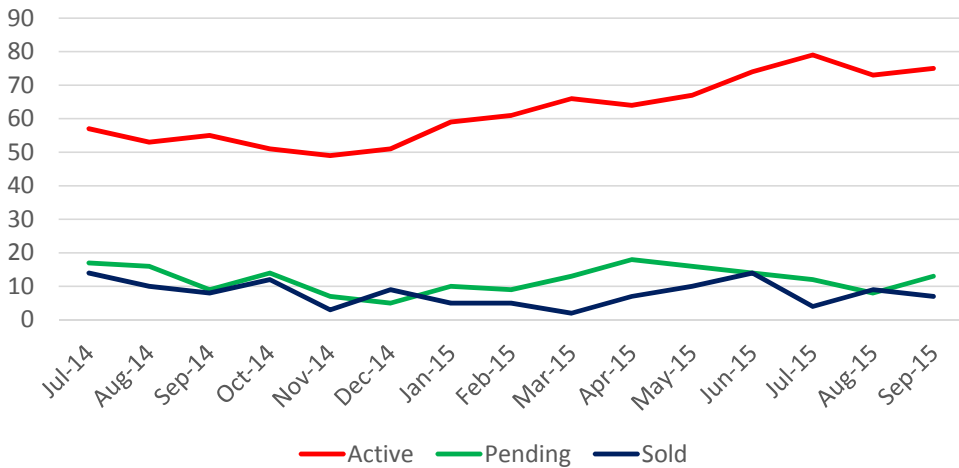
\$450,000-\$500,000



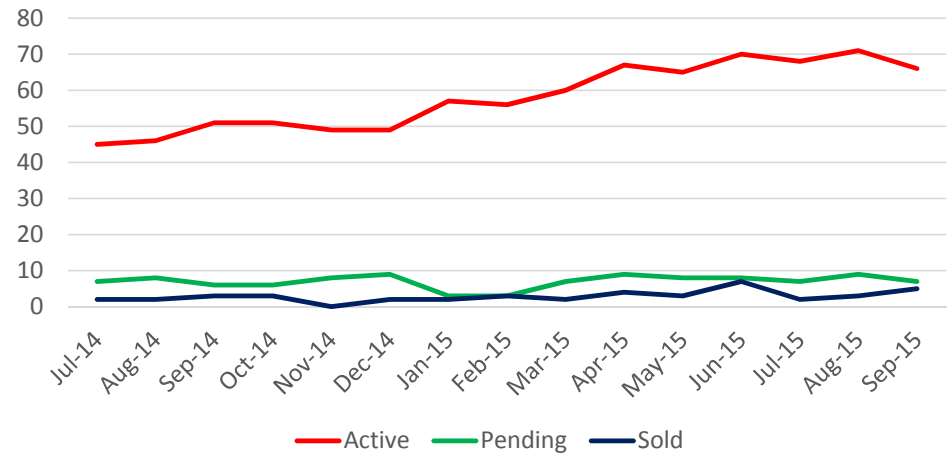
\$500,000-\$700,000



\$700,000-\$1,000,000

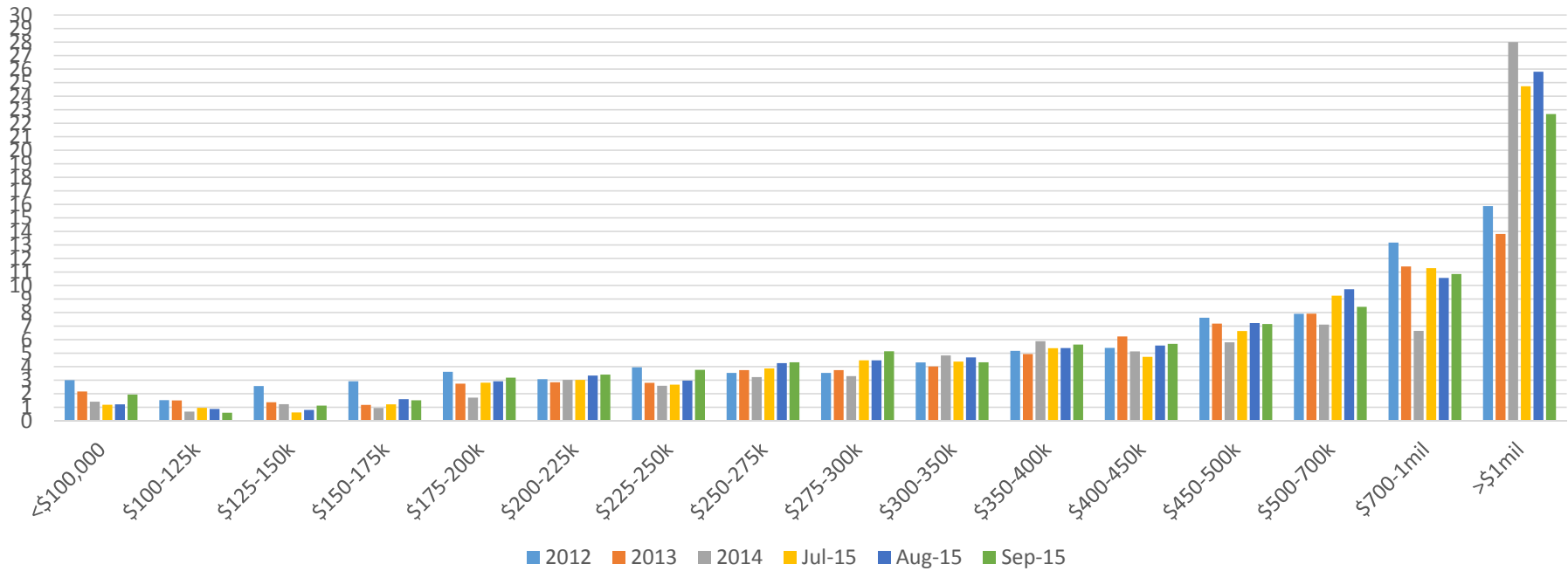


Over \$1,000,000



# Absorption Rates

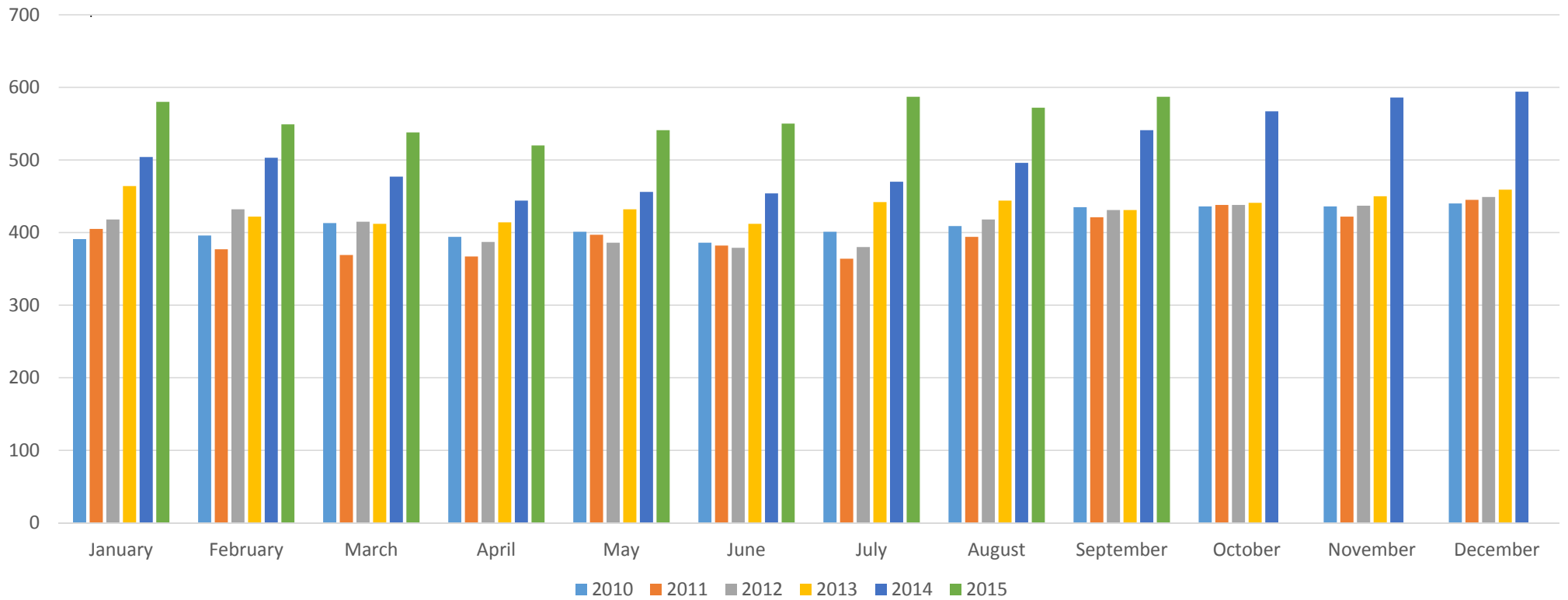
In Months



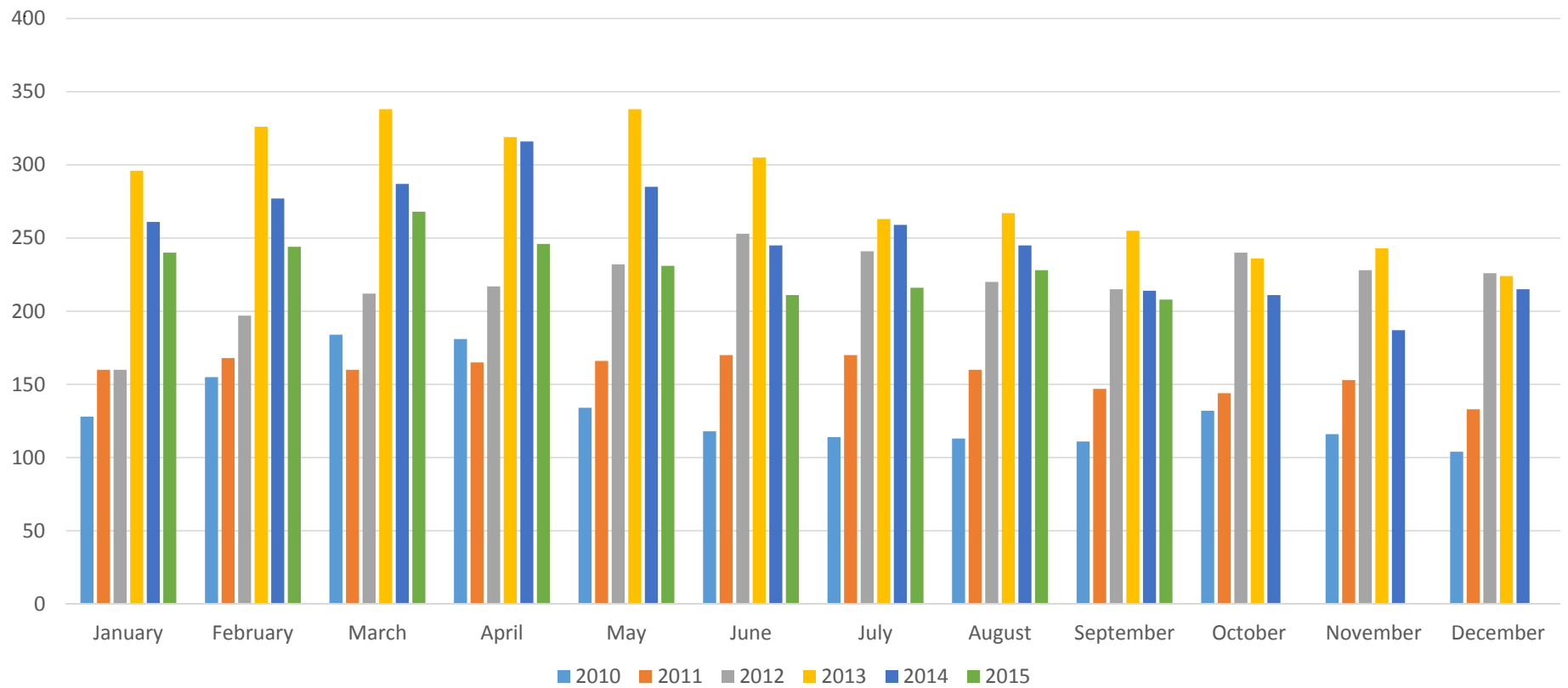
Current New Home Inventory  
vs.  
New Home Sales  
September 2015

	Active Listings	Under Contract	Sold-YTD
<\$150,000	1	5	26
\$150-200	55	29	118
\$200-250	99	53	155
\$250-300	104	37	141
\$300-350	74	18	124
\$350-400	79	24	103
\$400-450	49	17	61
\$450-500	32	8	42
\$500-700	66	12	77
\$700-1 Mil	20	4	17
> 1 Mil	8	1	3
<hr/>			
Total	587	208	867

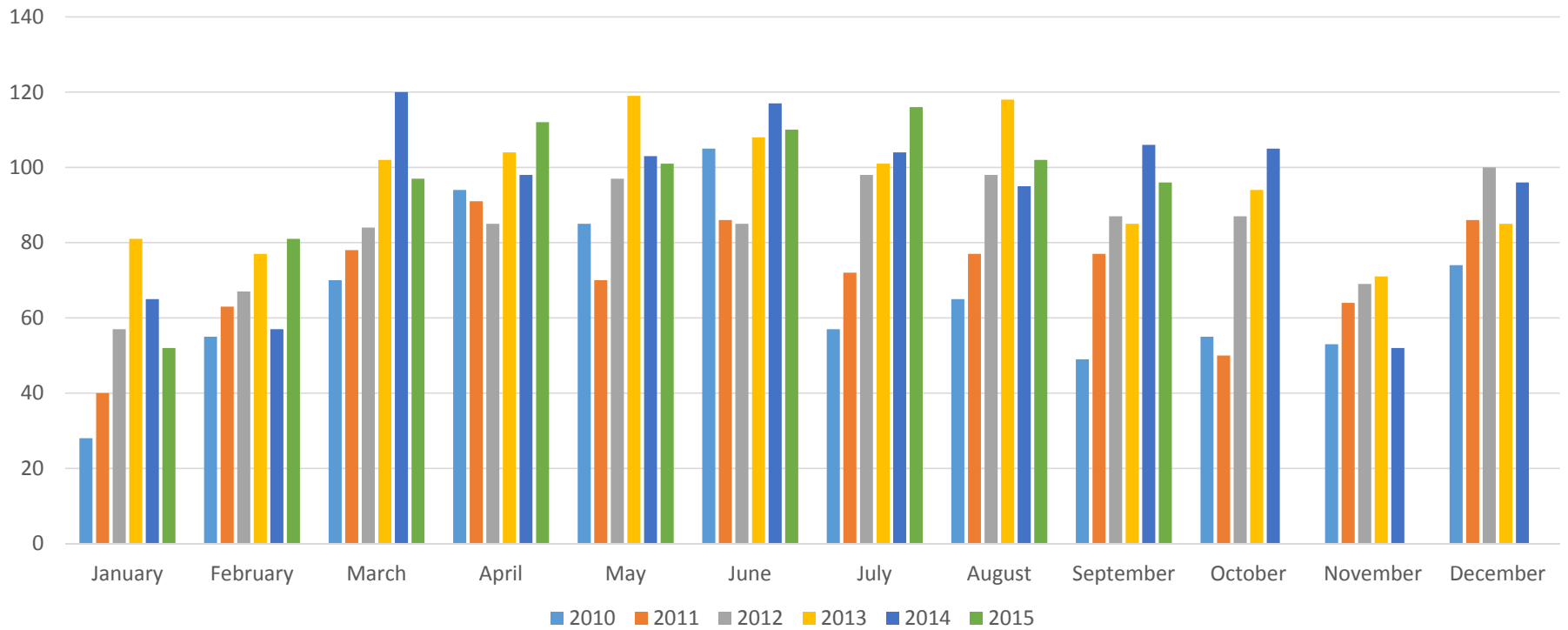
# New Homes Active



# New Homes Under Contract

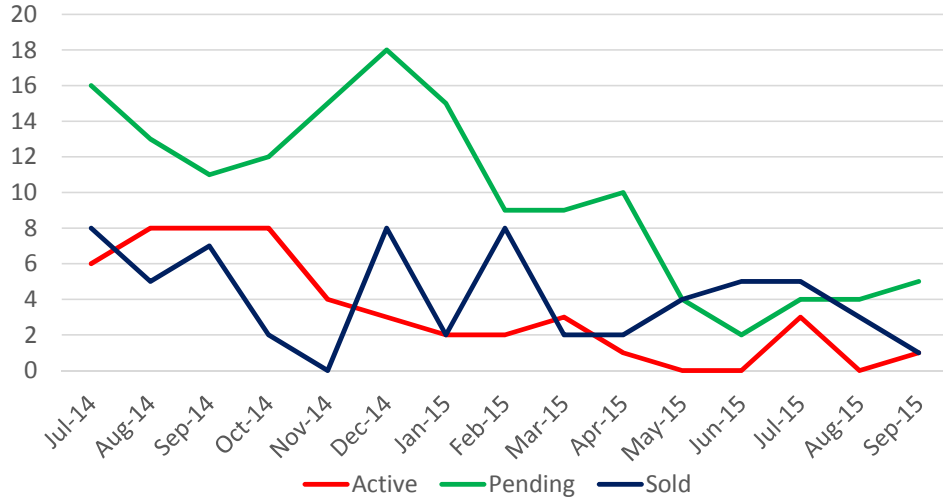


# New Homes Sold

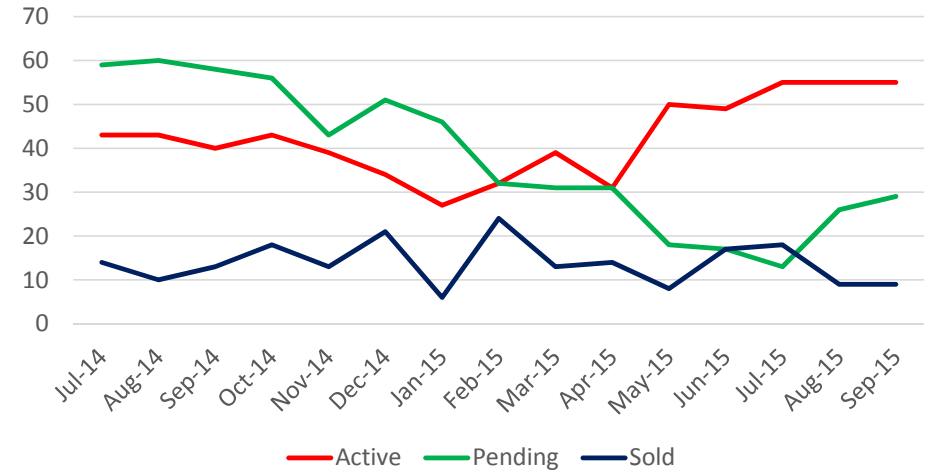




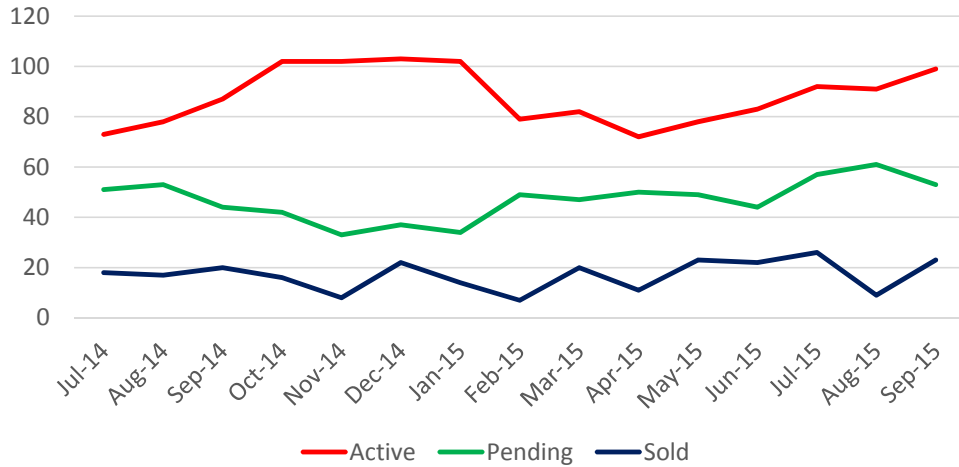
Under \$150,000



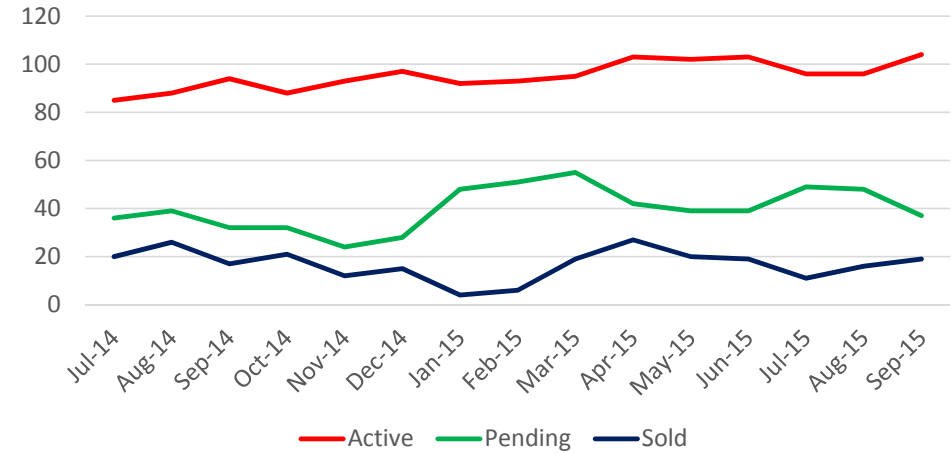
\$150,000-\$200,000



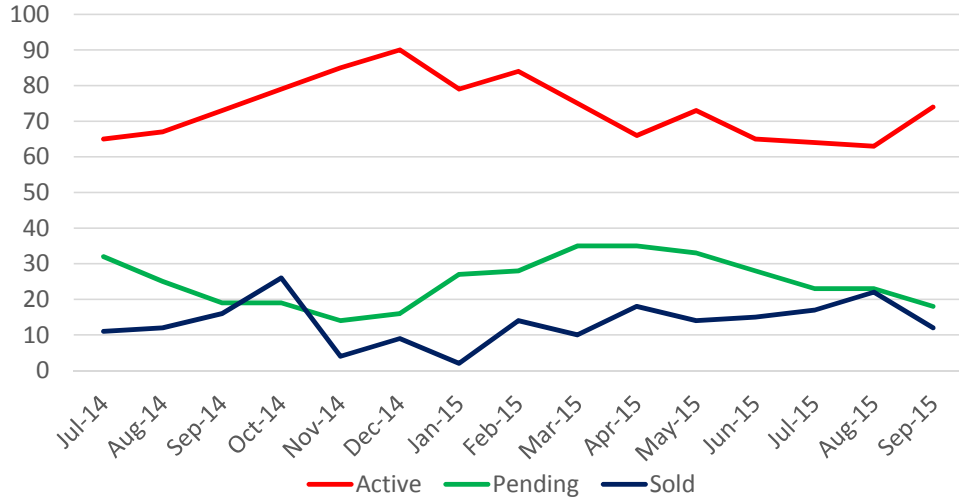
\$200,000-\$250,000



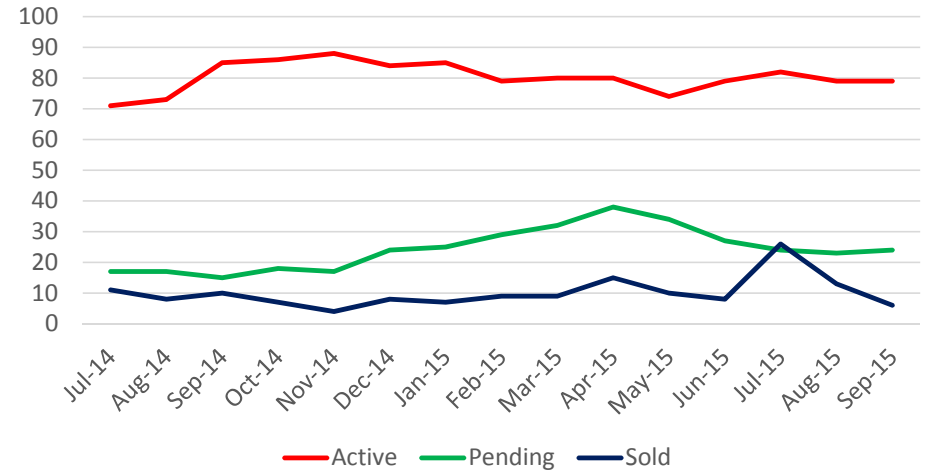
\$250,000-\$300,000



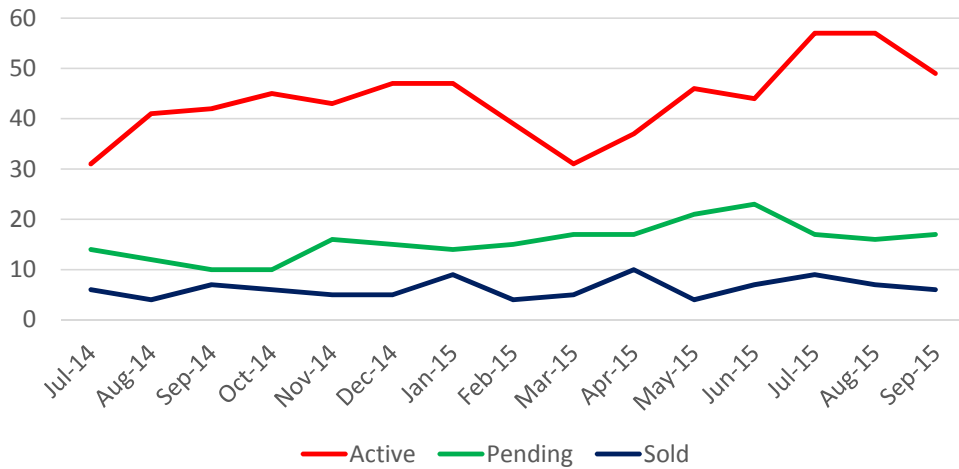
\$300,000-\$350,000



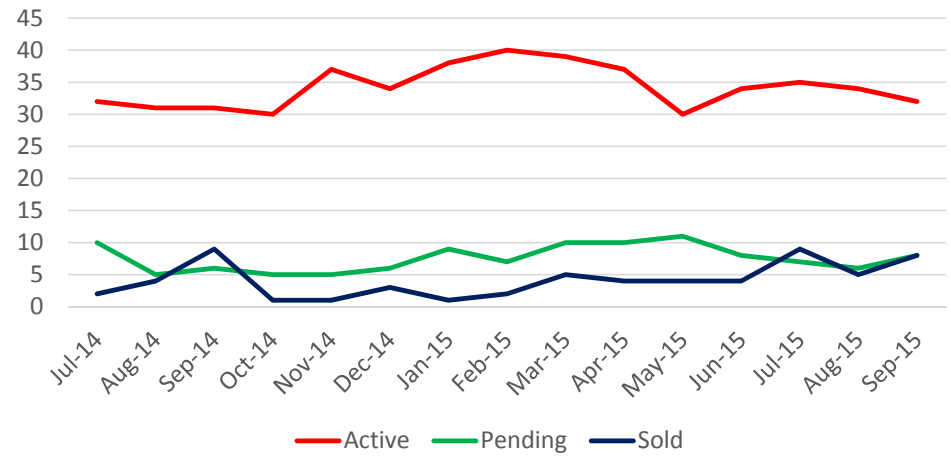
\$350,000-\$400,000



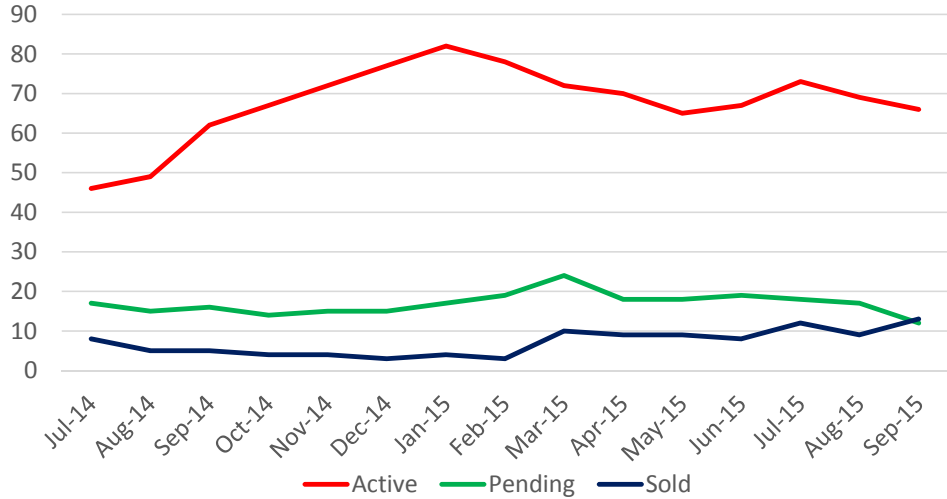
\$400,000-\$450,000



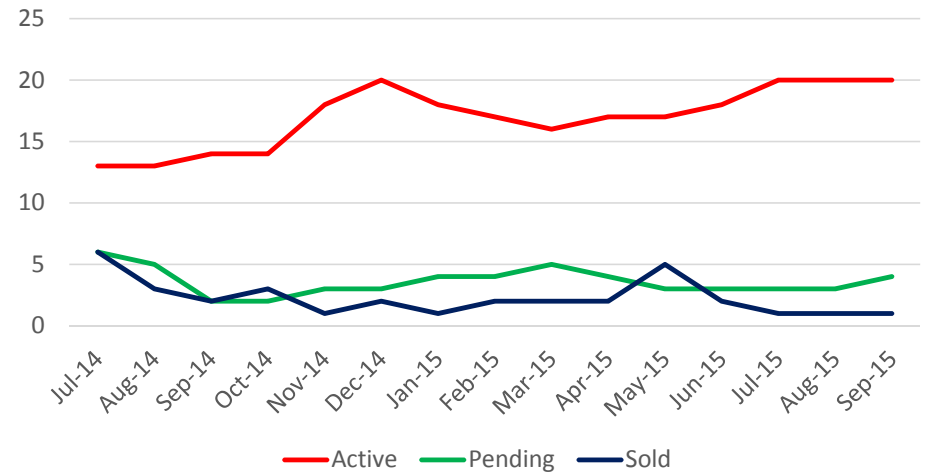
\$450,000-\$500,000



### \$500,000-\$700,000



### \$700,000-\$1,000,000



### Over \$1,000,000

