



Preston Report

Edmond Real Estate Market July 2015

Prepared by

Brian Preston

RE/MAX Associates



Mobile: 405-826-5725 Office: 405-359-8700

bpreston88@sbcglobal.net

www.Edmond4Sale.com

Realtor of the Year 1995 & 2002
Lifetime Achievement 2009
Most Cooperative Realtor 1992
RE/MAX Hall of Fame

Edmond Real Estate

2015 Residential Homes

	Active	Pending	Sold
January	1165	638	207
February	1137	644	262
March	1185	753	338
April	1258	763	377
May	1323	742	410
June	1377	671	479
July	1324	679	460
August			
September			
October			
November			
December			
		Total	2533

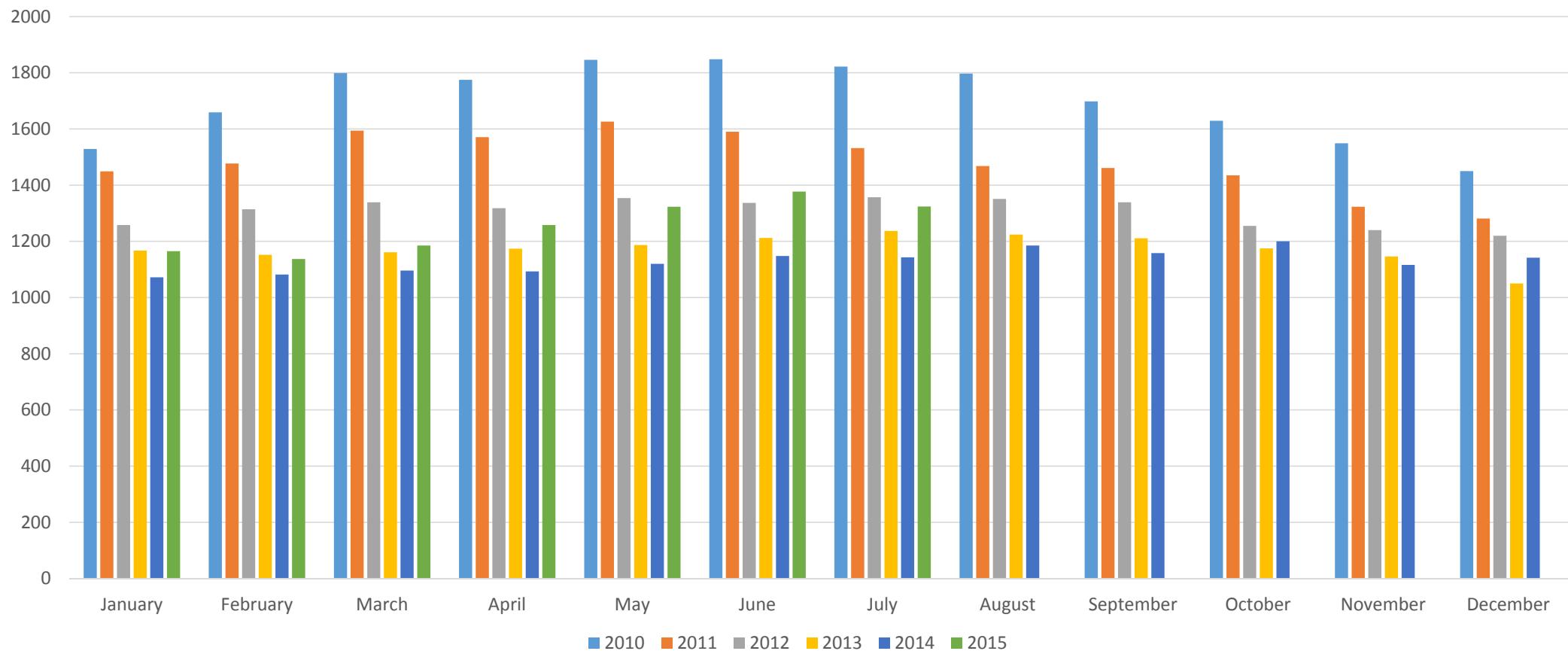
Preston Report

Based on information from MLSOK.com for the period (01/01/15) through (07/31/15) Edmond, Deer Creek and Oakdale School Districts, while information is deemed reliable it is not guaranteed

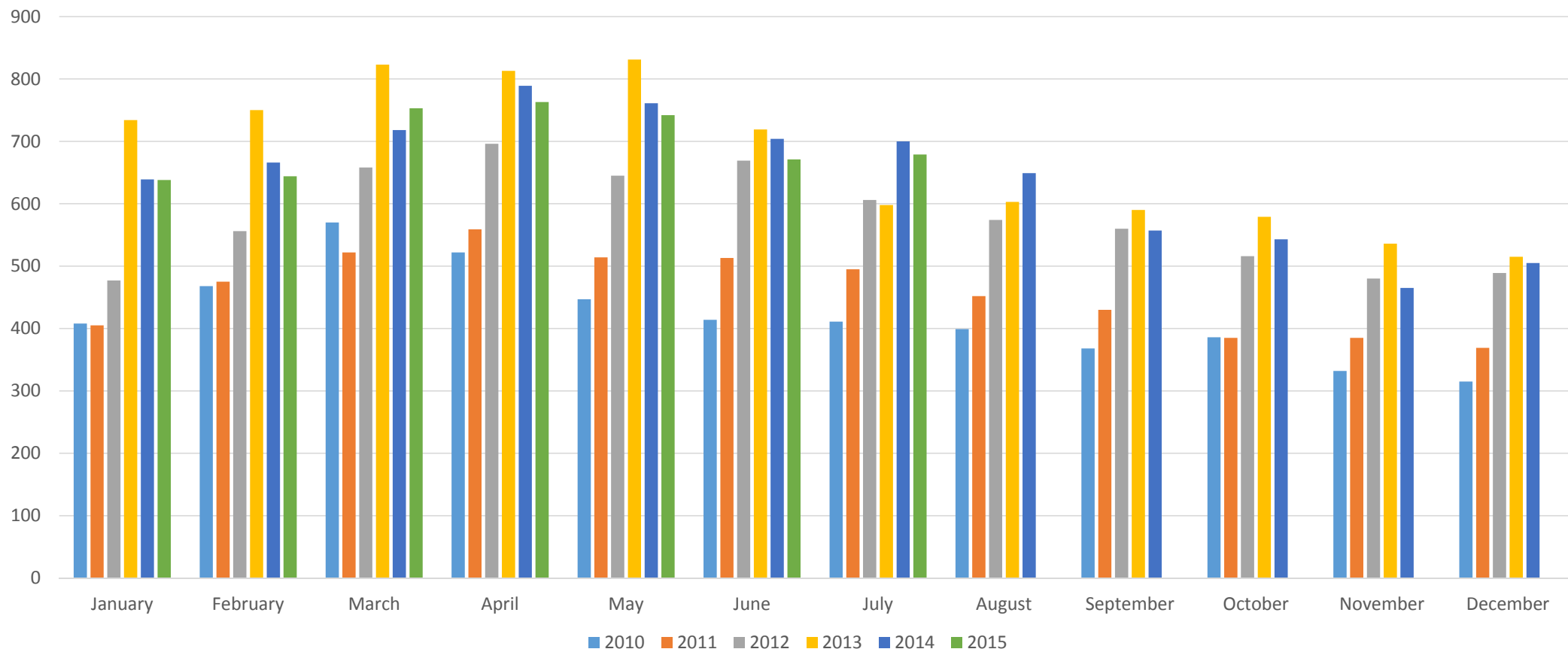
Average Sales Price

	Average Price	Total Volume	Avg Price New Home	Total Volume New Homes
Jan.	\$290,319	\$60,096,033	\$338,937	\$17,624,724
Feb.	\$271,313	\$71,084,006	\$297,380	\$24,087,780
March	\$262,187	\$88,619,206	\$337,246	\$32,375,616
April	\$286,742	\$108,101,734	\$342,265	\$38,333,680
May	\$287,853	\$118,019,730	\$339,621	\$34,301,721
June	\$295,834	\$141,704,486	\$319,881	\$35,186,910
July	\$291,466	\$134,074,360	\$323,718	\$37,227,570
August				
Sept.				
Oct.				
Nov.				
Dec.				
Total	\$284,919	\$721,699,555	\$328,542	\$219,138,001

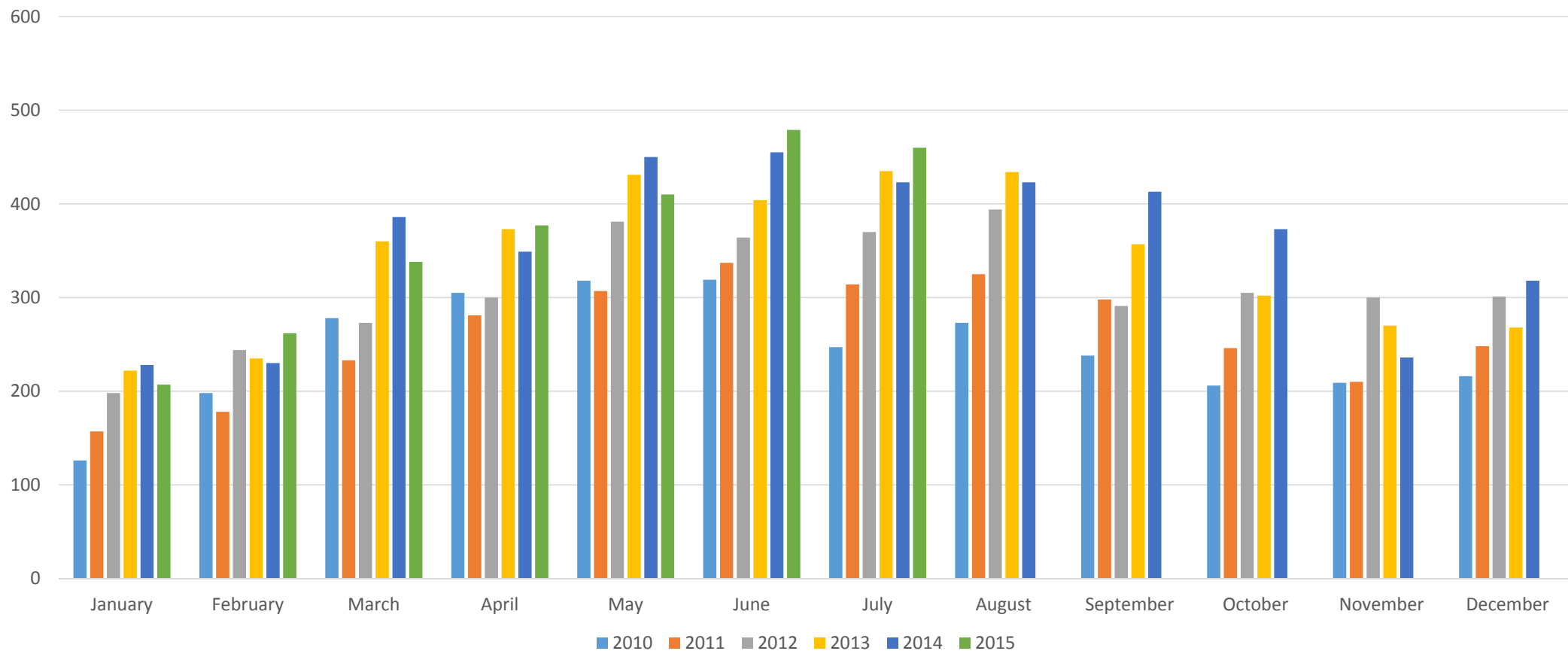
Active Listings



Under Contract



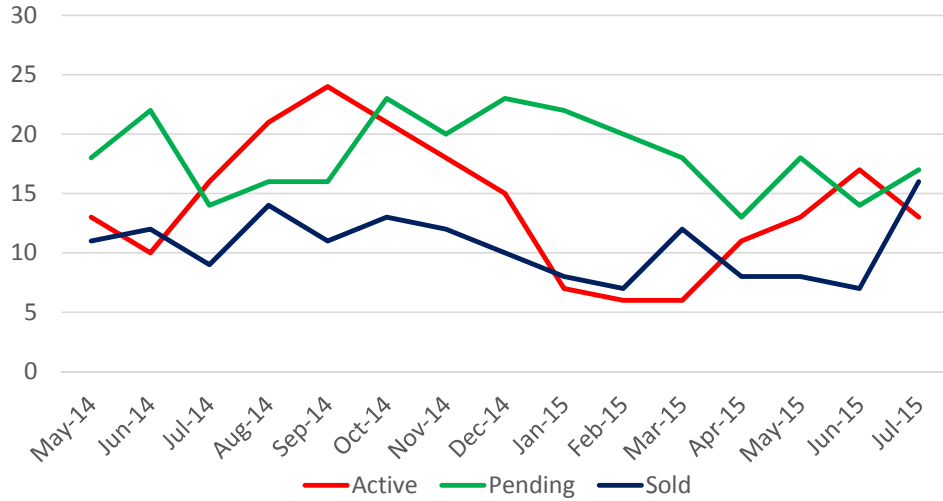
Sold



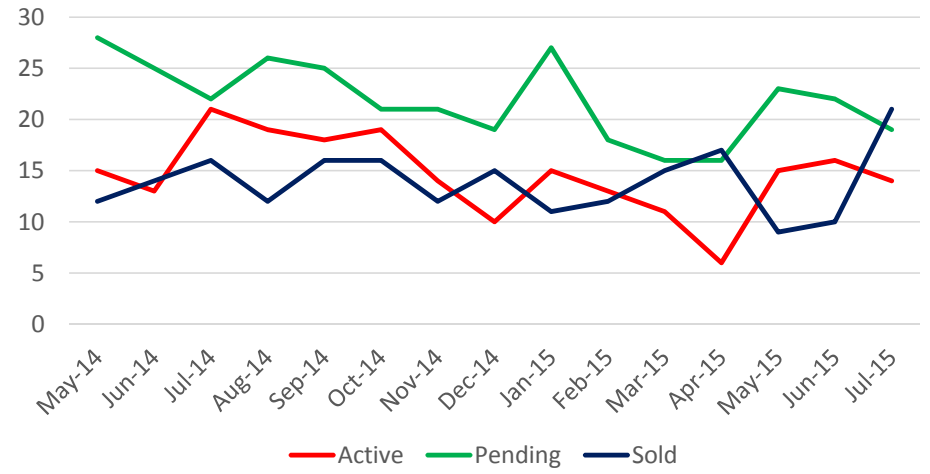
Current Inventory vs. Homes Sold Edmond – July 2015

	Active	Pending	Sold YTD
<\$100,000	13	17	66
\$100-125k	14	19	95
\$125-150k	20	62	218
\$150-175k	53	59	261
\$175-200k	116	67	291
\$200-225k	95	60	225
\$225-250k	78	52	207
\$250-275k	87	48	155
\$275-300k	109	46	177
\$300-350k	149	80	249
\$350-400k	127	49	179
\$400-450K	82	43	134
\$450-500k	73	25	76
\$500-700k	161	33	130
\$700-1 mil	79	12	47
>\$1 million	68	7	23
<hr/> Total	1324	679	2533

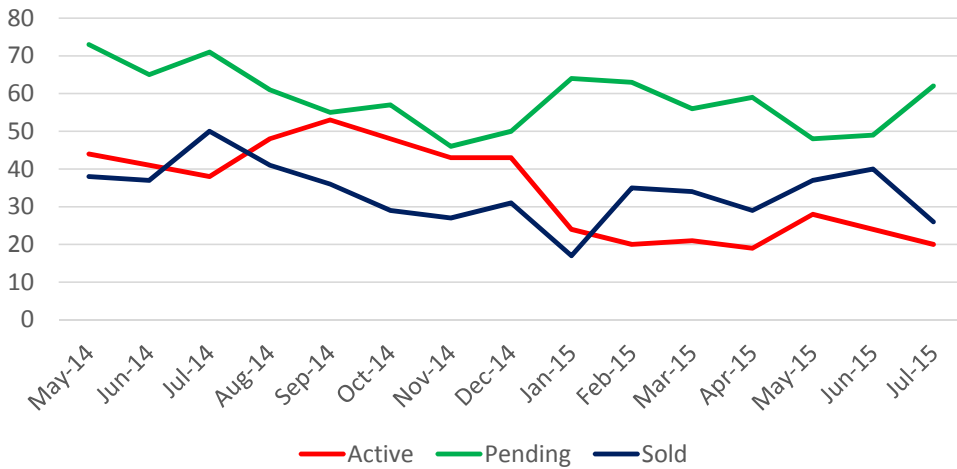
Under \$100,000



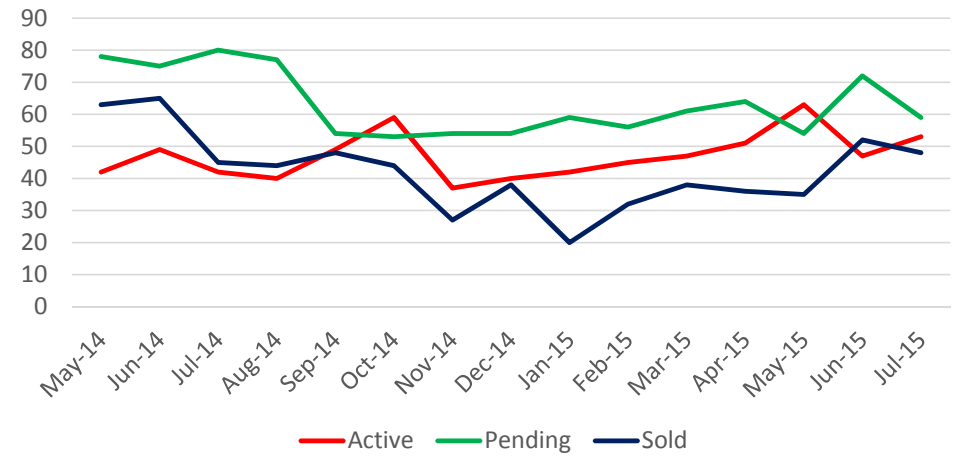
\$100,000-\$125,000



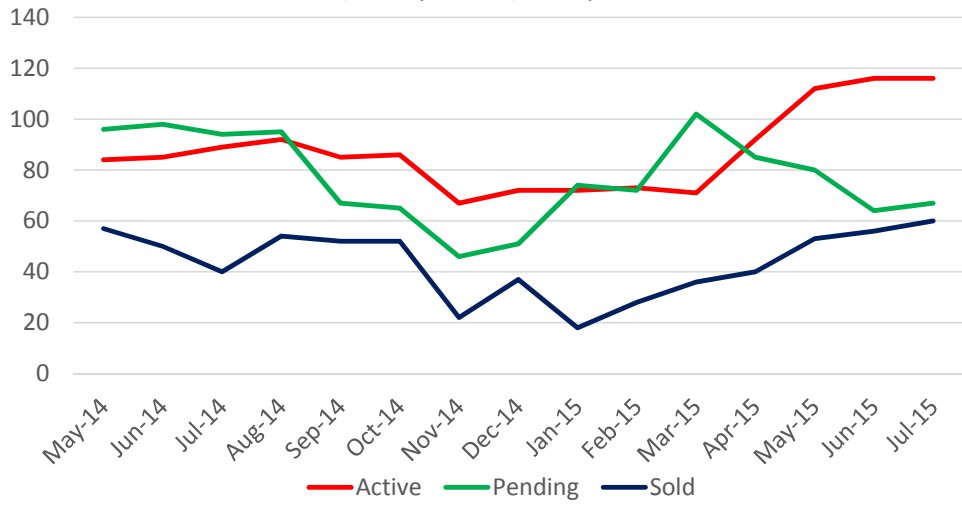
\$125,000-\$150,000



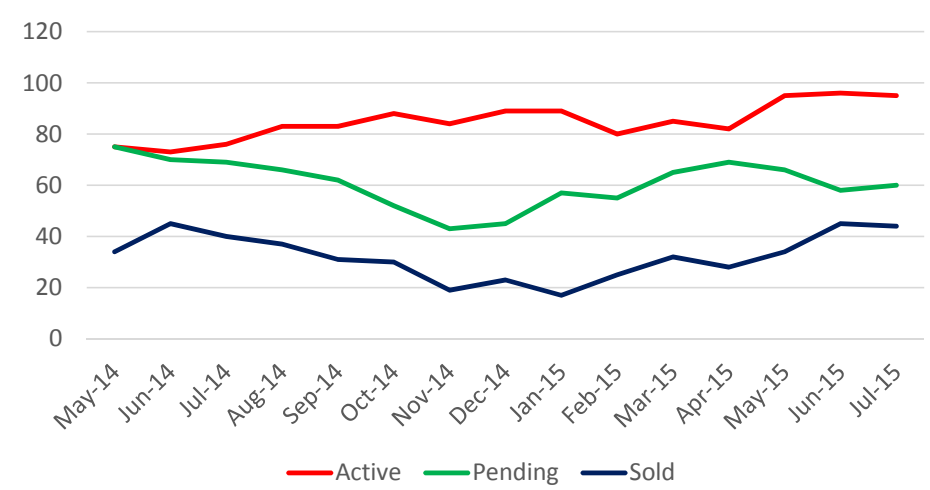
\$150,000-\$175,000



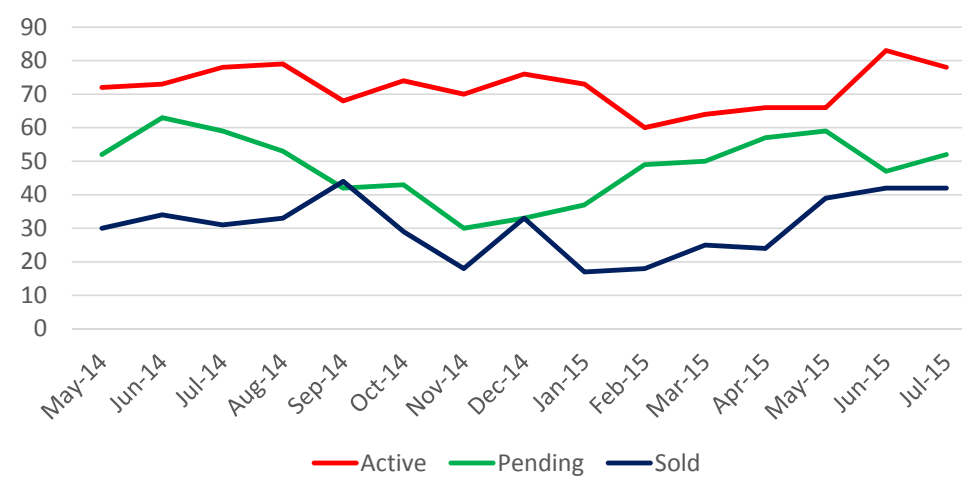
\$175,000-\$200,000



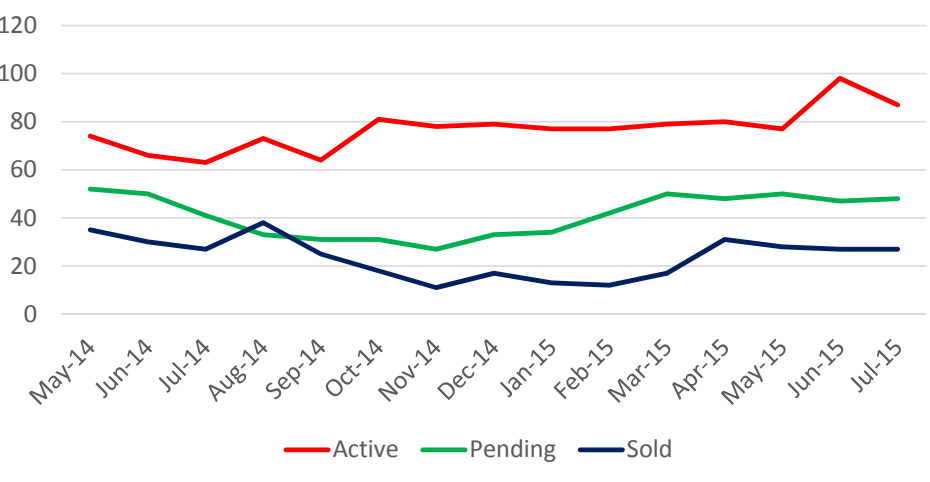
\$200,000-\$225,000



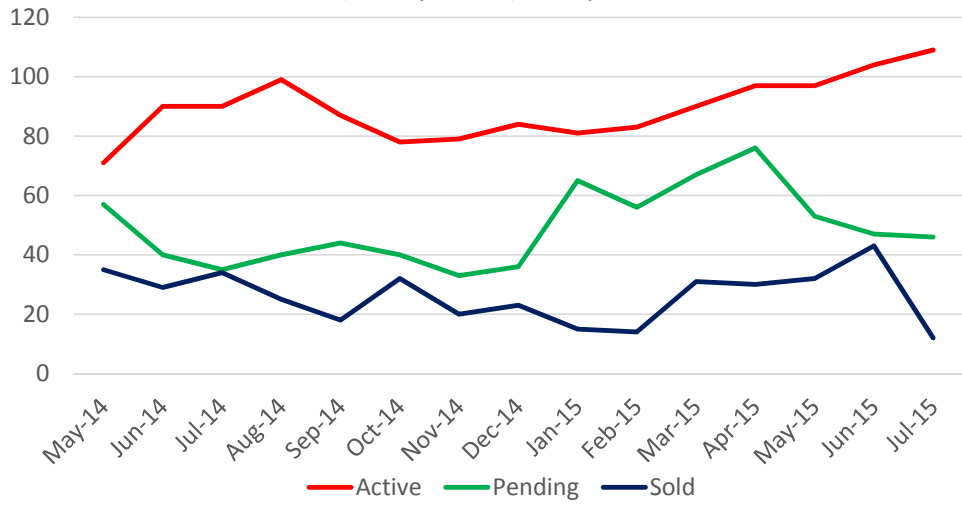
\$225,000-\$250,000



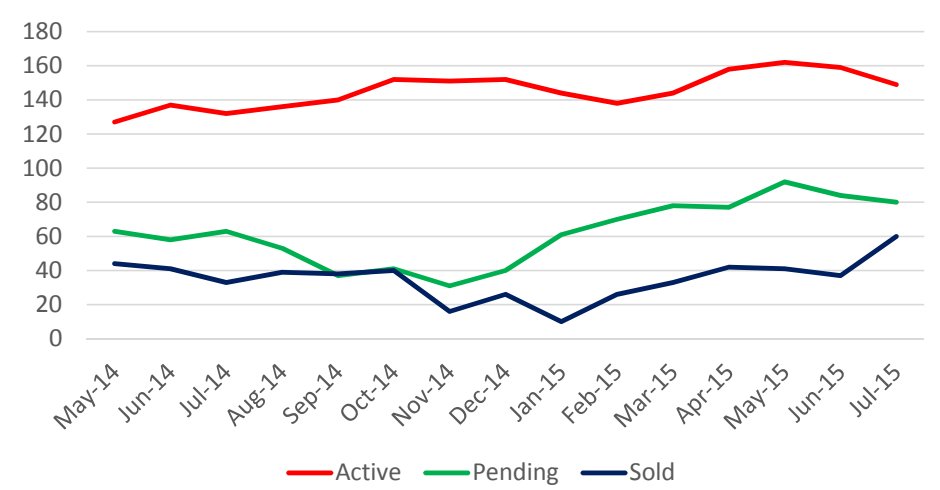
\$250,000-\$275,000



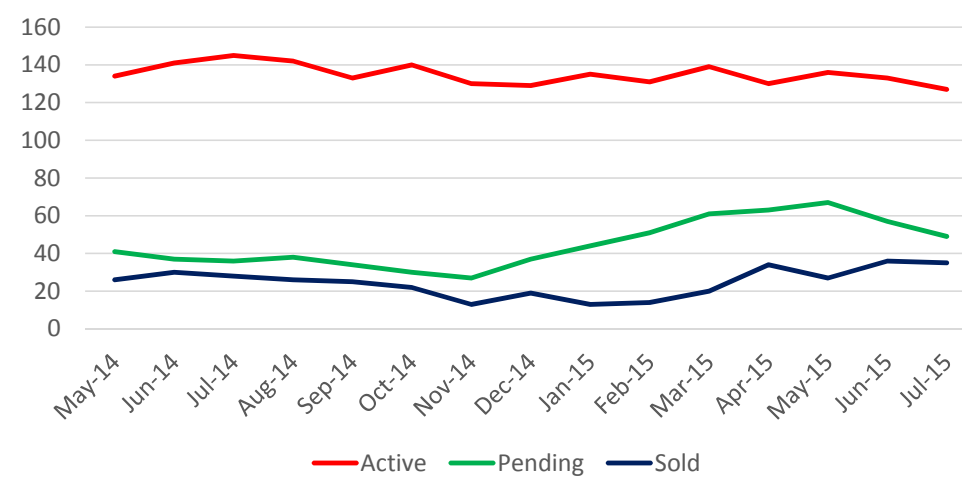
\$275,000-\$300,000



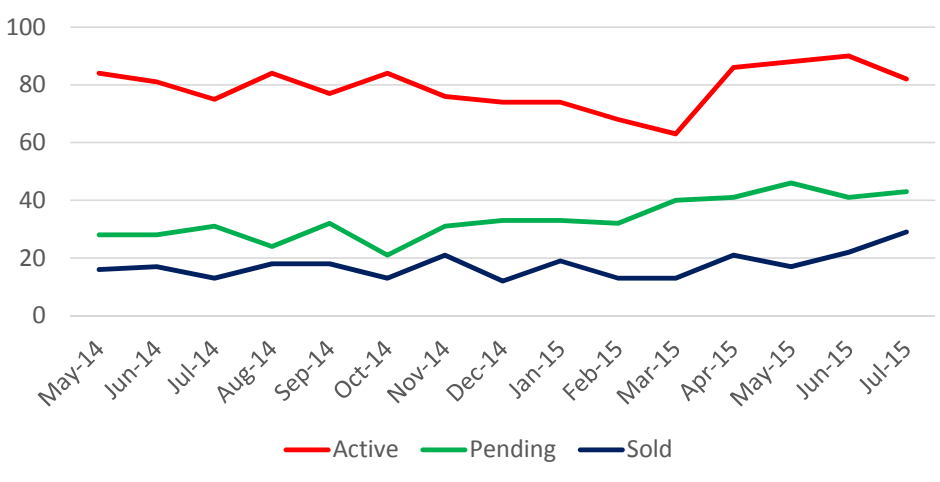
\$300,000-\$350,000



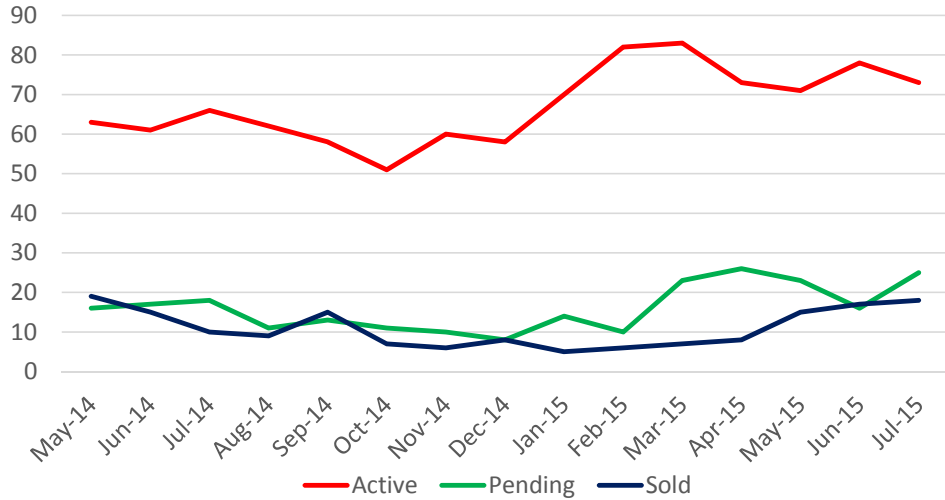
\$350,000-\$400,000



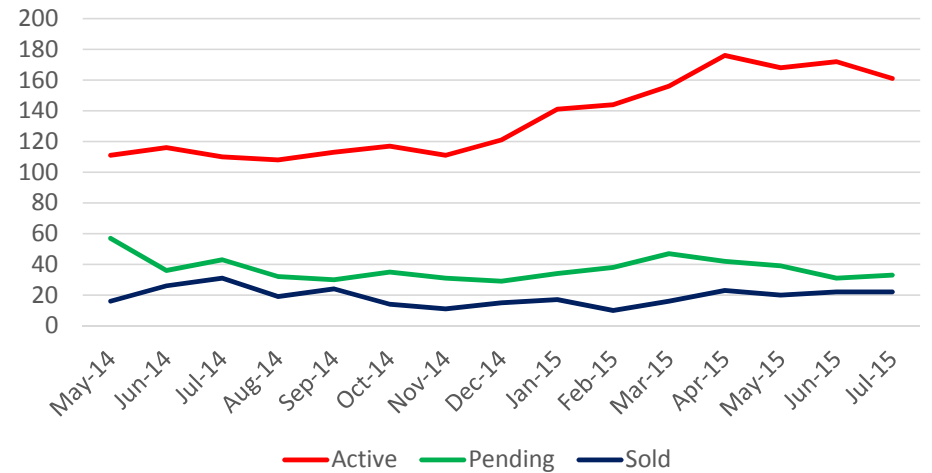
\$400,000-\$450,000



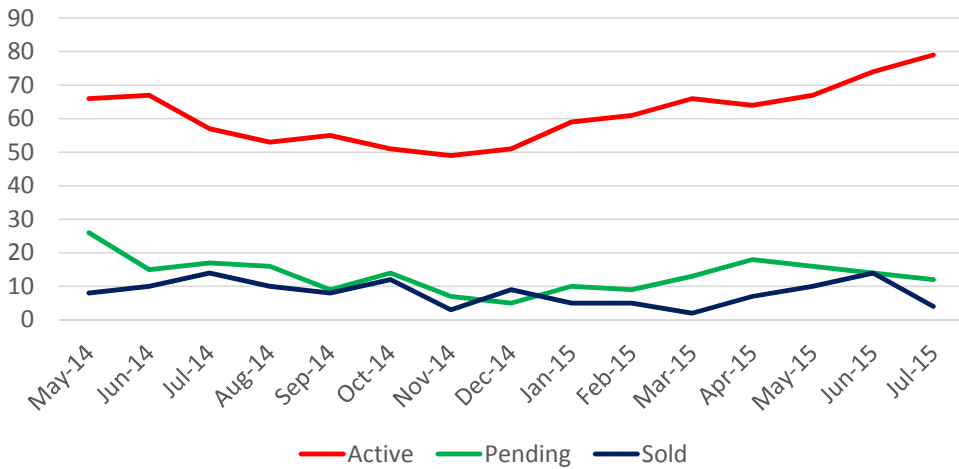
\$450,000-\$500,000



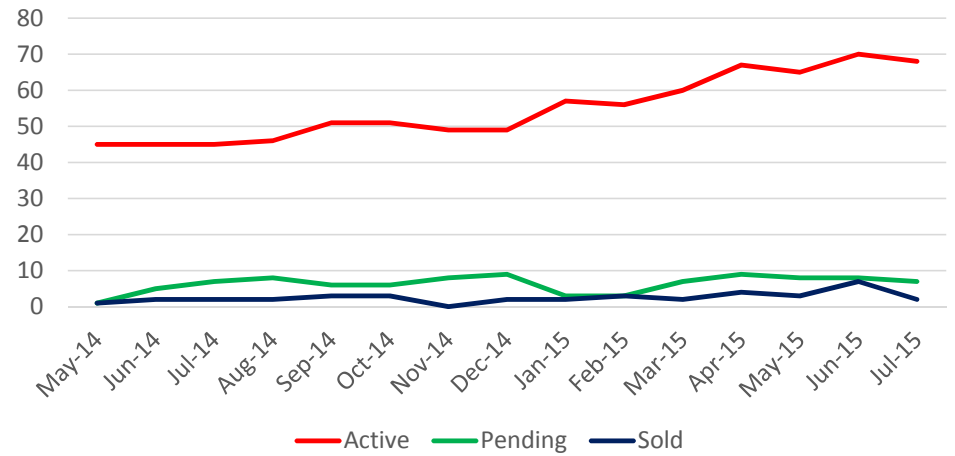
\$500,000-\$700,000



\$700,000-\$1,000,000

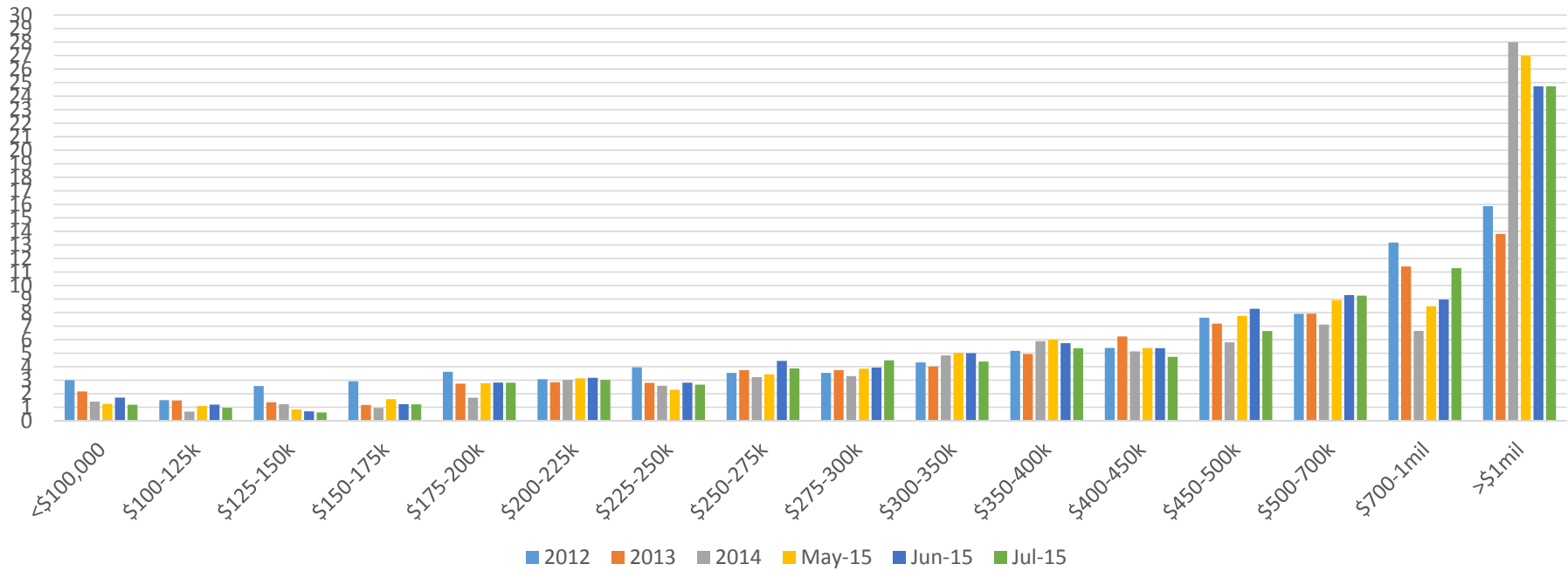


Over \$1,000,000



Absorption Rates

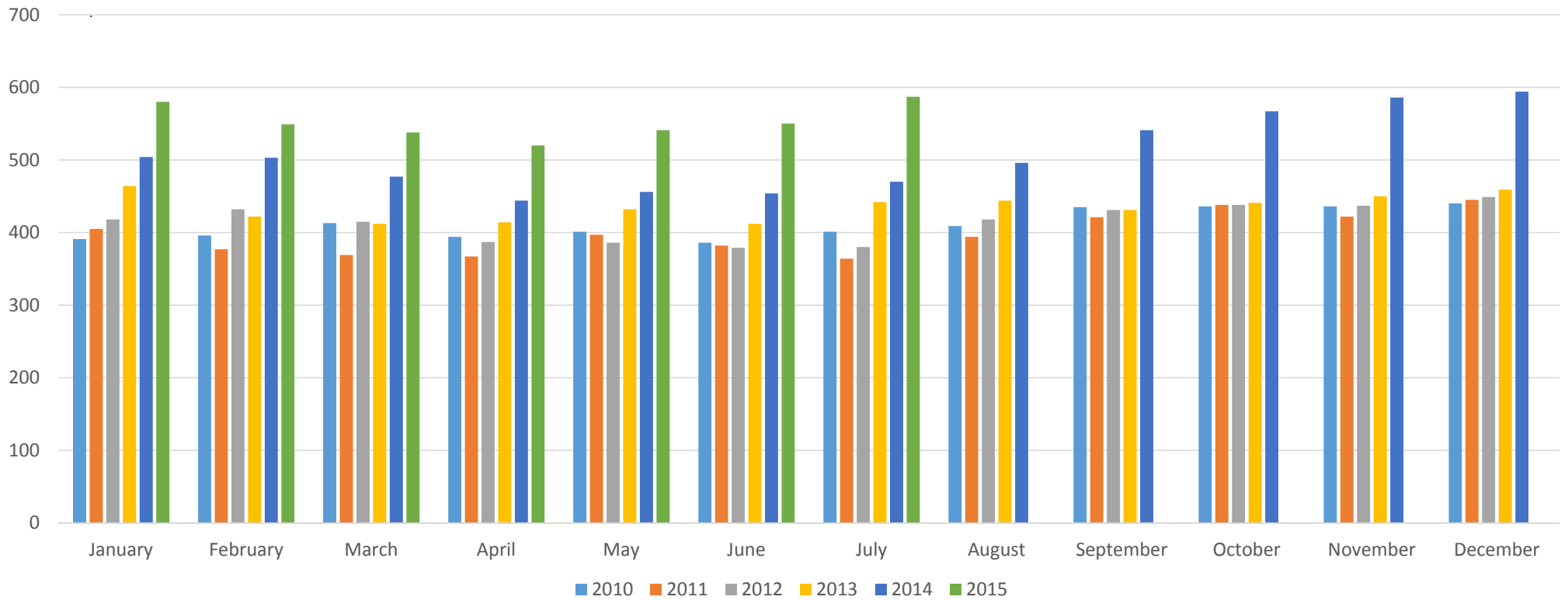
In Months



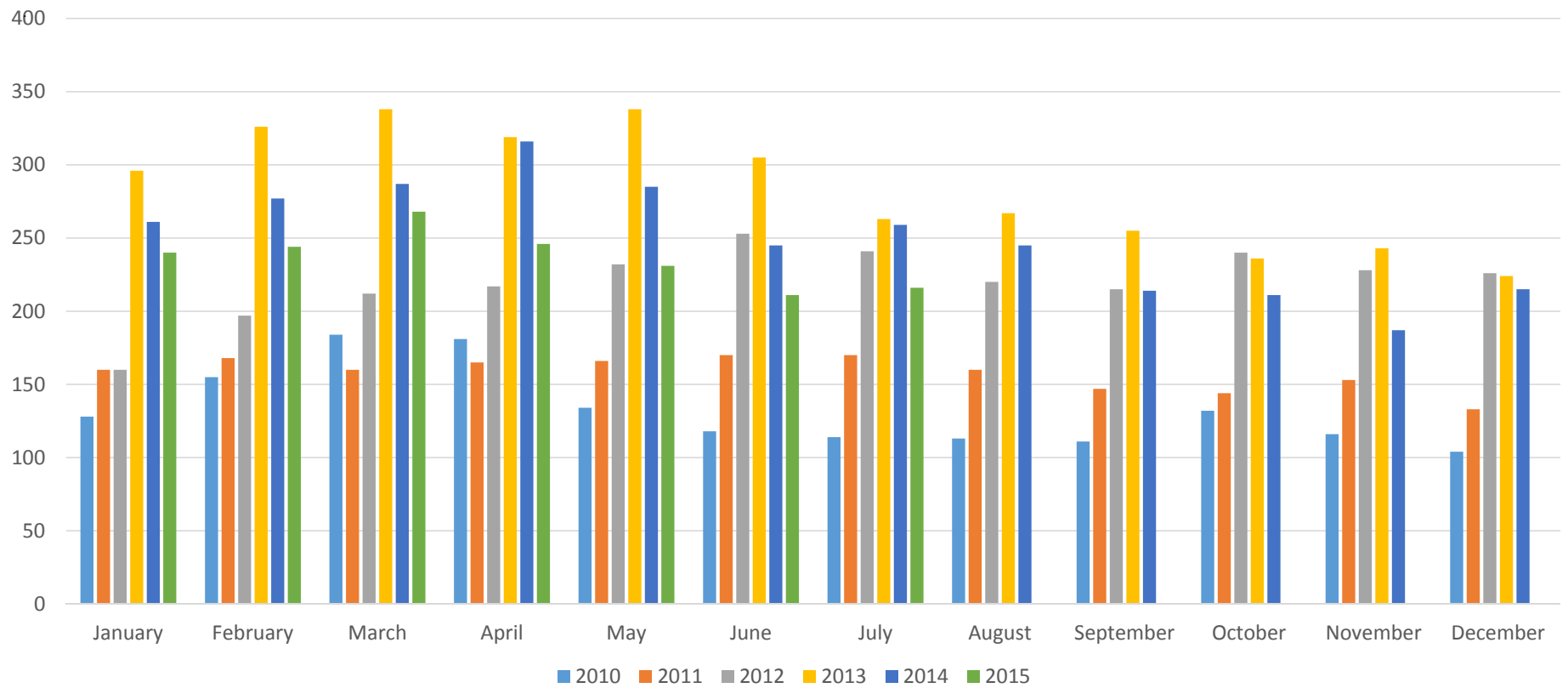
Current New Home Inventory
vs.
New Home Sales
July 2015

	Active Listings	Under Contract	Sold-YTD
<\$150,000	3	4	31
\$150-200	55	13	100
\$200-250	92	57	123
\$250-300	96	49	106
\$300-350	64	23	90
\$350-400	82	24	84
\$400-450	57	17	48
\$450-500	35	7	29
\$500-700	73	18	55
\$700-1 Mil	20	3	15
> 1 Mil	10	1	3
<hr/>			
Total	587	216	684

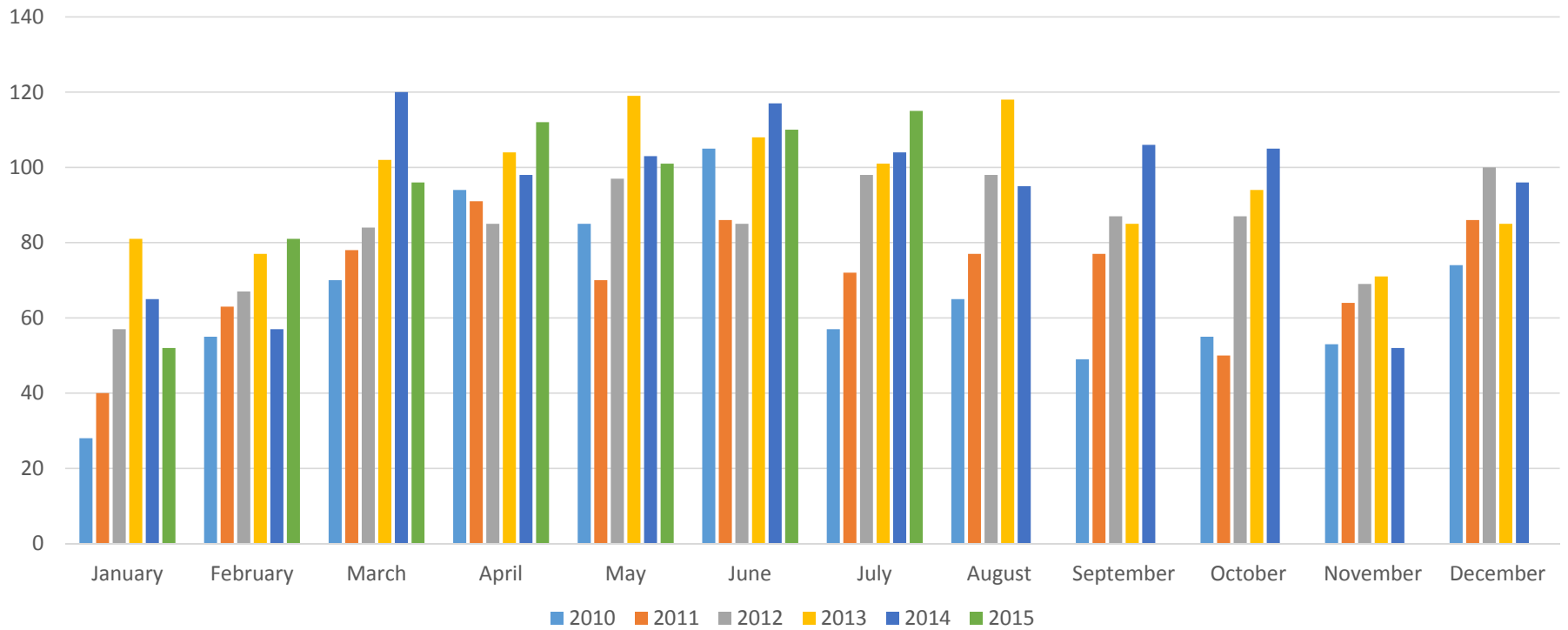
New Homes Active



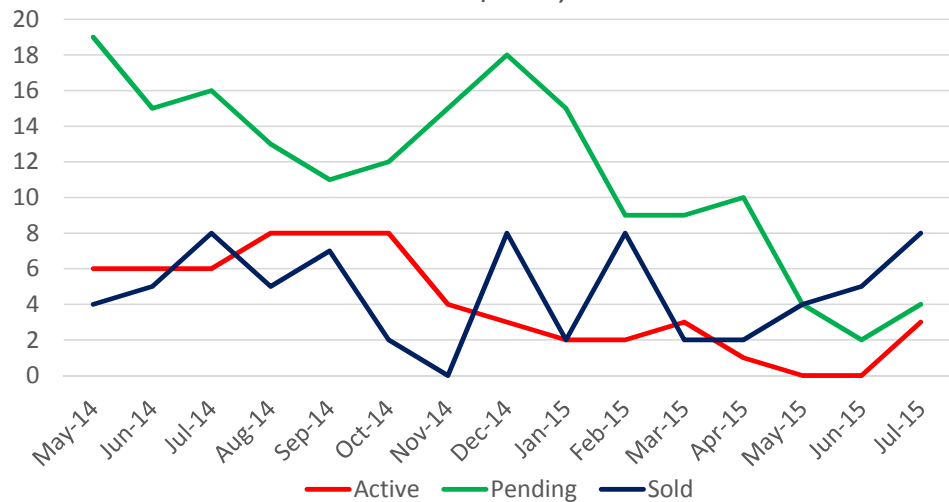
New Homes Under Contract



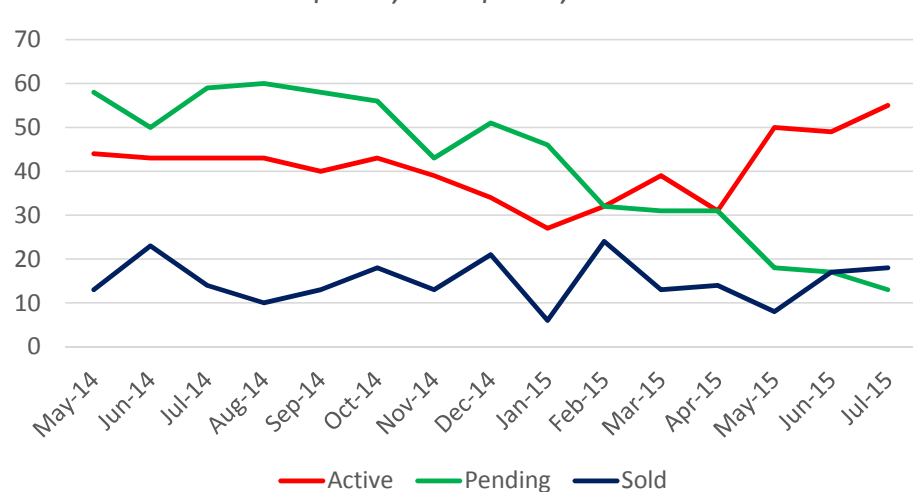
New Homes Sold



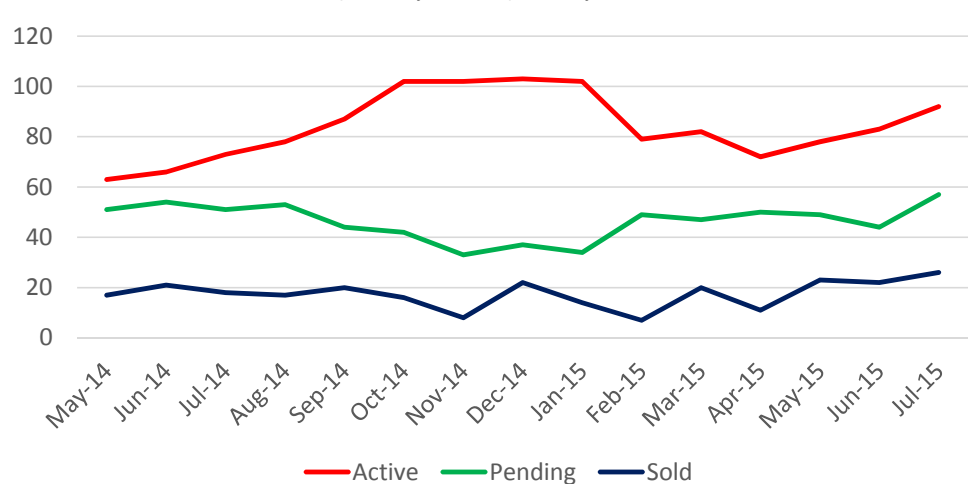
Under \$150,000



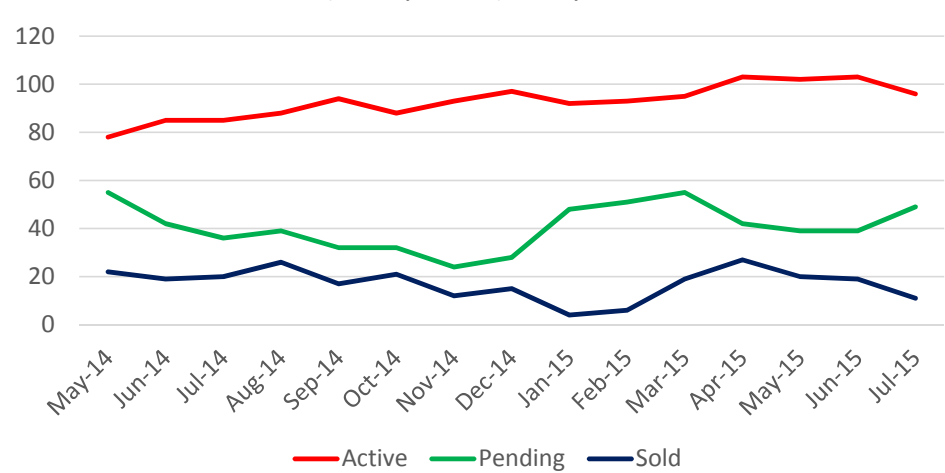
\$150,000-\$200,000



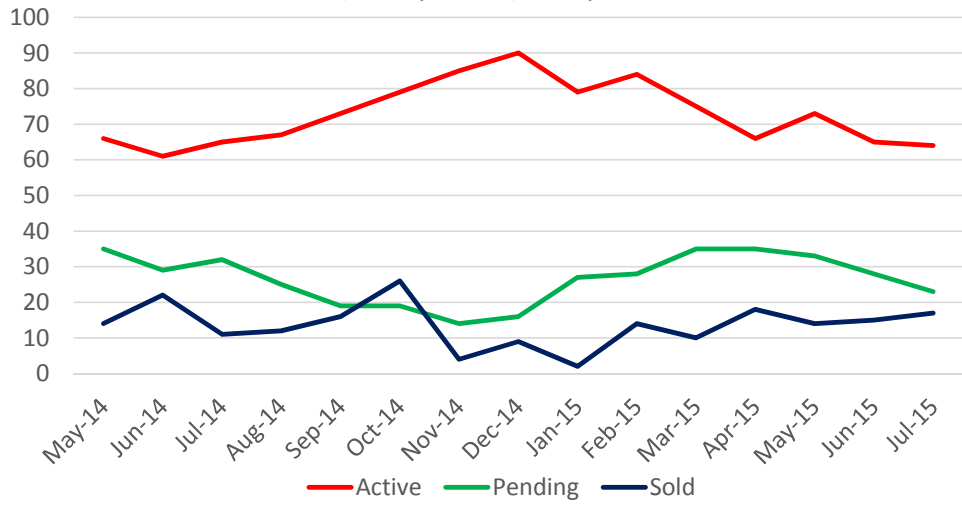
\$200,000-\$250,000



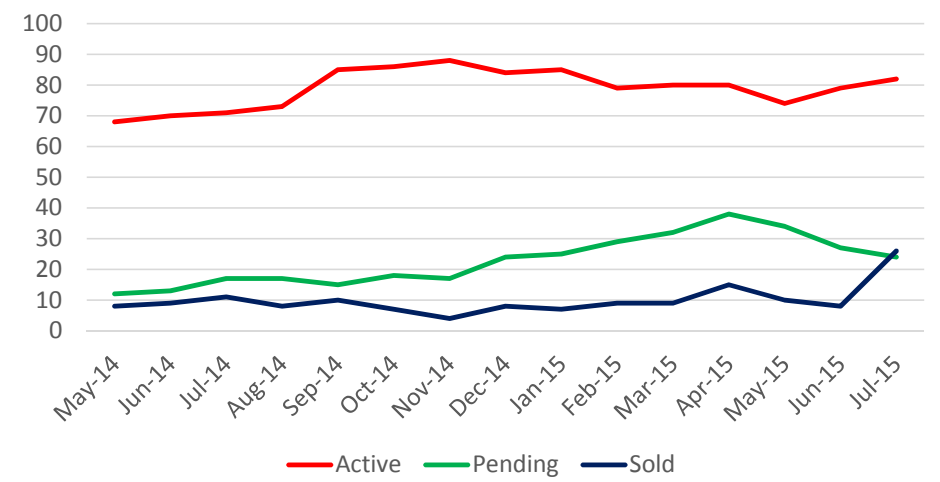
\$250,000-\$300,000



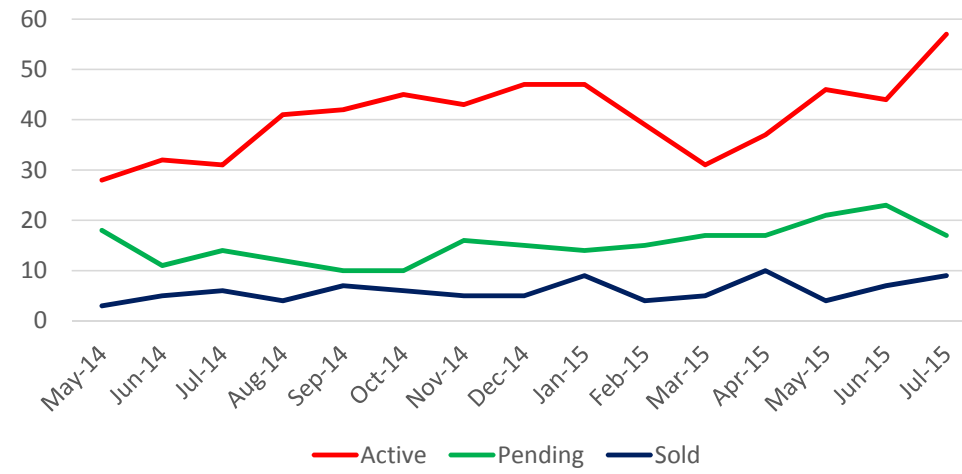
\$300,000-\$350,000



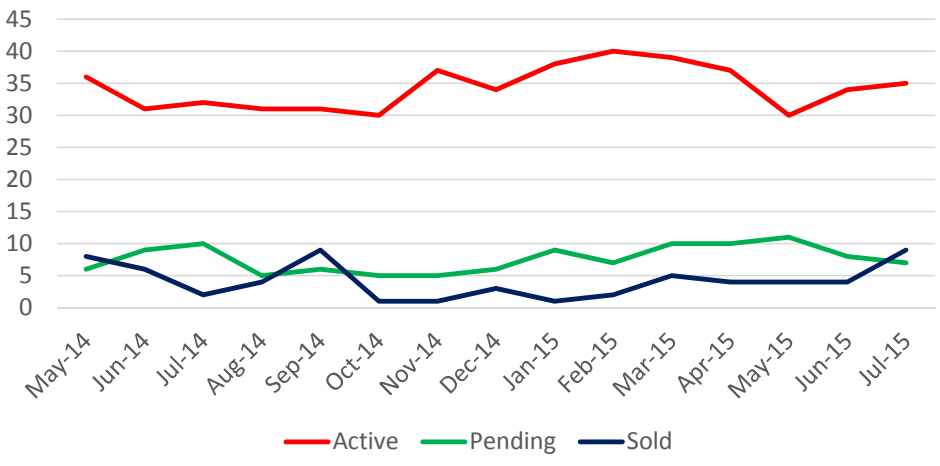
\$350,000-\$400,000



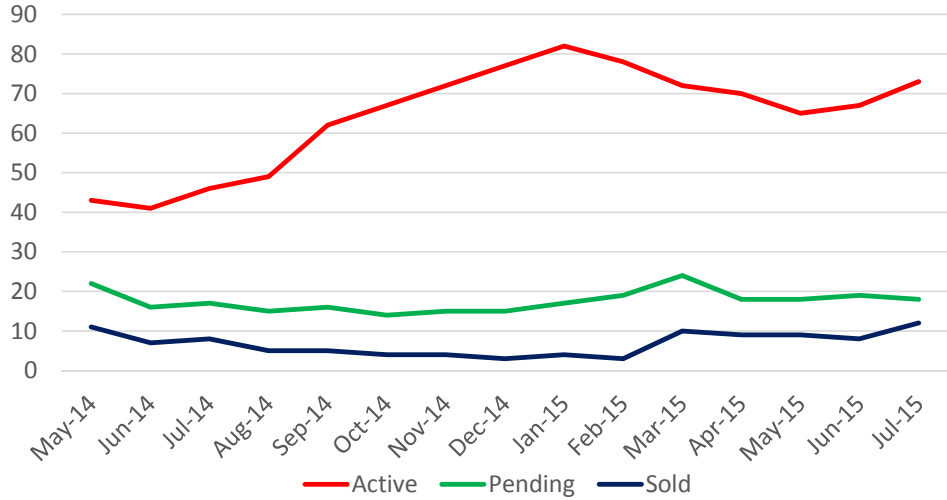
\$400,000-\$450,000



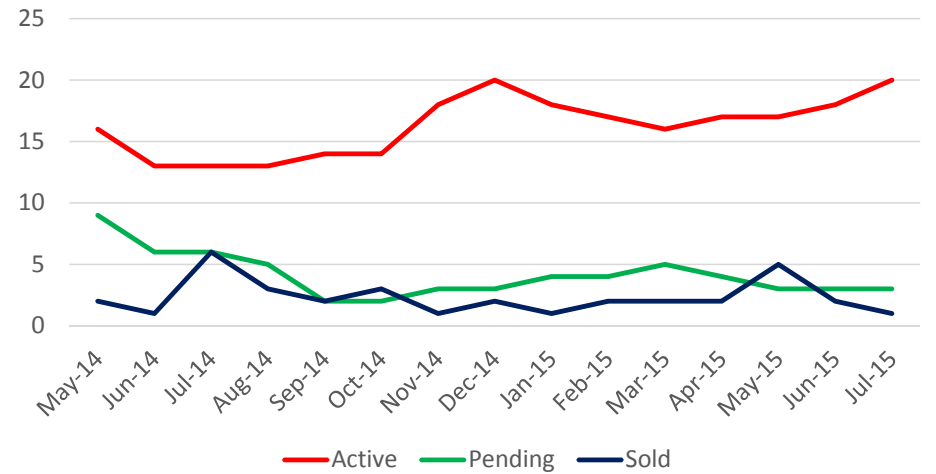
\$450,000-\$500,000



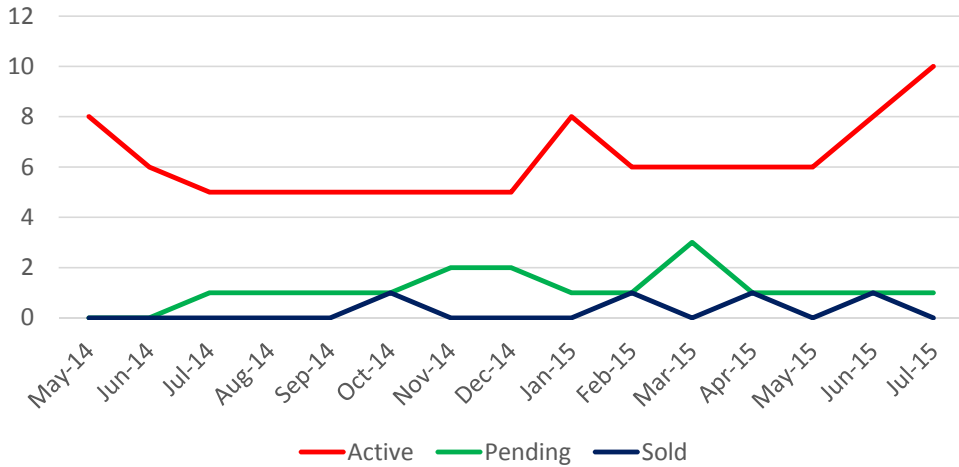
\$500,000-\$700,000



\$700,000-\$1,000,000



Over \$1,000,000



Absorption Rate New Homes

in months

