



# Preston Report

Edmond Real Estate Market  
June 2015

Prepared by

**Brian Preston**

RE/MAX Associates



Mobile: 405-826-5725 Office: 405-359-8700

[bpreston88@sbcglobal.net](mailto:bpreston88@sbcglobal.net)

[www.Edmond4Sale.com](http://www.Edmond4Sale.com)

Realtor of the Year 1995 & 2002  
Lifetime Achievement 2009  
Most Cooperative Realtor 1992  
RE/MAX Hall of Fame

# Edmond Real Estate

## 2015 Residential Homes

	Active	Pending	Sold
January	1165	638	207
February	1137	644	262
March	1185	753	336
April	1258	763	377
May	1323	742	408
June	1377	671	477
July			
August			
September			
October			
November			
December			
		Total	2067

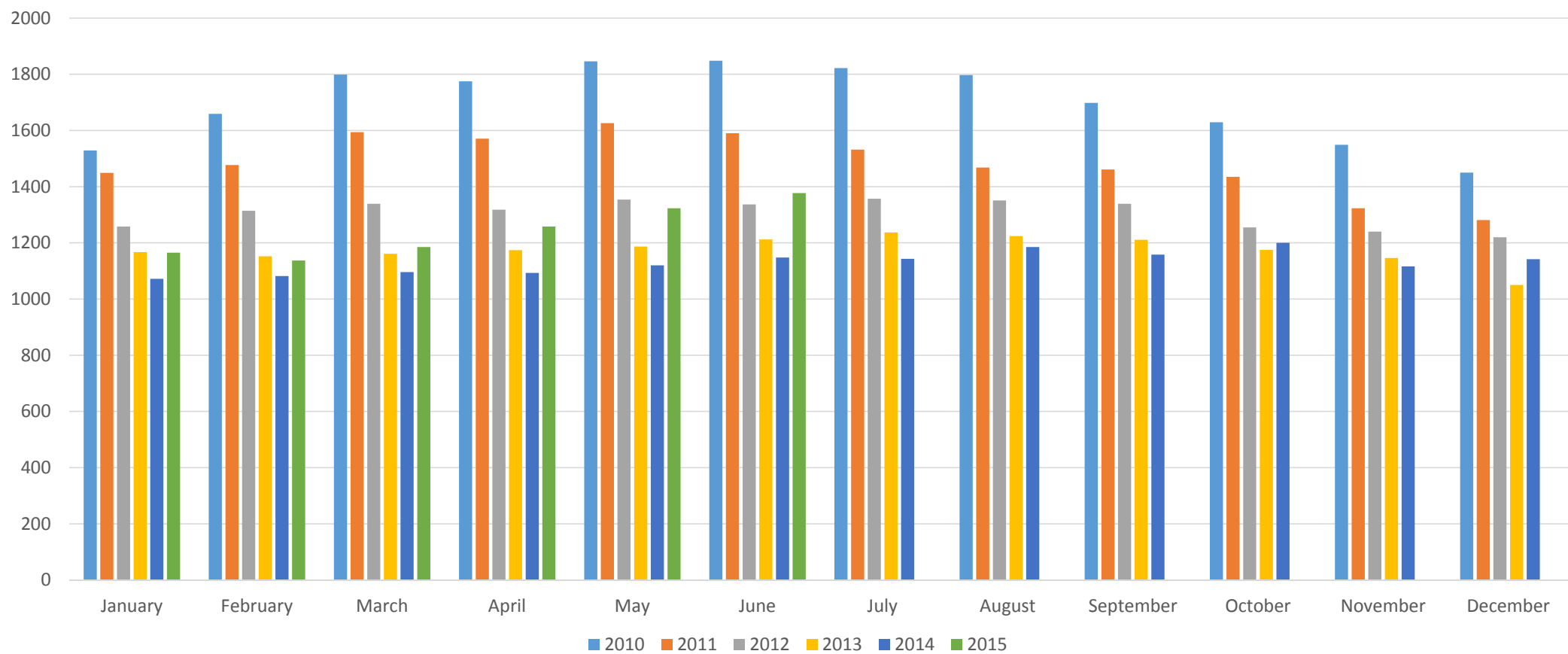
Preston Report

Based on information from MLSOK.com for the period (01/01/15) through (06/30/15) Edmond, Deer Creek and Oakdale School Districts, while information is deemed reliable it is not guaranteed

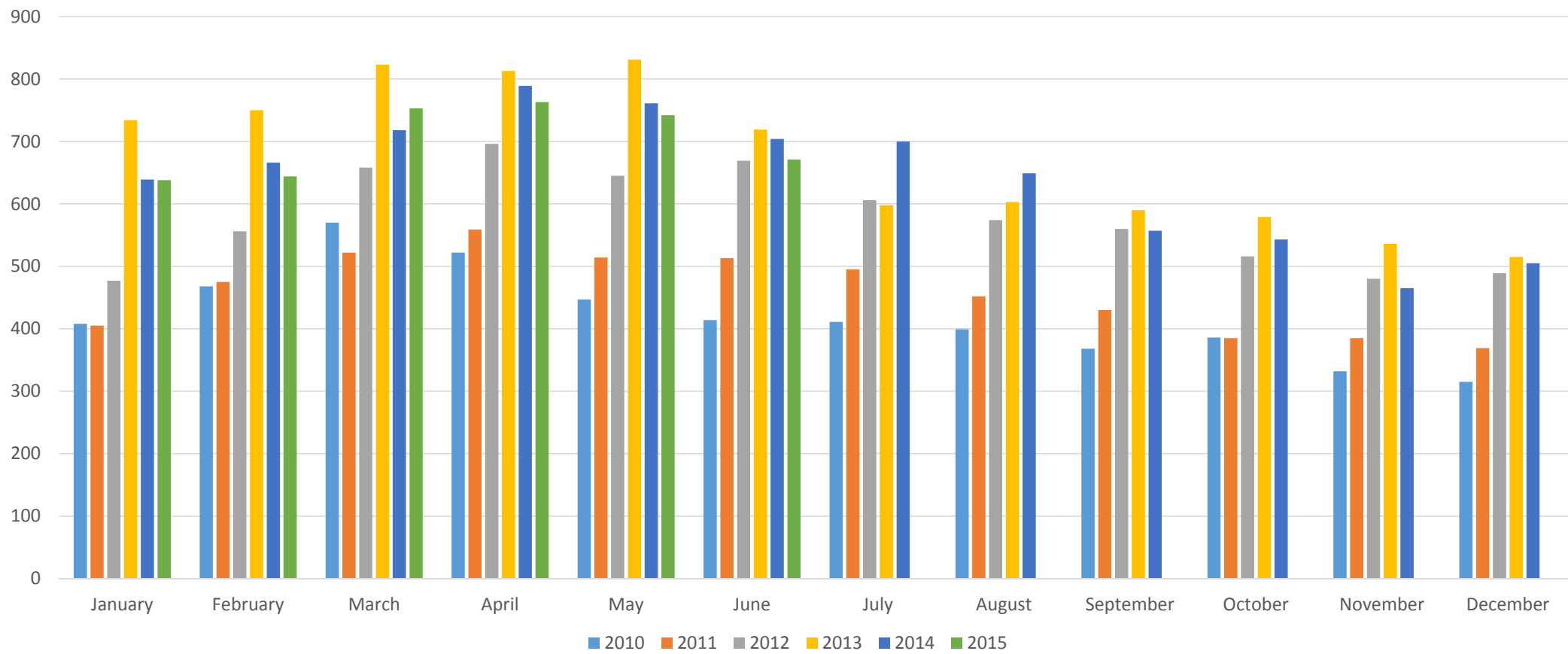
# Average Sales Price

	Average Price	Total Volume	Avg Price New Home	Total Volume New Homes
Jan.	\$290,318	\$60,095,826	\$331,162	\$16,558,100
Feb.	\$271,313	\$71,084,006	\$297,379	\$24,087,699
March	\$261,872	\$87,988,992	\$337,246	\$32,375,616
April	\$286,741	\$108,101,357	\$342,264	\$38,333,568
May	\$288,382	\$117,659,856	\$339,621	\$34,301,721
June	\$296,216	\$141,295,032	\$320,222	\$34,583,976
July				
August				
Sept.				
Oct.				
Nov.				
Dec.				
Total	\$283,612	\$586,225,069	\$328,906	\$180,240,756

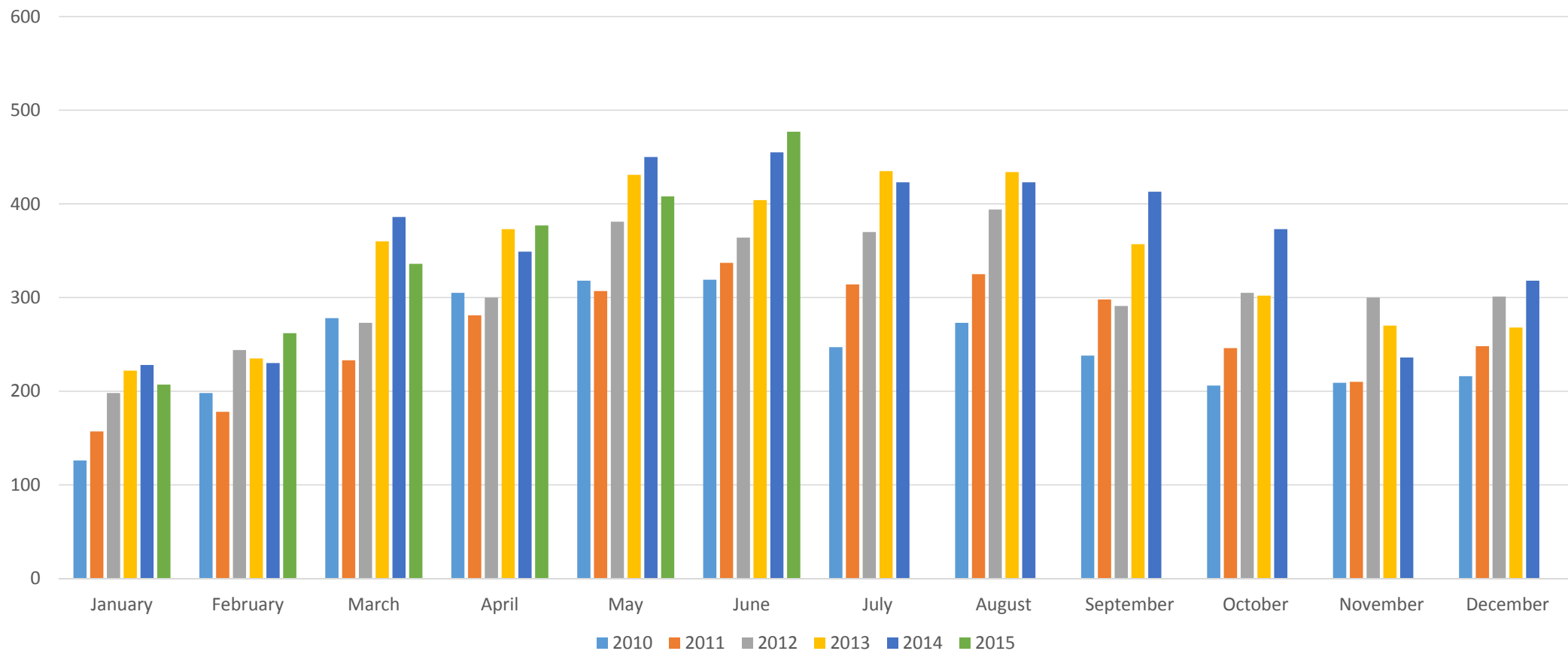
# Active Listings



# Under Contract



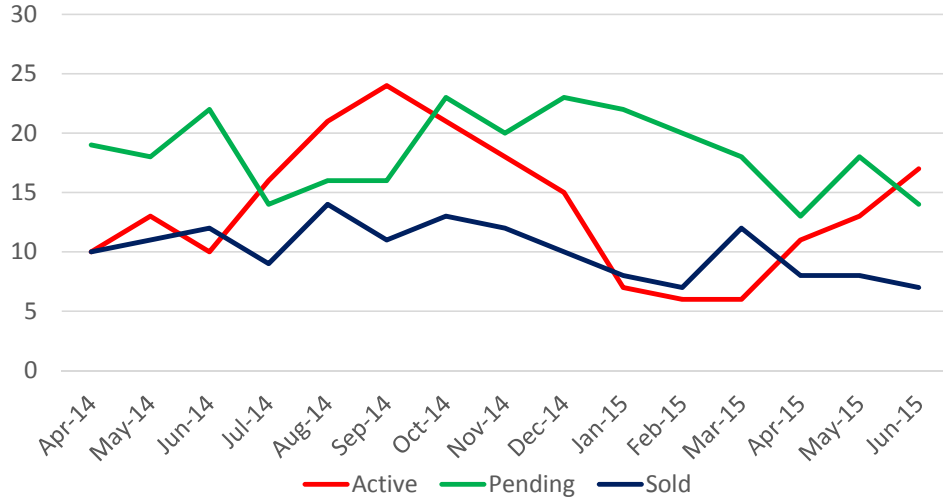
# Sold



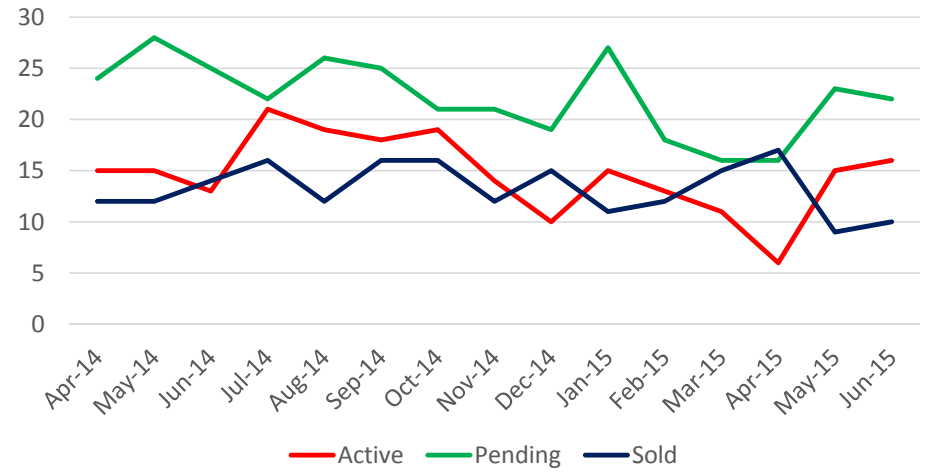
# Current Inventory vs. Homes Sold Edmond – June 2015

	Active	Pending	Sold YTD
<\$100,000	17	14	50
\$100-125k	16	22	74
\$125-150k	24	49	192
\$150-175k	47	72	213
\$175-200k	116	64	231
\$200-225k	96	58	181
\$225-250k	83	47	165
\$250-275k	98	47	128
\$275-300k	104	47	165
\$300-350k	159	84	189
\$350-400k	133	57	144
\$400-450K	90	41	105
\$450-500k	78	16	58
\$500-700k	172	31	108
\$700-1 mil	74	14	43
>\$1 million	70	8	21
<hr/> Total	1377	671	2067

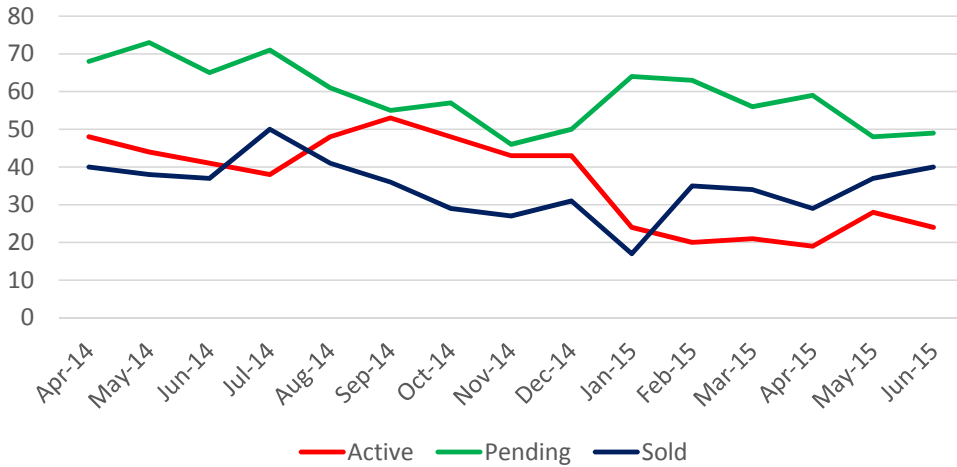
Under \$100,000



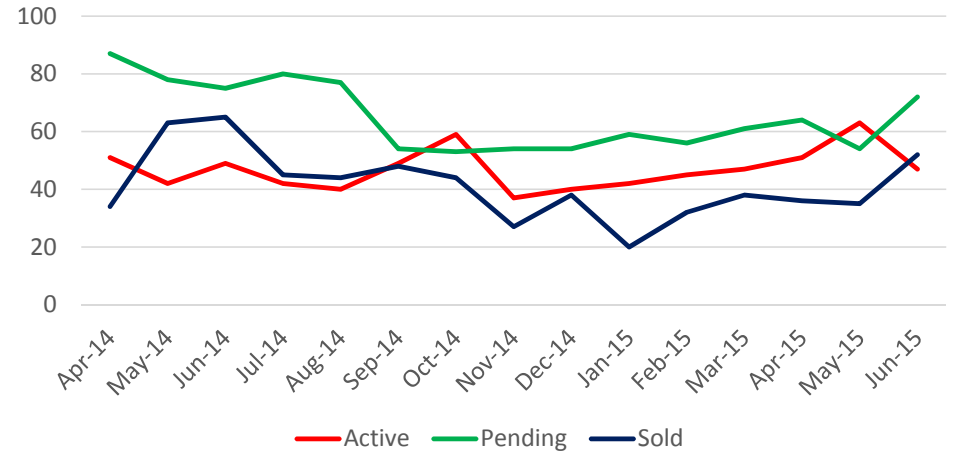
\$100,000-\$125,000



\$125,000-\$150,000

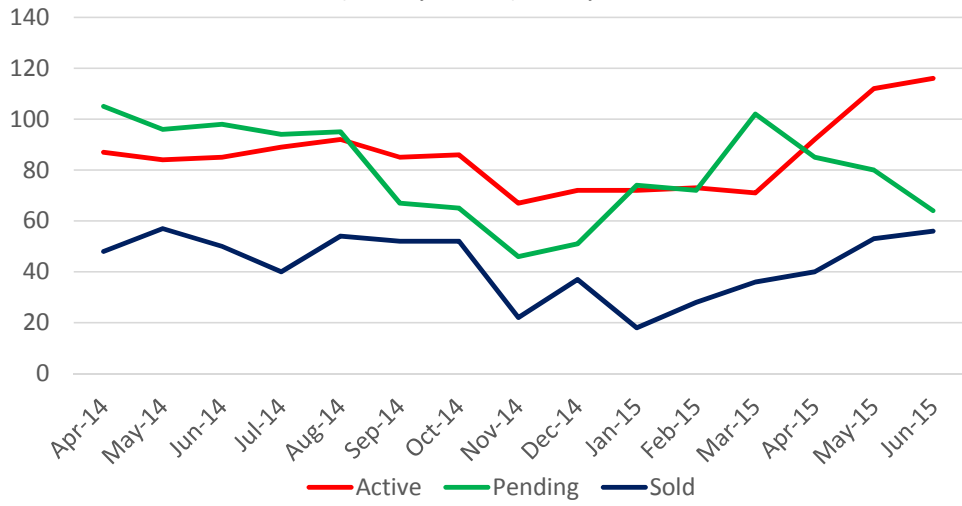


\$150,000-\$175,000

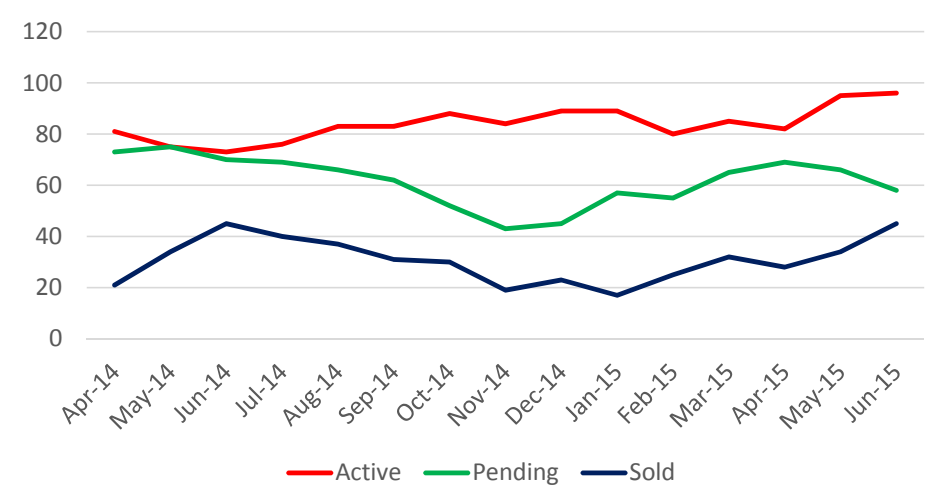




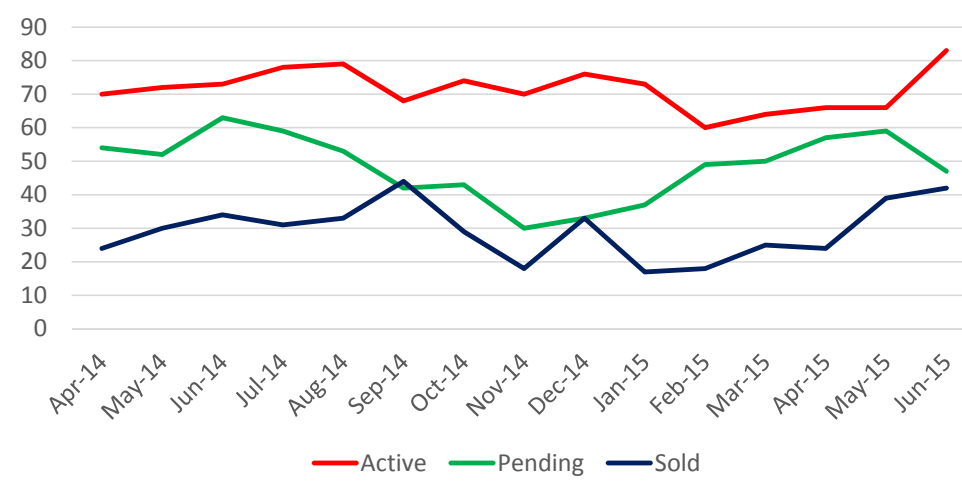
\$175,000-\$200,000



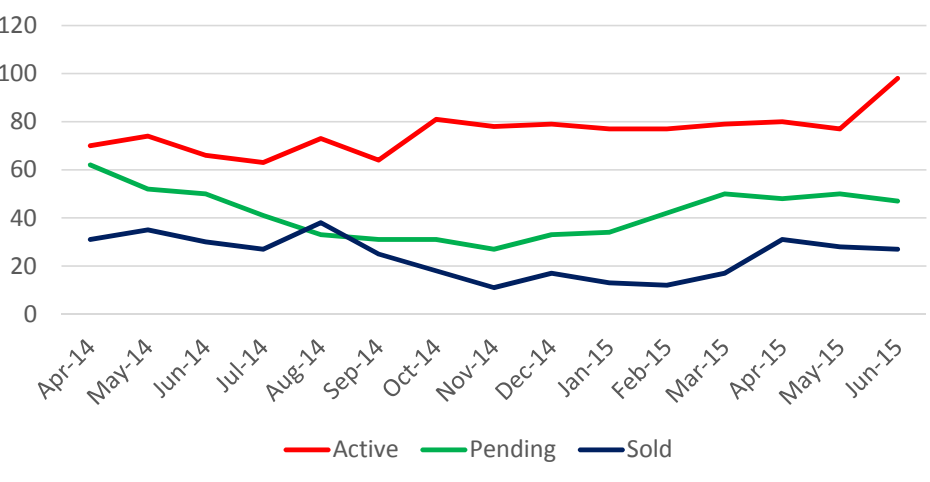
\$200,000-\$225,000



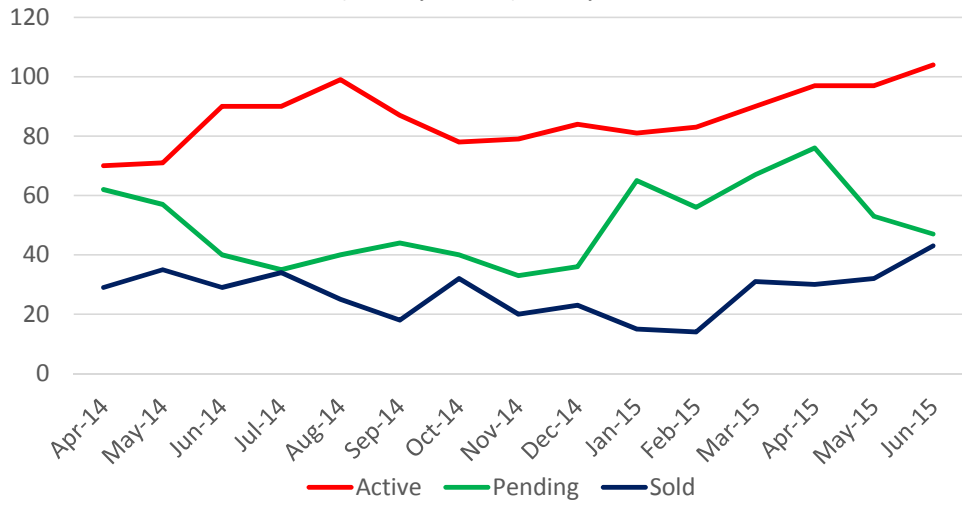
\$225,000-\$250,000



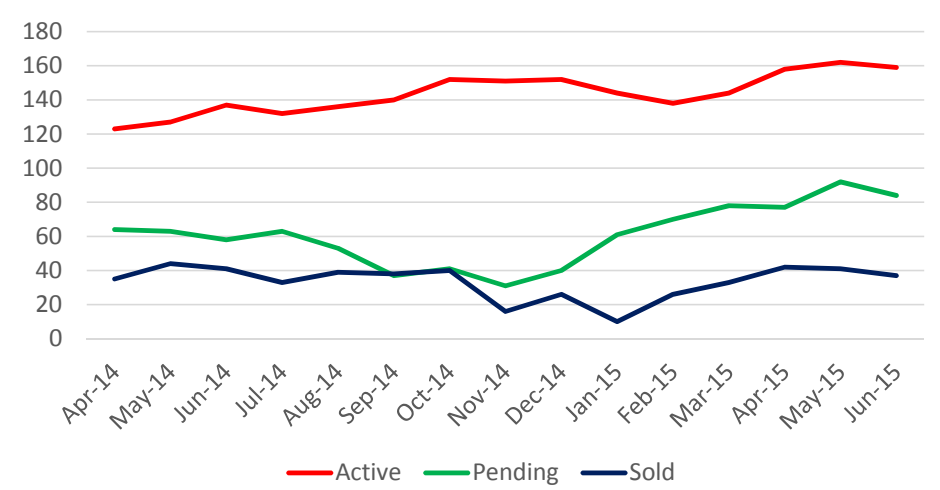
\$250,000-\$275,000



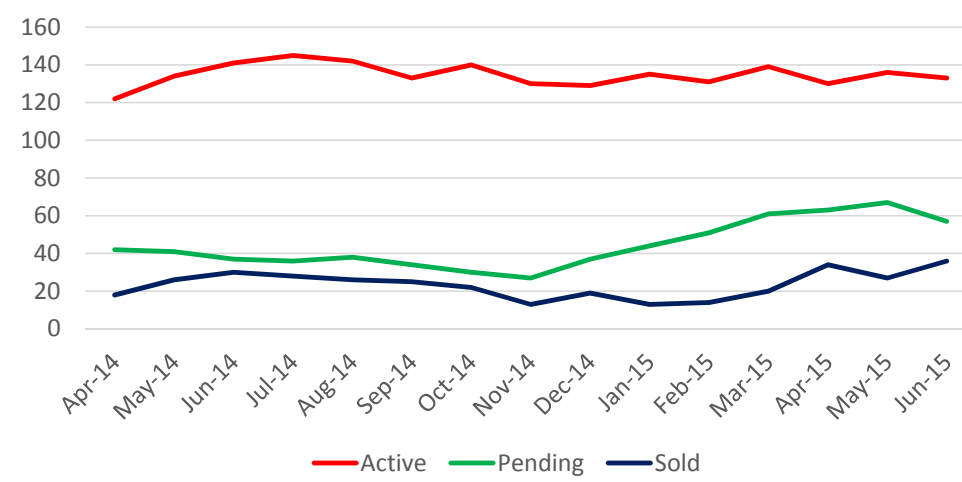
\$275,000-\$300,000



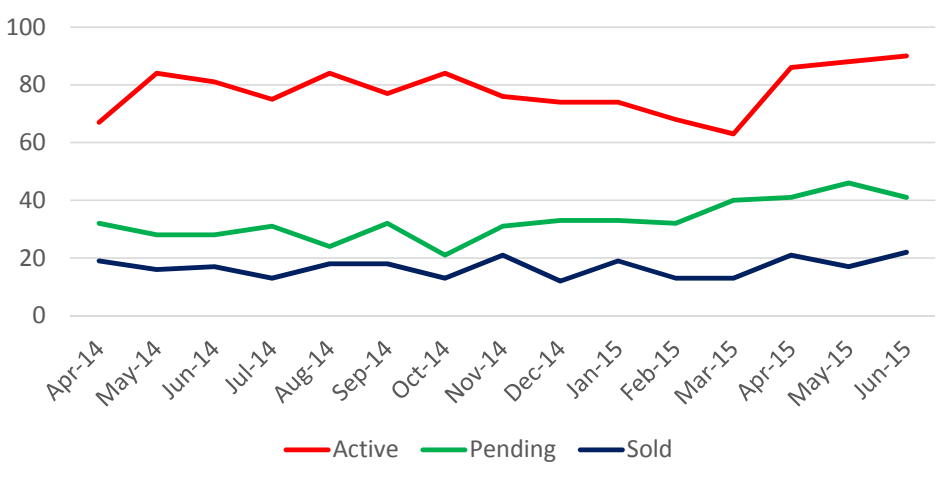
\$300,000-\$350,000



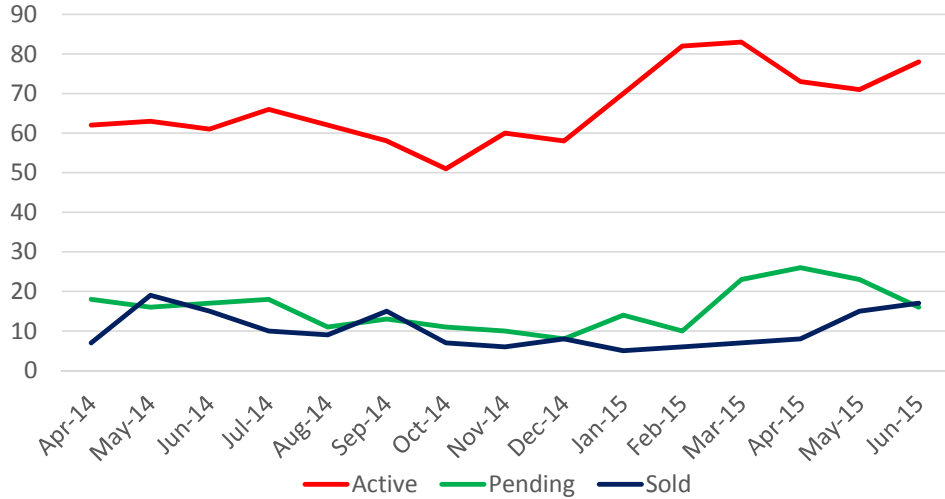
\$350,000-\$400,000



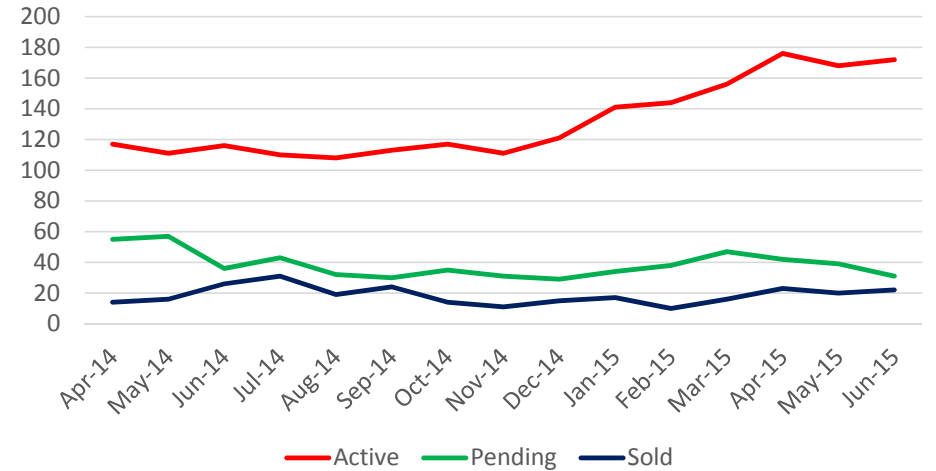
\$400,000-\$450,000



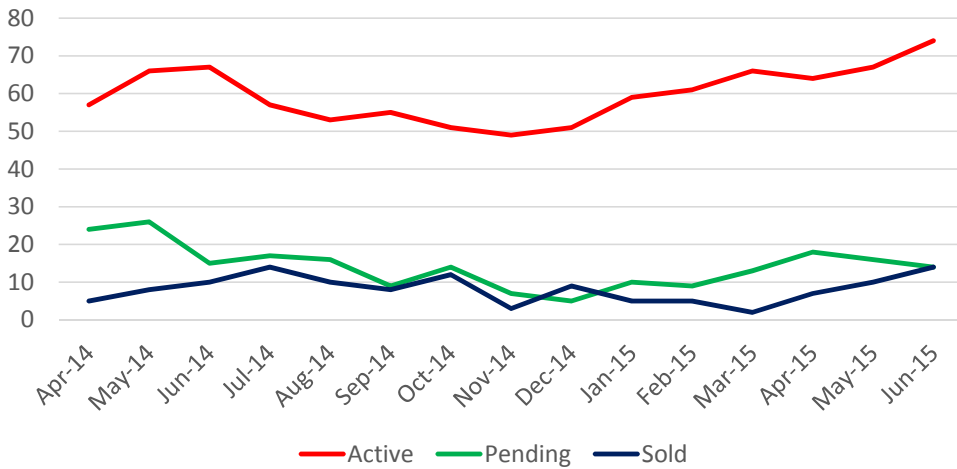
\$450,000-\$500,000



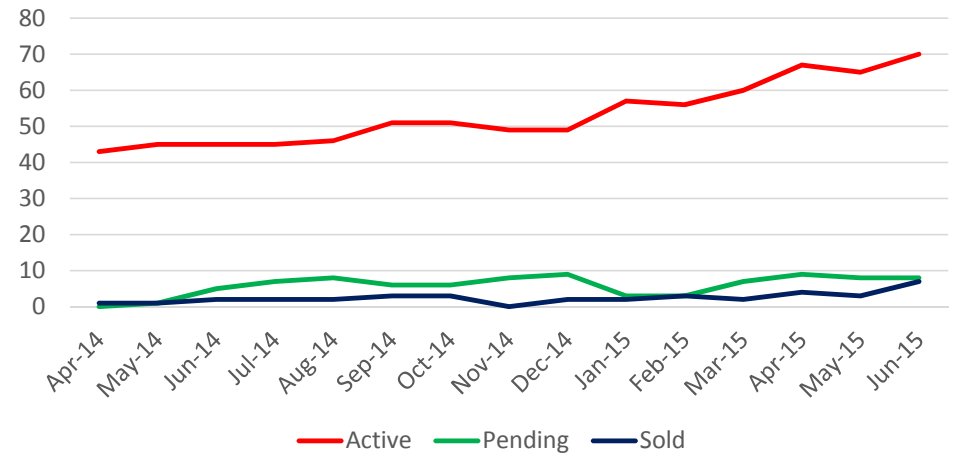
\$500,000-\$700,000



\$700,000-\$1,000,000

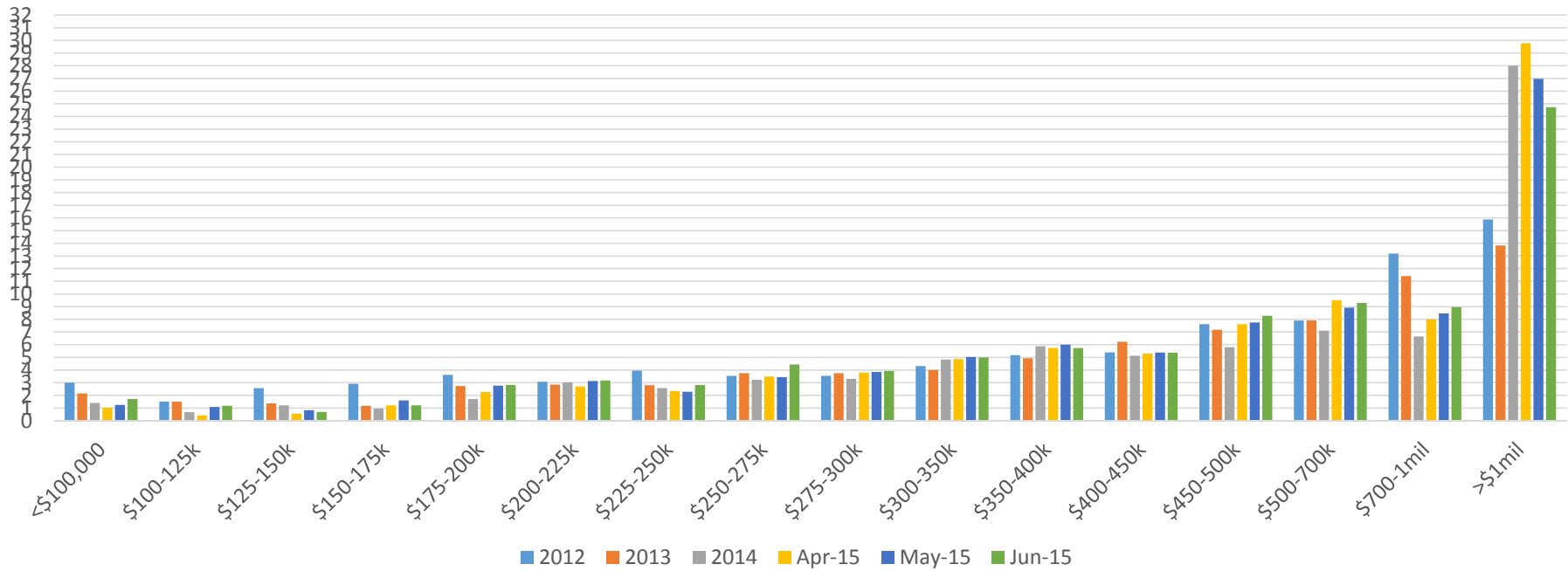


Over \$1,000,000



# Absorption Rates

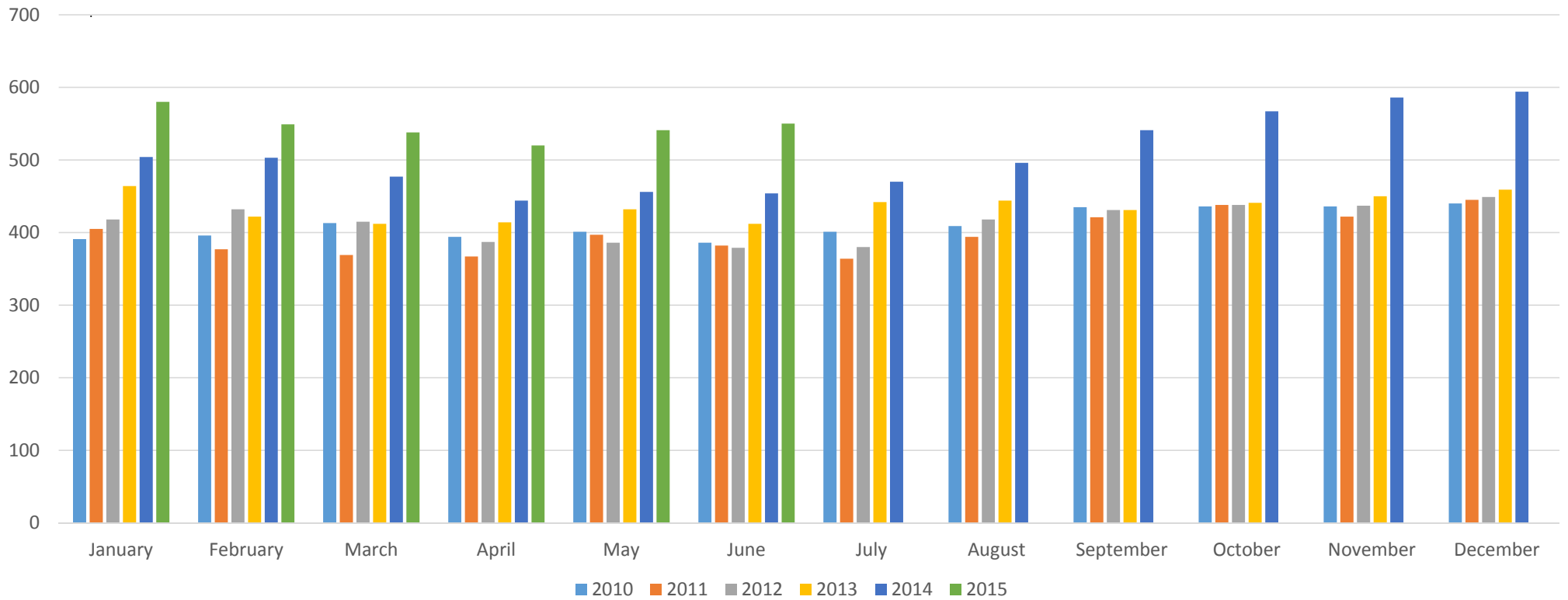
In Months



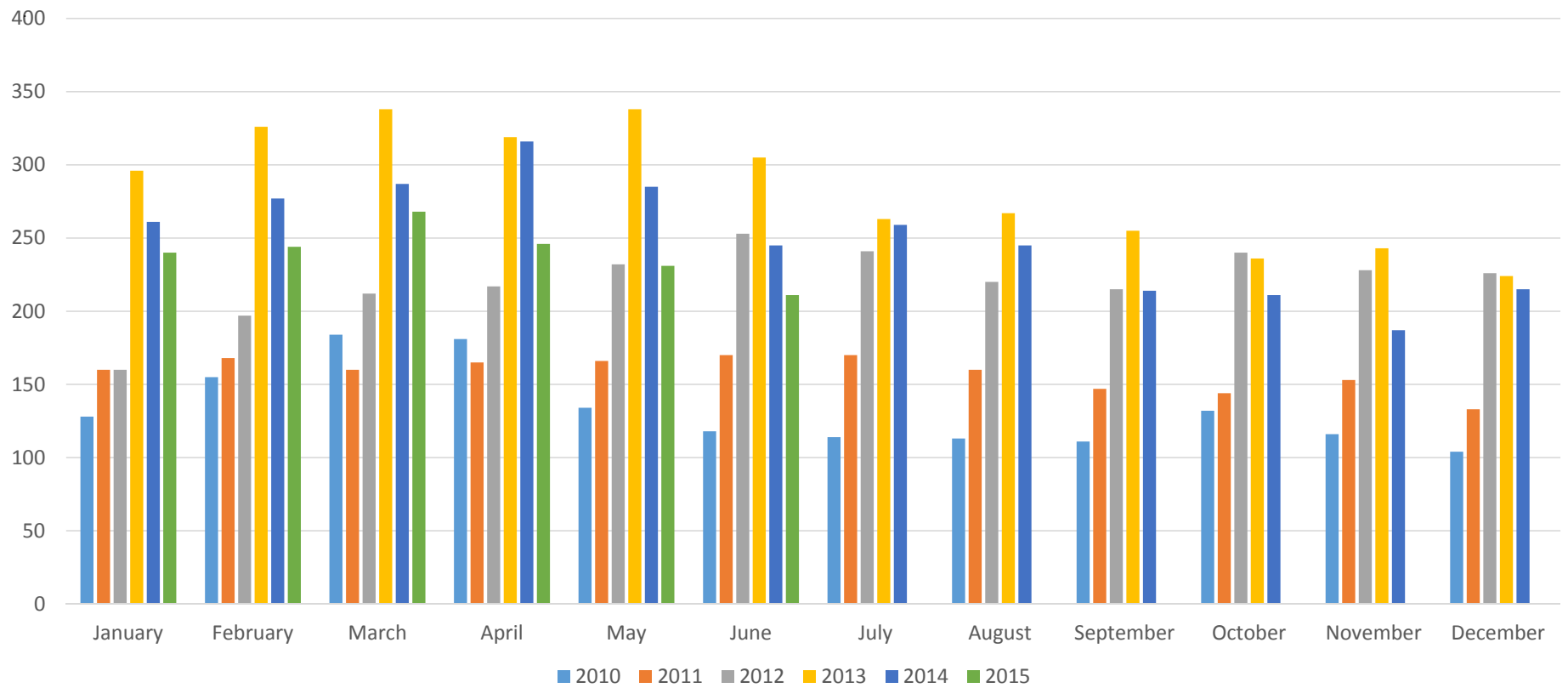
Current New Home Inventory  
vs.  
New Home Sales  
June 2015

	Active Listings	Under Contract	Sold-YTD
<\$150,000	0	2	23
\$150-200	49	17	82
\$200-250	83	44	97
\$250-300	103	39	95
\$300-350	65	28	73
\$350-400	79	27	58
\$400-450	44	23	39
\$450-500	34	8	20
\$500-700	67	19	43
\$700-1 Mil	18	3	14
> 1 Mil	8	1	4
<hr/>			
Total	550	211	548

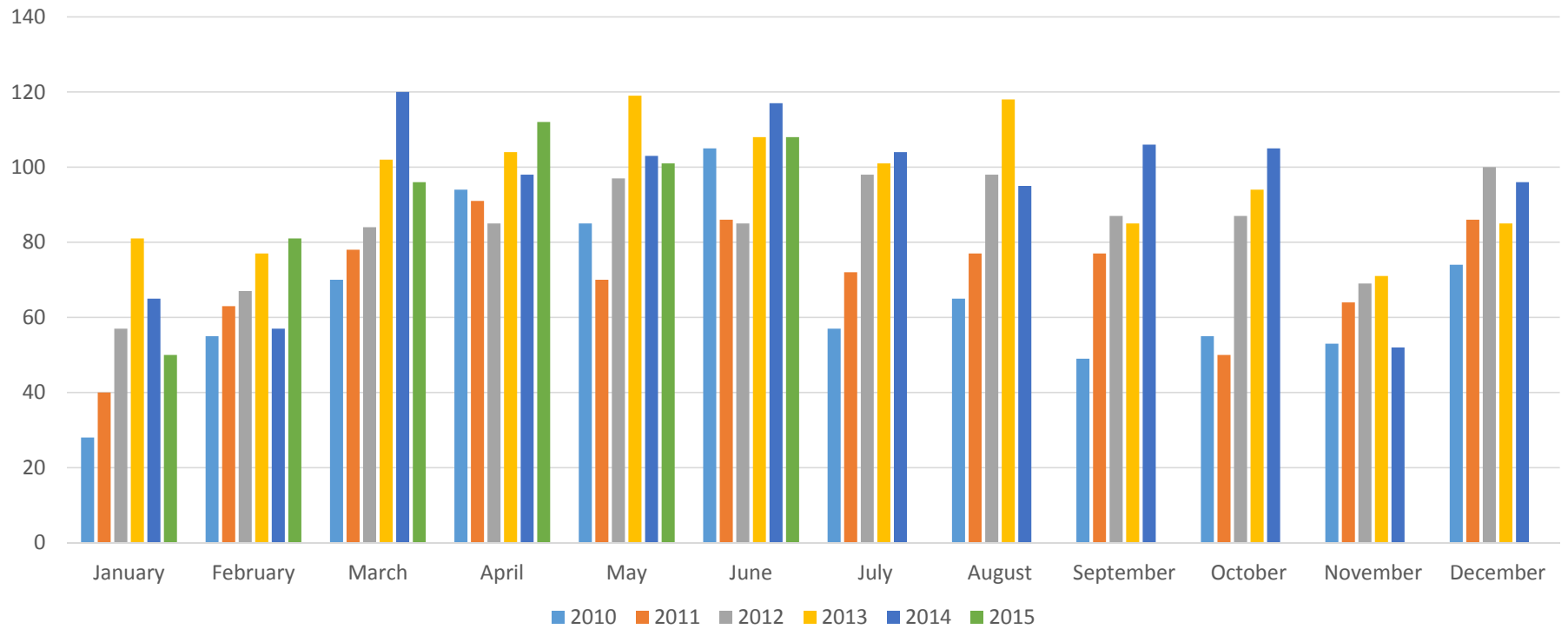
# New Homes Active



# New Homes Under Contract

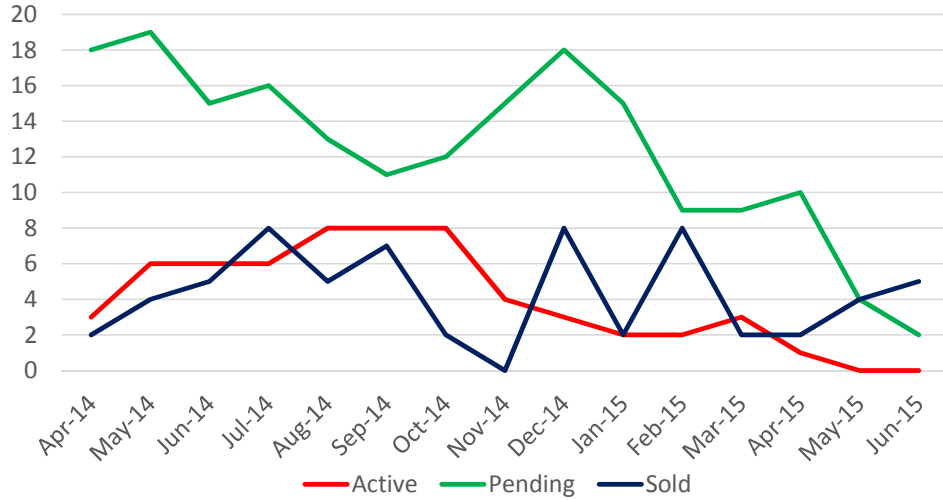


# New Homes Sold

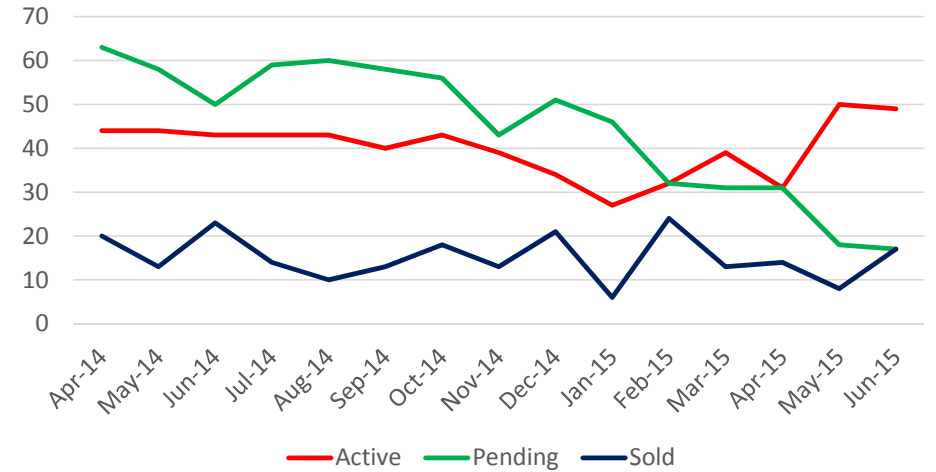




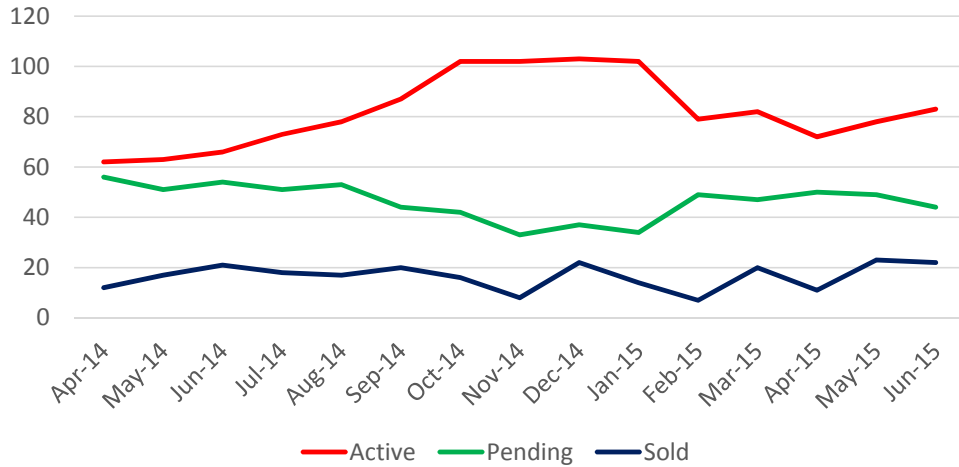
Under \$150,000



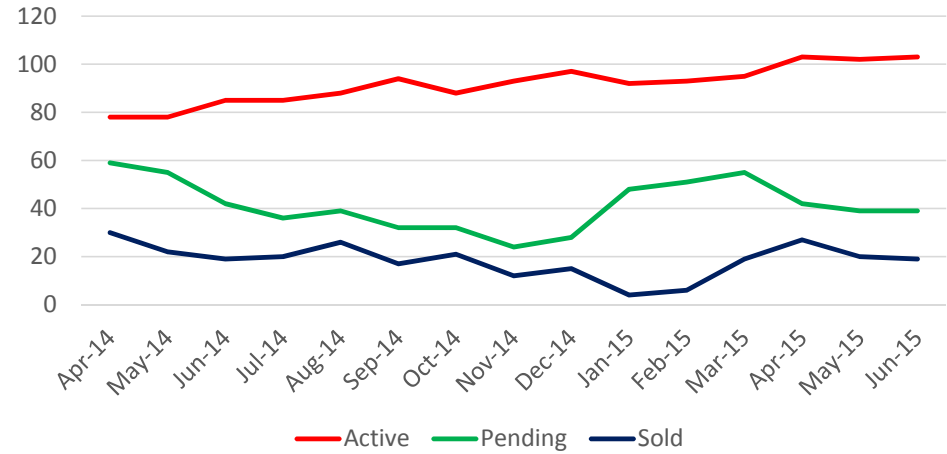
\$150,000-\$200,000



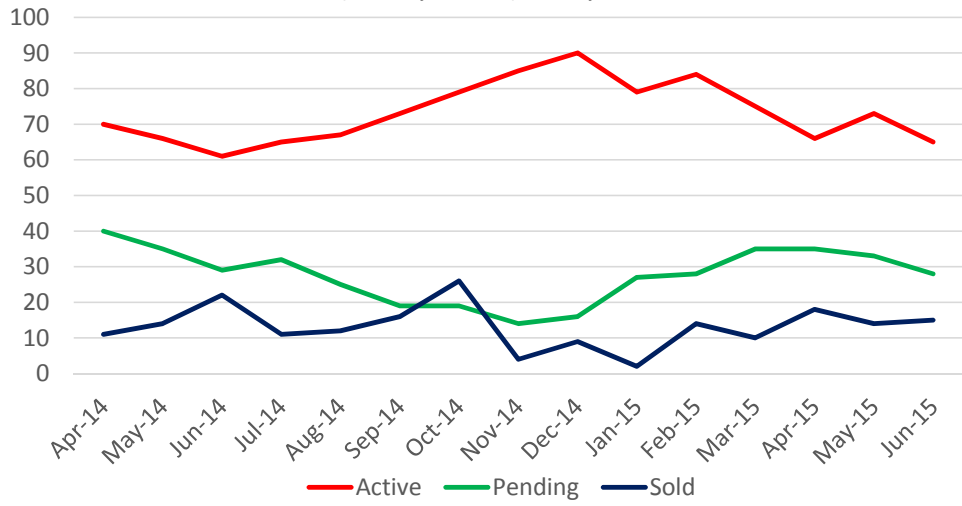
\$200,000-\$250,000



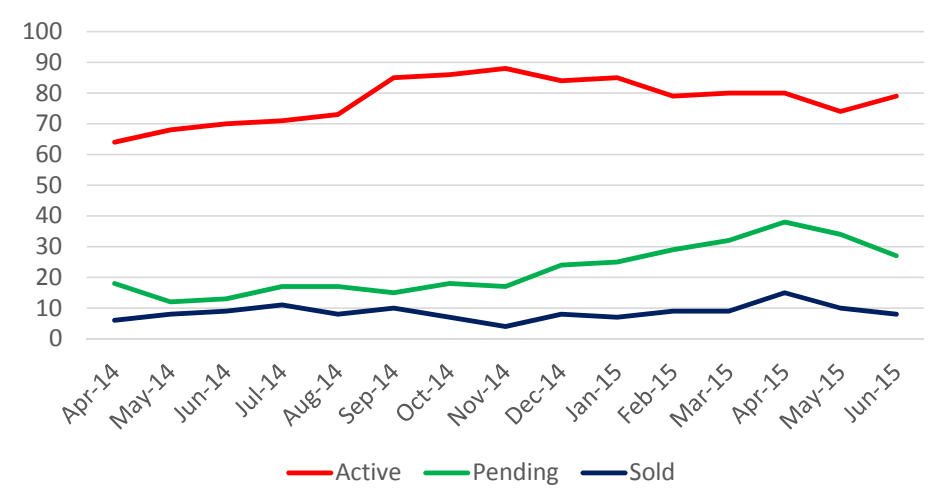
\$250,000-\$300,000



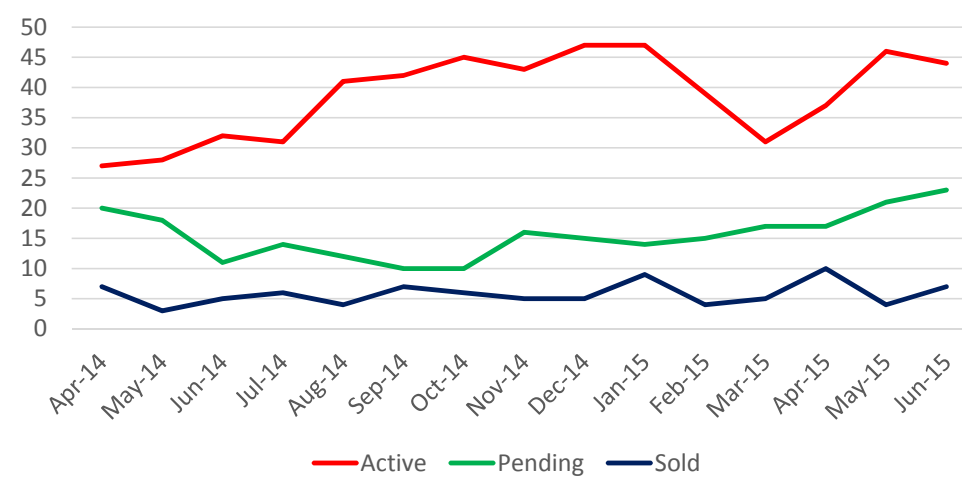
\$300,000-\$350,000



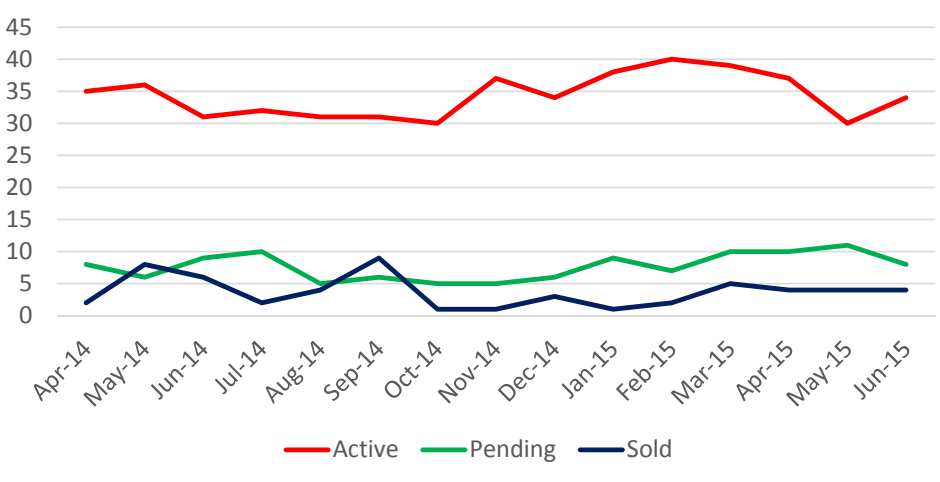
\$350,000-\$400,000



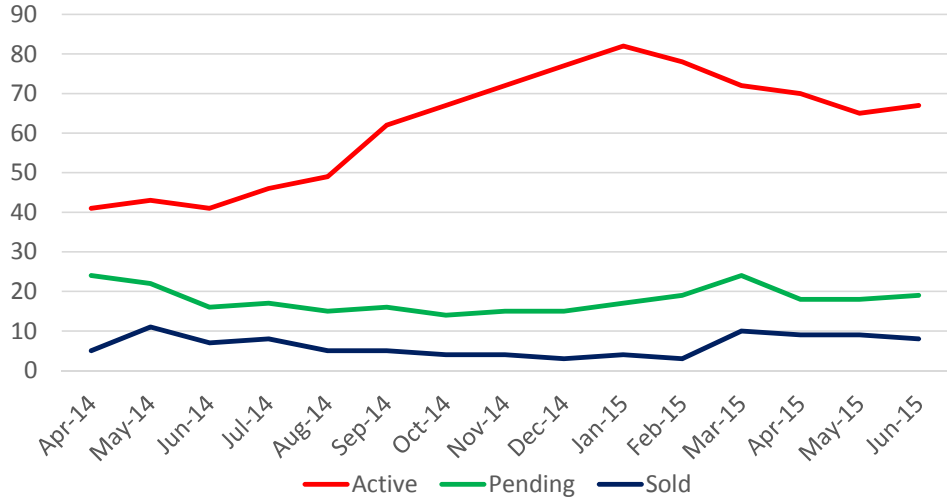
\$400,000-\$450,000



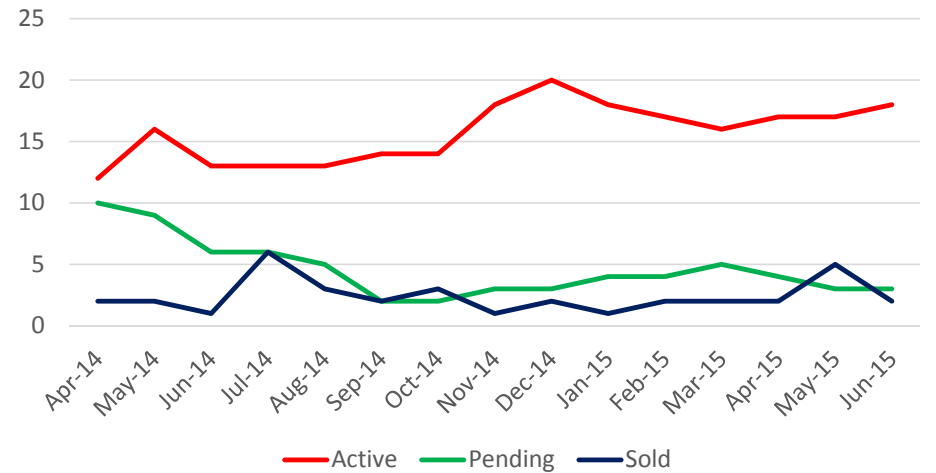
\$450,000-\$500,000



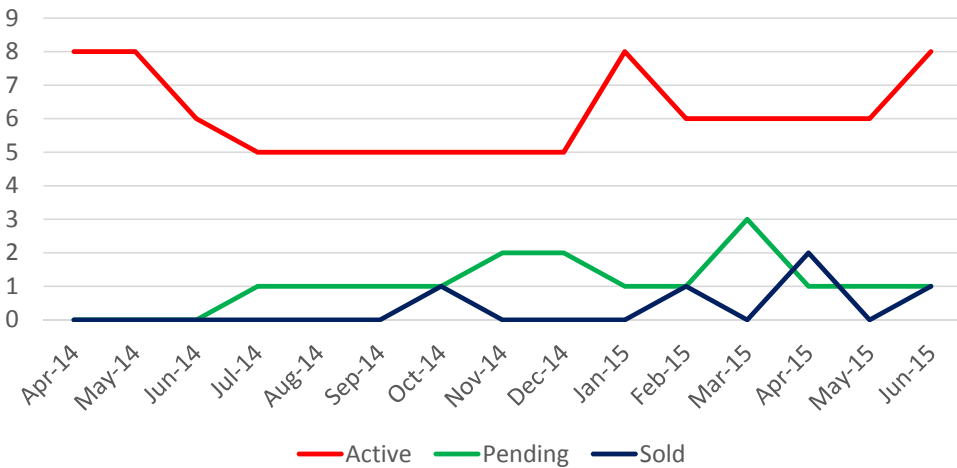
\$500,000-\$700,000



\$700,000-\$1,000,000



Over \$1,000,000



# Absorption Rate New Homes

in months

