



# Preston Report

Edmond Real Estate market  
February 2015

Prepared by

**Brian Preston**

RE/MAX Associates



Mobile: 405-826-5725 Office: 405-359-8700

[bpreston88@sbcglobal.net](mailto:bpreston88@sbcglobal.net)

[www.Edmond4Sale.com](http://www.Edmond4Sale.com)

Realtor of the Year 1995 & 2002  
Lifetime Achievement 2009  
Most Cooperative Realtor 1992  
RE/MAX Hall of Fame

# Edmond Real Estate

## 2015 Residential Homes

	Active	Pending	Sold
January	1165	638	207
February	1137	644	260
March			
April			
May			
June			
July			
August			
September			
October			
November			
December			
		Total	467

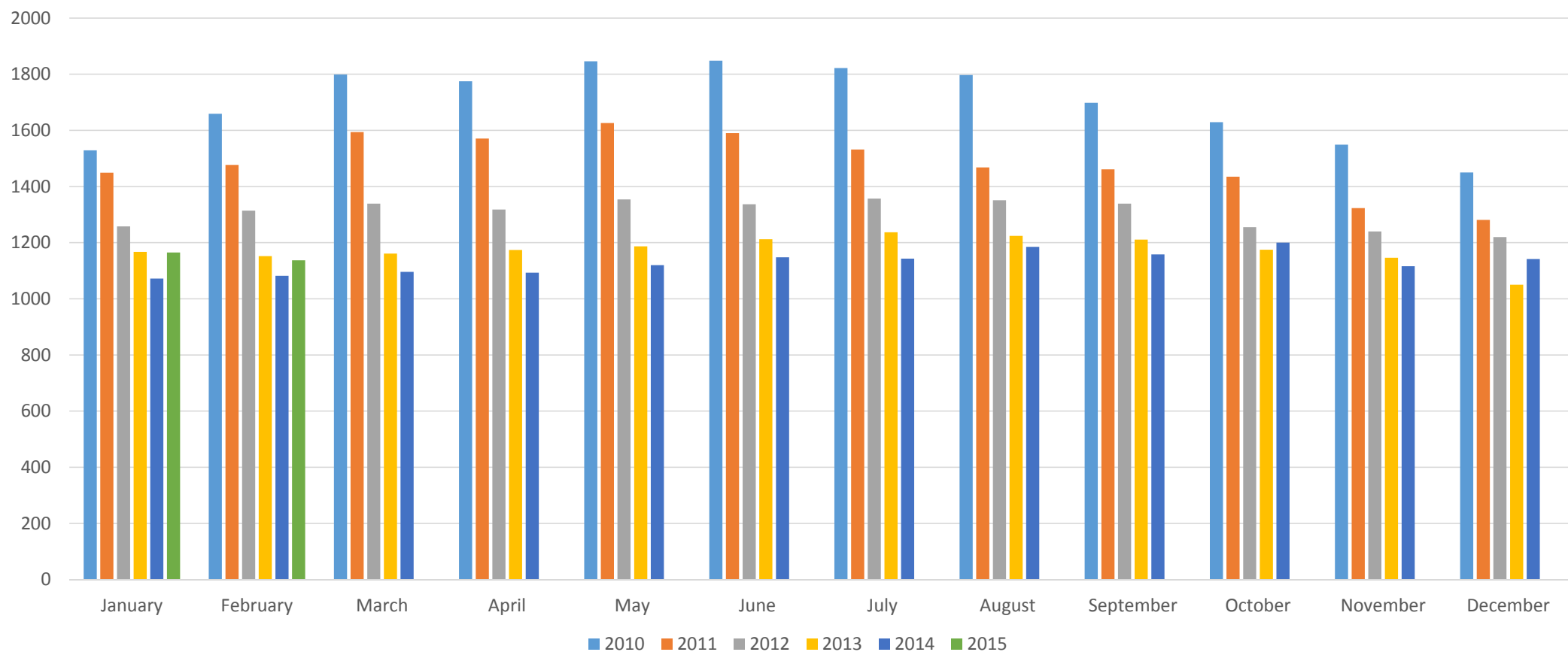
Preston Report

Based on information from MLSOK.com for the period (01/01/15) through (02/28/15) Edmond, Deer Creek and Oakdale School Districts, while information is deemed reliable it is not guaranteed

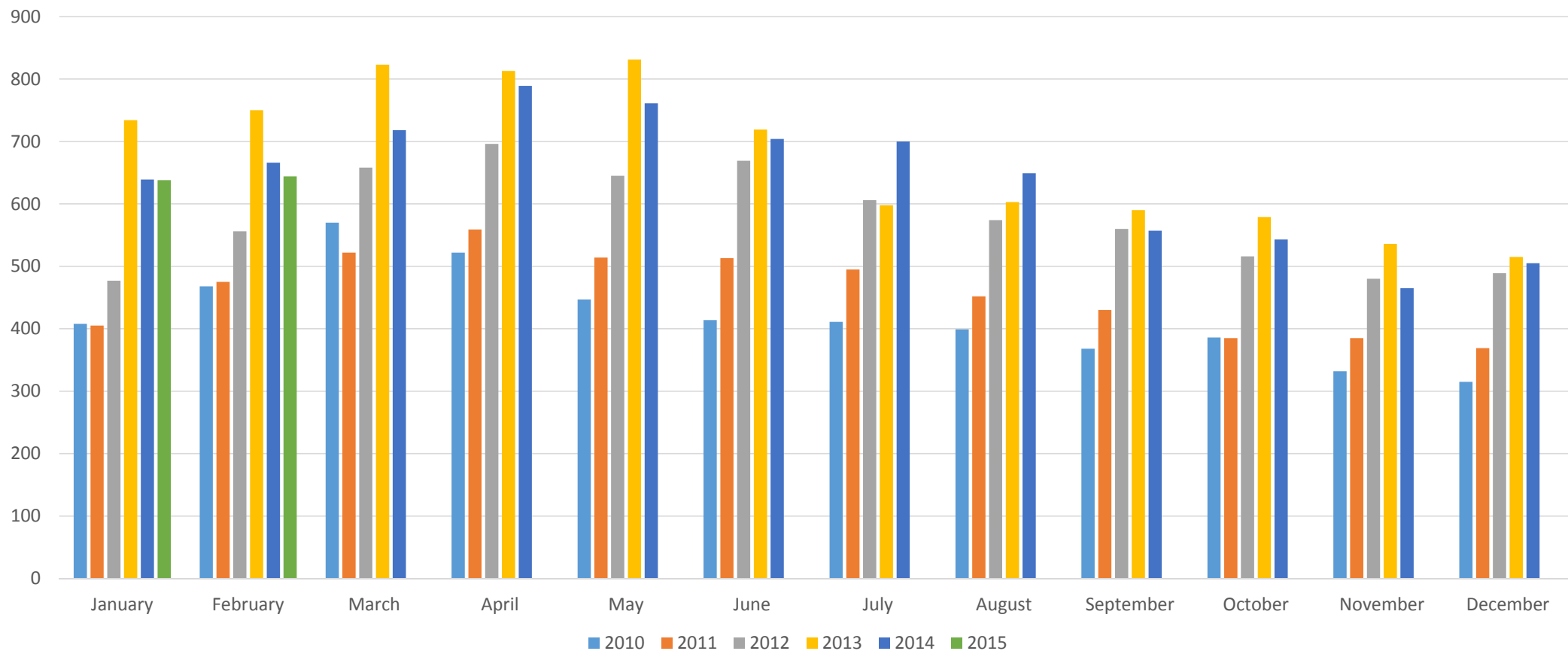
# Average Sales Price

	Average Price	Total Volume	Avg Price New Home	Total Volume New Homes
Jan.	\$290,318	\$60,095,826	\$331,162	\$16,558,100
Feb.	\$272,003	\$70,720,780	\$298,406	\$23,872,480
March				
April				
May				
June				
July				
August				
Sept.				
Oct.				
Nov.				
Dec.				
Total	\$280,121	\$130,816,606	\$311,004	\$40,430,580

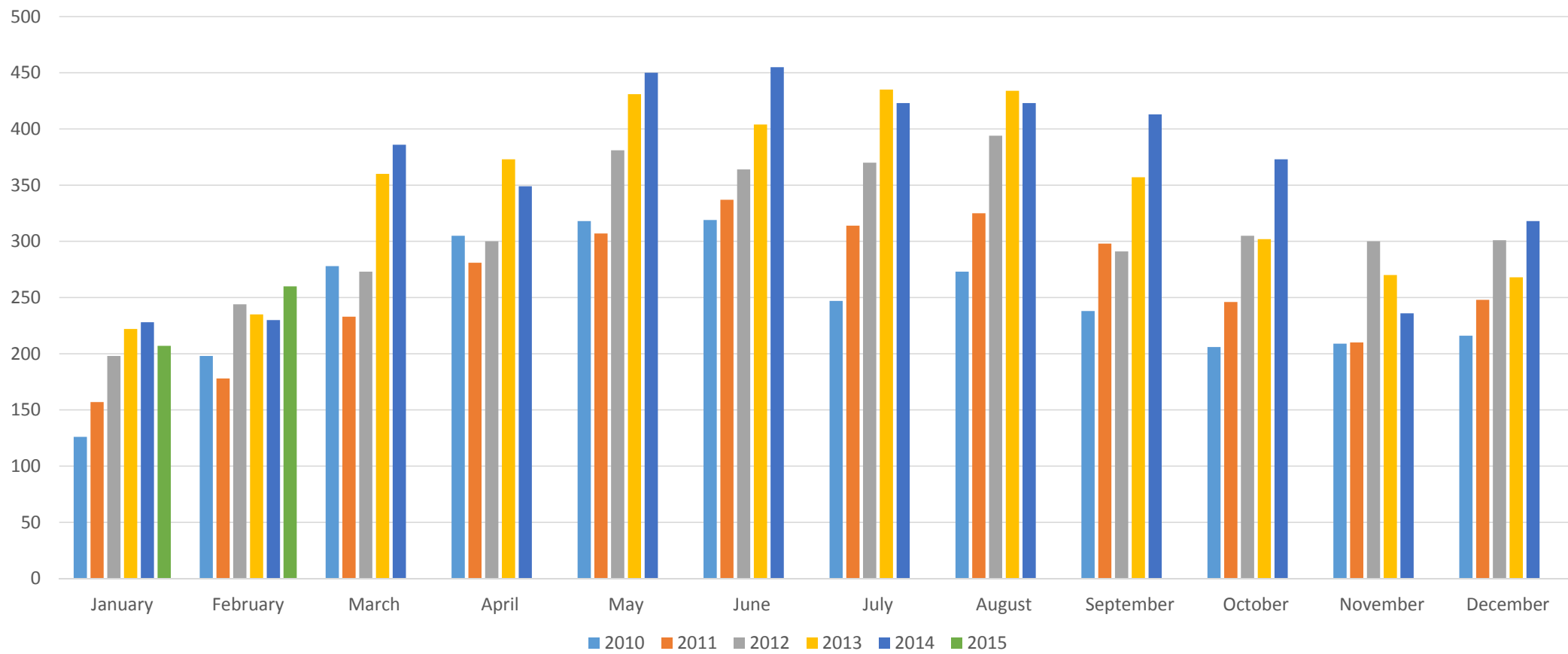
# Active Listings



# Under Contract



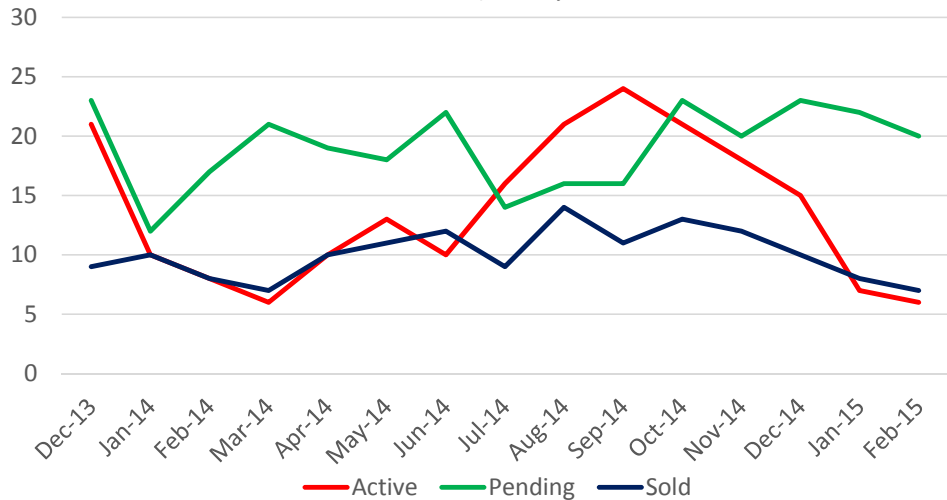
# Sold



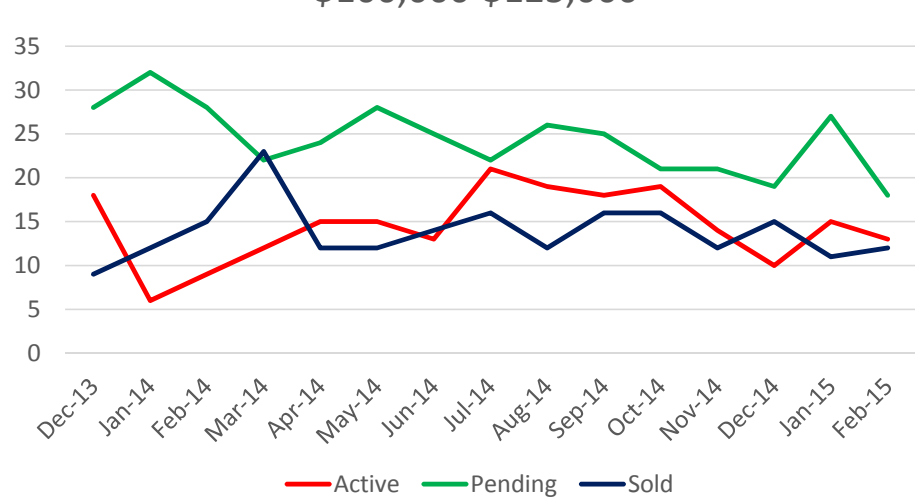
# Current Inventory vs. Homes Sold Edmond – February 2015

	Active	Pending	Sold YTD
<\$100,000	6	20	15
\$100-125k	13	18	23
\$125-150k	20	63	52
\$150-175k	45	56	52
\$175-200k	73	72	46
\$200-225k	80	55	42
\$225-250k	60	49	35
\$250-275k	77	42	25
\$275-300k	83	56	29
\$300-350k	138	70	36
\$350-400k	131	51	27
\$400-450K	68	32	32
\$450-500k	82	10	11
\$500-700k	144	38	27
\$700-1 mil	61	9	10
>\$1 million	56	3	5
<hr/>			
Total	1137	644	467

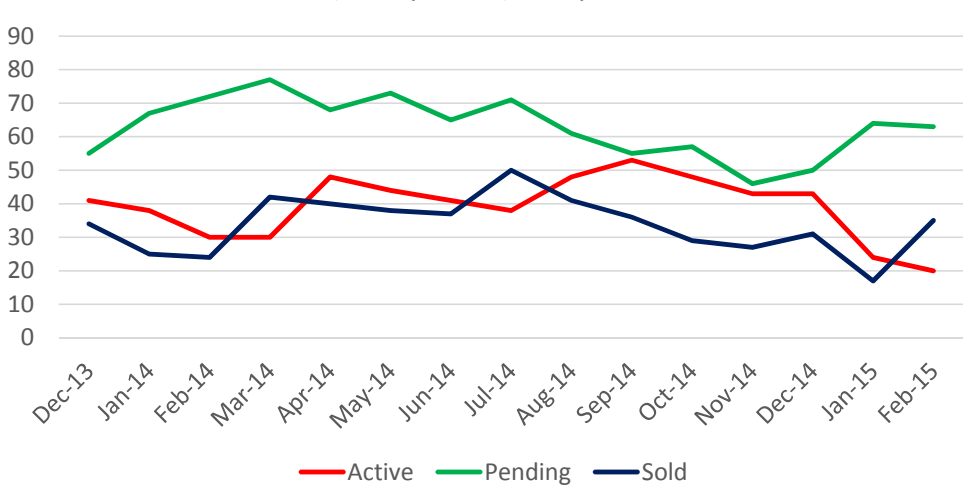
Under \$100,000



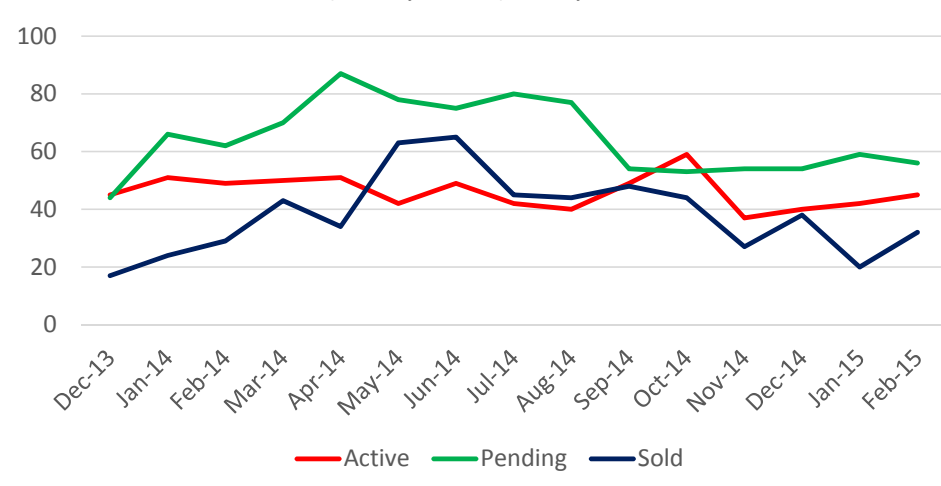
\$100,000-\$125,000



\$125,000-\$150,000

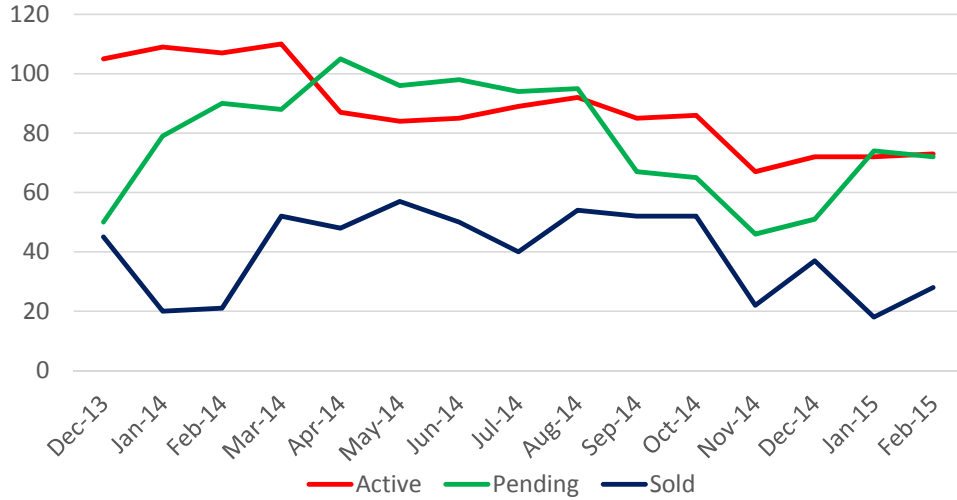


\$150,000-\$175,000

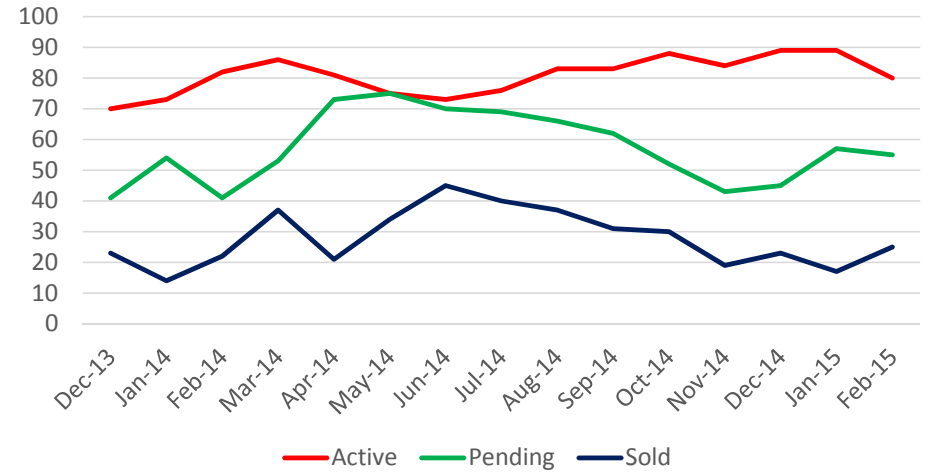




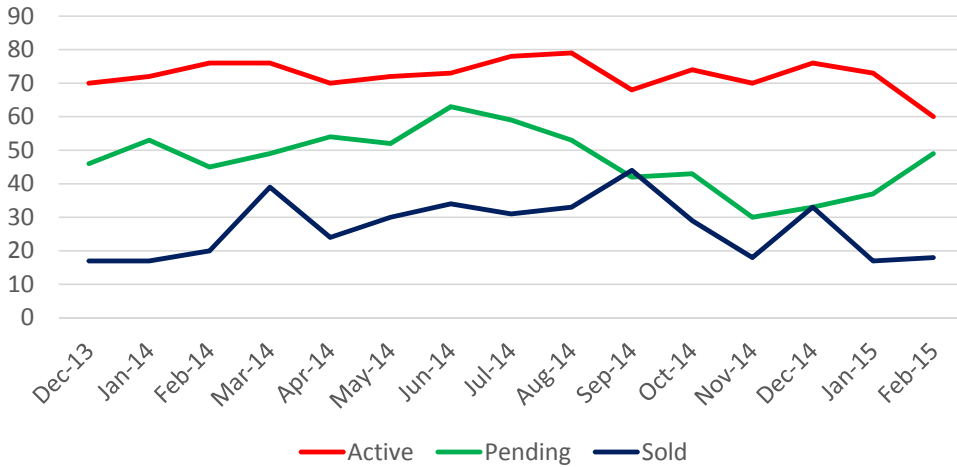
\$175,000-\$200,000



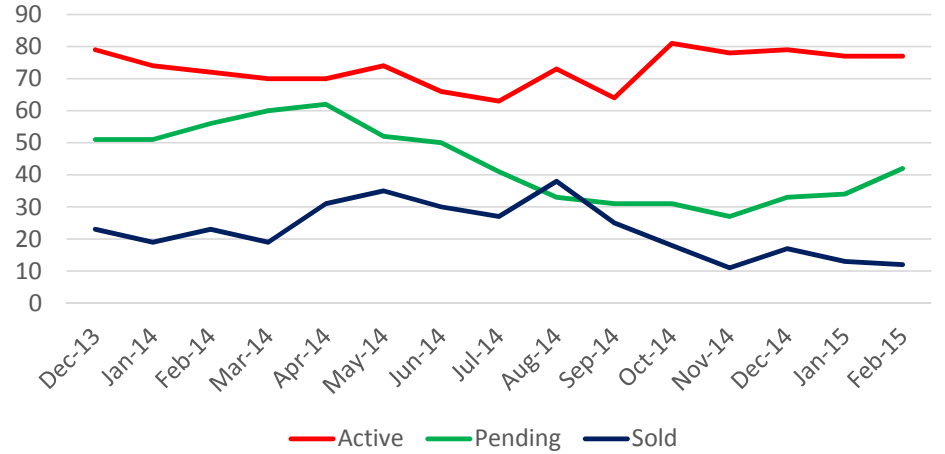
\$200,000-\$225,000



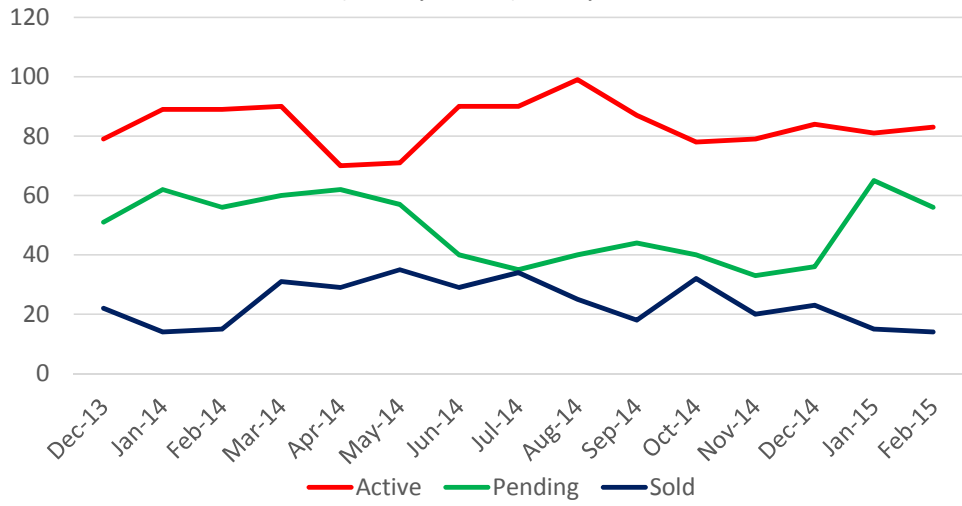
\$225,000-\$250,000



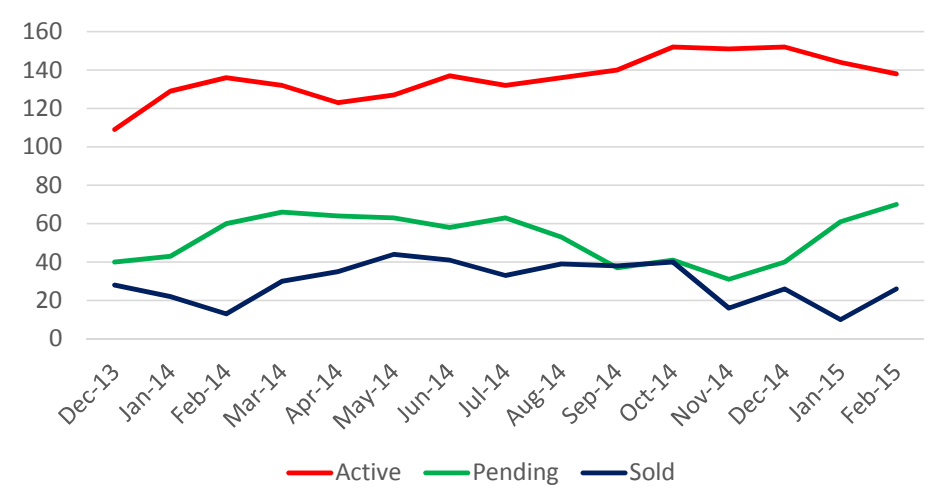
\$250,000-\$275,000



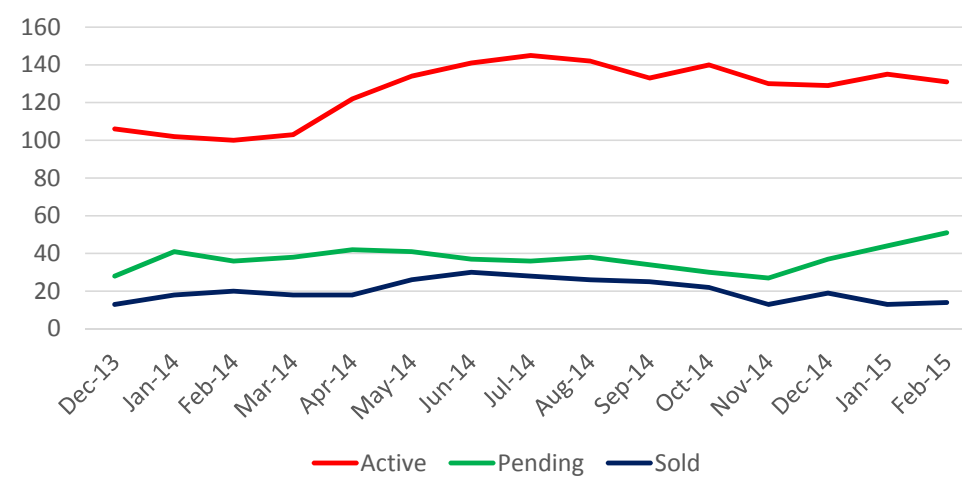
\$275,000-\$300,000



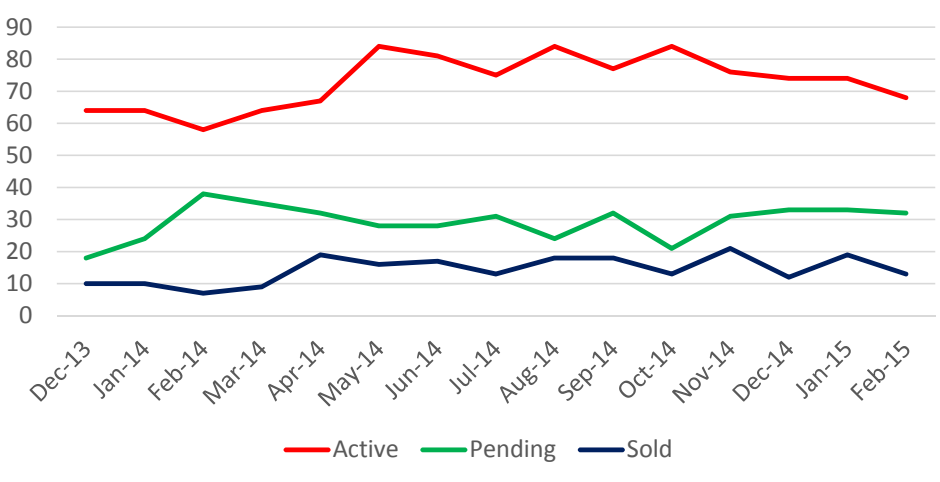
\$300,000-\$350,000



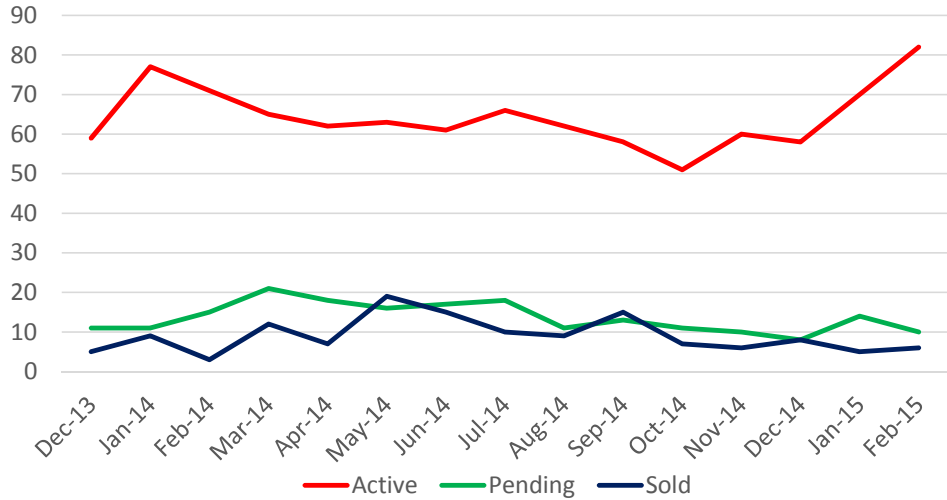
\$350,000-\$400,000



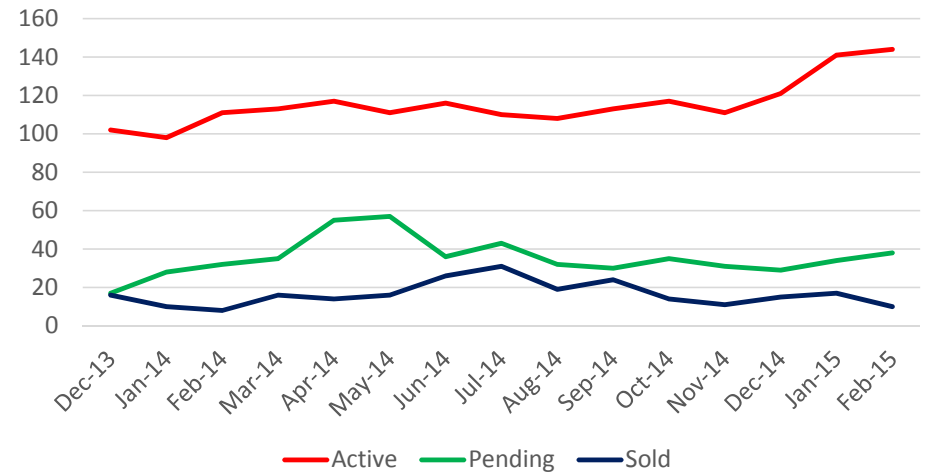
\$400,000-\$450,000



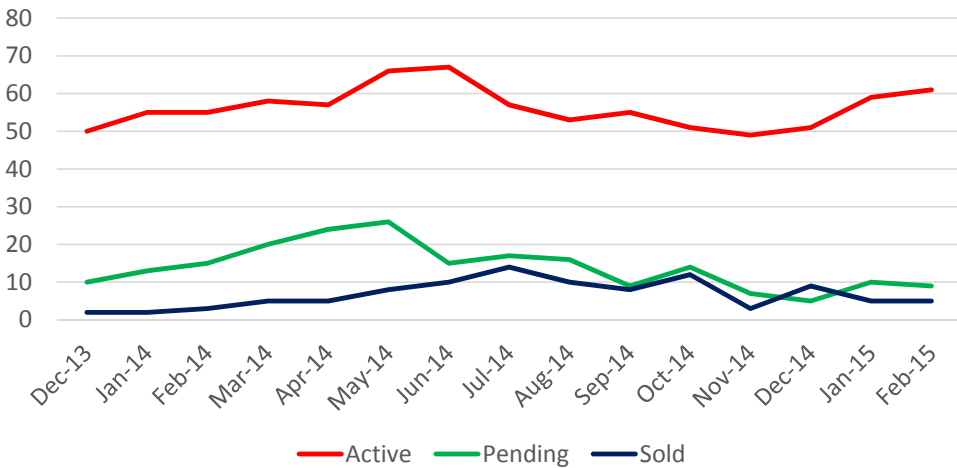
\$450,000-\$500,000



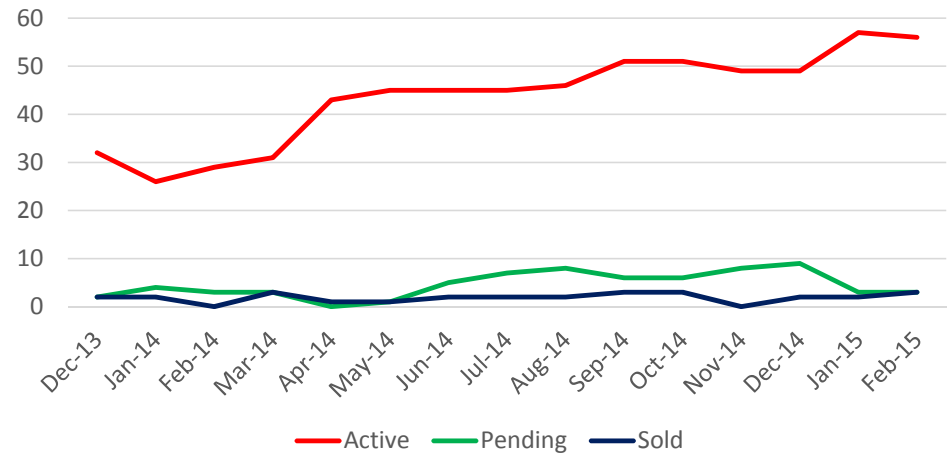
\$500,000-\$700,000



\$700,000-\$1,000,000

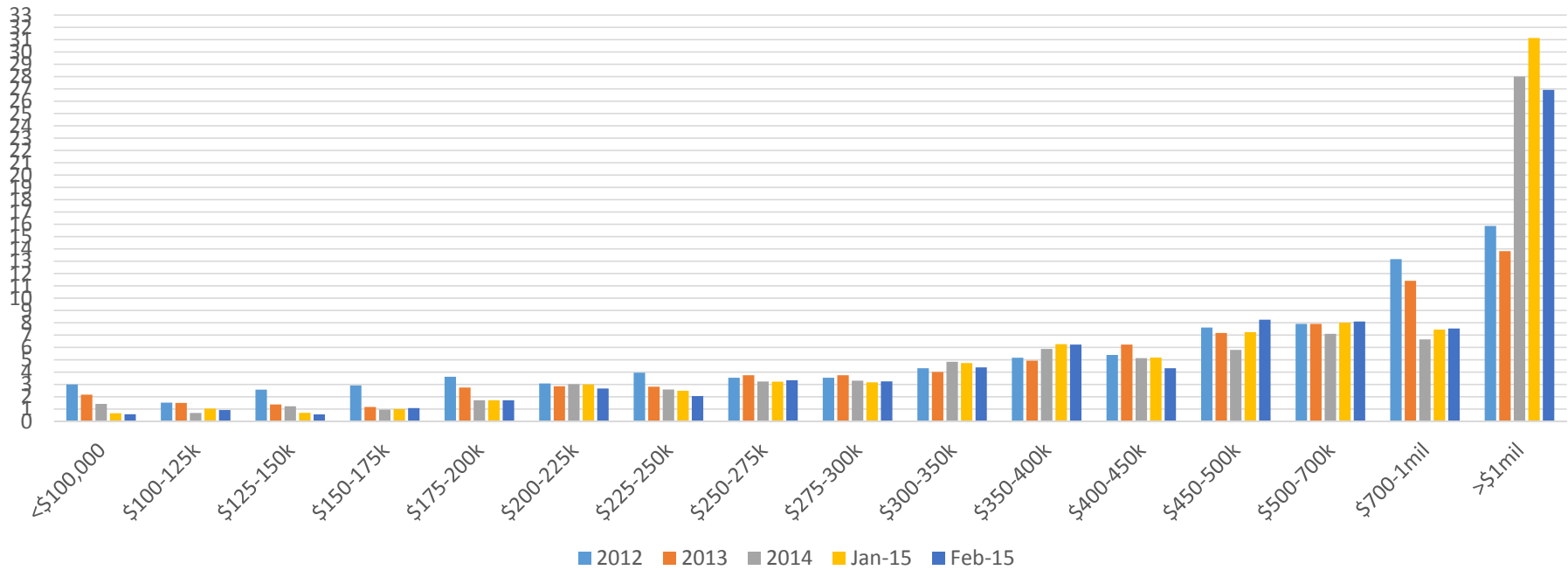


Over \$1,000,000



# Absorption Rates

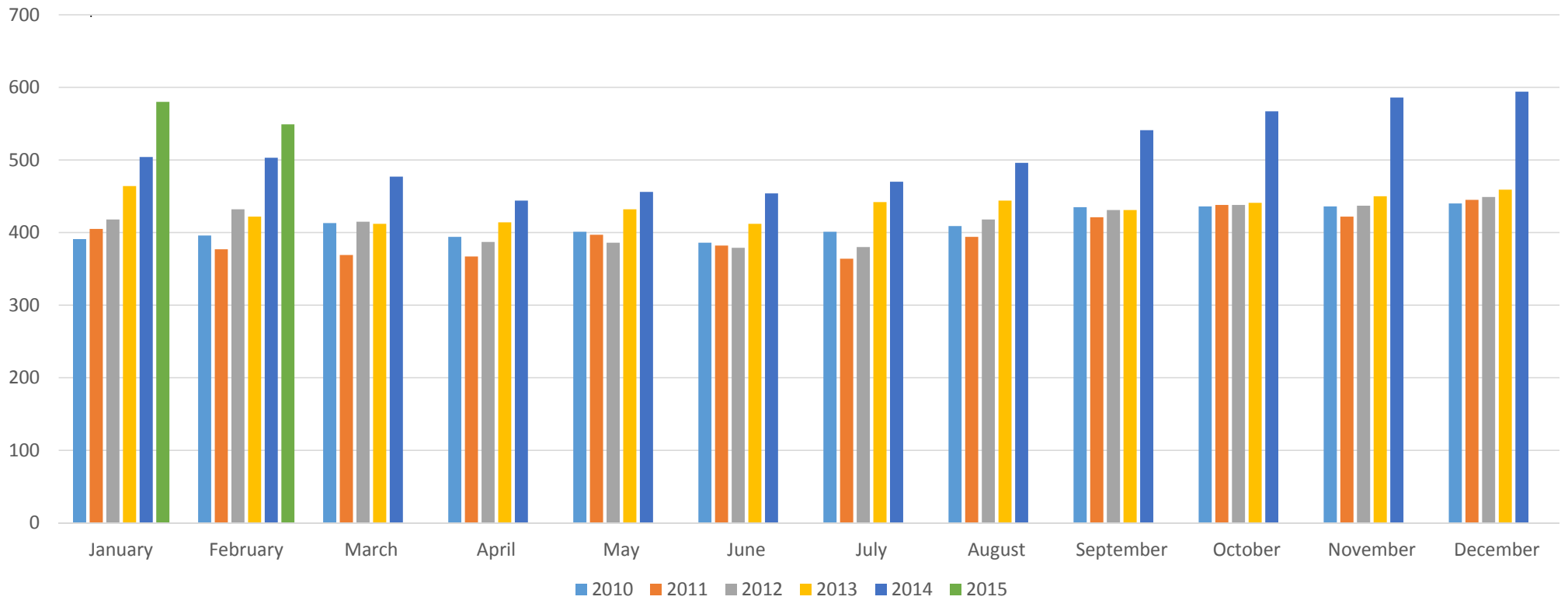
In Months



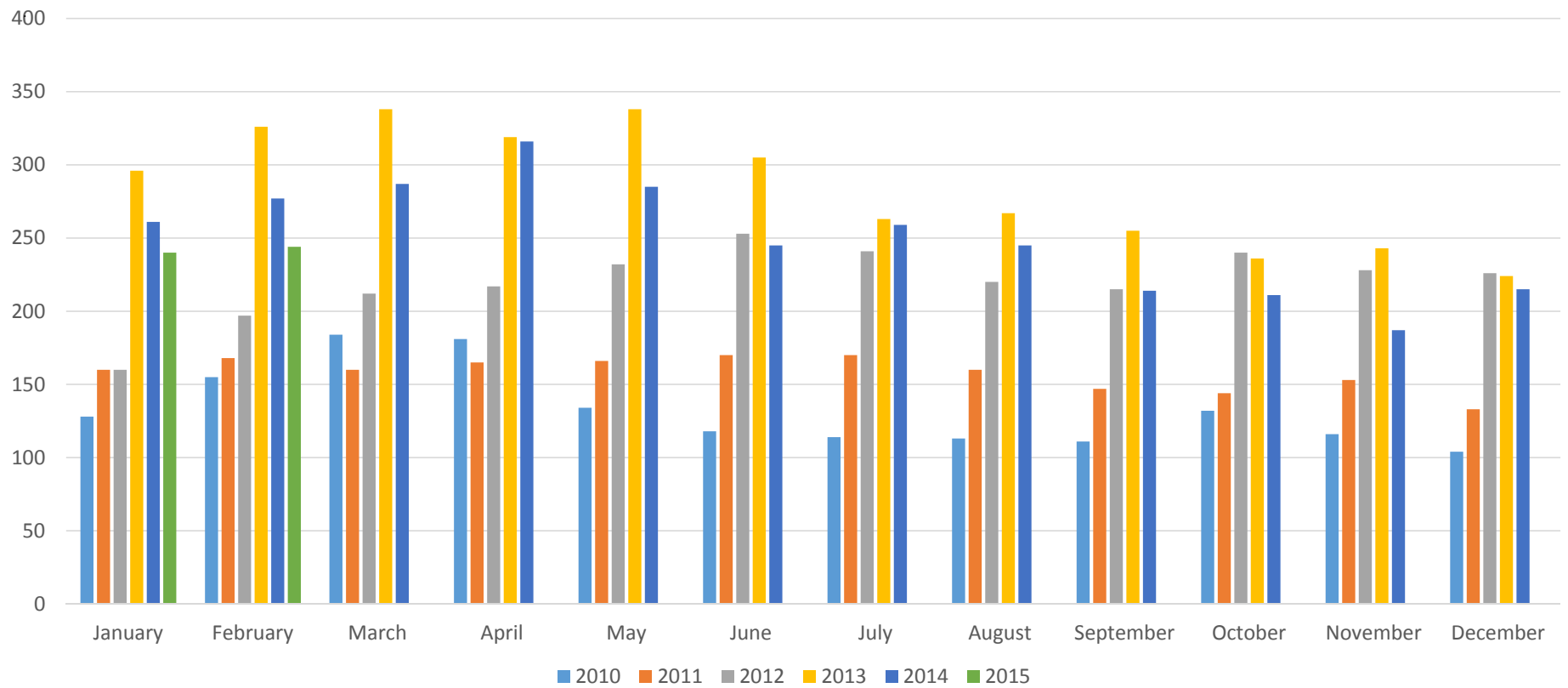
Current New Home Inventory  
vs.  
New Home Sales  
February 2015

	Active Listings	Under Contract	Sold-YTD
<\$150,000	2	9	10
\$150-200	32	32	30
\$200-250	79	49	21
\$250-300	93	51	10
\$300-350	84	28	16
\$350-400	79	29	16
\$400-450	39	15	13
\$450-500	40	7	3
\$500-700	78	19	7
\$700-1 Mil	17	4	3
> 1 Mil	6	1	1
<hr/>			
Total	580	244	130

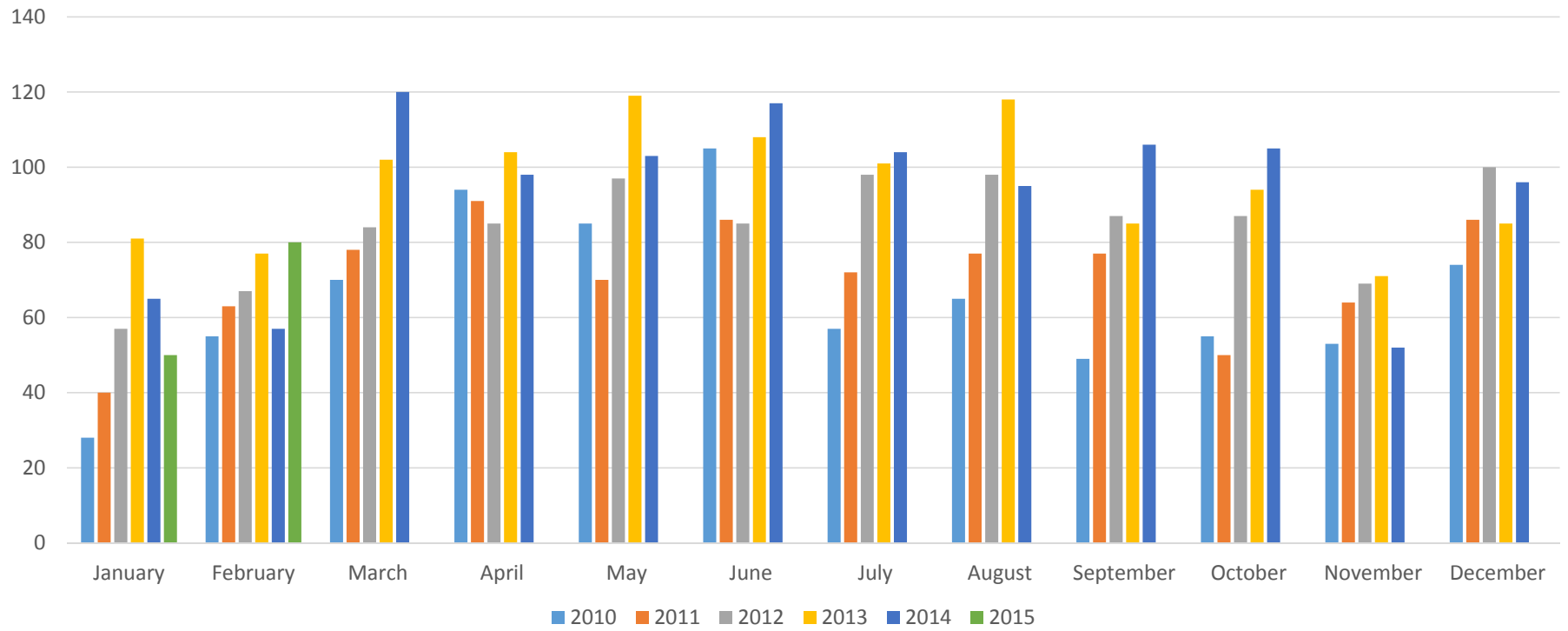
# New Homes Active



# New Homes Under Contract

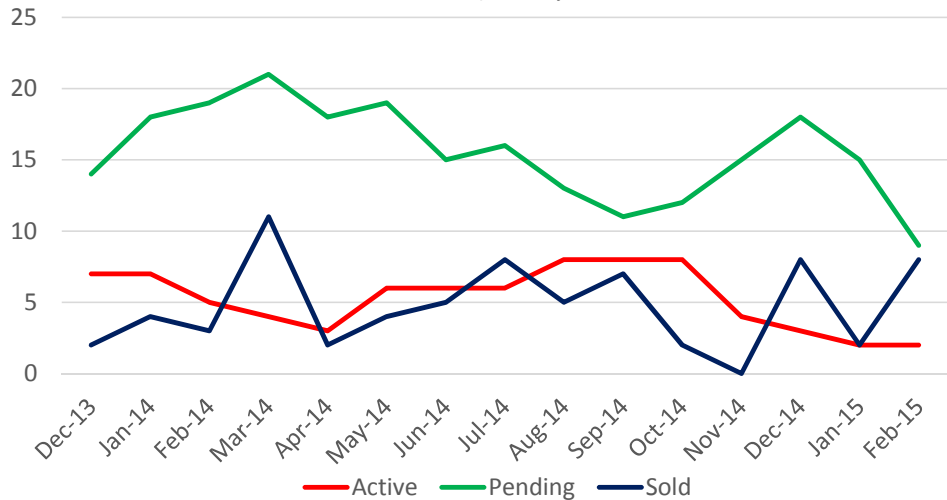


# New Homes Sold

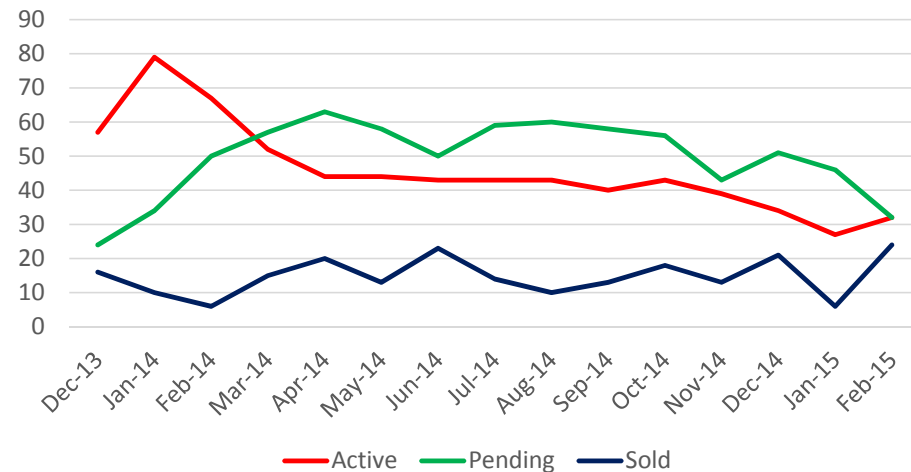




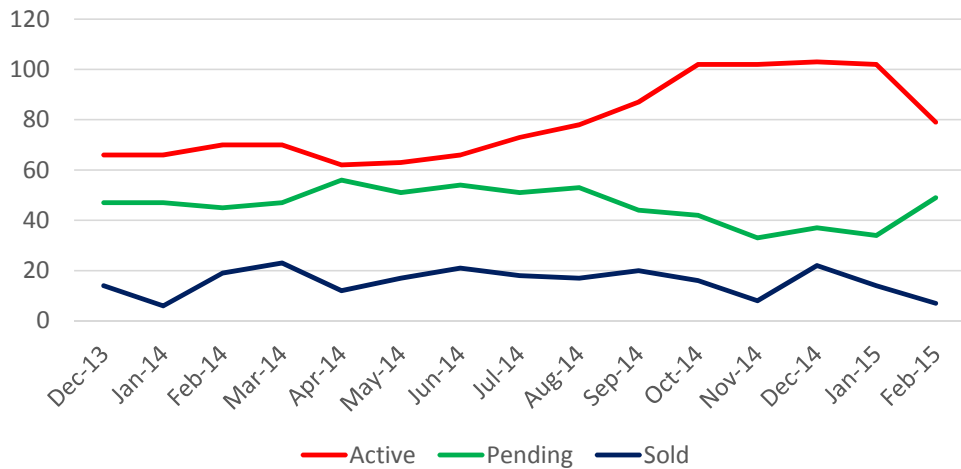
Under \$150,000



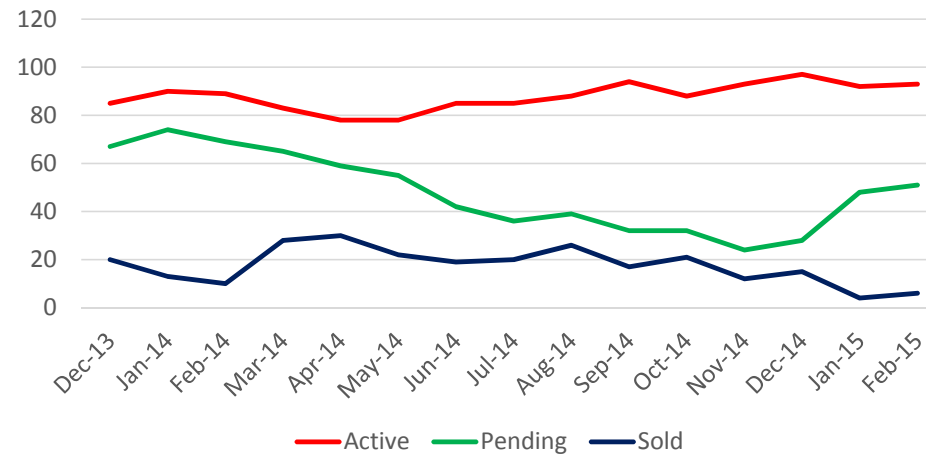
\$150,000-\$200,000



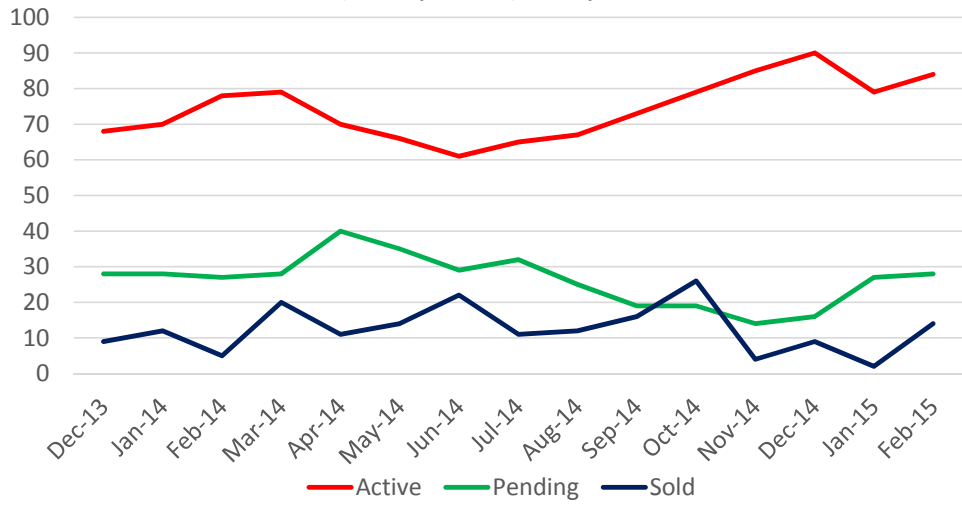
\$200,000-\$250,000



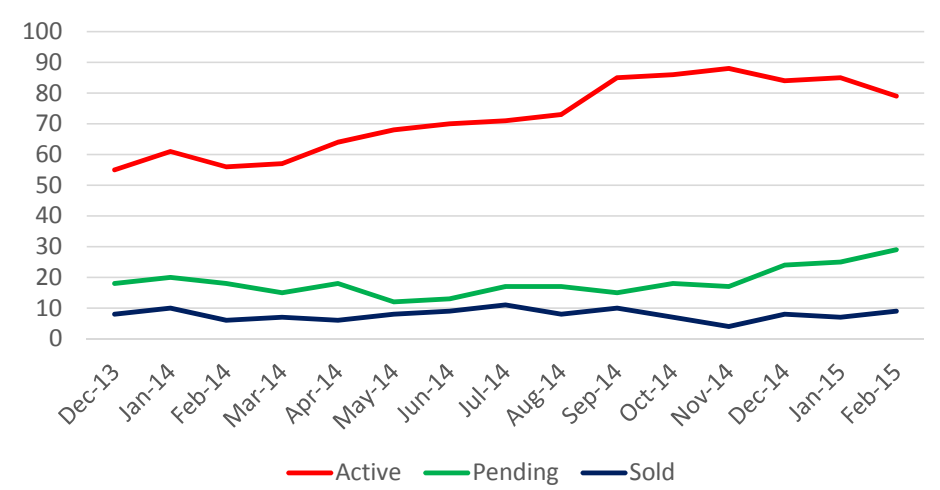
\$250,000-\$300,000



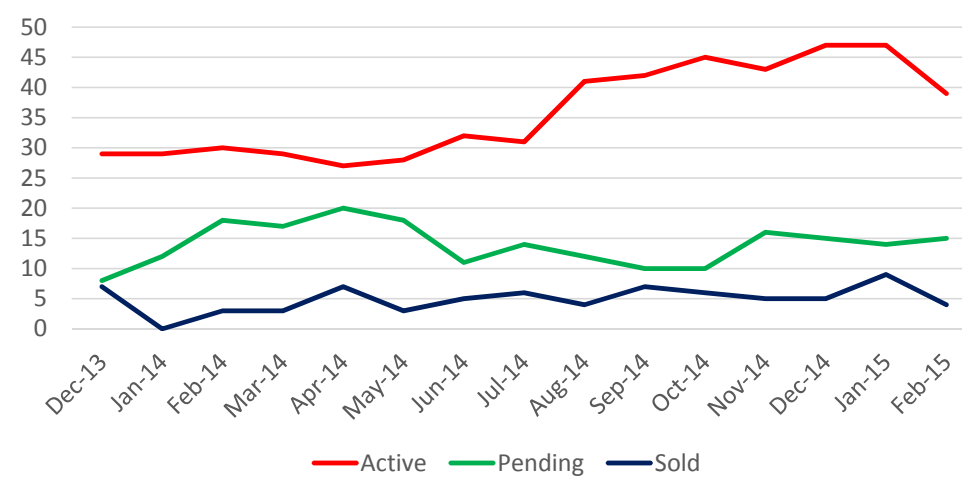
\$300,000-\$350,000



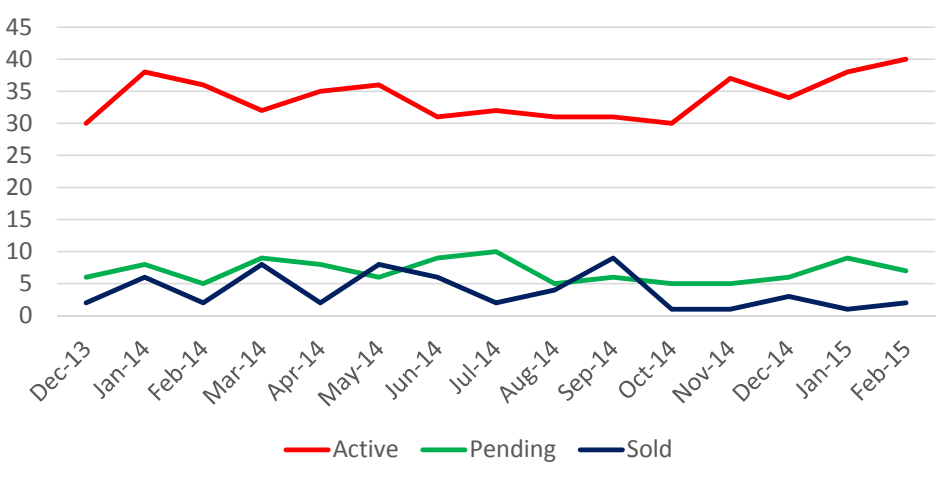
\$350,000-\$400,000



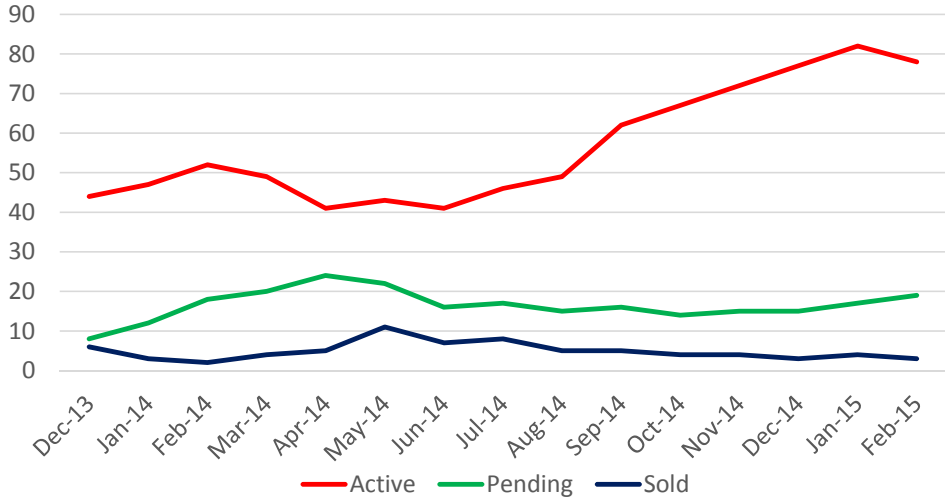
\$400,000-\$450,000



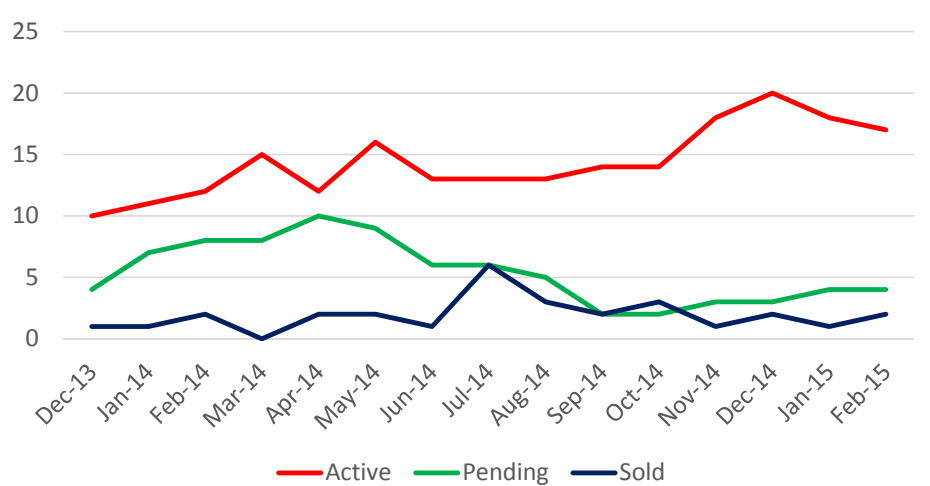
\$450,000-\$500,000



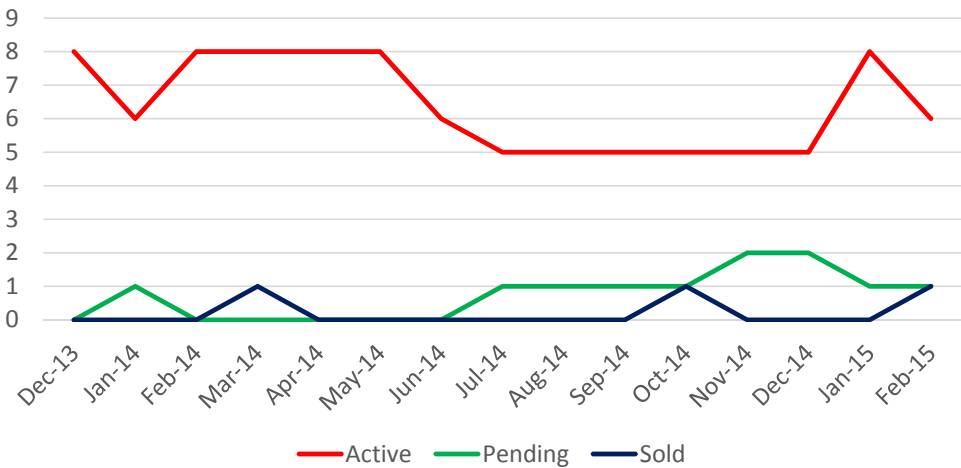
\$500,000-\$700,000



\$700,000-\$1,000,000



Over \$1,000,000



# Absorption Rate New Homes

in months

